

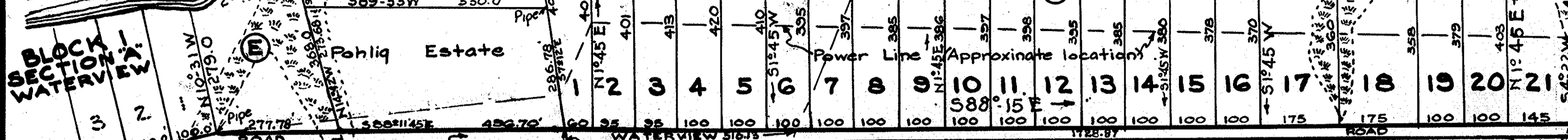
YORK

RIVER

Normal High Water Line

BLOCK I  
SECTION 'A'  
WATERVIEW

SECTION 'B' (1)  
WATERVIEW



Note:-

Iron pipe at corners front of lots and on lot line adjacent to top of bank at rear of lots.

Geo. P. Coleman

Turn around space to be used until Water-view Road is extended

old Marked Line

J. M. Lewis

Pohlig Estate

J. M. Lewis

Property Ditch Line

MAP SHOWING SUBDIVISION  
OF LAND ON THE SOUTH SIDE  
OF THE YORK RIVER AND EAST  
OF WORMLEYS CREEK.  
YORK COUNTY — VIRGINIA  
KNOWN AS BLOCK I SECTION 'B'  
PLAN OF WATERVIEW.

SCALE 1"=200'

JAN. 6, 1942

J. Temple Waddill  
Certified Civil Engineer  
Richmond, Va.

