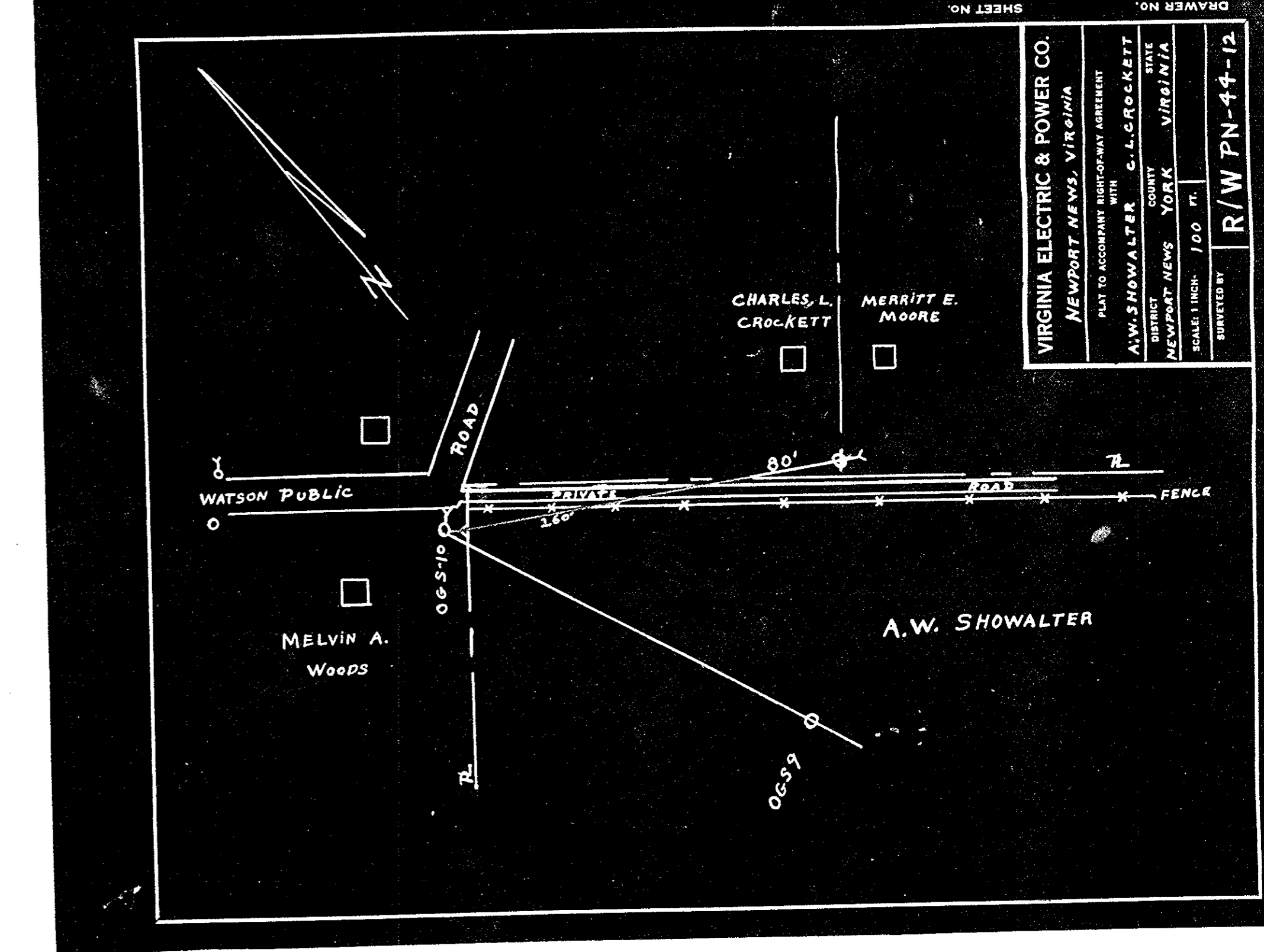


Note { Access Roads Marked X Are Not in Place  
But Can be Built.

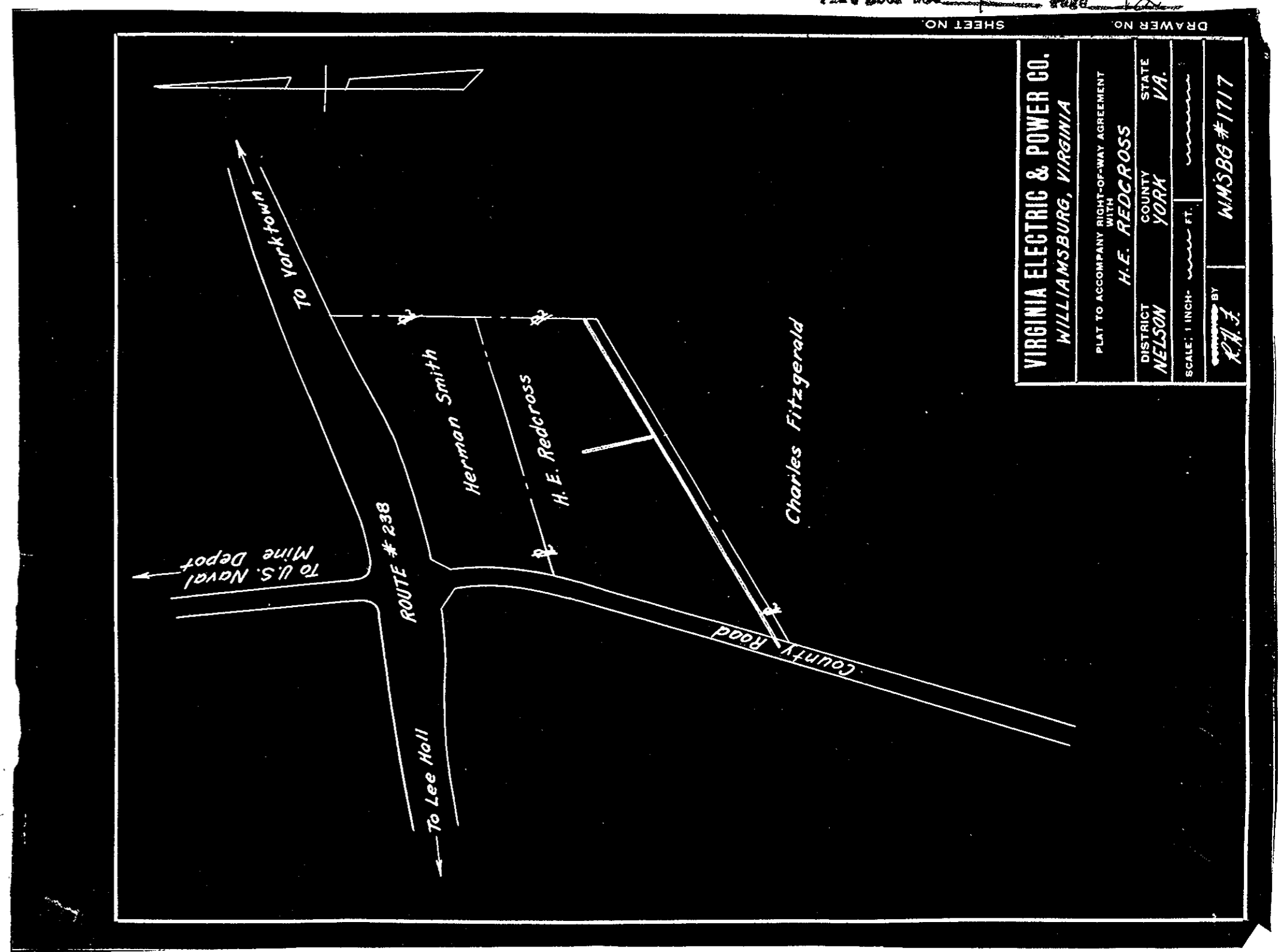
COLONIAL MONUMENT ESTATES.  
PLAT SHOWING RESIDUE OF PENNIMAN TRACT - SITUATED IN BRUTON DISTRICT YORK COUNTY VIRGINIA -  
NOVEMBER 20TH 1944 SCALE 1" = 400'

COMPILED, COORDINATED AND COMPUTED FROM THE RECORDS OF THE ORIGINAL PENNIMAN, BUREAU OF PUBLIC ROADS, CAMP PEARY EXCEPT AS NOTED ALL CORNERS MARKED WITH CONCRETE MONUMENTS.

VINCENT D. McMANUS SURVEYING & MAPPING WILLIAMSBURG VIRGINIA.



VIRGINIA ELECTRIC & POWER CO.  
NEWPORT NEWS, VIRGINIA  
PLAT TO ACCOMPANY RIGHT-OF-WAY AGREEMENT WITH A.W. SHOWALTER C.L. CROCKETT  
DISTRICT COUNTY STATE  
NEWPORT NEWS YORK VIRGINIA  
SCALE: 1 INCH = 100 FT.  
DRAWN BY R/W P N - 44 - 12



VIRGINIA ELECTRIC & POWER CO.  
WILLIAMSBURG, VIRGINIA  
PLAT TO ACCOMPANY RIGHT-OF-WAY AGREEMENT WITH H.E. REDCROSS  
DISTRICT COUNTY STATE  
NELSON YORK VA.  
SCALE: 1 INCH = 100 FT.  
DRAWN BY WMSBB # 1717