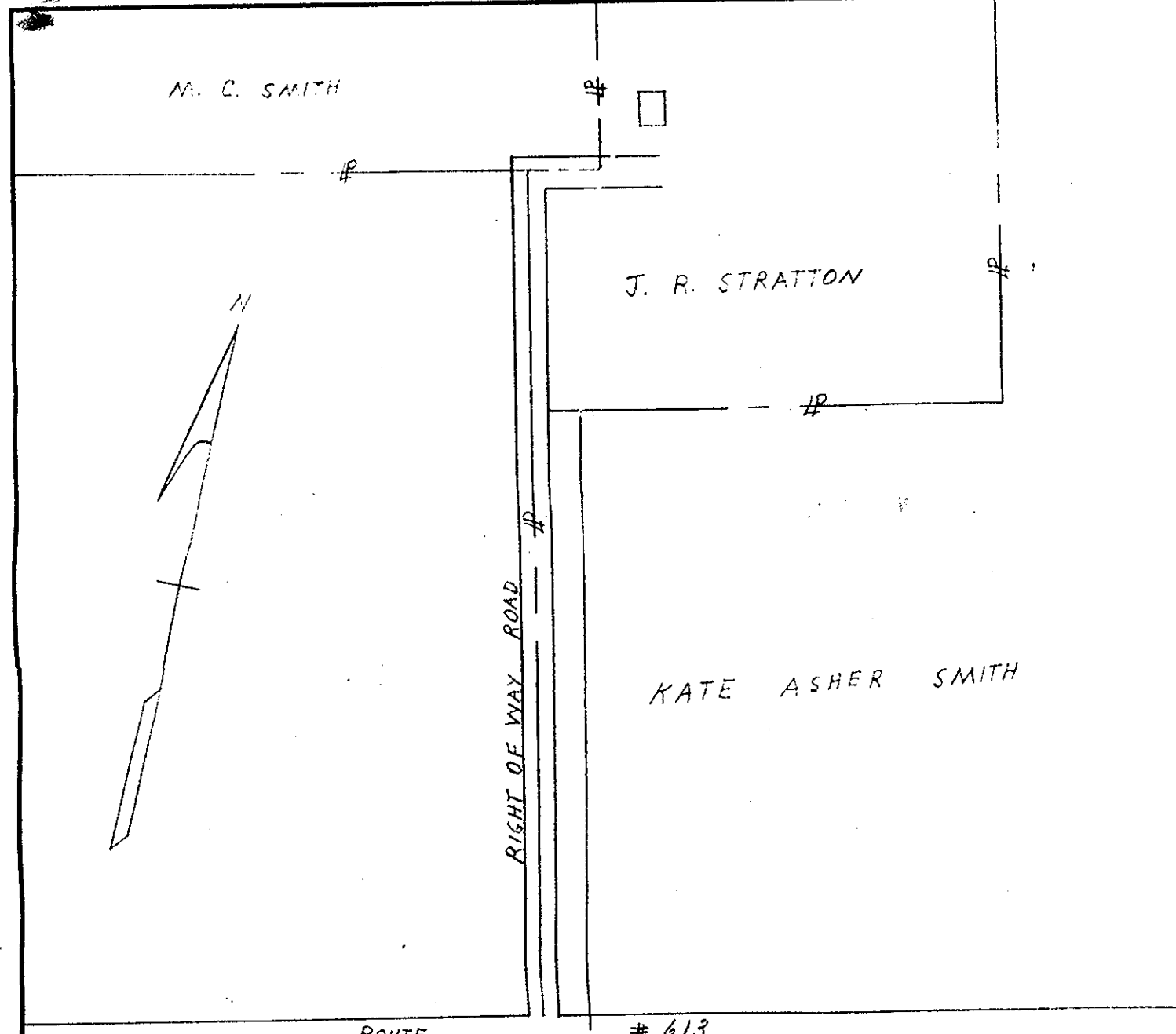


ROUTE # 613
 ← TABBS POST OFFICE 0.2 ± MI. TO POQUOSON →

VEPCO. FORM NO. 15 VIRGINIA ELECTRIC AND POWER COMPANY PLAT TO ACCOMPANY RIGHT-OF-WAY AGREEMENT		
PENINSULA	DISTRICT	
DISTRICT	COUNTY	STATE
Poquoson	York County,	Va.
Newport News OFFICE	No. R/W 23	
1945		

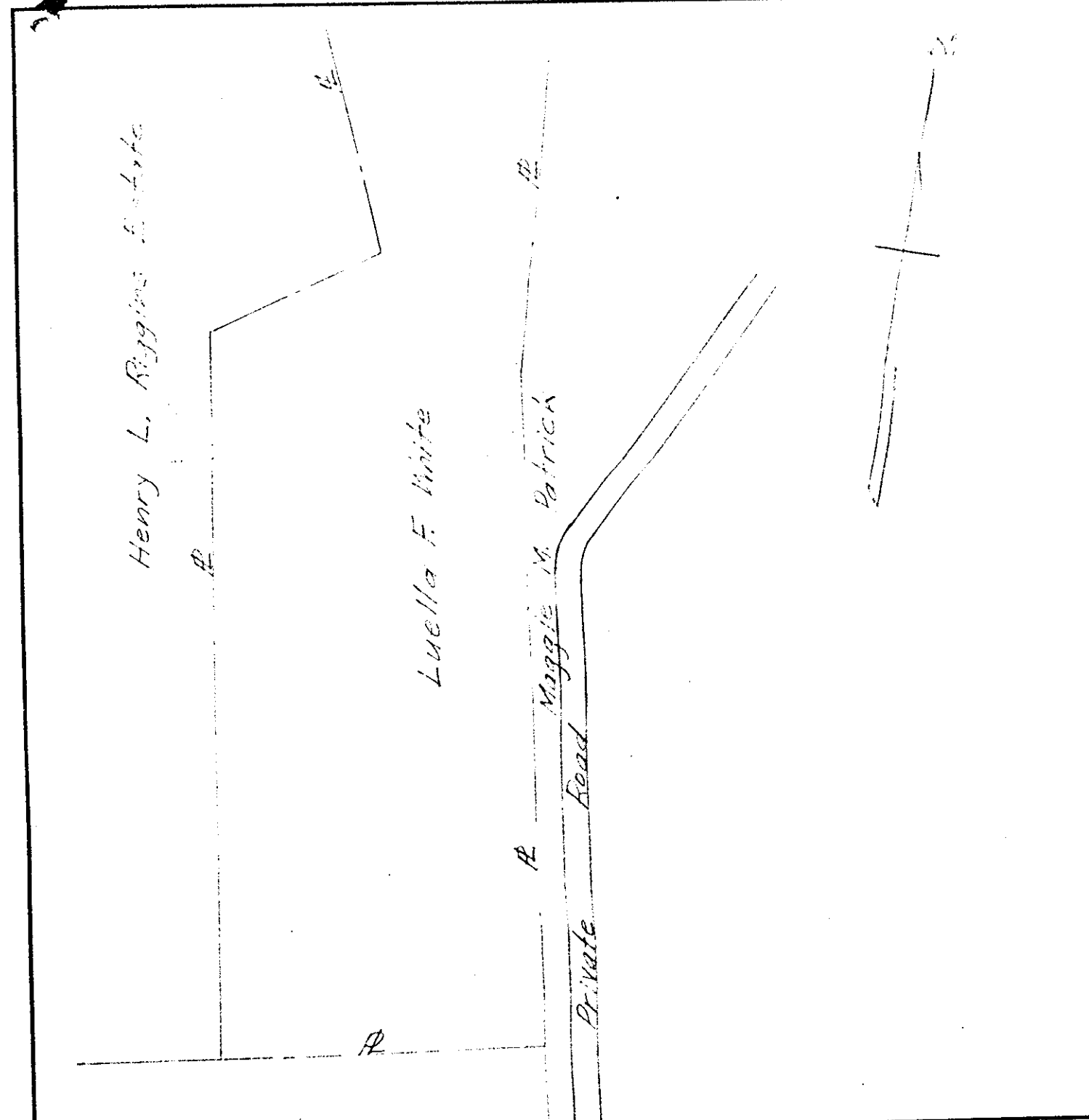
"ALBANY" NO. 1951 K&E CO., N.Y.
 REG. U.S. PAT. OFF.



ROUTE # 613
 ← TABBS POST OFFICE 0.2 ± MI. TO POQUOSON →

VEPCO. FORM NO. 15 VIRGINIA ELECTRIC AND POWER COMPANY PLAT TO ACCOMPANY RIGHT-OF-WAY AGREEMENT		
PENINSULA	DISTRICT	
DISTRICT	COUNTY	STATE
Poquoson	York County,	Va.
Newport News OFFICE	No. R/W 23	
1945		

"ALBANY" NO. 1951 K&E CO., N.Y.
 REG. U.S. PAT. OFF.



To Moores P.O. Route #171 To Poquoson 1.0 ± MI.

VEPCO. FORM NO. 15 VIRGINIA ELECTRIC AND POWER COMPANY PLAT TO ACCOMPANY RIGHT-OF-WAY AGREEMENT		
Peninsula	DISTRICT	
DISTRICT	COUNTY	STATE
Poquoson	York	Va.
Newport News OFFICE	No. R/W-17	
1945		

"ALBANY" NO. 1951 K&E CO., N.Y.
 REG. U.S. PAT. OFF.