

Oyster Books 2 at page 277



ACCEPTED BY _____

AMERICAN CEMENT ENGINEERING
315 FIFTH AVE. NEW YORK, N.Y.

FOR
THE INVESTMENT CORPORATION REAL ESTATE

SECTION: GENERAL
DETAIL: COPLAND SHIELDS & COMPANY

SCALE: 200 FT. = 1 IN.

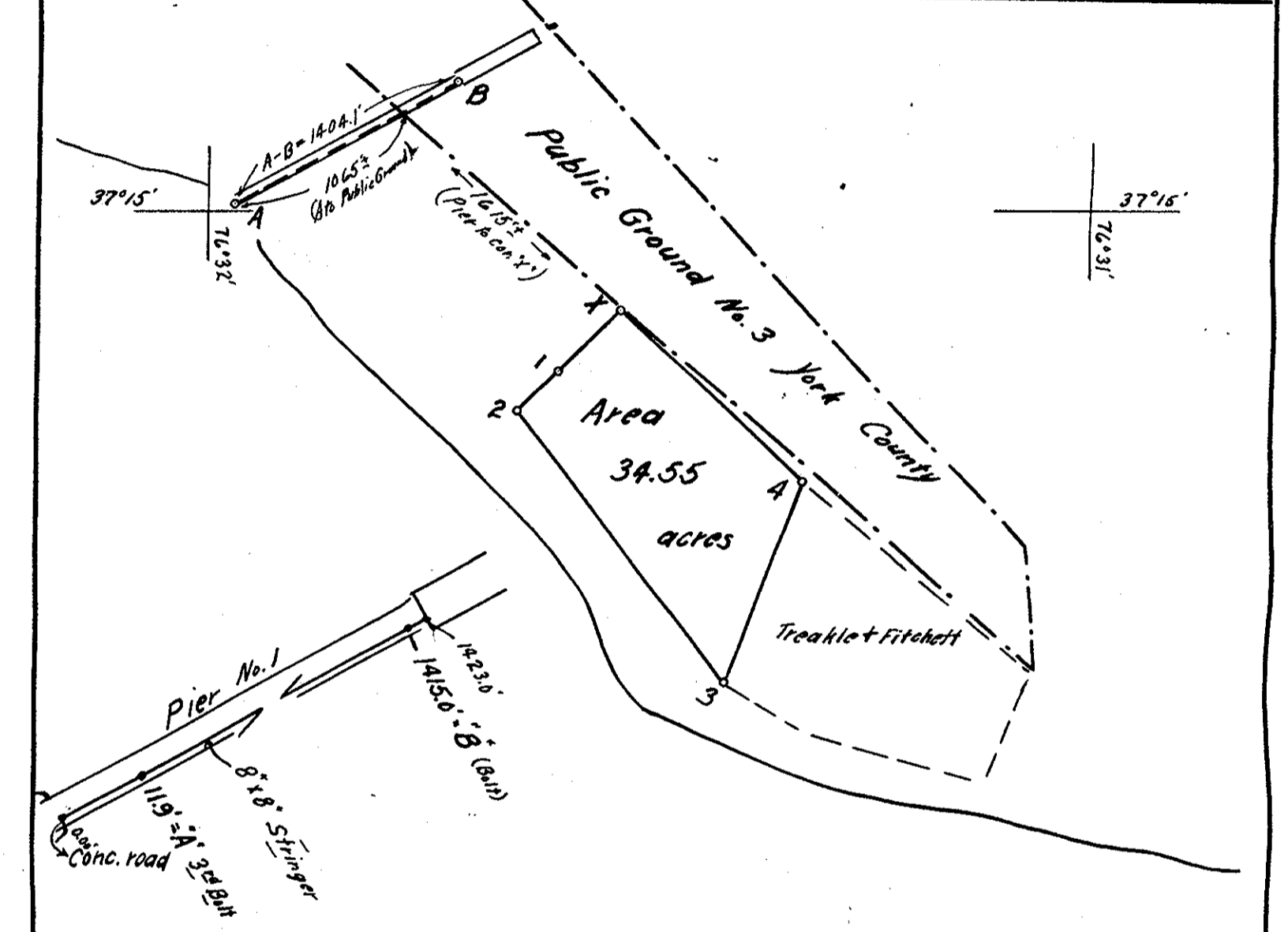
DRAWN BY: WDC TRACED BY WDC DATE OF DRAWING: _____

CHECKED BY: _____

APPROVED BY: *James W. Lewis* 127-C
ENGINEER

SURVEYED BY: *J.P. Carter* YORKTOWN VA
Clay Mann
Chas. Burr ASSISTANTS
John Hill

DATE OF APPLICATION	COMMONWEALTH OF VIRGINIA COMMISSION OF FISHERIES	FOR OFFICE USE
DATE OF ASSIGNMENT		PLAT NO.
COUNTY RECORDED IN		MAP NO.
BOOK PAGE No. No.		FILE NO.



A		B	
55°51'	1	280°00'	
64°35'	2	288°53'	
72°30'	3	273°33'	
54°25'	4	257°55'	
43°31'	X	262°35'	
—	A	360°00'	
360°00'	B	—	

Note: In order to reach Public Ground move to cor. "X", which in line with cots. 1+2, 505' off shore.

Yorktown Monument
N. gable Marine Barracks
Center domer window of 3 domer base
(across river-High Bank)

OYSTER PLANTING GROUND

OF G. A. Tillage
IN York River
District No. 15 York COUNTY
Scale 1/1000 June 19 1947
Surveyed by: *W.H. Radford*
CERTIFIED SURVEYOR
221-02-36