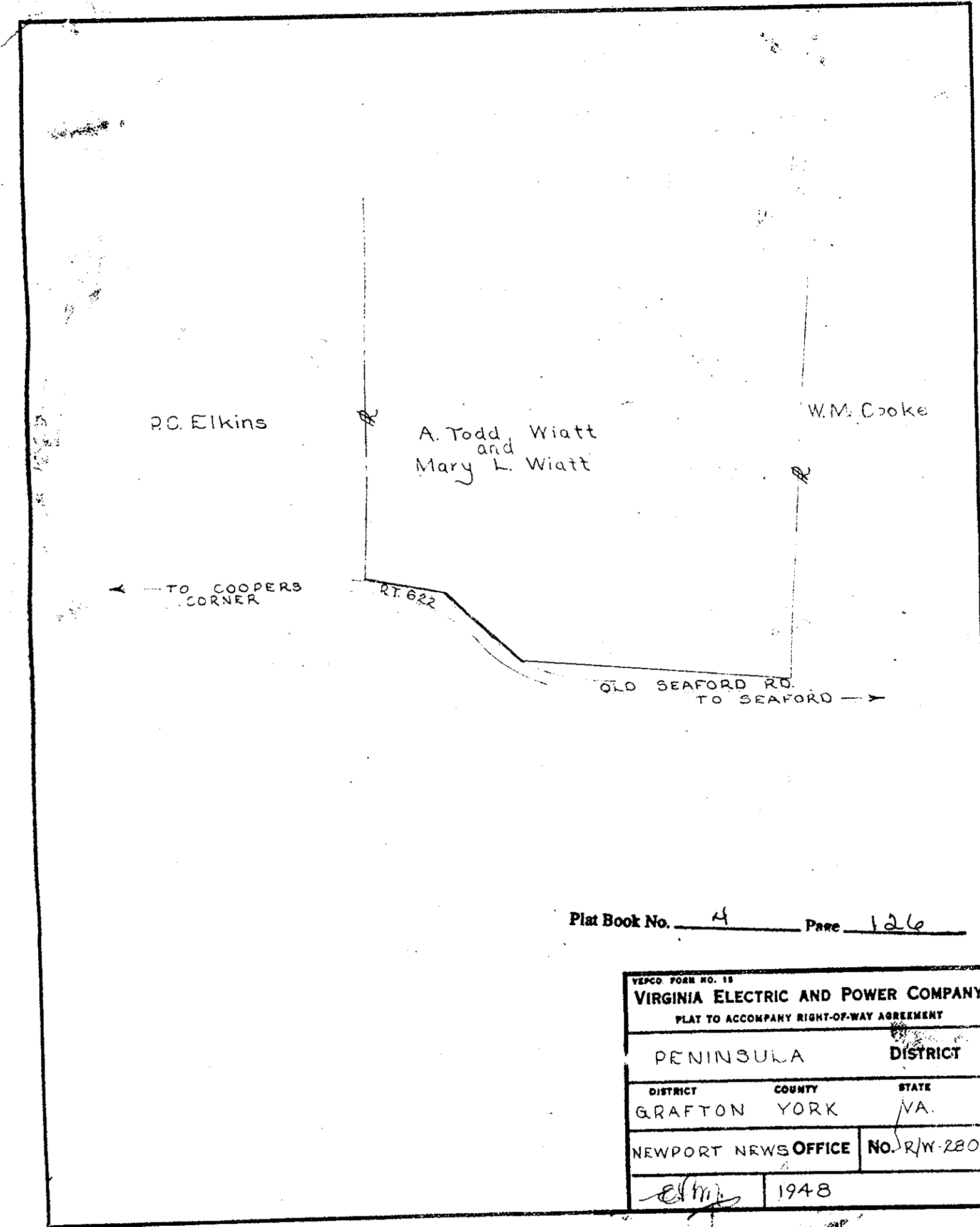
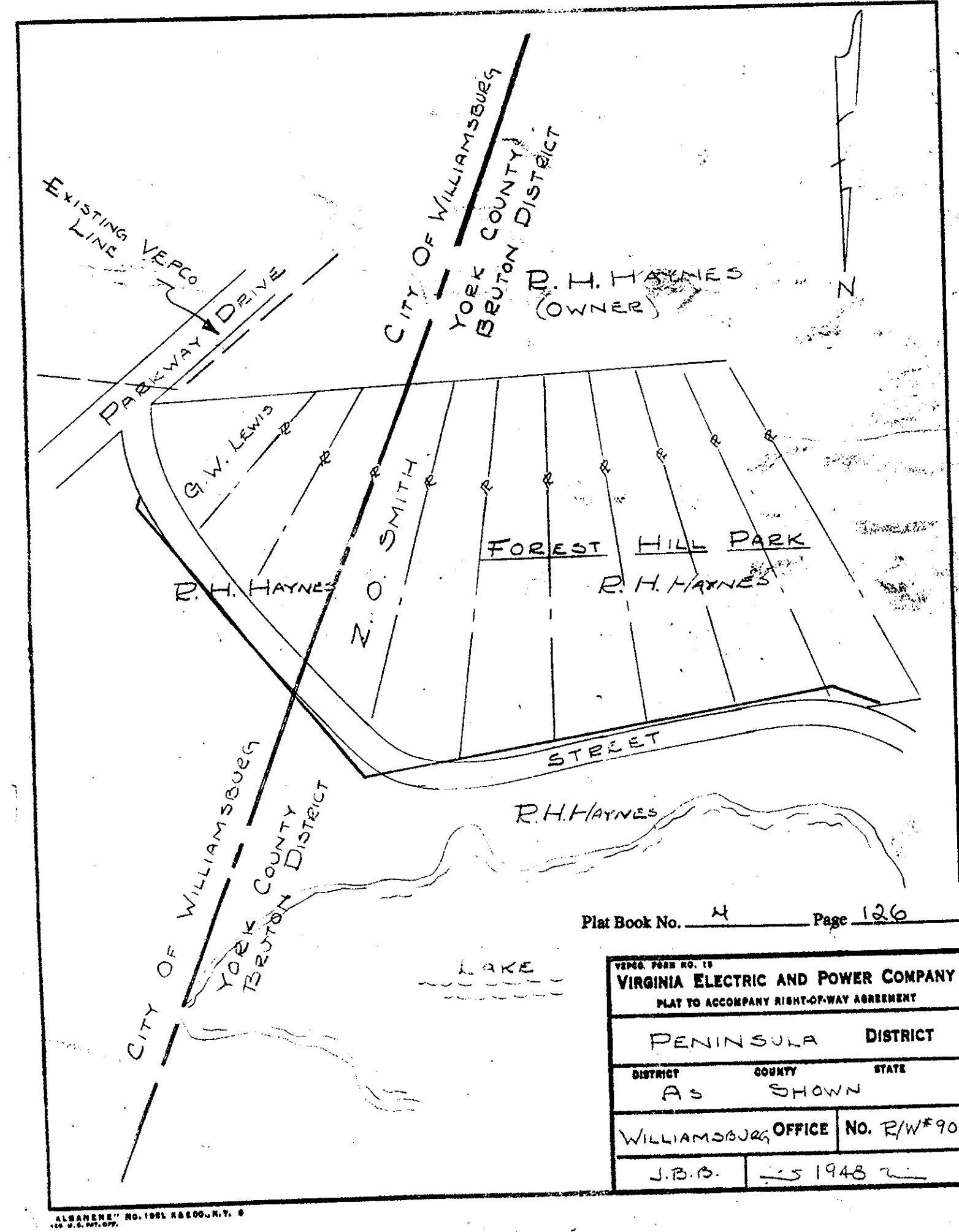


AB# 64 of 125

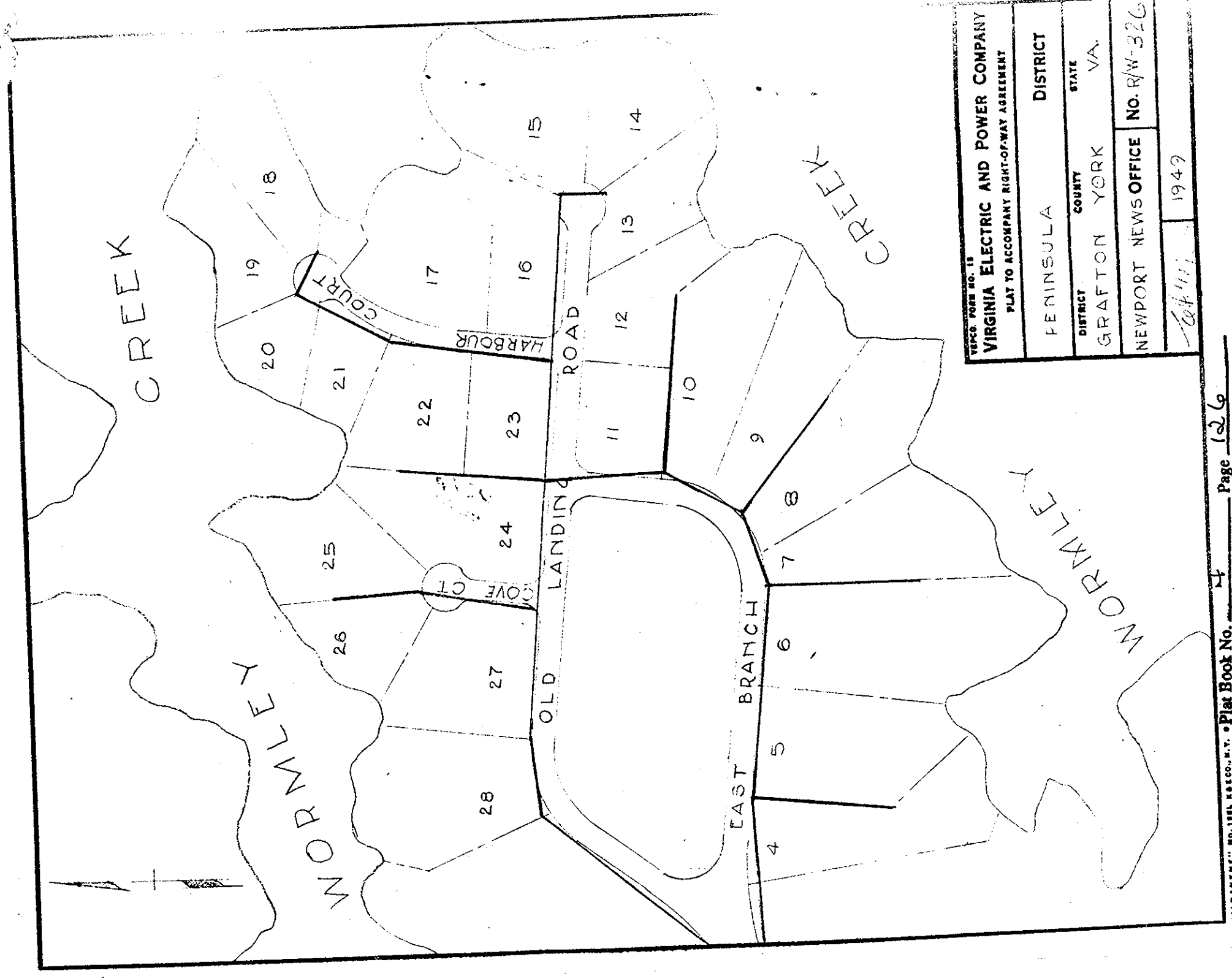
AB# 64 of 153



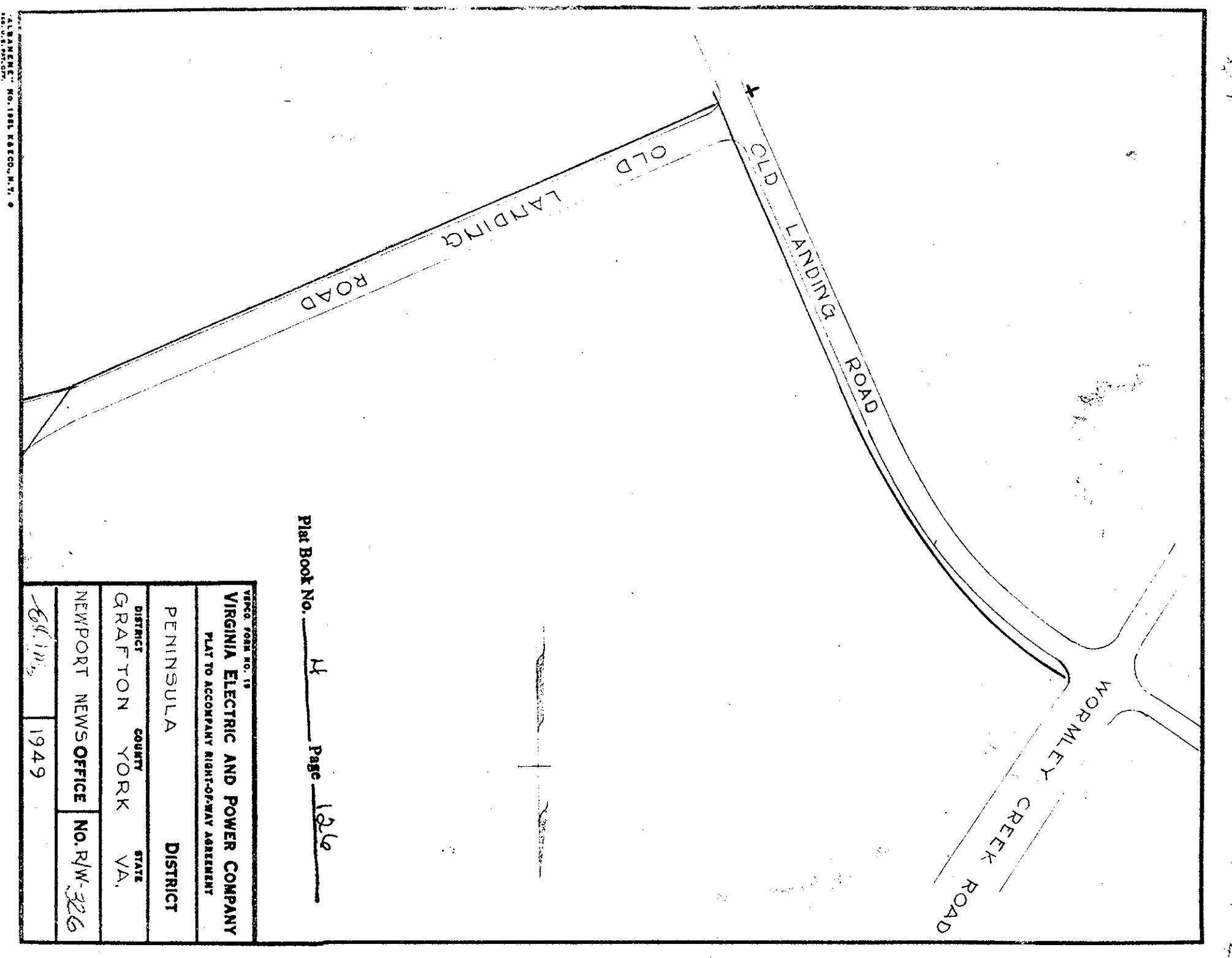
VIRGINIA ELECTRIC AND POWER COMPANY PLAT TO ACCOMPANY RIGHT-OF-WAY AGREEMENT		
PENINSULA	DISTRICT	
DISTRICT	COUNTY	STATE
GRAFTON	YORK	VA.
NEWPORT NEWS OFFICE	NO. R/W-280	
<i>Edm</i>	1948	



VIRGINIA ELECTRIC AND POWER COMPANY PLAT TO ACCOMPANY RIGHT-OF-WAY AGREEMENT		
PENINSULA	DISTRICT	
DISTRICT	COUNTY	STATE
AS SHOWN		
WILLIAMSBURG OFFICE	NO. R/W#90	
J.B.O.	1948	



VIRGINIA ELECTRIC AND POWER COMPANY PLAT TO ACCOMPANY RIGHT-OF-WAY AGREEMENT		
PENINSULA	DISTRICT	
DISTRICT	COUNTY	STATE
GRAFTON	YORK	VA.
NEWPORT NEWS OFFICE	NO. R/W-326	
<i>Edm</i>	1949	



VIRGINIA ELECTRIC AND POWER COMPANY PLAT TO ACCOMPANY RIGHT-OF-WAY AGREEMENT		
PENINSULA	DISTRICT	
DISTRICT	COUNTY	STATE
GRAFTON	YORK	VA.
NEWPORT NEWS OFFICE	NO. R/W-326	
<i>Edm</i>	1949	