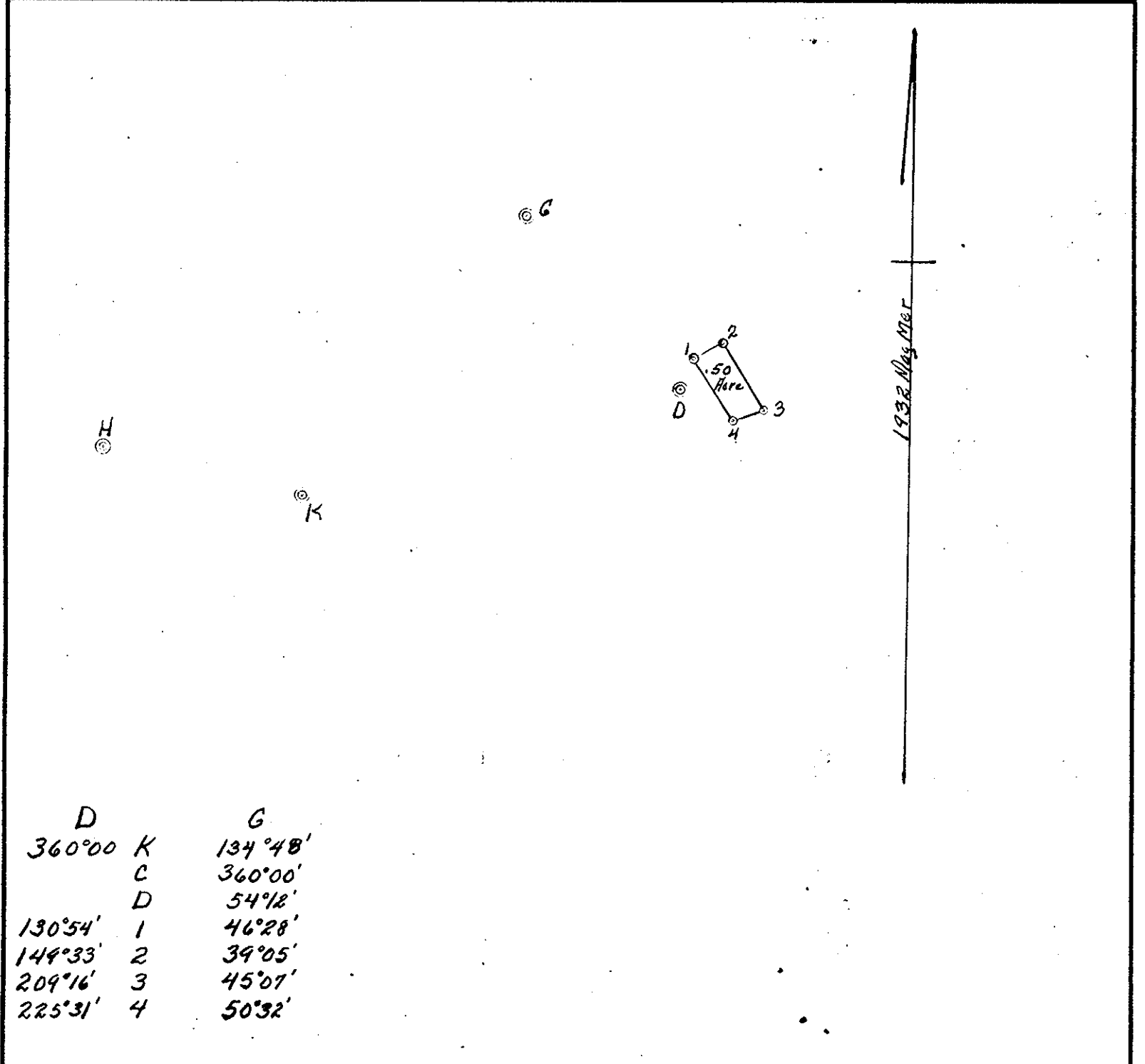


Plat Book No. 4 Page 190  
Oyster Bl. 3, p. 336

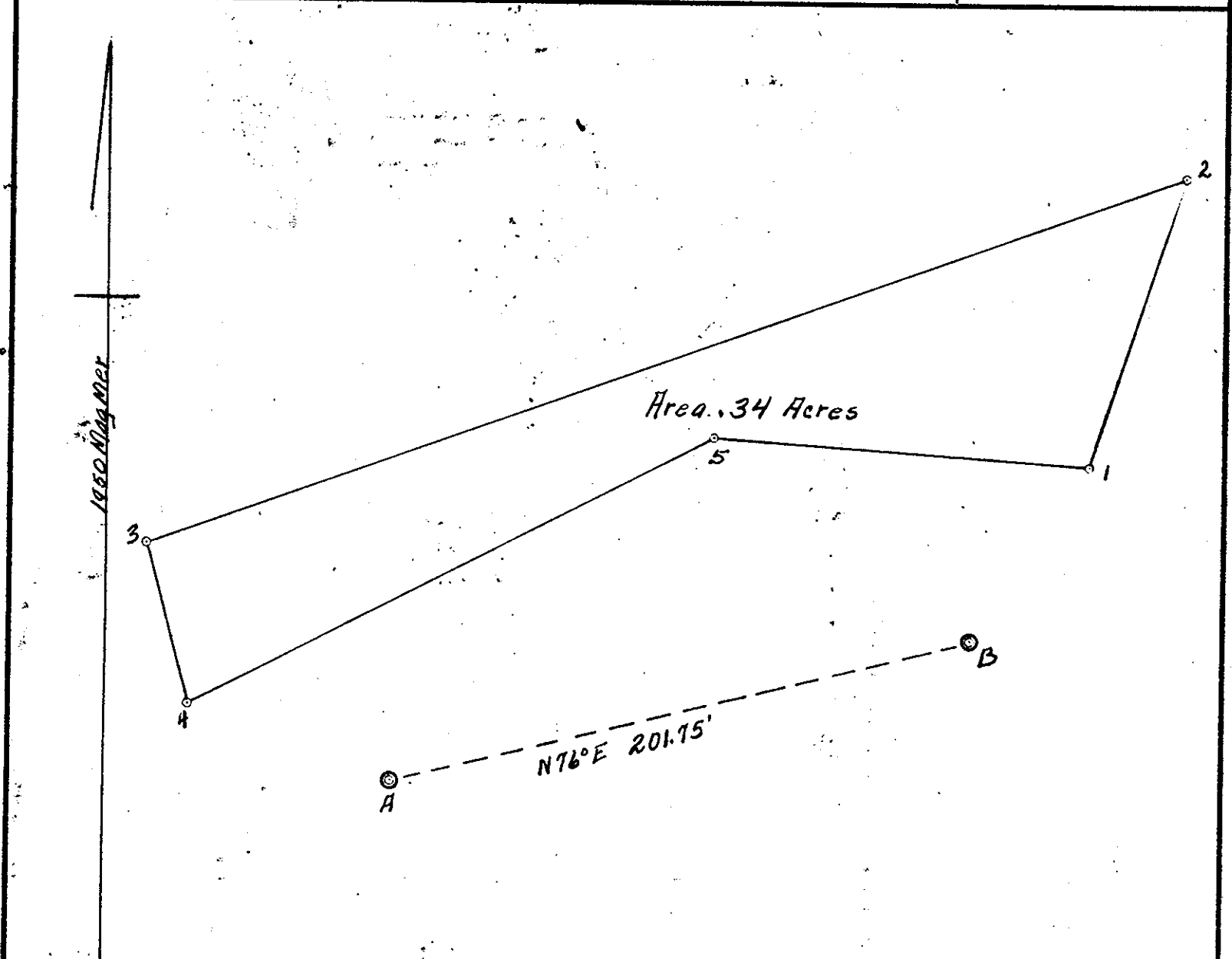
DATE OF APPLICATION	<b>COMMONWEALTH OF VIRGINIA COMMISSION OF FISHERIES</b>	FOR OFFICE USE
DATE OF ASSIGNMENT		PLAT NO.
COUNTY RECORDED IN		MAP NO. 241
BOOK PAGE		FILE NO.



D	G
360°00'	134°48'
K	360°00'
C	54°12'
D	46°28'
130°54'	1
149°33'	2
209°16'	3
225°31'	4
	50°32'

Riparian  
**OYSTER PLANTING GROUND**  
OF  
Richard L. Hicks  
IN  
Cheesemans Creek  
District No. 15 York COUNTY  
Scale 5000 Oct 19 1950  
Surveyed by J.K. Sinclair C.S. 445  
CERTIFIED SURVEYOR

DATE OF APPLICATION	<b>COMMONWEALTH OF VIRGINIA COMMISSION OF FISHERIES</b>	FOR OFFICE USE
DATE OF ASSIGNMENT		PLAT NO.
COUNTY RECORDED IN		MAP NO.
BOOK PAGE		FILE NO.

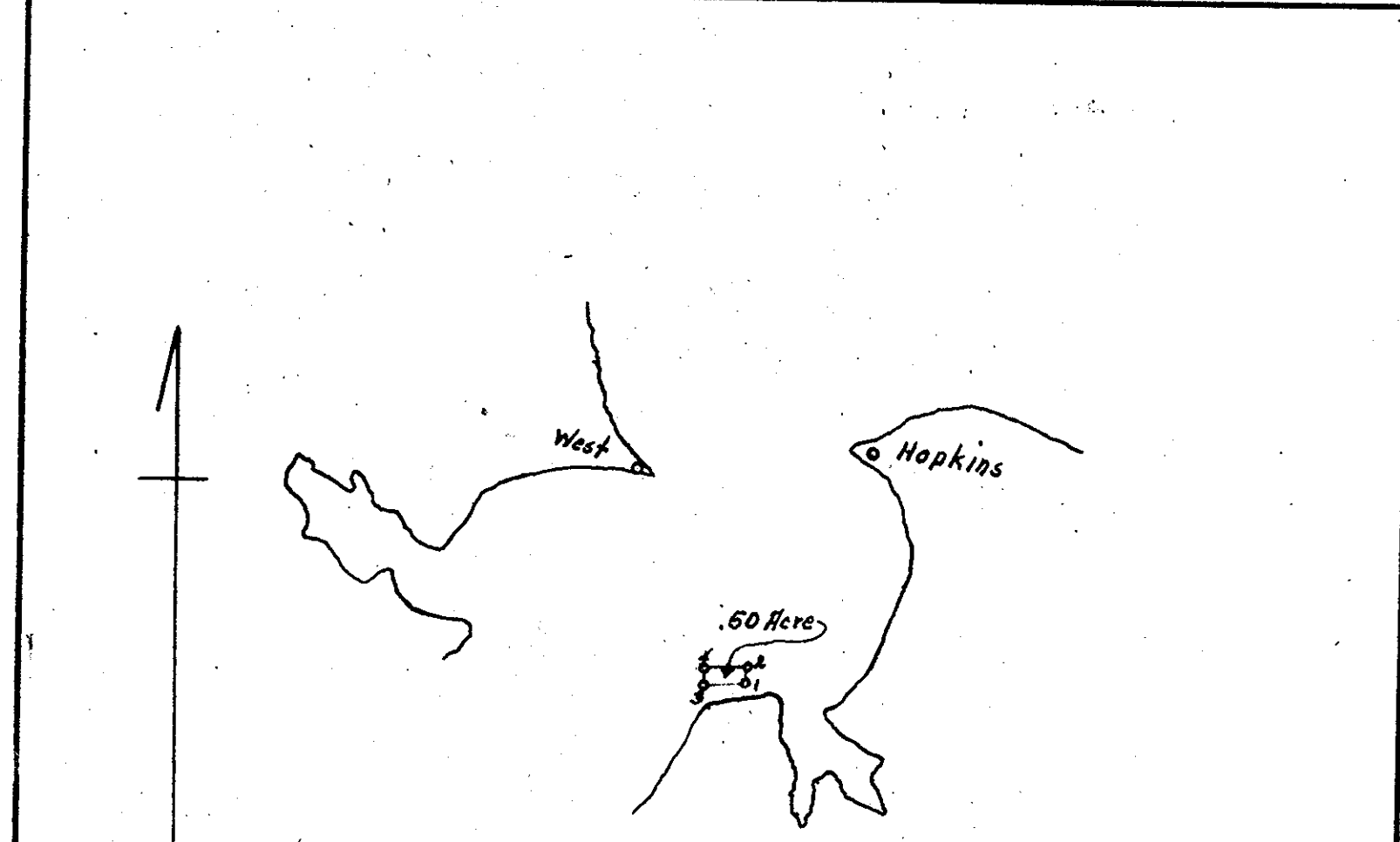


A	B
360°00'	360°00'
B	138°16'
349°13'	1
336°22'	2
238°20'	3
214°48'	4
326°51'	5
	9°11' (approx. behind large pine)
	52°35'

Line 1, 4, 5 is approx. low water  
" 2, 3 " " of cove  
Stations A and B, placed by this survey, are in the Magnus yard on the edge of the shore line.  
Station A is a 3/4" pipe  
" B " 2" pipe

Riparian  
**OYSTER PLANTING GROUND**  
OF  
George O. Magnus  
IN  
Magnus Cove, Ship Point Creek, Pasquason River  
District No. 16 York COUNTY  
Scale 600 Nov 8 1950  
Surveyed by J.K. Sinclair C.S. 445  
CERTIFIED SURVEYOR

DATE OF APPLICATION	<b>COMMONWEALTH OF VIRGINIA COMMISSION OF FISHERIES</b>	FOR OFFICE USE
DATE OF ASSIGNMENT		PLAT NO.
COUNTY RECORDED IN		MAP NO.
BOOK PAGE		FILE NO.



Hopkins	Howard	West
360°00'	189°30'	360°00'
Davis	185°34'	67°09'
Hopkins	187°23'	2
1	192°34'	3
2	195°34'	4
3		76°32'
4		75°43'

Station Hopkins is a U.S.G.S. Monument  
West is a V.F.C. concrete marker about 12" square  
Both stations easily found.

Riparian  
**OYSTER PLANTING GROUND**  
OF  
H.H. Shackelford  
IN  
Pasquason River  
District No. 15/16 York COUNTY  
Scale 1000 Nov 9 1950  
Surveyed by J.K. Sinclair C.S. 445  
CERTIFIED SURVEYOR