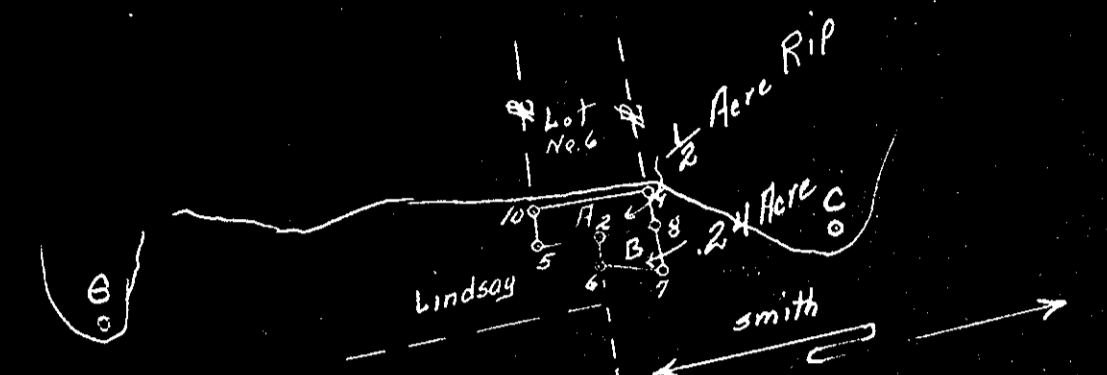


Recorded July 29, 1952  
See Chapter 13 of Transfer Rev. No. 3  
Page 373

DATE OF APPLICATION		<b>COMMONWEALTH OF VIRGINIA COMMISSION OF FISHERIES</b>	FOR OFFICE USE	
DATE OF ASSIGNMENT			PLAT NO.	
COUNTY RECORDED IN			MAP NO.	241
BOOK	PAGE		FILE NO.	



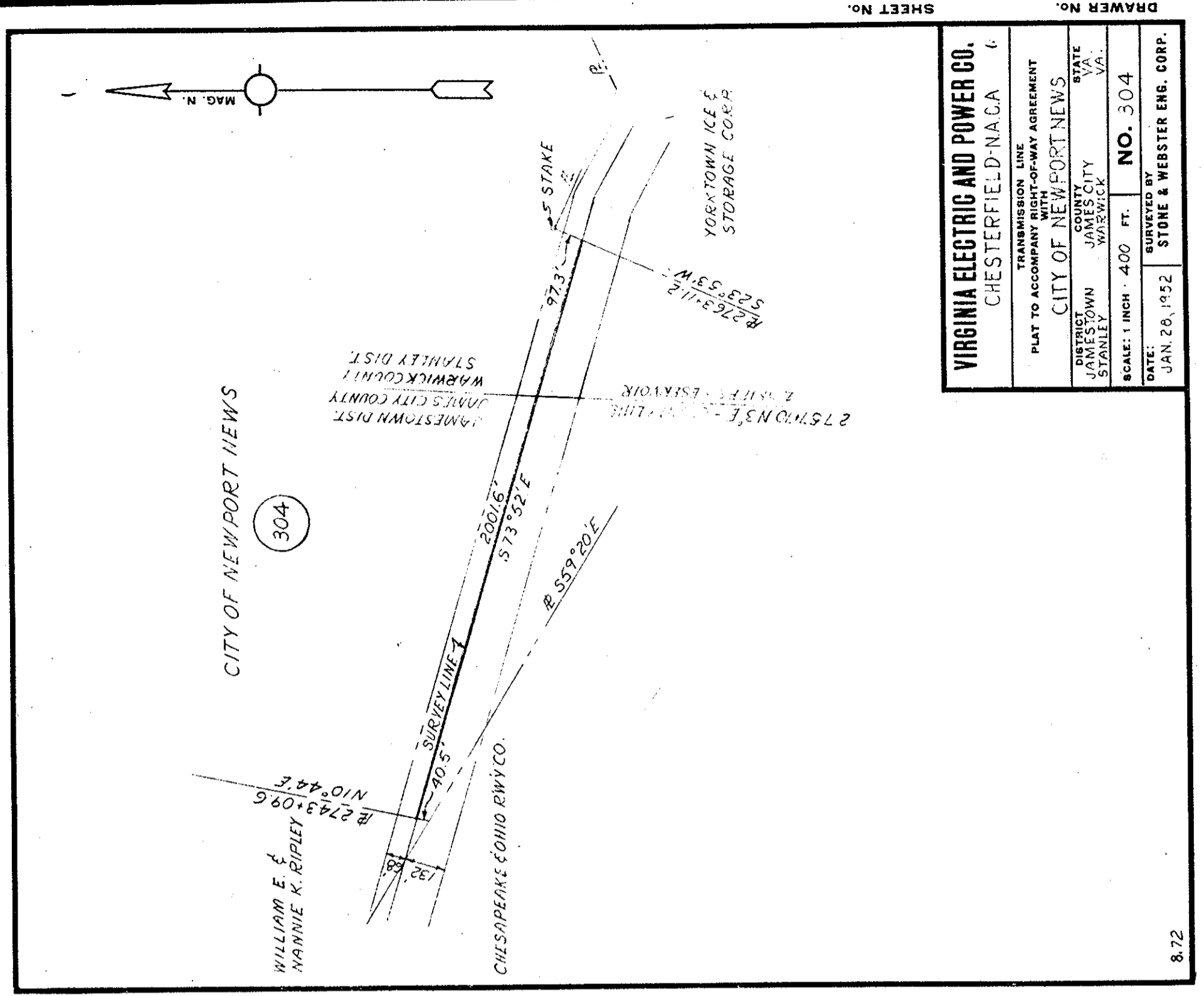
A is 1/2 Acre Riparian  
B is .24 Acre transferred from John Smith, Jr. out  
of 8.65 Acres. See plat 23, map 241 and  
Plat File 3119.

A	B	C	D	
360°00'	A	360°00'	360°00'	
	B	88°00'	99°56'	
245°48'	5	91°36'	77°22'	
250°11'	6	86°21'	86°06'	
257°22'	7	30°51'	92°45'	
260°08'	8	95°21'	38°07'	
262°00'	9	106°37'	84°35'	
248°29'	10	97°55'	74°30'	
315°47'		221°18'		
7°12'		343°13'	130°27'	& Silo
93°27'				sw gable high Smith hse
177°21'	25°04'		145°37'	Ngable bungalow
196°33'	58°44'		233°51'	Center of east chy.
248°40'			58°35'	Nedge chy Bossie hse
				Sgable sharp roof hse (Caldwell)

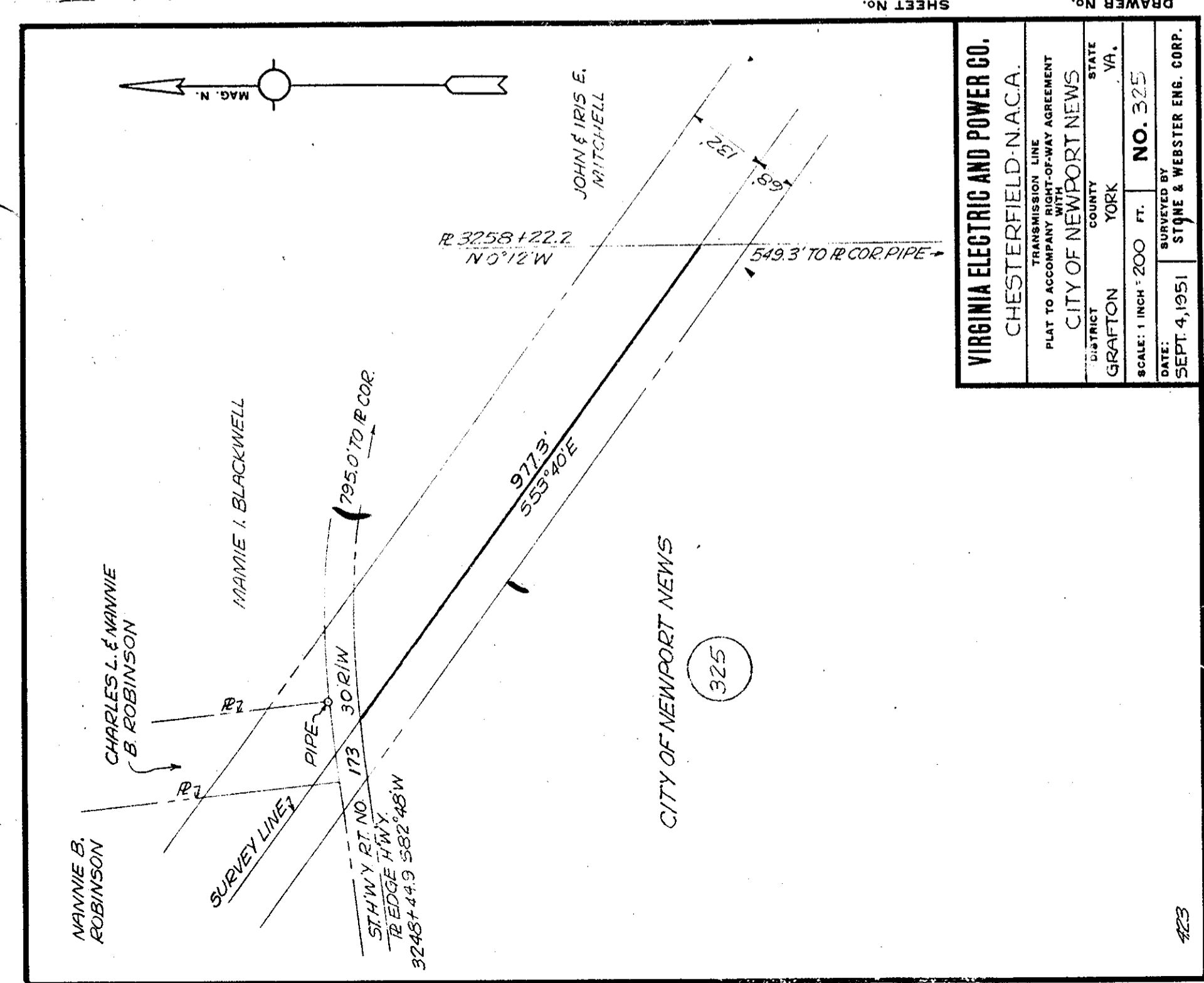
A	B	C	
360°00'	B	360°00'	126°47'
252°21'	2	220°11'	
296°57'	C		

**OYSTER PLANTING GROUND**  
Mrs Hazel M. White  
Cheesemans Creek  
IN  
York COUNTY

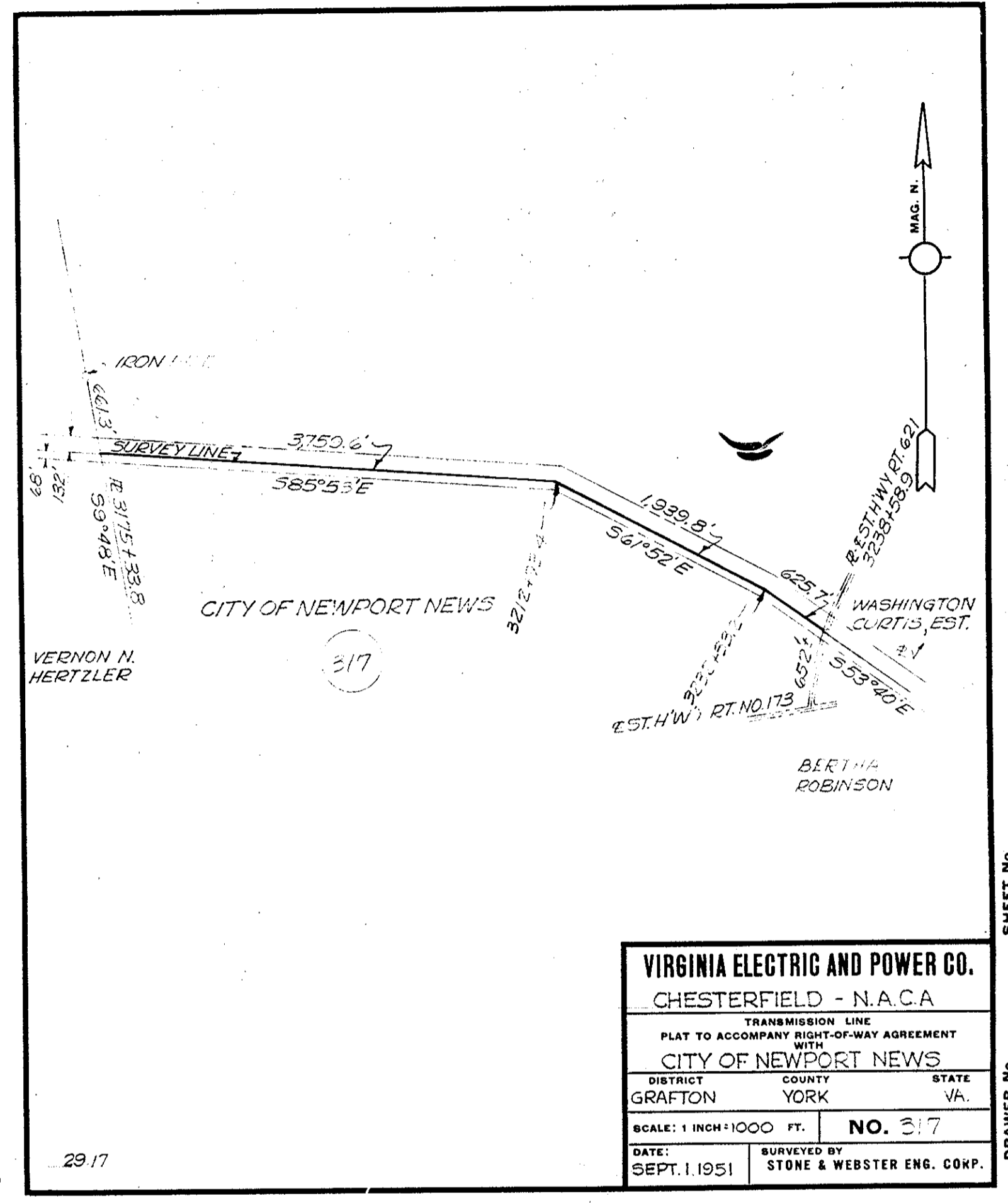
Plat Book No. 5 Page 34 District No. 15 York COUNTY  
Scale 5000 April 17 1952  
Surveyed by J.K. Smith C.L.S.-495  
5A-18



<b>VIRGINIA ELECTRIC AND POWER CO.</b> CHESTERFIELD - N.A.C.A.	
TRANSMISSION LINE	PLAT TO ACCOMPANY RIGHT-OF-WAY AGREEMENT WITH CITY OF NEWPORT NEWS
DISTRICT	CITY OF NEWPORT NEWS
COUNTY	JAMES CITY
STATE	VA.
SCALE	1 INCH = 400 FT.
NO.	304
DATE	JAN 28, 1952
SURVEYED BY	STONE & WEBSTER ENG. CORP.



<b>VIRGINIA ELECTRIC AND POWER CO.</b> CHESTERFIELD - N.A.C.A.	
TRANSMISSION LINE	PLAT TO ACCOMPANY RIGHT-OF-WAY AGREEMENT WITH CITY OF NEWPORT NEWS
DISTRICT	CITY OF NEWPORT NEWS
COUNTY	GRAFTON
STATE	VA.
SCALE	1 INCH = 200 FT.
NO.	325
DATE	SEPT 4, 1951
SURVEYED BY	STONE & WEBSTER ENG. CORP.



<b>VIRGINIA ELECTRIC AND POWER CO.</b> CHESTERFIELD - N.A.C.A.	
TRANSMISSION LINE	PLAT TO ACCOMPANY RIGHT-OF-WAY AGREEMENT WITH CITY OF NEWPORT NEWS
DISTRICT	CITY OF NEWPORT NEWS
COUNTY	GRAFTON
STATE	VA.
SCALE	1 INCH = 1000 FT.
NO.	317
DATE	SEPT. 1, 1951
SURVEYED BY	STONE & WEBSTER ENG. CORP.