

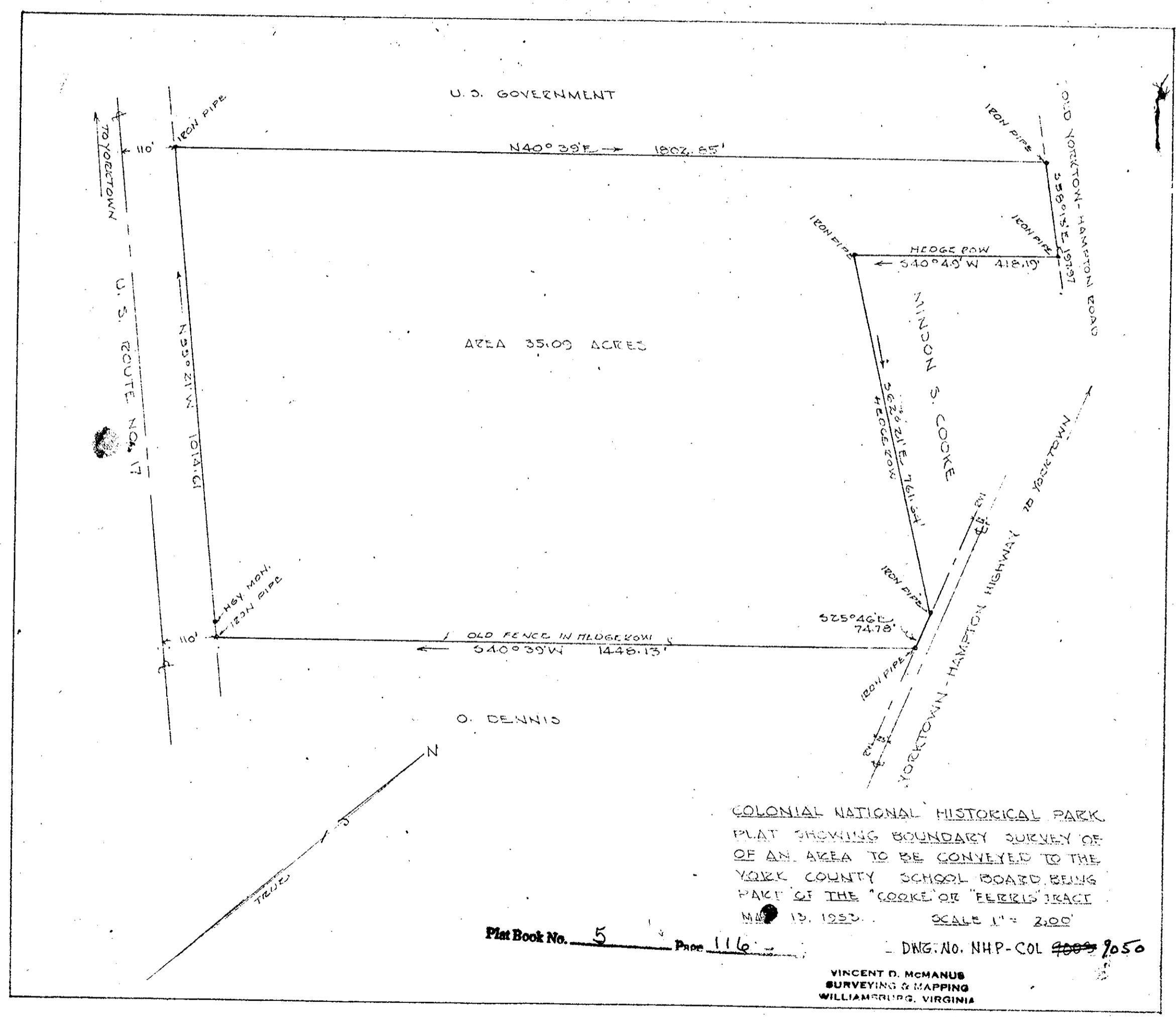
Plat Book No. 5 Page 116

COLONIAL NATIONAL HISTORICAL PARK
 PLAT SHOWING SURVEY OF LAND TO BE
 CONVEYED TO THE YORK COUNTY SCHOOL
 BOARD, SITUATED ON U.S. ROUTE NO. 17 &
 GOODLEY ROAD, NELSON DIST. YORK COUNTY VA.
 MAY 16, 1953 SCALE 1" = 100'
 DRAWING NO. NHP-COL 9051

VINCENT D. McMANUS
SURVEYING & MAPPING
WILLIAMSBURG, VIRGINIA

REVISED JUNE 16, 1953 V.D.M.M.
REVISED JUNE 4, 1953, V.D.M.M.

Plat Book 5 p. 116



Plat Book No. 5 Page 116

COLONIAL NATIONAL HISTORICAL PARK
 PLAT SHOWING BOUNDARY SURVEY OF
 AN AREA TO BE CONVEYED TO THE
 YORK COUNTY SCHOOL BOARD BEING
 PART OF THE "COOKE" OR "FERRELL" TRACT
 MAR 13, 1953 SCALE 1" = 200'

DWG. NO. NHP-COL 9050
 VINCENT D. McMANUS
 SURVEYING & MAPPING
 WILLIAMSBURG, VIRGINIA

Plat Book 5 p. 116