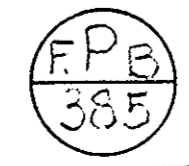
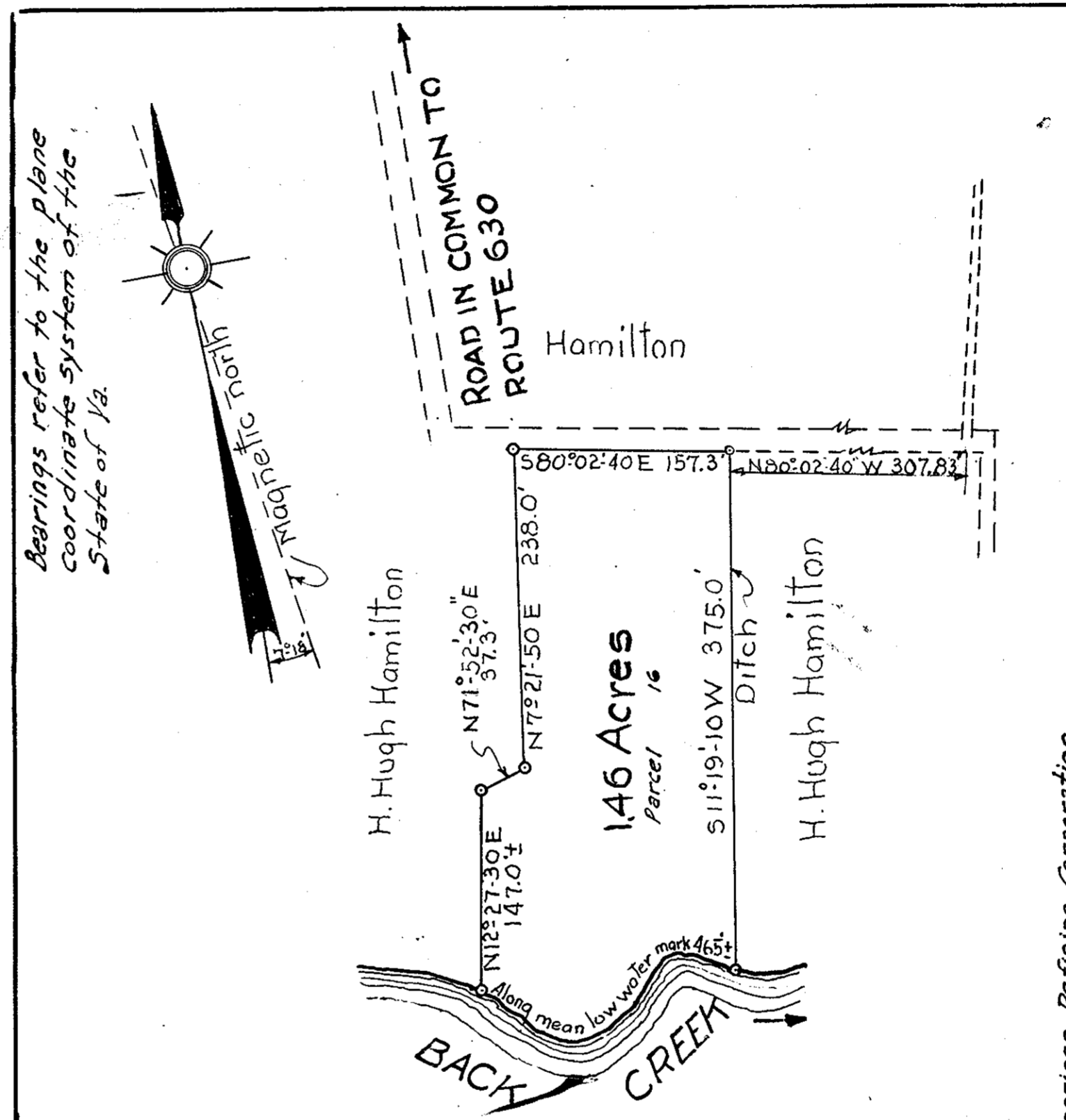


Map of 2,131 Acres of land situated on the west side of U.S. Route 17 about 4 miles south of Yorktown York County Virginia. Being a portion of the land belonging to L.R. O'Hara
 Aug 21, 1953 Scale 1"=100

F.P.B. 355
 N.B. 122 P. 17
 J. Temple Waddill
 Certified Civil Engineer
 Richmond, Va.



ALLENBROSCHER NO. 1951 441 CO., N.Y.



Map of 1.46 Acres of land situated on the north side of Back Creek in Gratton District, York County, Virginia. Belonging to J. Harold Cate
 Aug. 3, 1953 Scale 1"=100

J. Temple Waddill
 Certified Civil Engineer
 Richmond Virginia. N.B. 195 P. 47



Surveyed for Pan American Refining Corporation