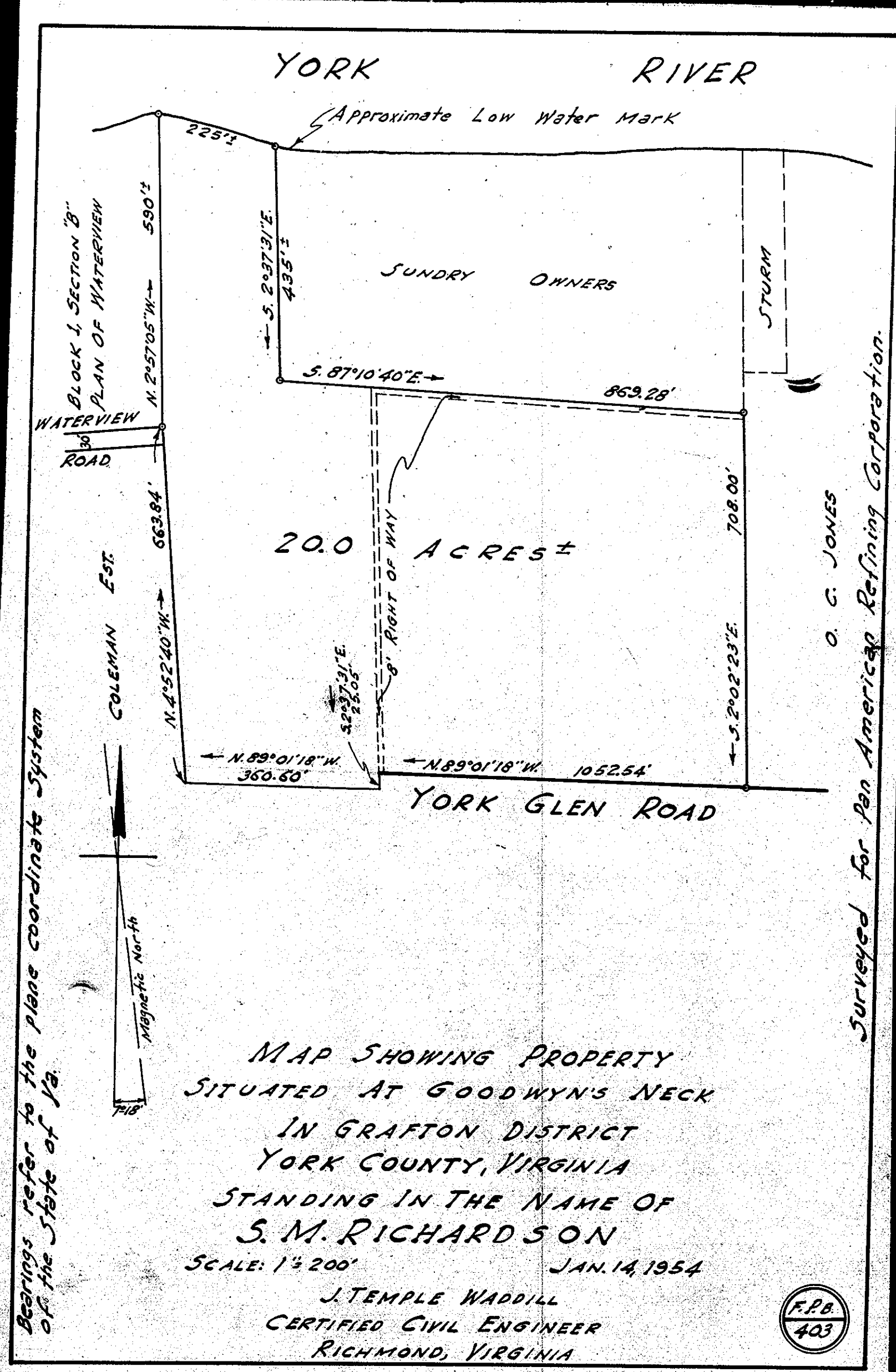


MAP OF SECTION C  
SUBDIVISION OF MARLBANK FARM  
YORK COUNTY, VIRGINIA  
SCALE: 1" = 200'      JUNE 28, 1946

J. TEMPLE WADDILL  
CERTIFIED CIVIL ENGINEER  
RICHMOND, VIRGINIA



MAP SHOWING PROPERTY SITUATED AT GOODWYN'S NECK  
IN GRAFTON DISTRICT  
YORK COUNTY, VIRGINIA  
STANDING IN THE NAME OF  
**S. M. RICHARDSON**  
SCALE: 1" = 200'      JAN. 14, 1954

J. TEMPLE WADDILL  
CERTIFIED CIVIL ENGINEER  
RICHMOND, VIRGINIA



Surveyed for Pan American Refining Corporation.  
O. G. JONES