

Plat July 22, 1954
 Surveyed by *Wm. D. Byrnes, Clerk*
 Scale 2500
 District No. 15
 COUNTY York
 F. L. HOGGE & BROS.
 WORMLEYS CREEK (South Branch)
 OYSTER PLANTING GROUND

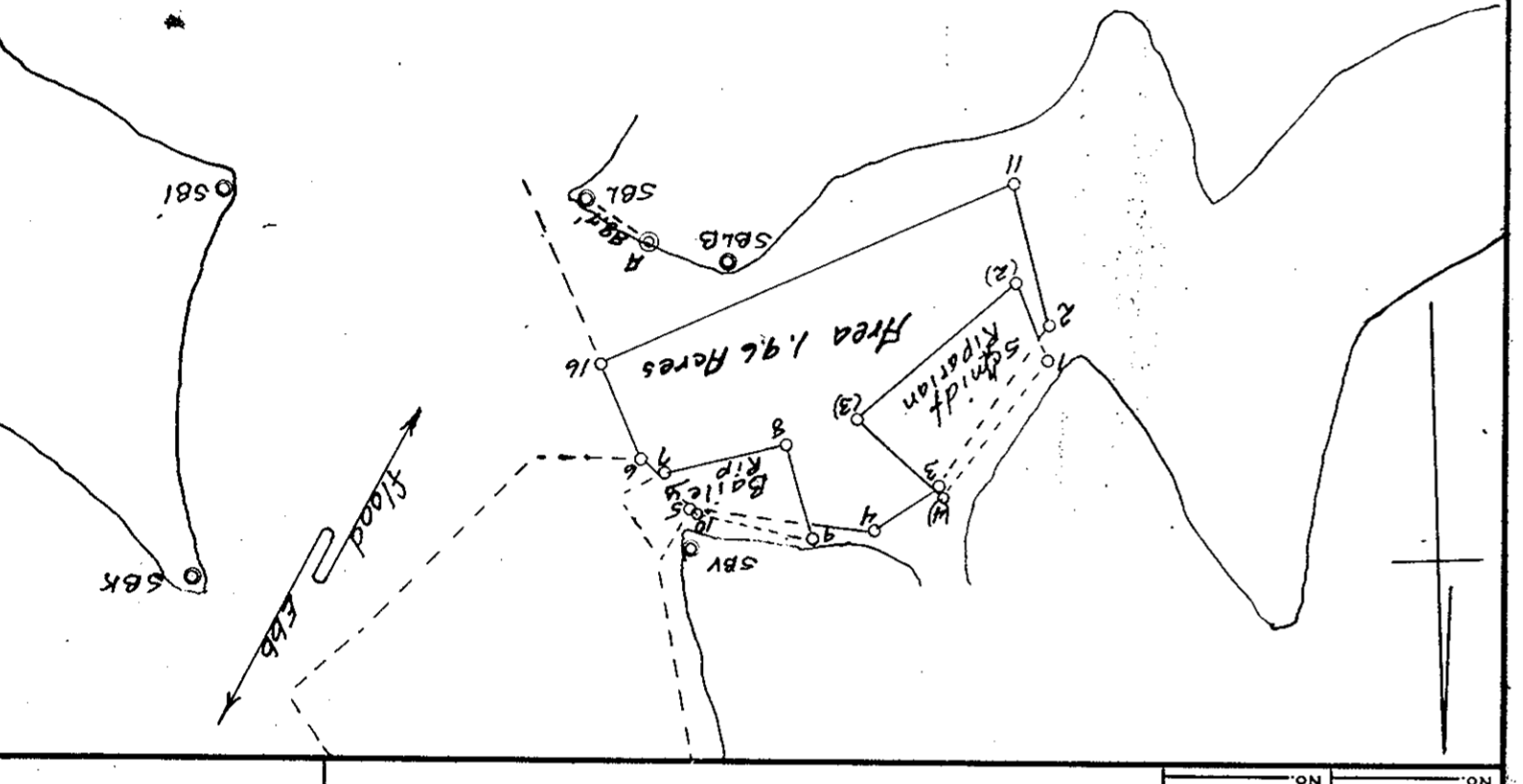
This plat includes most of 2.21 Acres and takes the place of it.

SVB	58X	360.00	58L	360.00
	58Y	41.21	58Y	20.39
	58Z	360.00	58Z	360.00
	58A	319.52	58A	319.52
	58B	350.51	58B	350.51
	58C	196.37	58C	196.37
	58D	134.25	58D	134.25
	58E	285.42	58E	285.42
	58F	285.42	58F	285.42
	58G	182.31	58G	182.31
	58H	60.24	58H	60.24
	58I	549.34	58I	549.34
	58J	290.25	58J	290.25
	58K	380.59	58K	380.59
	58L	251.01	58L	251.01
	58M	3.58	58M	3.58
	58N	171.54	58N	171.54

SE. Gable Butterworth hse
 Red Oak 7 steps distant
 SE. Gable hse near Sta. 58L
 Chy. Butterworth cottage
 Nch. Two story hse

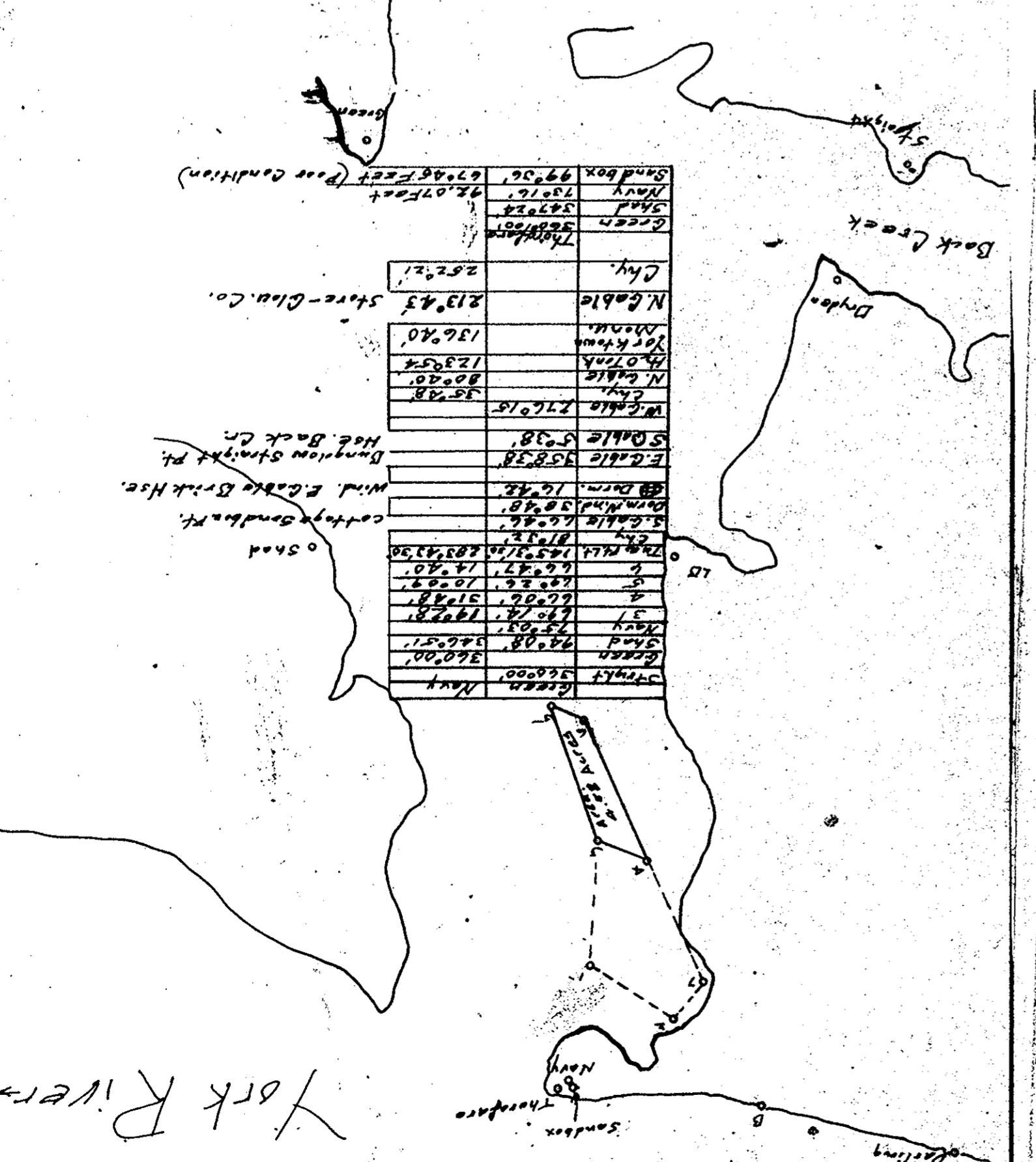
SVB	58Y	153.25	58Y	153.25
	58Z	171.18	58Z	171.18
	58A	180.18	58A	180.18
	58B	91.46	58B	91.46
	58C	65.15	58C	65.15
	58D	325.87	58D	325.87
	58E	68.21	58E	68.21
	58F	317.20	58F	317.20
	58G	293.28	58G	293.28
	58H	78.15	58H	78.15
	58I	360.00	58I	360.00
	58J	382.06	58J	382.06
	58K	560.00	58K	560.00
	58L	9.01	58L	9.01
	58M	153.03	58M	153.03

Notes on Smith Riparian H

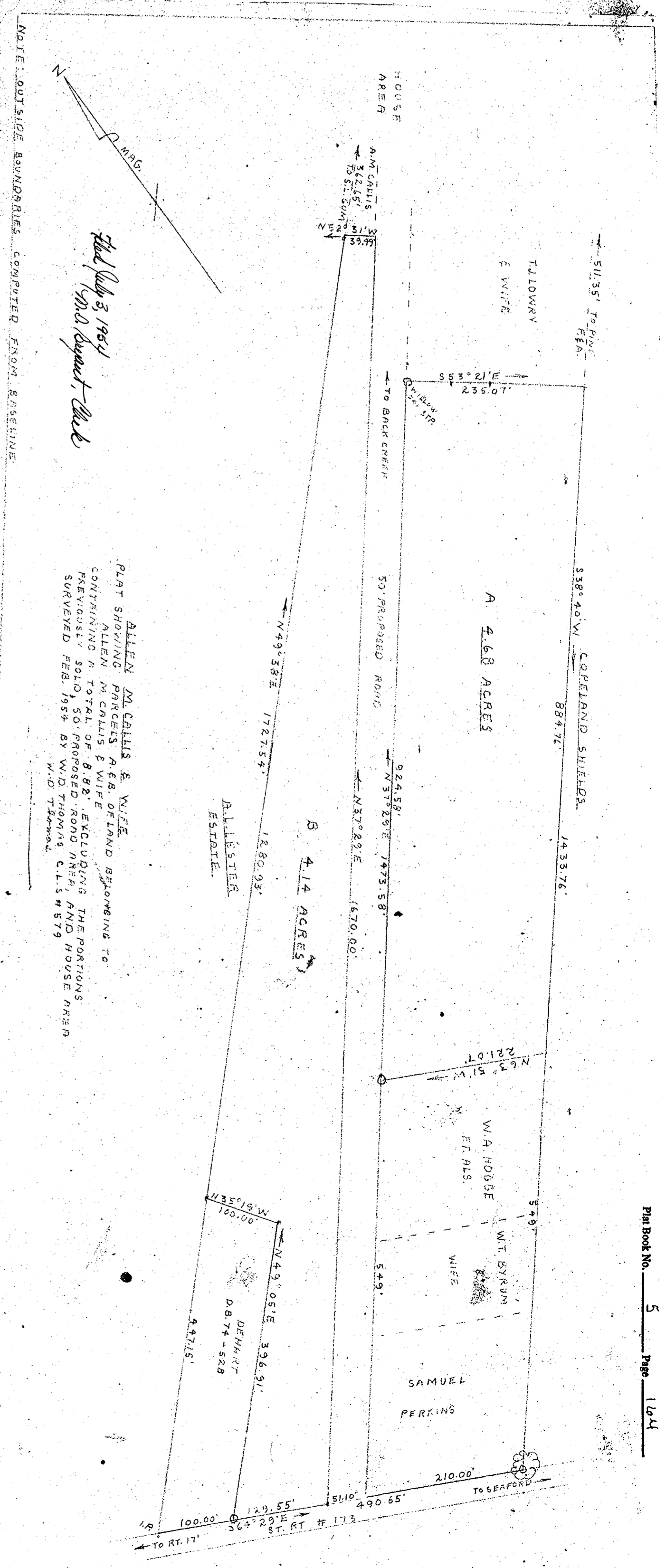


DATE OF APPLICATION	
DATE OF ASSIGNMENT	
COUNTY RECORDED IN	
BOOK	
PAGE	
FOR OFFICE USE	
PLAT NO.	
MAP NO.	246
FILE NO.	

Plat July 22, 1954
 Surveyed by *Wm. D. Byrnes, Clerk*
 Scale 10,000
 District No. 15
 COUNTY York
 F. L. DANSON
 Thorspore of York River
 OYSTER PLANTING GROUND



DATE OF APPLICATION	
DATE OF ASSIGNMENT	
COUNTY RECORDED IN	
BOOK	
PAGE	
FOR OFFICE USE	
PLAT NO.	
MAP NO.	
FILE NO.	



ALLEN M. CALLIS & WIFE
 PLAT SHOWING PARCELS A & B OF LAND BELONGING TO
 ALLEN M. CALLIS & WIFE
 CONTAINING A TOTAL OF 8.82 ACRES EXCLUDING THE PORTIONS
 PREVIOUSLY SOLD, SO PROPOSED ROAD HERE AND HOUSE AREA
 SURVEYED FEB. 1954 BY W.D. THOMAS C.L.S. # 879
 W.D. THOMAS