

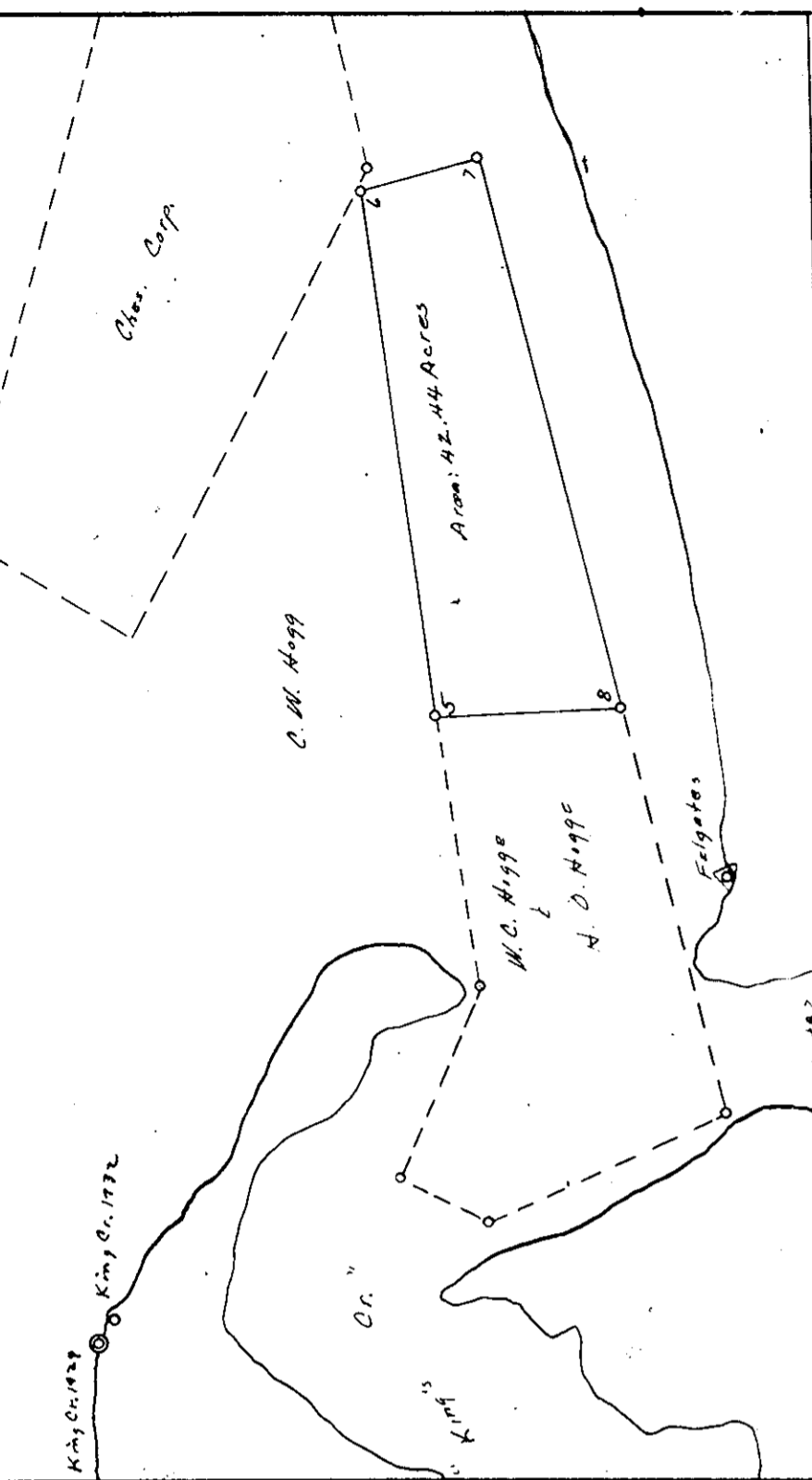
King's Mill	Felgate's	King's Mill
King's Mill	360° 00'	360° 00'
H.O. Tank	300° 00'	300° 00'
1	300° 00'	300° 00'
2	300° 00'	300° 00'
3	300° 00'	300° 00'
4	300° 00'	300° 00'
5	300° 00'	300° 00'
6	300° 00'	300° 00'
7	300° 00'	300° 00'
8	300° 00'	300° 00'
9	300° 00'	300° 00'
10	300° 00'	300° 00'
11	300° 00'	300° 00'
12	300° 00'	300° 00'
13	300° 00'	300° 00'
14	300° 00'	300° 00'
15	300° 00'	300° 00'
16	300° 00'	300° 00'
17	300° 00'	300° 00'
18	300° 00'	300° 00'
19	300° 00'	300° 00'
20	300° 00'	300° 00'
21	300° 00'	300° 00'
22	300° 00'	300° 00'
23	300° 00'	300° 00'
24	300° 00'	300° 00'
25	300° 00'	300° 00'
26	300° 00'	300° 00'
27	300° 00'	300° 00'
28	300° 00'	300° 00'
29	300° 00'	300° 00'
30	300° 00'	300° 00'
31	300° 00'	300° 00'
32	300° 00'	300° 00'
33	300° 00'	300° 00'
34	300° 00'	300° 00'
35	300° 00'	300° 00'
36	300° 00'	300° 00'
37	300° 00'	300° 00'
38	300° 00'	300° 00'
39	300° 00'	300° 00'
40	300° 00'	300° 00'
41	300° 00'	300° 00'
42	300° 00'	300° 00'
43	300° 00'	300° 00'
44	300° 00'	300° 00'
45	300° 00'	300° 00'
46	300° 00'	300° 00'
47	300° 00'	300° 00'
48	300° 00'	300° 00'
49	300° 00'	300° 00'
50	300° 00'	300° 00'

Note: This Map includes and takes place of 117.01 Acres.
 54.37 acres - W.C. & Hattie O. Hoge
 12.44 acres - J. R. & N. C. Carr
 20.20 acres - Abandoned
 117.01 acres formerly held by W.C. & Hattie O. Hoge

Plat Book No. 5 Page 177

OYSTER PLANTING GROUND
 OF
 W.C. and Hattie O. Hoge
 IN
 Mouth of Felgate's and Kings Creek on the York River
 District No. 15 York COUNTY
 Scale 1:1000 July 29 1954
 Surveyed by Charles J. Keenan
 K-4, 4 CERTIFIED SURVEYOR

Sub Oct. 29, 1954
M.D. Beyond Club



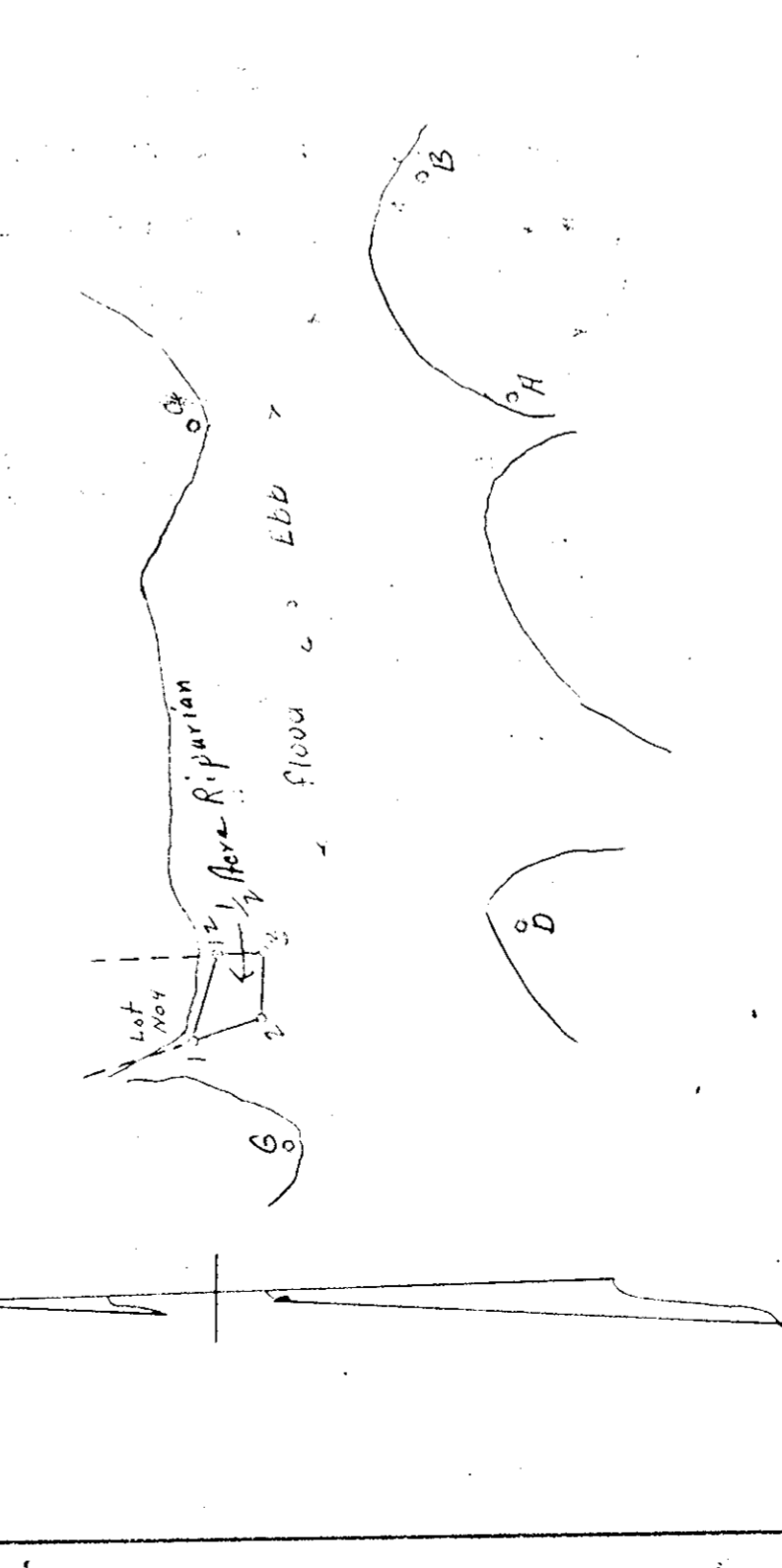
King's Mill	Felgate's	King's Mill
King's Mill	360° 00'	360° 00'
H.O. Tank	300° 00'	300° 00'
1	300° 00'	300° 00'
2	300° 00'	300° 00'
3	300° 00'	300° 00'
4	300° 00'	300° 00'
5	300° 00'	300° 00'
6	300° 00'	300° 00'
7	300° 00'	300° 00'
8	300° 00'	300° 00'
9	300° 00'	300° 00'
10	300° 00'	300° 00'
11	300° 00'	300° 00'
12	300° 00'	300° 00'
13	300° 00'	300° 00'
14	300° 00'	300° 00'
15	300° 00'	300° 00'
16	300° 00'	300° 00'
17	300° 00'	300° 00'
18	300° 00'	300° 00'
19	300° 00'	300° 00'
20	300° 00'	300° 00'
21	300° 00'	300° 00'
22	300° 00'	300° 00'
23	300° 00'	300° 00'
24	300° 00'	300° 00'
25	300° 00'	300° 00'
26	300° 00'	300° 00'
27	300° 00'	300° 00'
28	300° 00'	300° 00'
29	300° 00'	300° 00'
30	300° 00'	300° 00'
31	300° 00'	300° 00'
32	300° 00'	300° 00'
33	300° 00'	300° 00'
34	300° 00'	300° 00'
35	300° 00'	300° 00'
36	300° 00'	300° 00'
37	300° 00'	300° 00'
38	300° 00'	300° 00'
39	300° 00'	300° 00'
40	300° 00'	300° 00'
41	300° 00'	300° 00'
42	300° 00'	300° 00'
43	300° 00'	300° 00'
44	300° 00'	300° 00'
45	300° 00'	300° 00'
46	300° 00'	300° 00'
47	300° 00'	300° 00'
48	300° 00'	300° 00'
49	300° 00'	300° 00'
50	300° 00'	300° 00'

This comes out of 117.01 Acres in the Name of M. C. and N. C. Carr
 O. Hoge

Plat Book No. 5 Page 177

OYSTER PLANTING GROUND
 OF
 J. M. and N. C. Carr
 IN
 Mouth of Kings and Felgate's Crs. on York River
 District No. 15 York COUNTY
 Scale 1:1000 July 29 1954
 Surveyed by Charles J. Keenan
 K-4, 3 CERTIFIED SURVEYOR

Sub Oct. 29, 1954
M.D. Beyond Club

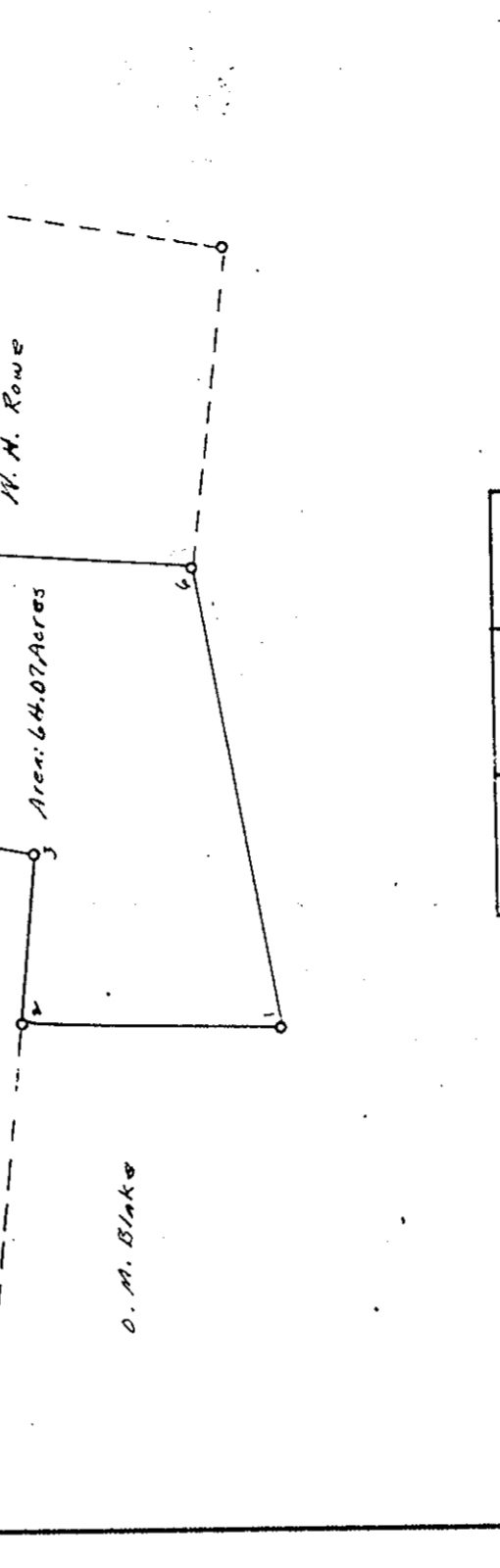


Plot	Angle	Plot	Angle
H	360° 00'	D	360° 00'
B	88° 00'	H	228° 54'
1	228° 54'	G	224° 20'
2	88° 24'	1	226° 46'
3	87° 34'	2	250° 26'
12	221° 18'	3	315° 47'
13	343° 13'	12	7° 12'
14	25° 04'	13	93° 27'
15	58° 44'	14	177° 01'
16	158° 07'	15	146° 33'
		16	248° 40'

Sub October 29, 1954
M.D. Beyond Club

Plat Book No. 5 Page 177

OYSTER PLANTING GROUND
 OF
 Robert H. & Eleanor Maxwell
 IN
 Cheasemans Creek
 District No. 15 York COUNTY
 Scale 3000 April 17 1952
 Surveyed by J. H. Sweeney
 K-45, 445 CERTIFIED SURVEYOR



Plot	Angle	Plot	Angle
Page 111	360° 00'	123° 01'	
1	360° 00'		
2	322° 20'	57° 02'	
3	320° 05'	42° 03'	
4	326° 28'	67° 08'	
5	325° 45'	70° 06'	
6	333° 55'	78° 49'	
7	338° 14'	35° 12'	
8	690° 30'	Castage City Bank	
9	59° 22'	Geo. Lawson Msev.	
10	117° 01'	Assoc. on Blumber Pl.	
11	212° 31'	± 10'	

Sub October 29, 1954
M.D. Beyond Club

Plat Book No. 5 Page 177

OYSTER PLANTING GROUND
 OF
 O. M. Blake
 IN
 Mouth of Kings and Felgate's Crs. on York River
 District No. 15 York COUNTY
 Scale 1:1000 July 22 1952
 Surveyed by Charles J. Keenan
 K-45, 2 CERTIFIED SURVEYOR