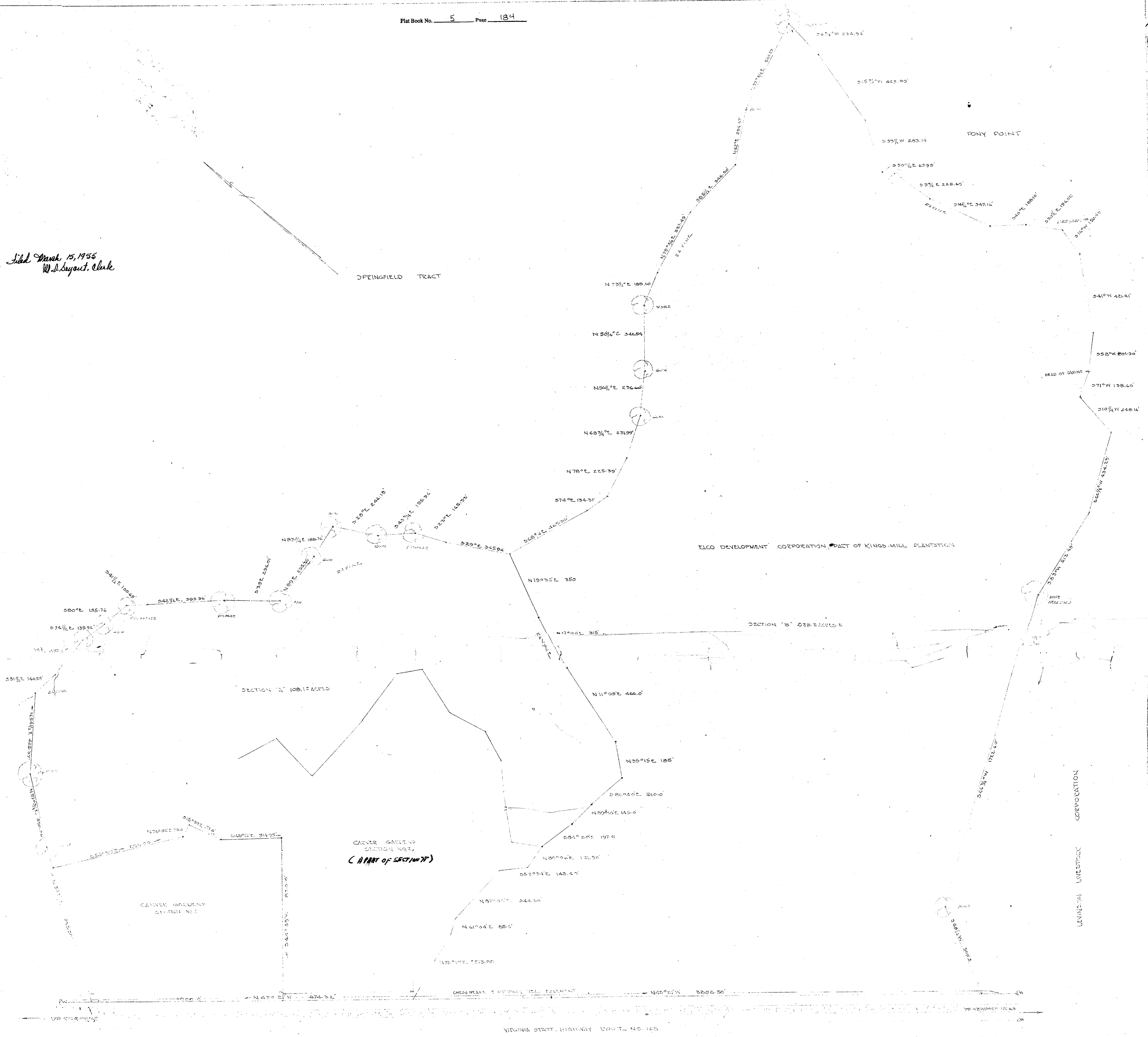


Filed March 15, 1956
W.D. Bryant, Clerk



NOTE: THIS IS A COMPILED PLAT TO BE USED FOR GENERAL DEED PURPOSES ONLY AND IS NOT SUITABLE FOR RECORDATION.

BEARINGS ARE AS SHOWN BY THESE ONLY DISTANCES HAVE BEEN COMPUTED FROM BEARINGS TO POINTS THEREON THESE BEARINGS WERE OBTAINED BY THE SURVEY LINE WHICH IS BASED ON THE MERIDIAN

ELCO DEVELOPMENT CORPORATION
YORK COUNTY VIRGINIA
PART OF KINGS MILL PLANTATION
AS SHOWN FROM SURVEY DATA
MARCH 15, 1956