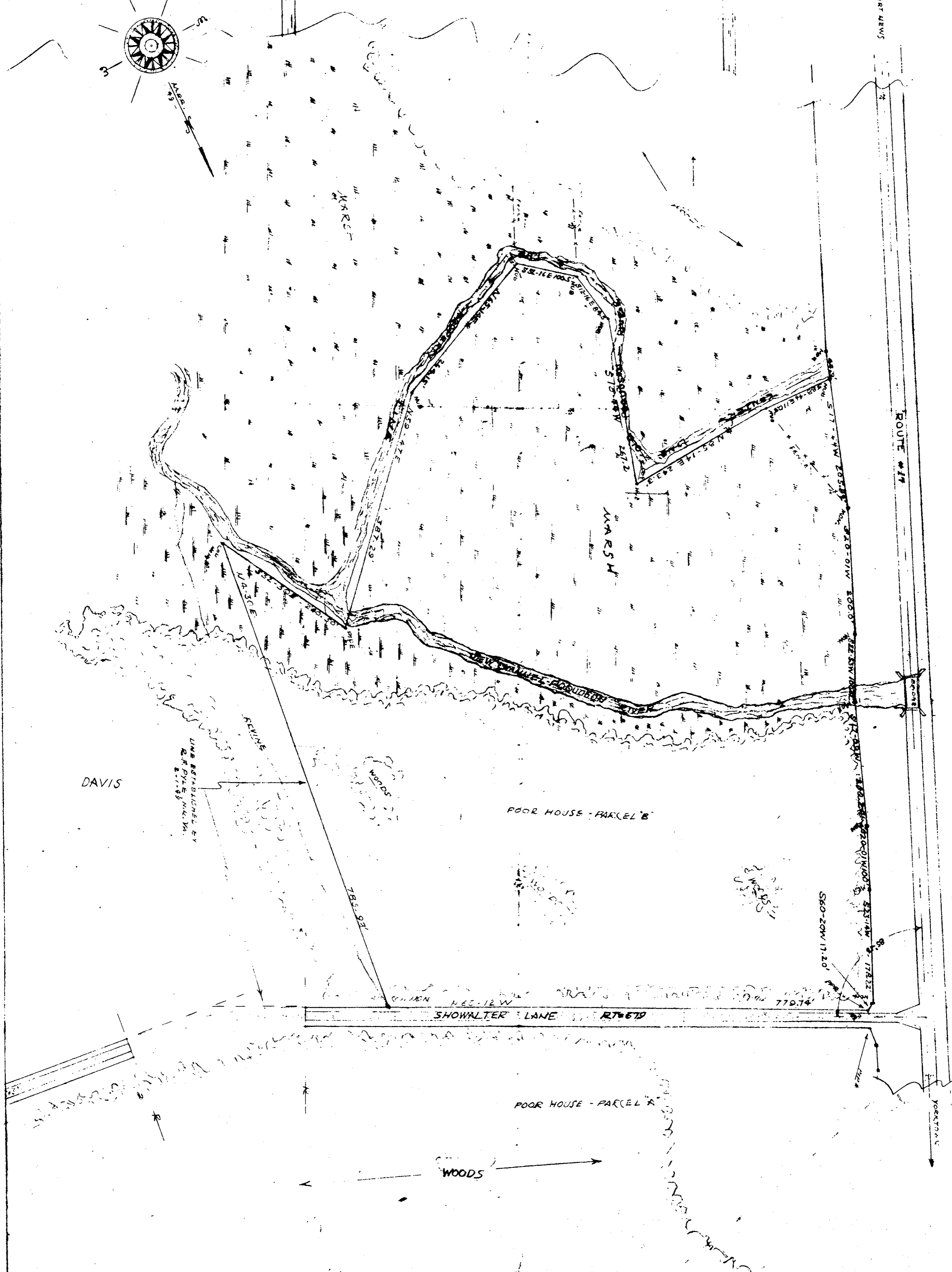
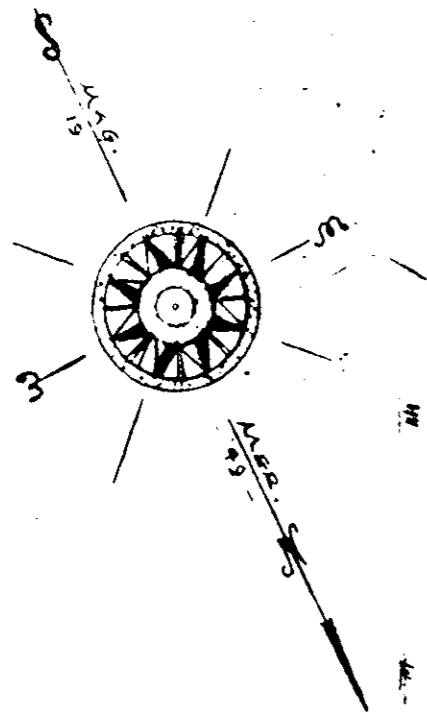


THE YORK CO. POOR HOUSE FARM - PARCEL B

Surveyed By Glass & Glass Engineering Company
Richmond VIRGINIA Hampton
Grafton District York County, Virginia
SCALE 1" = 100' MARCH 9, 1953

Containing 19.46[±] Acres in Traverse

S. J. Glass
CERTIFIED LAND SURVEYOR & CIVIL ENGINEER
S. J. Glass



DB. 100 - 351

Recorded June 28, 1955
W. M. Bryant, Clerk