

State of Virginia
County of York

In the Clerk's Office of the Circuit Court for the County of York, Virginia, this map was presented and admitted to record as the law directs this 15th day of August 1984 in Plat 1358 Page 30

Teste E. E. Paine Clerk

To the best of my knowledge and belief all of the requirements as set forth in the ordinance for approving plats of subdivisions in the County of York, Virginia, have been complied with, including a closure of not less than 1/10,000, and this plat and survey are correct. I certify that monuments as shown on this plat will be set on or before 8-31-84.

This is to certify that the land embraced in this subdivision is in the name of Leslie R. O'Hara Estate by will from Leslie R. O'Hara dated May 4, 1982 and recorded in Will Book 47 Page 508 in the Clerk's Office of the Circuit Court of the County of York, Va.

E. E. Paine
E. E. Paine, P.E.

This plat of subdivision is with the free consent and in accordance with the desires of the undersigned owners, proprietors, and trustees, if any.

Leslie R. O'Hara, Deceased
Lucy A. O'Hara, Co-Executor & Co-Trustee
James M. O'Hara, Co-Executor & Co-Trustee
Philip B. Magruder, Jr., Vice-President-Trust
United Virginia Bank, Co-Executor & Co-Trustee

State of Virginia
County of York

I, Anna M. Hamm, a Notary Public in and for the County and State aforesaid, do hereby certify that the above persons whose names are signed to the foregoing writing have acknowledged the same before me in my County and State aforesaid.

Given under my hand this 15th day of August 1984.

Notary Public Anna M. Hamm
My Commission expires January 22, 1988

YORK COUNTY, VIRGINIA
APPROVED
YORK COUNTY BOARD OF SUPERVISORS
BY [Signature]
PLAT APPROVING AGENT
DATE August 15, 1984

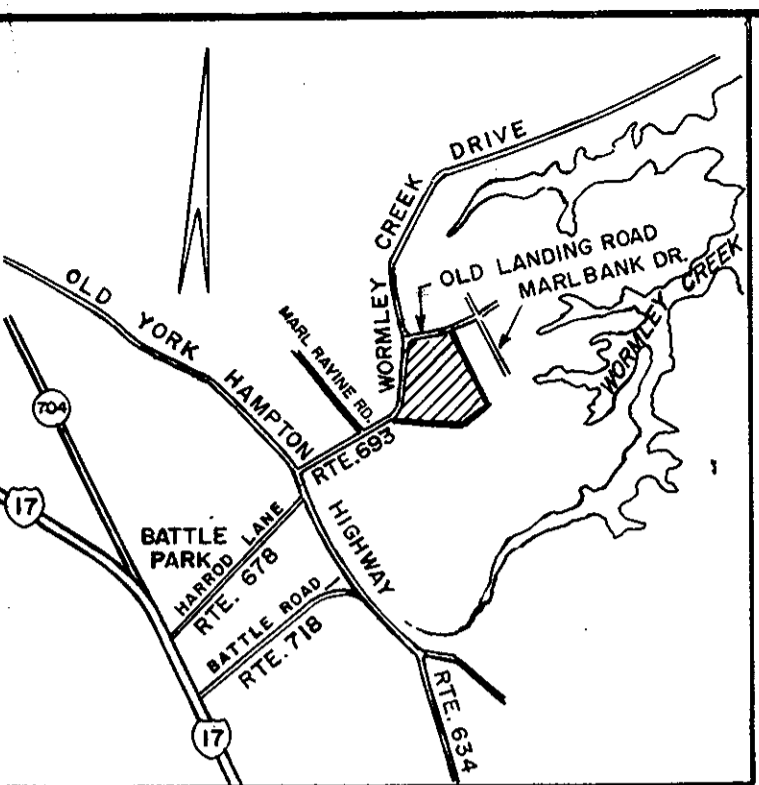
SUBDIVISION OF A PORTION OF THE

LESLIE R. O'HARA ESTATE
YORK COUNTY, VIRGINIA

SHEET 1 OF 1

E. E. PAINE, INC.
ENGINEERING & PLANNING
NEWPORT NEWS, VIRGINIA
JOB No. 2064

SCALE 1" = 100' DATE: AUGUST 13, 1984

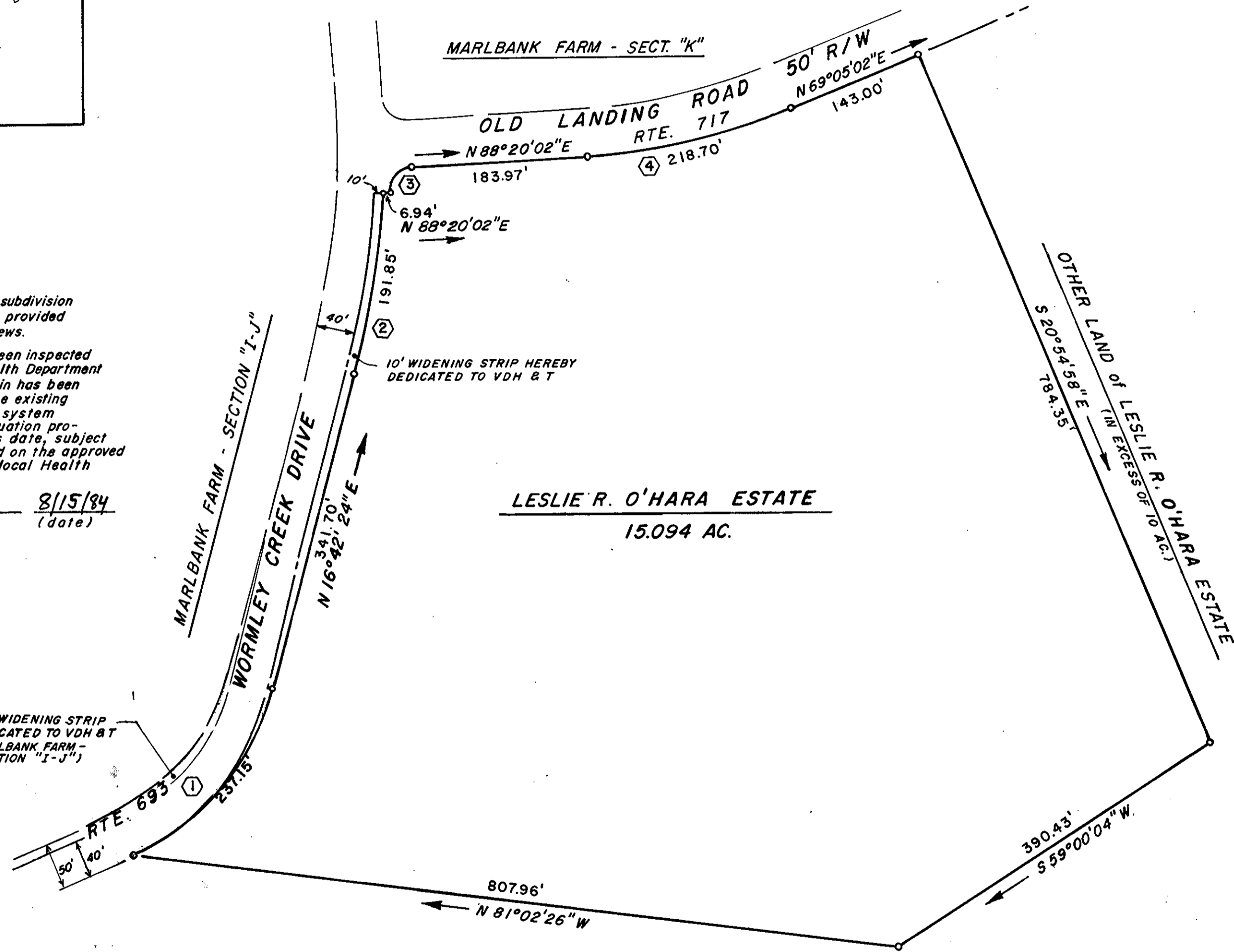


VICINITY MAP
1" = 2000'

UTILITIES:

Water - The property within this subdivision is served by PUBLIC WATER provided by the City of Newport News.
Sewer - This subdivision has been inspected by an agent of the local Health Department and the lot contained therein has been determined acceptable for the existing individual sewage disposal system under the subdivision evaluation procedures in effect as of this date, subject to the conditions indicated on the approved copy of plat filed at the local Health Department.

David A. Richwine 8/15/84
(signed) (date)



LESLIE R. O'HARA ESTATE
15.094 AC.

OTHER LAND of LESLIE R. O'HARA ESTATE
(IN EXCESS OF 10 ACRES)

CURVE DATA

NO.	DELTA	RADIUS	ARC	TANGENT	CHORD	CH. BEARING
1	52°25'00"	259.22	237.15'	127.60'	228.96'	N 42°54'54" E
2	11°27'01"	960.00	191.85'	96.25'	191.53'	N 10°58'54" E
3	90°00'00"	25.00'	39.27'	25.00'	35.36'	N 43°20'02" E
4	19°15'00"	650.95'	218.70'	110.39'	217.68'	N 78°42'32" E

