



FILE T-234

COMM 84-53

DATE 2-8-85

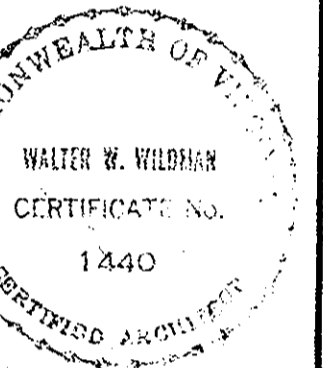
DRAWN JSC

RANCORN WILDMAN KRAUSE
AIA

ARCHITECTS
PLANNERS

166 CARDINAL LAKE
YORK COUNTY VA
PO BOX NO 1817
NEWPORT NEWS VA

804-867-8030



WALL
SECTIONS

FAIRFIELD WILLIAMSBURG
YORK COUNTY, VIRGINIA

DETAIL NO.

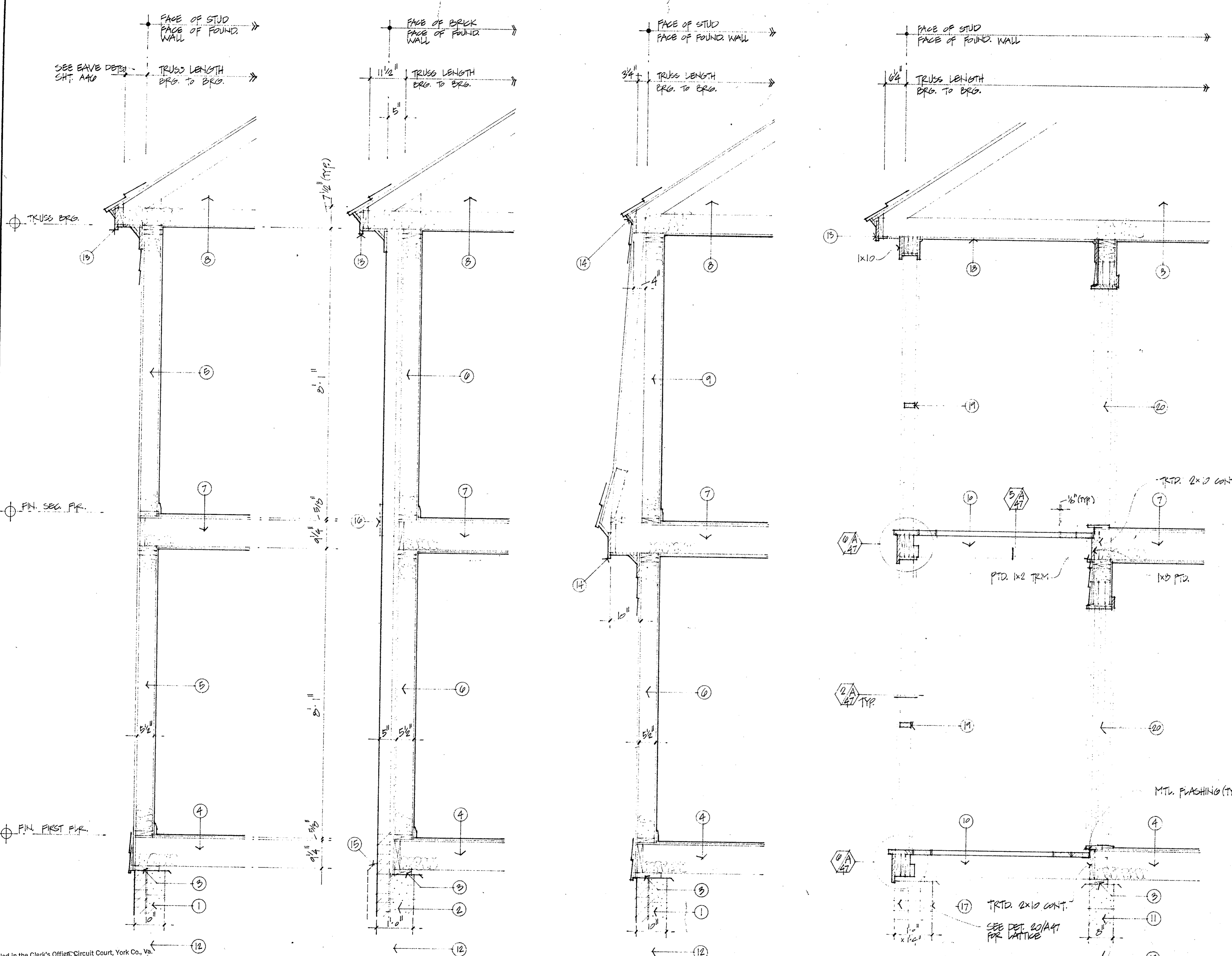
SHEET NO.

A-37

SHEET 25
OF 67

WALL SECTION NOTES (SHEET A-37)

- ① 6" block, 4" brick
- ② 8" block, 4" brick
- ③ Sill sealer, termite shield and treated wood plate with anchor bolts see structural drawings.
- ④ First floor structure: 2 x 10's at 16" o/c, 5/8" plywood subfloor, 5/8" plywood underlayment, R-11 insulation.
- ⑤ Exterior wall (siding): 2 x 6's at 24" o/c, 1/2" sheathing, 15 lb. felt, beaded siding, R-19 insulation, poly vapor barrier, 1/2" gypsum board.
- ⑥ Exterior wall (brick): 2 x 6's at 24" o/c, 1/2" sheathing, 15 lb. felt, brick veneer, R-19 insulation, poly vapor barrier, 1/2" gypsum board.
- ⑦ Second floor structure: 1 Hour Floor/Ceiling Assembly (UL L514): 2 x 10's at 16" o/c, 5/8" plywood subfloor, 3/4" gyprocrete, 2-1/2" sound insulation, resilient channels, 1/2" type "X" gypsum board ceiling.
- ⑧ Roof: Wood trusses, 1/2" plywood sheathing, 15 lb. felt, wood shingles, R-30 insulation, 1/2" gypsum board.
- ⑨ Exterior wall (mansard): 2 x 6's at 24" o/c, 2 x 4's at 24" o/c, 1/2" sheathing, 15 lb. felt, shingles, R-19 insulation, poly vapor barrier, 1/2" gypsum board.
- ⑩ Deck: Treated 2 x 8's at 16" o/c, treated 2 x 6 decking.
- ⑪ 8" block
- ⑫ See structural drawings for foundations.
- ⑬ See roof plans and sheet A-46 for eave details.
- ⑭ See detail 5, Sheet A-46.
- ⑮ See elevations for location of watertable brick.
- ⑯ See elevations for location of projected brick.
- ⑰ Brick pier, see structural drawings.
- ⑱ 1/2" exterior gypsum board ceiling with 1 x 8 and 1/2" quarter round trim continuous.
- ⑲ Railings, see elevations and details, sheet A-40.
- ⑳ See sliding glass door details, sheet A-43.



Filed in the Clerk's Office, Circuit Court, York Co., Va.
the 24th day of June 1985

Teste:
Edith M. Elliott, Clerk
P.B. #10 p. 126

1 A 37 SIDING
3/4" = 1'-0"

2 A 37 BRICK
3/4" = 1'-0"

3 A 37 MANSARD
3/4" = 1'-0"

4 A 37 DECKS
3/4" = 1'-0"

Exhibit D₂ to Project and Time-Share Instrument For Fairfield Williamsburg

Exhibit D₂ to Project and Time-Share Instrument For Fairfield Williamsburg

Filed in the Clerk's Office, Circuit Court, York Co., Va.
the 24th day of June 1985

Teste:
Edith M. Elliott, Clerk
P.B. #10 p. 127