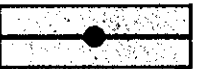


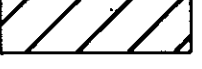


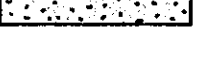
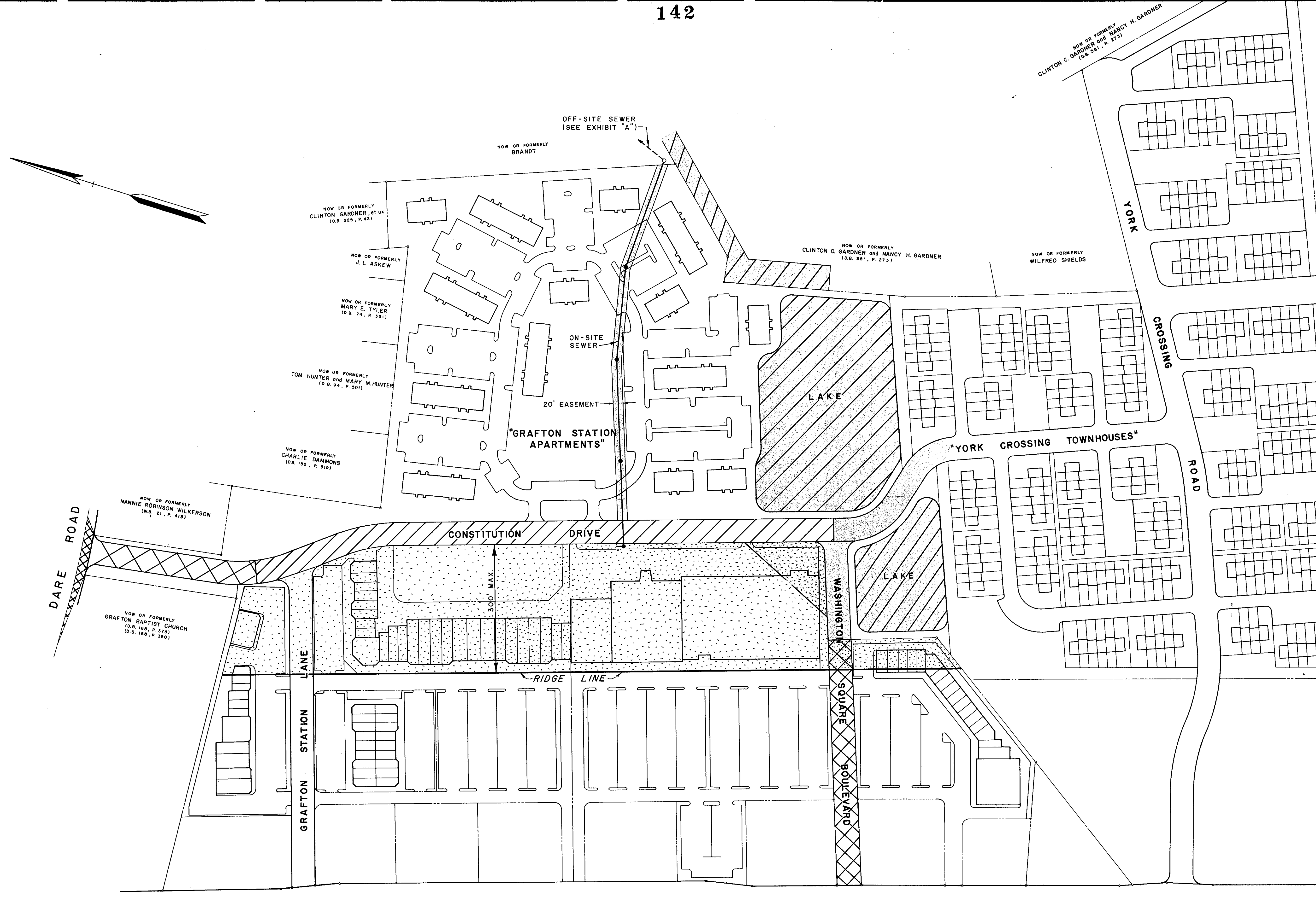


KEY

-  DENOTES ON-SITE SEWER AND DEDICATED EASEMENT (100% PARTICIPATION BY ASHE/RIPLEY)
-  DENOTES STREET IMPROVEMENTS (100% PARTICIPATION BY ASHE/RIPLEY)
-  DENOTES DRAINAGE SYSTEM (100% PARTICIPATION BY ASHE/RIPLEY) (\$29,500 BY GRAFTON II, COST OF CONSTRUCTION AND MAINTENANCE.)
-  DENOTES STREET IMPROVEMENTS (65% PARTICIPATION BY ASHE/RIPLEY, 35% PARTICIPATION BY GRAFTON II)
-  DENOTES STREET IMPROVEMENTS (100% PARTICIPATION BY GRAFTON II)
-  DENOTES MAXIMUM DRAINAGE AREA ALLOTTED GRAFTON II.
-  DENOTES LAND TO BE DEEDED TO GRAFTON II BY ASHE/RIPLEY AND YORK INVESTORS, INC.



NOW OR FORMERLY
 CLINTON C. GARDNER and NANCY H. GARDNER
 (D.B. 581, P. 273)

[Handwritten signature]

Plat Book No. 10 Page 142
 Deed Book 421 Page 159

Filed in the Clerk's Office, Circuit Court, York Co., Va.
 the 31st day of July 1988

Teste:
 Edith M. Elliott, Clerk
[Signature] D.C.

Plat Book No. 10 Page 141
 Deed Book 421 Page 159

Filed in the Clerk's Office, Circuit Court, York Co., Va.
 the 31st day of July 1988

Teste:
 Edith M. Elliott, Clerk
[Signature] D.C.

EXHIBIT "B"

**YORK CROSSING TOWNHOUSES,
 GRAFTON STATION APARTMENTS &
 WASHINGTON SQUARE SHOPPING CENTER
 GRAFTON DISTRICT YORK COUNTY, VIRGINIA**

JOHN E. SIRINE AND ASSOCIATES, LTD.
 SURVEYORS - ENGINEERS - PLANNERS
 VIRGINIA BEACH, VIRGINIA

DESIGN: J.R.H.	SCALE: 1" = 100'	REF. BOOK: PS 242, P. 1- F.B. 173, P. 6 & 7	DATE: MAY 29, 1985	JOB NO.: 25,381 25,399	SHEET NO.: 1 OF 1
----------------	------------------	--	--------------------	---------------------------	-------------------