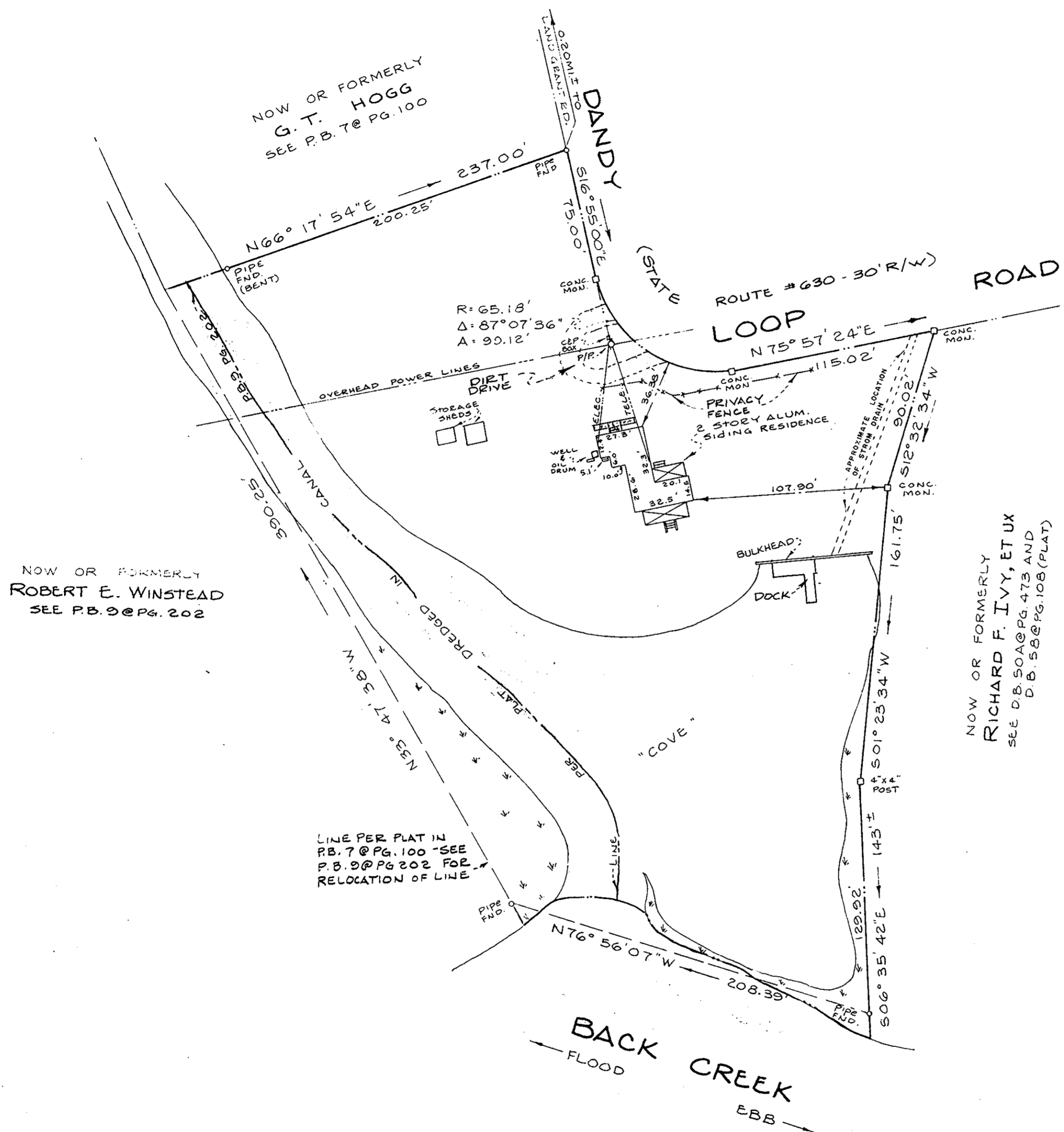


MERIDIAN PER PLAT BOOK 7 PG. 100



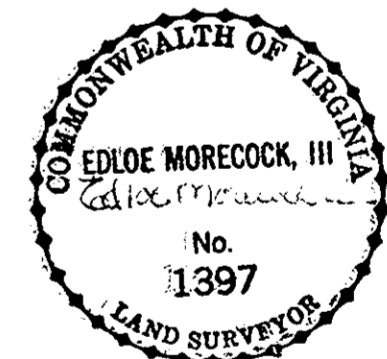
NOW OR FORMERLY
G. T. HOGG
SEE P.B. 7 @ PG. 100

NOW OR FORMERLY
ROBERT E. WINSTEAD
SEE P.B. 9 @ PG. 202

NOW OR FORMERLY
RICHARD F. IVY, ET UX
SEE D.B. 50 @ PG. 473 AND
D.B. 58 @ PG. 108 (PLAT)

LINE PER PLAT IN
P.B. 7 @ PG. 100 - SEE
P.B. 9 @ PG. 202 FOR
RELOCATION OF LINE

- REFERENCES:
- W.B. 5 PG. 845
 - C.B. 179 PG. 277 & 289
 - P.B. 7 PG. 00
 - D.B. 296 PG. 751
 - P.B. 9 PG. 202
 - P.B. 9 PG. 128



SUBJECT TO EASEMENTS, RIGHT OF WAYS, AND COVENANTS OF RECORD.

AREA OF HIGHLAND 1.38 AC. ±
 AREA OF COVE & CANAL 0.72 AC. ±
 TOTAL AREA 2.1 AC. ±

Plat Book No. 10 Page 146

Filed in the Clerk's Office, Circuit Court, York Co., Va
the 7th day of August 1985

Tests:
 Edith M. Elliott, Clerk
[Signature] D.C.
 11:00 AM

PLAT SHOWING THE PROPERTY OF		BARBARA H. BYRD	
NELSON DISTRICT, YORK COUNTY, VIRGINIA		APPROVED BY:	
SCALE: 1" = 50'	DATE: 5-20-85	DRAWN BY:	REVISED:
MORECOCK & RUTH, INC. LAND SURVEYORS & LAND PLANNERS YORK COUNTY, VIRGINIA			
REVISED 7-25-85			DRAWING NUMBER: