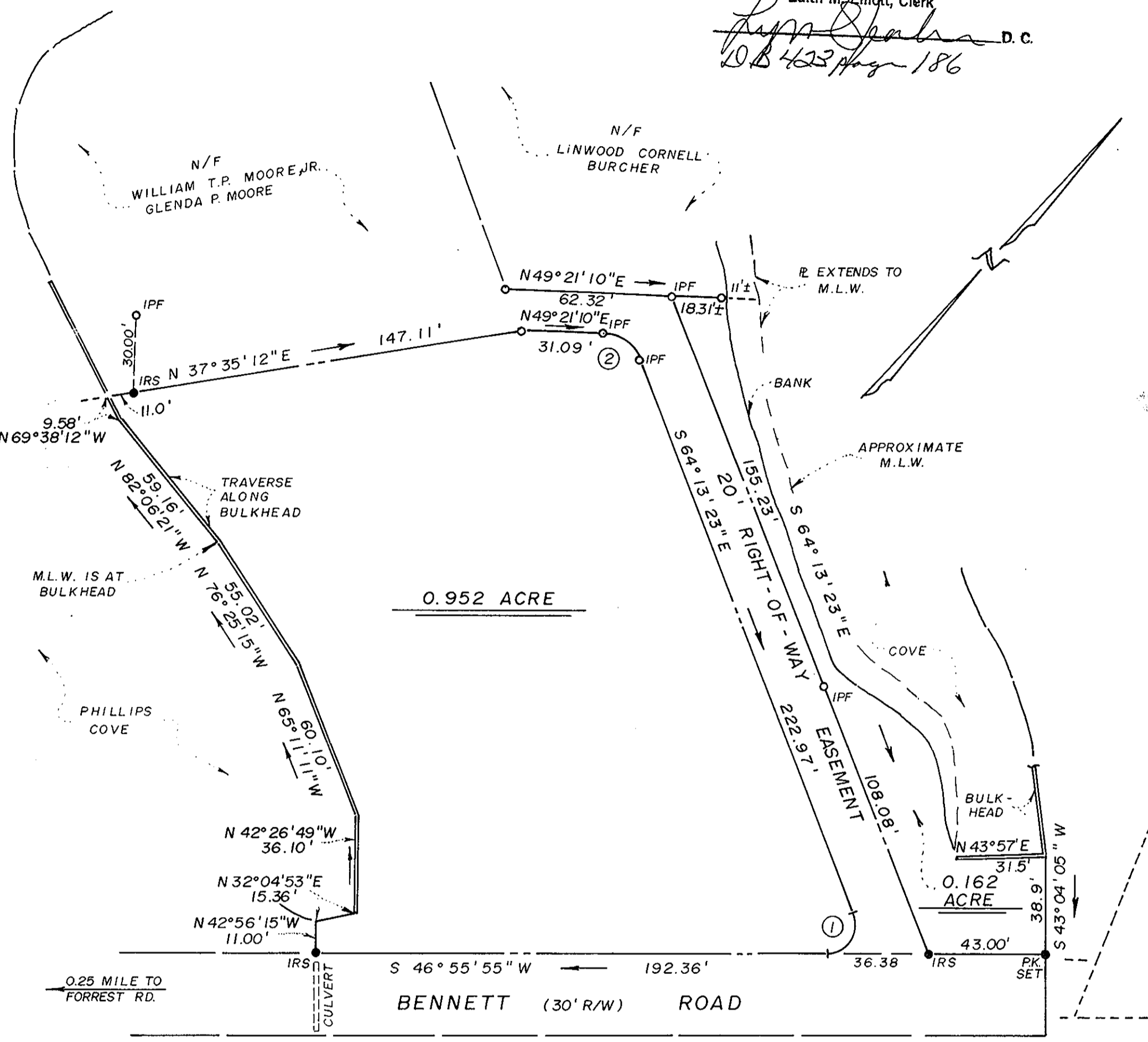


Plat Book No. 10 Page 154

Filed in the Clerk's Office, Circuit Court, York Co., Va.  
the 29th day of August 1985

Teste: 4:07 P.M.  
Edith M. Elliott, Clerk  
[Signature] D.C.  
DB 423 Page 186



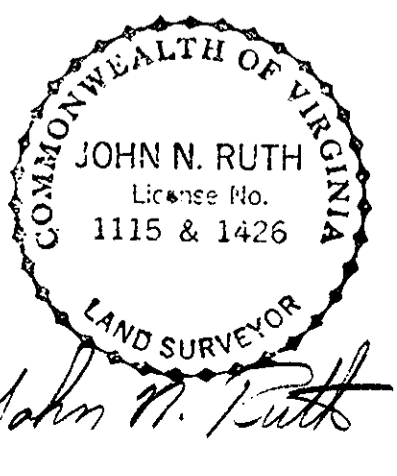
CURVE DATA:  
 ① Δ = 111° 09' 18"  
 R = 10.28'  
 T = 15.00'  
 L = 19.94'  
 CH = 16.96'  
 ② Δ = 66° 25' 27"  
 R = 15.19'  
 T = 9.94'  
 L = 17.61'  
 CH = 16.64'

PROPERTY REFERENCES:  
 TAX MAP 20, PARCEL 149D  
 W.B. 48 @ PG. 497  
 P.B. 8 @ PG. 162  
 D.B. 219 @ PG. 112

NOTE: THIS PLAT IS SUBJECT TO EASEMENTS, RESTRICTIONS, RIGHTS-OF-WAY & CONVENANTS OF RECORD.  
 AREA SHOWN EXCLUDES 20' R/W.  
 AREA = 0.952 ACRE  
 + 0.162 ACRE  
 1.114 ACRE = TOTAL AREA

PLAT SHOWING THE PROPERTY OF  
 GLENDA P. MOORE  
 LOCATED ON BENNETT ROAD  
 POQUOSON, VIRGINIA  
 SCALE: 1" = 40' DATE: 7-5-85

MORECOCK & RUTH, INC.  
 LAND SURVEYORS & LAND PLANNERS  
 GRAFTON, VIRGINIA



CITY OF POQUOSON  
 CITY OF POQUOSON  
 APPROVED  
 DATE 8/22/85  
[Signature]  
 CITY MANAGER