



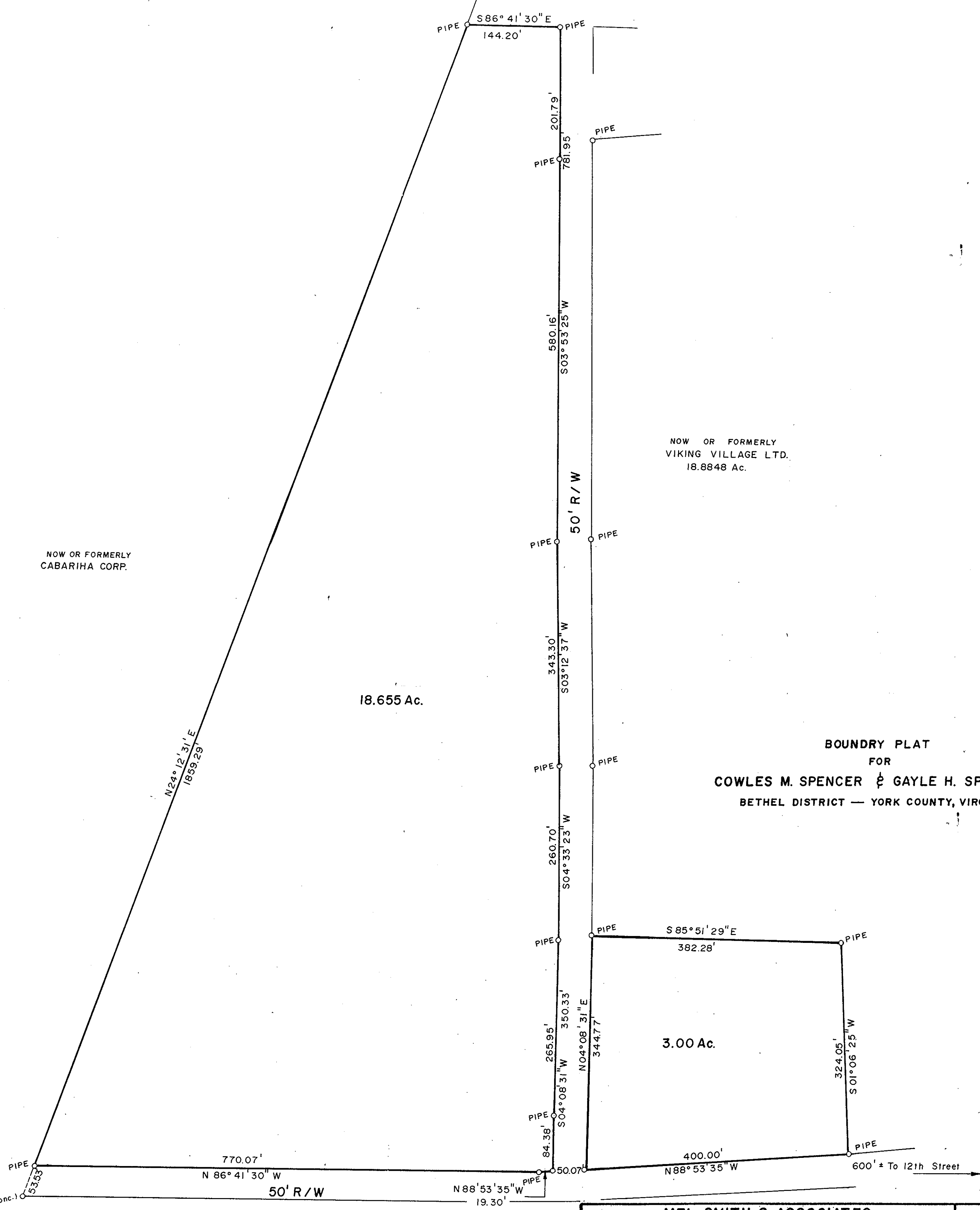
NOW OR FORMERLY CABARIHA CORP.

18.655 Ac.

NOW OR FORMERLY VIKING VILLAGE LTD. 18.8848 Ac.

BOUNDRY PLAT FOR COWLES M. SPENCER & GAYLE H. SPENCER BETHEL DISTRICT — YORK COUNTY, VIRGINIA

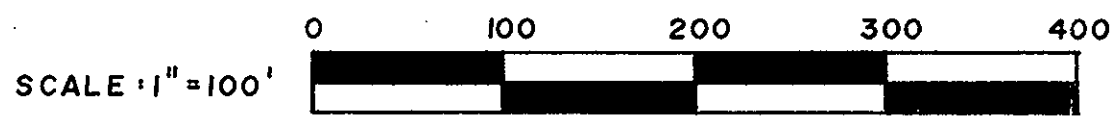
3.00 Ac.



Plat Book No. 10 Page 201 PIN (F in Conc.) 201-A

Filed in the Clerk's Office, Circuit Court, York Co., Va. the 16th day of January 1986 4:50 P.M.

Teste: Edith M. Elliott, Clerk [Signature] D.C.



MEL SMITH & ASSOCIATES CONSULTING ENGINEERS, SURVEYORS, PLANNING 2402 PRINCESS ANNE ROAD VIRGINIA BEACH, VIRGINIA 23456 PHONE: (804) 427-1768

DWN. DW	SCALE: 1"=100'	PROJ. NO. 85-100
DATE: 12-17-85	F.B. 4, P. 73	DWG. NO.

