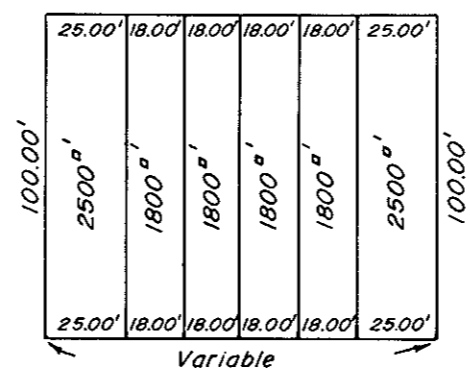


VICINITY MAP
SCALE 1" = 2,000'

THE PROPERTY SHOWN ON THIS PLAT IS SUBJECT TO THE PROVISIONS OF THAT CERTAIN DECLARATION OF COVENANTS, CONDITIONS AND RESTRICTIONS DATED SEPTEMBER 21, 1985 RECORDED IN THE CLERK'S OFFICE OF THE CIRCUIT COURT FOR THE COUNTY OF YORK, VIRGINIA AT DEED BOOK 431, PAGE 780. ATLANTIC HOMES DEVELOPMENT CORPORATION IN RECORDING THIS PLAT OF SUBDIVISION OF MEADOWLAKE FARMS SECTION TWO HAS DESIGNATED CERTAIN AREAS IN SAID DECLARATION AS "CLUSTER COMMON AREA" INTENDED FOR USE BY OWNERS IN MEADOWLAKE FARMS SECTION TWO FOR USES AS SET FORTH IN SAID DECLARATION OF COVENANTS, RESTRICTIONS AND CONDITIONS. THE SAID CLUSTER COMMON AREAS ARE NOT HEREBY DESIGNATED FOR USE TO THE GENERAL PUBLIC, BUT FOR THE COMMON USE AND ENJOYMENT OF THE HOMEOWNERS OF MEADOWLAKE FARMS SECTION TWO, AS MORE FULLY PROVIDED IN SAID RESTRICTIONS.



TYPICAL BLOCK
(SCALE 1" = 60')

Now or Formerly
HATCHELL'S, INC.

MEADOWLAKE FARMS

SECTION TWO

COUNTY OF YORK

VIRGINIA

COENEN & ASSOCIATES, INC.
ENGINEERS — PLANNERS — SURVEYORS
696 J. CLYDE MORRIS BLVD. — NEWPORT NEWS, VA.
SCALE: 1" = 100' DATE: FEB. 18, 1986

THE PLATTING OF THE LAND HEREON SHOWN IS WITH THE FREE CONSENT AND IN ACCORDANCE WITH THE DESIRE OF THE UNDERSIGNED OWNERS, PROPRIETORS, AND TRUSTEES, IF ANY.
ATLANTIC HOMES DEVELOPMENT CORPORATION
KENNETH L. ALLEN, PRES. SVEIN J. LASSEN, SECRETARY

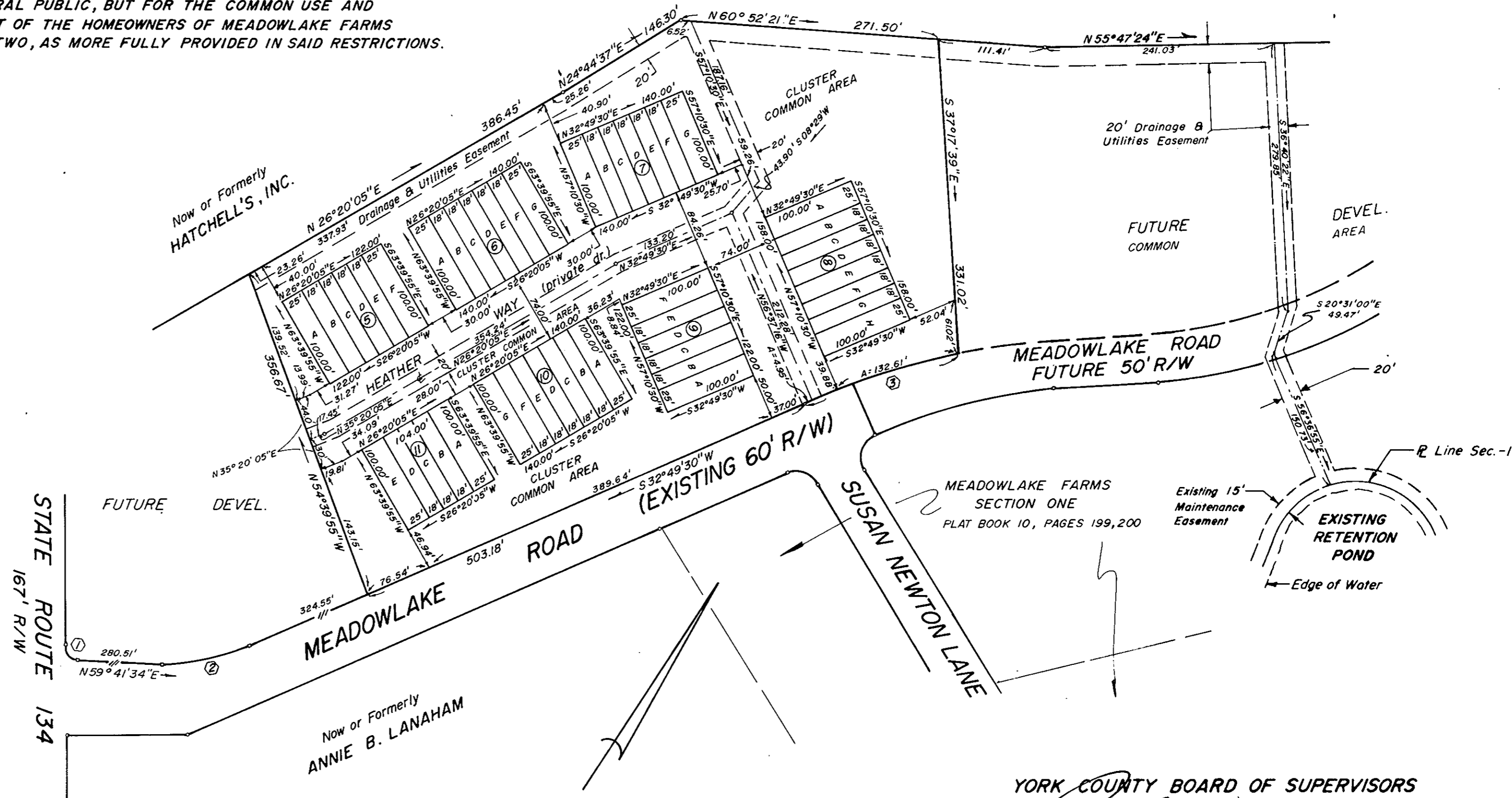
I, James K. Barber, A NOTARY PUBLIC IN AND FOR THE City of Newport News, DO HEREBY CERTIFY THAT THE ABOVE NAMED PERSONS WHOSE NAMES ARE SIGNED TO THE FOREGOING WRITING HAVE ACKNOWLEDGED THE SAME BEFORE ME IN MY City AND STATE AFORESAID. GIVEN UNDER MY HAND THIS 25th DAY OF MARCH, 1986

James K. Barber
NOTARY PUBLIC

MY COMMISSION EXPIRES July 25, 1996

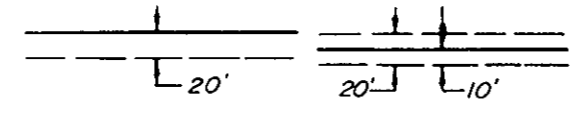
TO THE BEST OF MY KNOWLEDGE AND BELIEF, ALL THE REQUIREMENTS AS SET FORTH IN THE ORDINANCE FOR APPROVING PLATS OF SUBDIVISION IN THE COUNTY OF YORK, VIRGINIA, HAVE BEEN COMPLIED WITH INCLUDING A CLOSURE OF NOT LESS THAN 1/10,000.

THIS IS TO CERTIFY THAT THE LAND EMBRACED IN THIS SUBDIVISION IS IN THE NAME OF ATLANTIC HOMES DEVELOPMENT CORPORATION, A VIRGINIA CORPORATION AND WAS ACQUIRED FROM BANK OF VIRGINIA TRUST COMPANY, TRUSTEE, BY DEED DATED AUGUST 23, 1983 AND DULY RECORDED IN THE CLERK'S OFFICE OF THE CIRCUIT COURT OF THE COUNTY OF YORK, VIRGINIA, IN DEED BOOK 383, PAGE 692. I CERTIFY THAT MONUMENTS AS SHOWN ON THIS PLAT WILL BE SET ON OR BEFORE FEBRUARY 18, 1987.



CLUSTER COMMON AREA	4.2671 Acres
AREA WITHIN LOTS	2.1258 Acres
AREA WITHIN R/W	0.00
TOTAL SUBDIVIDED AREA	6.3929 Acres

EASEMENTS SHOWN THUS ARE HEREBY CONVEYED TO THE COUNTY OF YORK FOR DRAINAGE & OTHER UTILITIES.



No.	DELTA	RADIUS	TANGENT	ARC	CHORD	CH. BEARING
1	87°06'07"	25.00'	23.77'	38.01'	34.45'	N 76°45'22"W
2	26°52'04"	550.00'	131.37'	257.91'	255.56'	S 46°15'32"W
3	12°27'53"	779.72'	85.15'	169.63'	169.30'	S 39°03'29"W

Donald R. Kohlman
DONALD R. KOHLMAN
CERTIFIED LAND SURVEYOR



EACH LOT WITHIN THIS SUBDIVISION IS SERVED BY PUBLIC SEWER PROVIDED BY THE COUNTY OF YORK, VIRGINIA.

EACH LOT WITHIN THIS SUBDIVISION IS SERVED BY PUBLIC WATER PROVIDED BY THE CITY OF NEWPORT NEWS.

YORK COUNTY BOARD OF SUPERVISORS
BY Richard
PLAT APPROVING AGENT
DATE April 8, 1986

Plat Book No. 10 Page 227

STATE OF VIRGINIA
COUNTY OF YORK
IN THE CLERK'S OFFICE OF THE CIRCUIT COURT FOR THE COUNTY OF YORK THE 10th DAY OF April, 1986
THIS MAP WAS PRESENTED AND ADMITTED TO RECORD AS THE LAW DIRECTS, PLAT BOOK 10, PAGE 227

3:35 P.M. EDITH M. ELLIOTT, CLERK

TESTE by Lynn Jenkins
CLERK