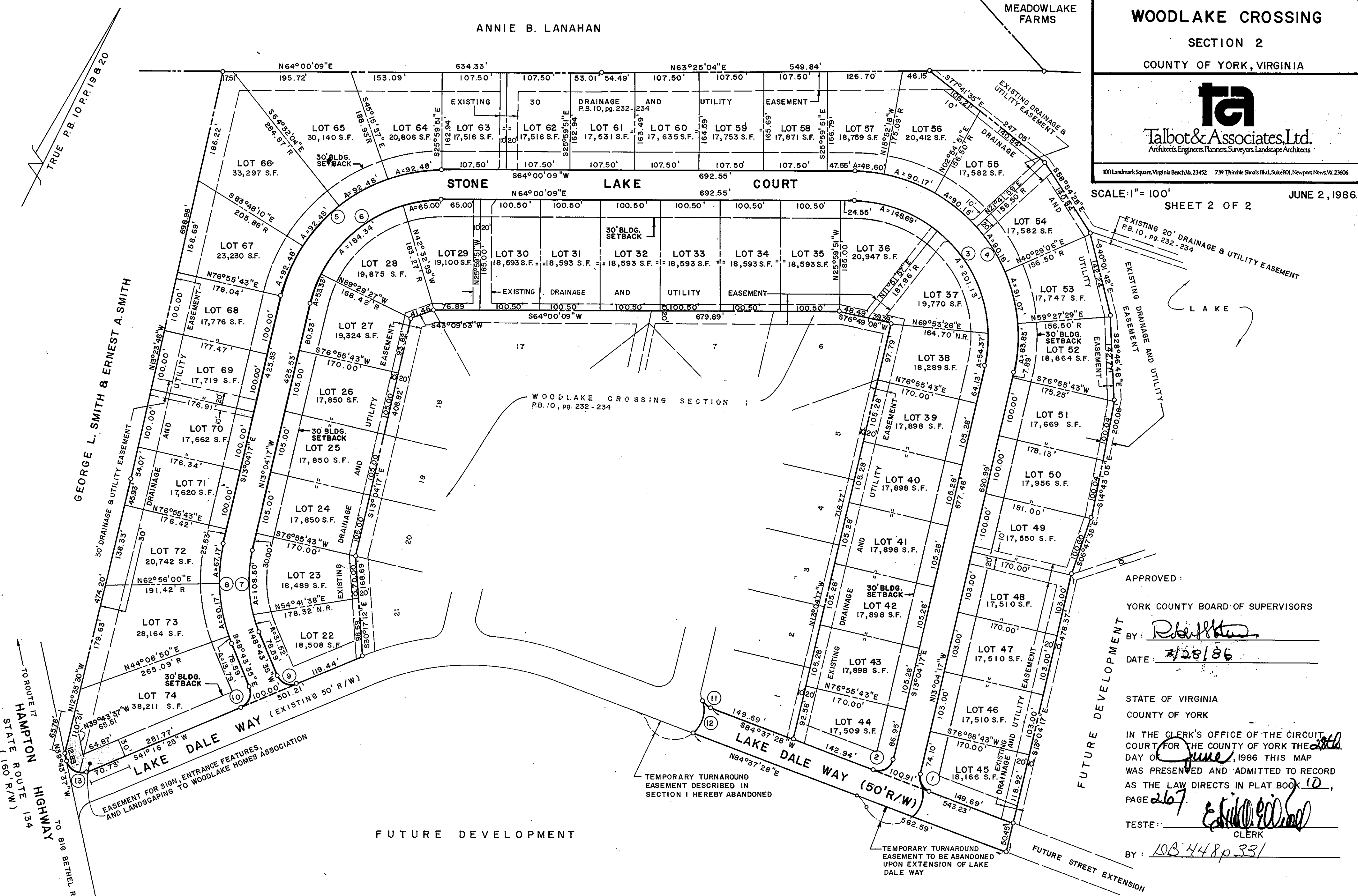


SUBDIVISION  
OF  
**WOODLAKE CROSSING**  
SECTION 2  
COUNTY OF YORK, VIRGINIA



100 Landmark Square, Virginia Beach, Va. 23452 739 Thinkle Shoals Blvd., Suite 801, Newport News, Va. 23606

SCALE: 1" = 100' SHEET 2 OF 2 JUNE 2, 1986



APPROVED:  
YORK COUNTY BOARD OF SUPERVISORS

BY: *[Signature]*  
DATE: 7/28/86

STATE OF VIRGINIA  
COUNTY OF YORK  
IN THE CLERK'S OFFICE OF THE CIRCUIT COURT FOR THE COUNTY OF YORK THE 28th DAY OF June, 1986 THIS MAP WAS PRESENTED AND ADMITTED TO RECORD AS THE LAW DIRECTS IN PLAT BOOK 10, PAGE 267

TESTE: *[Signature]* CLERK  
BY: 10B 448p 331

TO ROUTE 17  
HAMPTON HIGHWAY  
STATE ROUTE 134  
(160' R/W)  
TO BIG BETHEL ROAD

FUTURE DEVELOPMENT

FUTURE STREET EXTENSION