

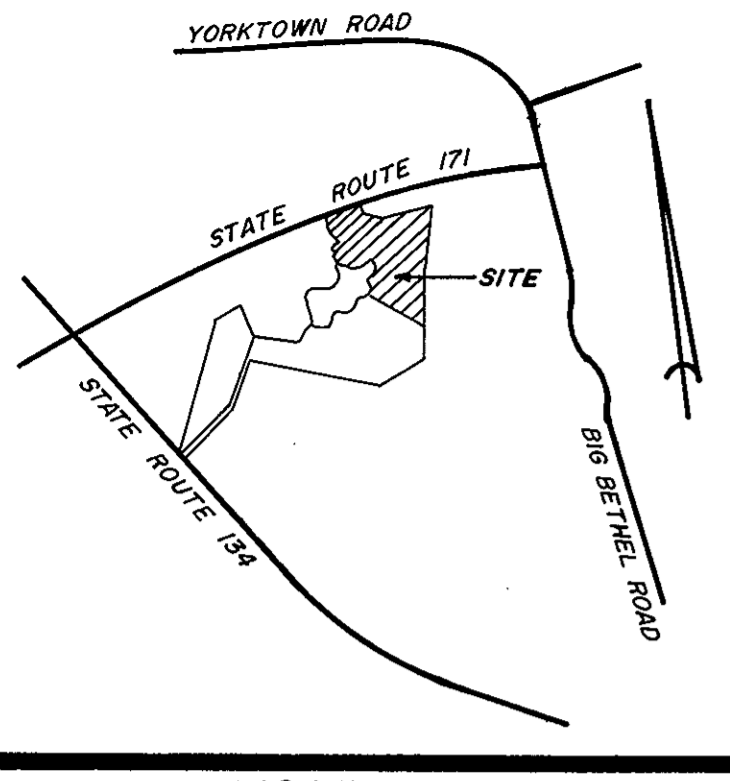
# MEADOWLAKE FARMS

## SECTION FOUR

### COUNTY OF YORK VIRGINIA

**COENEN & ASSOCIATES, INC.**  
ENGINEERS — PLANNERS — SURVEYORS  
696 J. CLYDE MORRIS BLVD. — NEWPORT NEWS, VA.  
SCALE: 1" = 100' DATE: JULY 5, 1986

THE PROPERTY SHOWN ON THIS PLAT IS SUBJECT TO THE PROVISIONS OF THAT CERTAIN DECLARATION OF COVENANTS, CONDITIONS AND RESTRICTIONS DATED, SEPTEMBER 21, 1985 RECORDED IN THE CLERK'S OFFICE OF THE CIRCUIT COURT FOR THE COUNTY OF YORK, VIRGINIA, IN DEED BOOK 431 PAGE 780. ATLANTIC HOMES DEVELOPMENT CORPORATION IN RECORDING THIS PLAT OF SUBDIVISION OF MEADOWLAKE FARMS SECTION FOUR HAS DESIGNATED CERTAIN AREAS IN SAID DECLARATION AS "COMMON AREA" INTENDED FOR USE BY OWNERS IN MEADOWLAKE FARMS SECTION FOUR FOR USES AS SET FORTH IN SAID DECLARATION OF COVENANTS, RESTRICTIONS AND CONDITIONS. THE SAID AREAS ARE NOT HEREBY DESIGNATED FOR USE TO THE GENERAL PUBLIC BUT FOR THE COMMON USE AND ENJOYMENT OF SAID HOMEOWNERS, AS MORE FULLY PROVIDED IN SAID RESTRICTIONS.



VICINITY MAP  
SCALE 1" = 2,000'

THE PLATTING OF THE LAND HEREON SHOWN IS WITH THE FREE CONSENT AND IN ACCORDANCE WITH THE DESIRE OF THE UNDERSIGNED OWNERS, PROPRIETORS, AND TRUSTEES, IF ANY.  
ATLANTIC HOMES DEVELOPMENT CORPORATION

KENNETH L. ALLEN—PRESIDENT SVEIN J. LASSEN—SECRETARY

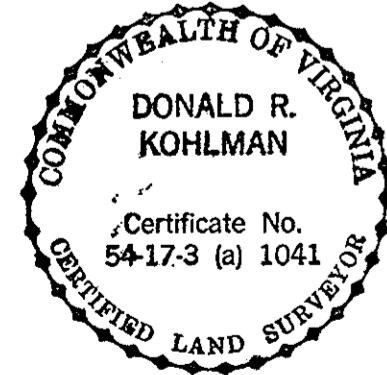
*Francis K. Barber*, A NOTARY PUBLIC IN AND FOR THE City of Newport News, DO HEREBY CERTIFY THAT THE ABOVE NAMED PERSONS WHOSE NAMES ARE SIGNED TO THE FOREGOING WRITING HAVE ACKNOWLEDGE THE SAME BEFORE ME IN MY City AND STATE AFORESAID.  
GIVEN UNDER MY HAND THIS 15th DAY OF October 1986

*Francis K. Barber*  
NOTARY PUBLIC

MY COMMISSION EXPIRES July 1, 1990

TO THE BEST OF MY KNOWLEDGE AND BELIEF, ALL THE REQUIREMENTS AS SET FORTH IN THE ORDINANCE FOR APPROVING PLATS OF SUBDIVISION IN THE COUNTY OF YORK, VIRGINIA, HAVE BEEN COMPLIED WITH INCLUDING A CLOSURE OF NOT LESS THAN 1/10,000.

THIS IS TO CERTIFY THAT THE LAND EMBRACED IN THIS SUBDIVISION IS IN THE NAME OF ATLANTIC HOMES DEVELOPMENT CORPORATION, A VIRGINIA CORPORATION, AND WAS ACQUIRED FROM BANK OF VIRGINIA TRUST COMPANY, TRUSTEE, BY DEED DATED AUGUST 23, 1983 AND DULY RECORDED IN THE CLERK'S OFFICE OF THE CIRCUIT COURT OF THE COUNTY OF YORK, VIRGINIA, IN DEED BOOK 383, PAGE 692. I CERTIFY THAT MONUMENTS AS SHOWN ON THE PLAT WILL BE SET ON OR BEFORE JUNE 31, 1987.



*Donald R. Kohlman*  
DONALD R. KOHLMAN  
CERTIFIED LAND SURVEYOR

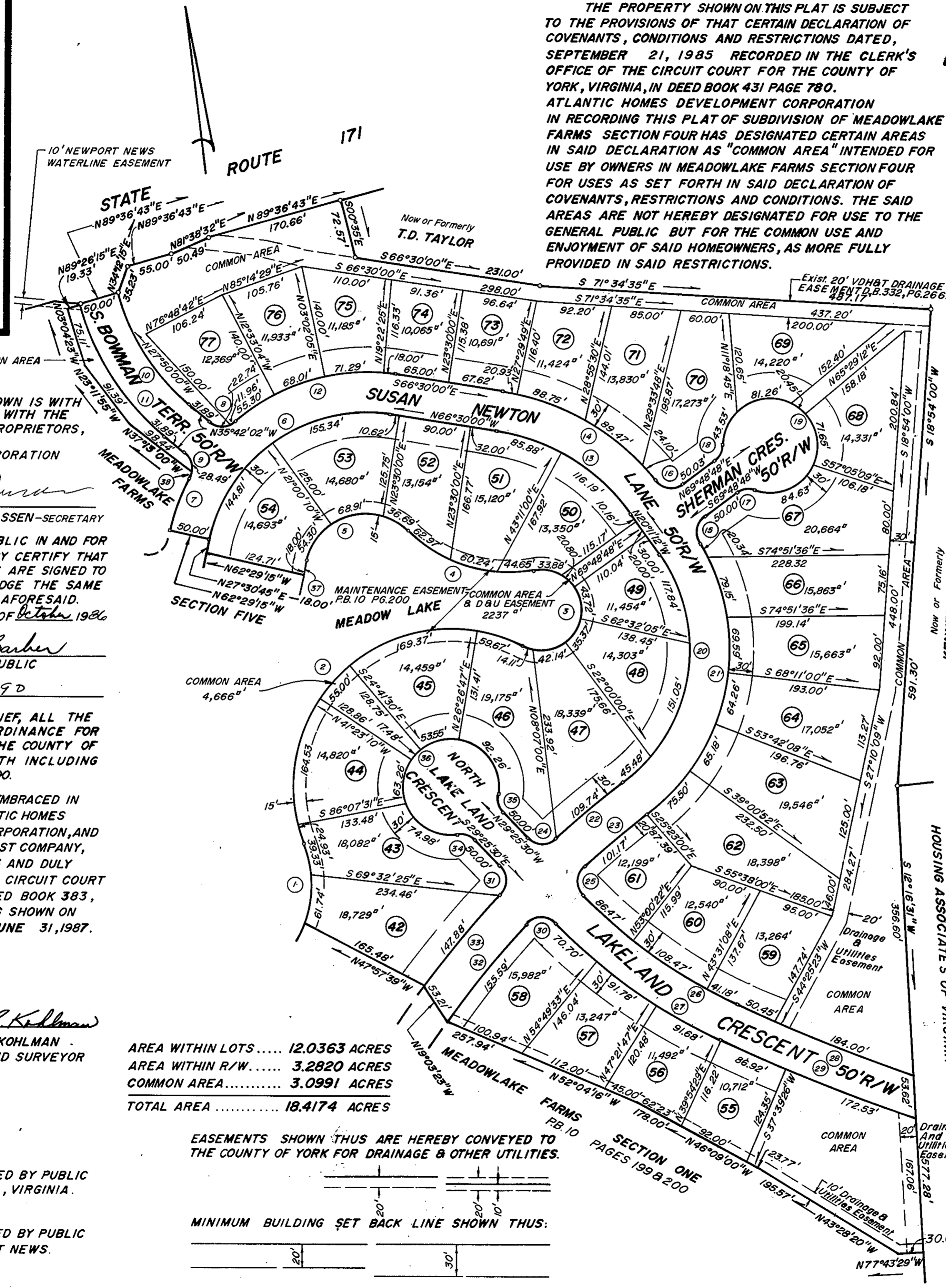
AREA WITHIN LOTS ..... 12.0363 ACRES  
AREA WITHIN R/W ..... 3.2820 ACRES  
COMMON AREA ..... 3.0991 ACRES  
TOTAL AREA ..... 18.4174 ACRES

EASEMENTS SHOWN THUS ARE HEREBY CONVEYED TO THE COUNTY OF YORK FOR DRAINAGE & OTHER UTILITIES.

MINIMUM BUILDING SET BACK LINE SHOWN THUS:

EACH LOT WITHIN THIS SUBDIVISION IS SERVED BY PUBLIC SEWER PROVIDED BY THE COUNTY OF YORK, VIRGINIA.

EACH LOT WITHIN THIS SUBDIVISION IS SERVED BY PUBLIC WATER PROVIDED BY THE CITY OF NEWPORT NEWS.



CURVE DATA TABLE						
No.	DELTA	RADIUS	TAN.	ARC	CHORD	CH. BEARING
1	42°53'43"	135.00'	53.04'	101.07'	98.73'	N 14° 46' 28" E
2	139°07'38"	195.00'	523.32'	473.50'	365.45'	N 62°53' 26" E
3	142° 15' 28"	50.00'	146.28'	124.14'	94.63'	N 23° 34' 59" E
4	54° 57' 23"	175.00'	91.01'	167.85'	161.49'	N 57° 48' 36" W
5	122° 09' 20"	75.00'	135.74'	159.90'	131.29'	S 88° 35' 25" W
6	85° 59' 15"	200.00'	186.46'	300.15'	272.77'	S 70° 30' 22" W
7	16° 18' 41"	250.00'	35.83'	71.17'	70.93'	N 35° 40' 05" E
8	79° 31' 28"	25.00'	20.80'	34.70'	31.98'	S 75° 27' 46" E
9	79° 31' 28"	25.00'	20.80'	34.70'	31.98'	N 04° 03' 42" E
10	35° 18' 45"	270.32'	86.04'	166.60'	163.98'	S 18° 02' 39" W
11	35° 18' 45"	320.32'	101.96'	197.42'	194.31'	N 18° 02' 39" W
12	48° 43' 29"	250.00'	113.21'	212.60'	206.25'	N 89° 08' 15" E
13	46° 18' 48"	250.00'	106.93'	202.08'	196.62'	N 43° 20' 36" W
14	42° 38' 12"	300.00'	117.08'	223.25'	218.13'	S 45° 10' 54" E
15	86° 05' 56"	25.00'	23.35'	37.57'	34.13'	S 26° 45' 50" W
16	86° 19' 24"	25.00'	23.44'	37.67'	34.20'	S 67° 01' 30" E
17	53° 58' 07"	25.00'	12.73'	23.55'	22.69'	N 83° 12' 08" W
18	53° 58' 07"	25.00'	12.73'	23.55'	22.69'	N 42° 49' 44" E
19	287° 56' 16"	60.00'	—	301.53'	—	—
20	88° 11' 12"	204.25'	197.89'	314.37'	284.25'	N 23° 54' 22" E
21	84° 17' 08"	254.25'	230.08'	374.02'	341.19'	S 25° 51' 26" W
22	05° 07' 58"	1225.00'	54.91'	109.74'	109.70'	N 65° 26' 01" E
23	04° 56' 00"	1175.00'	50.62'	101.17'	101.14'	S 65° 32' 00" W
24	87° 42' 26"	25.00'	24.02'	38.27'	34.64'	S 73° 16' 45" E
25	92° 29' 30"	25.00'	26.11'	40.36'	36.12'	S 16° 49' 15" W
26	20° 40' 00"	654.60'	119.35'	236.12'	234.84'	S 39° 45' 31" E
27	20° 40' 00"	704.60'	128.47'	254.15'	252.78'	N 39° 45' 31" W
28	06° 12' 41"	2162.58'	117.34'	234.45'	234.33'	S 53° 11' 52" E
29	06° 43' 07"	2212.58'	129.87'	259.45'	259.30'	N 53° 27' 04" W
30	92° 29' 31"	25.00'	26.11'	40.36'	36.12'	N 75° 40' 16" W
31	87° 42' 27"	25.00'	24.02'	38.27'	34.64'	N 14° 25' 43" E
32	07° 35' 13"	1175.00'	77.91'	155.59'	155.47'	S 54° 17' 22" W
33	06° 55' 00"	1225.00'	74.03'	147.88'	147.79'	N 54° 49' 27" E
34	53° 58' 05"	25.00'	12.73'	23.55'	22.69'	N 56° 24' 32" W
35	53° 58' 05"	25.00'	12.73'	23.55'	22.69'	S 02° 26' 27" E
36	287° 56' 16"	60.00'	—	301.53'	—	—
37	01° 49' 32"	585.00'	9.00'	18.00'	18.00'	N 28° 25' 33" E
38	14° 13' 51"	25.00'	3.12'	6.21'	6.19'	N 36° 42' 32" E

APPROVED:  
YORK COUNTY BOARD OF SUPERVISORS  
BY *Richardson*  
PLAT APPROVING AGENT  
DATE *November 12, 1986*

STATE OF VIRGINIA  
COUNTY OF YORK  
IN THE CLERK'S OFFICE OF THE CIRCUIT COURT,  
FOR THE COUNTY OF YORK THE 12 DAY OF *Nov 1986*,  
THIS MAP WAS PRESENTED AND ADMITTED TO RECORD  
AS THE LAW DIRECTS, PLAT BOOK *10*, PAGE *301*  
*Edith M. Elliott*  
TESTE: *Nancy Stoney*  
CLERK