

PLAT
OF THE PROPERTY OF
H. R. ASHE
AND
MARS CORPORATION
COUNTY OF YORK, VIRGINIA

REFERENCES USED IN PREPARATION OF THIS PLAT:

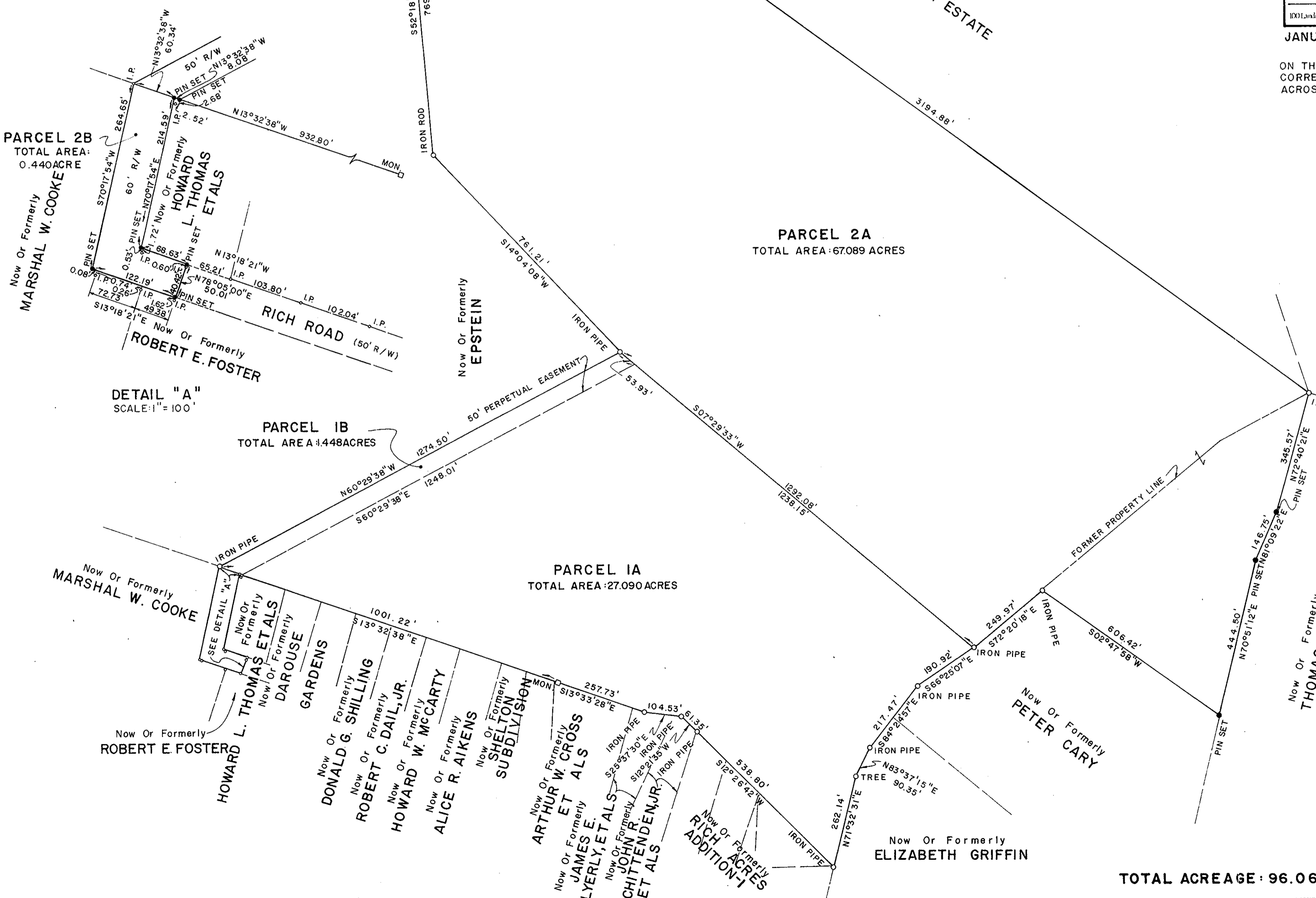
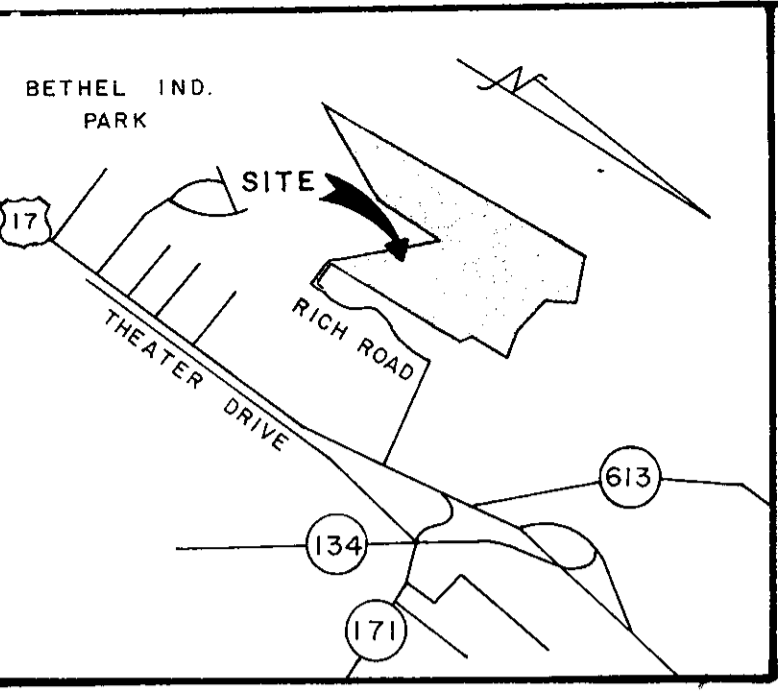
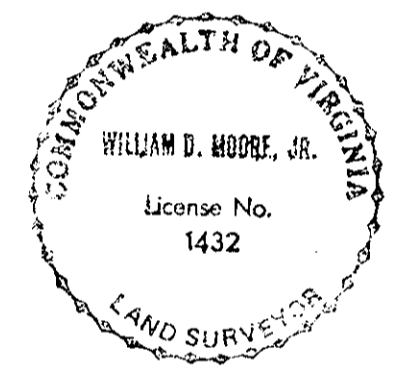
D.B.	340	p.	502
D.B.	117	p.	480
D.B.	116	p.	481
D.B.	376	p.	719
D.B.	383	p.	171
D.B.	176	p.	664
P.B.	117	p.	484
P.B.	117	p.	479
D.B.	340	p.	506
P.B.	8	p.	254
P.B.	8	p.	246
D.B.	196	p.	682
P.B.	5	p.	83



JANUARY 24, 1986 SCALE: 1" = 200'

I HEREBY CERTIFY THAT THIS SURVEY WAS MADE ON THE GROUND AS PER RECORDED DESCRIPTION AND IS CORRECT; THERE ARE NO ENCROACHMENTS EITHER WAY ACROSS PROPERTY LINES EXCEPT AS SHOWN.

SIGNED: *William D. Moore, Jr.* DATE: 1/24/86
WILLIAM D. MOORE, JR.
L.S. 1432



CURRENT PROPERTY OWNERS:

H. R. ASHE / PARCEL 1A & 1B
D.B. 340 p. 502 (YORK COUNTY)
MARS CORP. / PARCEL 2A & 2B
D.B. 117 p. 480 (YORK COUNTY)

Filed in the Clerk's Office, Circuit Court, York Co., Va.
the 17th day of Dec. 1986

Tested: *Edith M. Elliott, Clerk*
Thomas Stone D.C.

Plat Book No. 10 Page 321
Deed Book 463 page 619

NOTE: THIS IS NOT A SUBDIVISION PLAT

PIPES SET SHOWN THUS

PIPES FOUND SHOWN THUS

MONUMENTS FOUND SHOWN THUS

TOTAL ACREAGE: 96.067