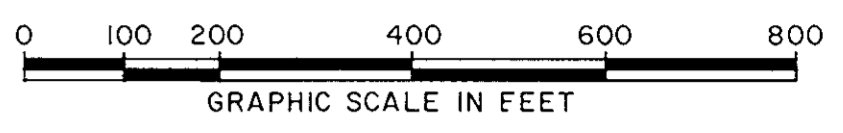
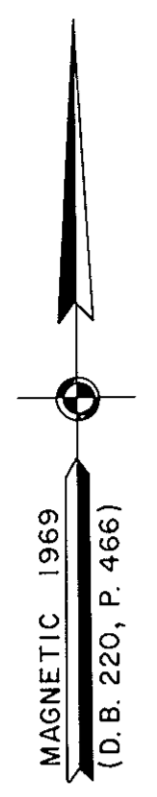
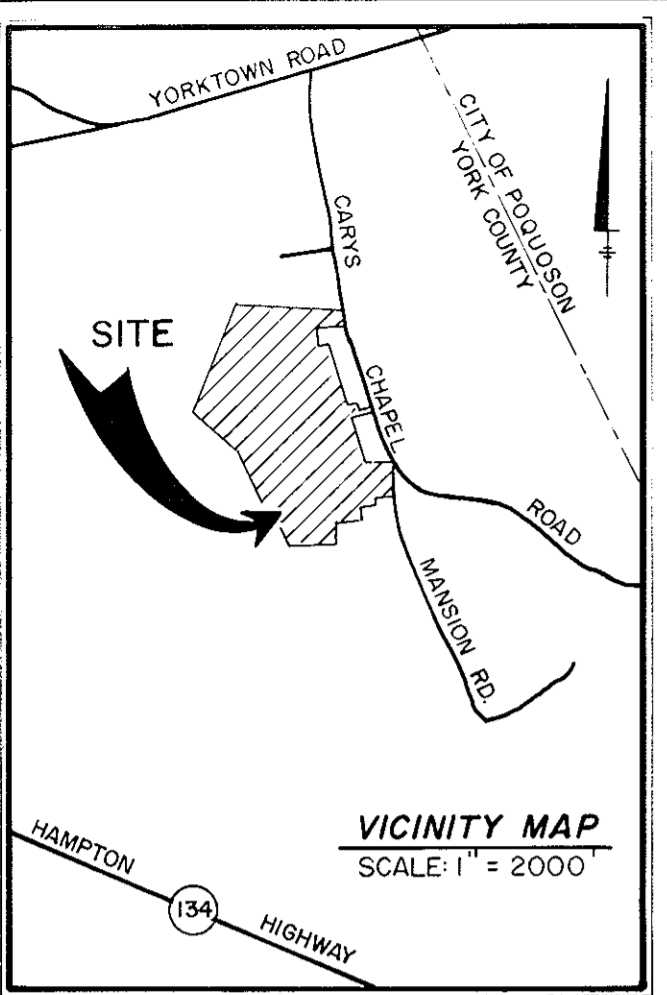


PLAT OF
A PARCEL OF LAND CONTAINING
104.714 ACRES
FOR
FISCELLA & FISCELLA,
A VIRGINIA GENERAL PARTNERSHIP
BETHEL DISTRICT COUNTY OF YORK, VIRGINIA
SCALE: 1" = 200'
JULY 20, 1987



THE SIRINE GROUP, LTD.
SURVEYORS • ENGINEERS • PLANNERS
BOX 450, ROUTE 17
WHITE MARSH, VIRGINIA
23183



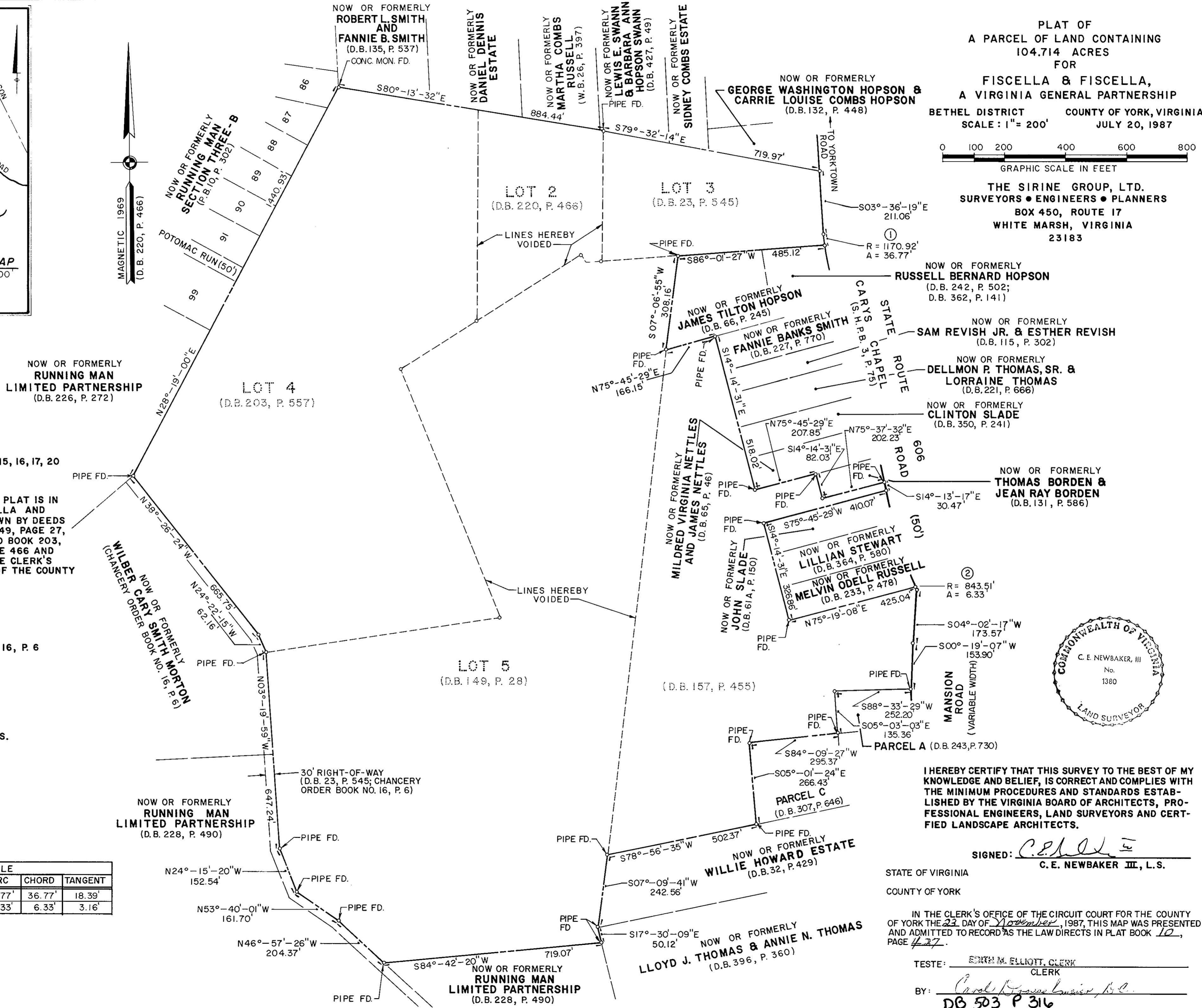
PROPERTY IS TAX MAP PARCELS 15, 16, 17, 20 AND 35, SECTION 38.

THE PROPERTY SHOWN ON THIS PLAT IS IN THE NAME OF ROBERT J. FISCELLA AND BENJAMIN J. FISCELLA AS SHOWN BY DEEDS DULY RECORDED IN DEED BOOK 149, PAGE 27, DEED BOOK 157, PAGE 454, DEED BOOK 203, PAGE 557, DEED BOOK 220, PAGE 466 AND DEED BOOK 223, PAGE 655 IN THE CLERK'S OFFICE OF THE CIRCUIT COURT OF THE COUNTY OF YORK, VIRGINIA.

PROPERTY REFERENCES:
D.B. 23, P. 545
D.B. 381, P. 765
S.H.P.B. 3, P. 75
CHANCERY ORDER BOOK NO. 16, P. 6

TOTAL AREA = 104.714 ACRES.

CURVE TABLE					
NO.	RADIUS	DELTA	ARC	CHORD	TANGENT
1	1170.92'	01°-47'-57"	36.77'	36.77'	18.39'
2	843.51'	00°-25'-47"	6.33'	6.33'	3.16'



I HEREBY CERTIFY THAT THIS SURVEY TO THE BEST OF MY KNOWLEDGE AND BELIEF, IS CORRECT AND COMPLIES WITH THE MINIMUM PROCEDURES AND STANDARDS ESTABLISHED BY THE VIRGINIA BOARD OF ARCHITECTS, PROFESSIONAL ENGINEERS, LAND SURVEYORS AND CERTIFIED LANDSCAPE ARCHITECTS.

SIGNED: C. E. Newbaker III
C. E. NEWBAKER III, L.S.

STATE OF VIRGINIA
COUNTY OF YORK

IN THE CLERK'S OFFICE OF THE CIRCUIT COURT FOR THE COUNTY OF YORK THE 23 DAY OF November, 1987, THIS MAP WAS PRESENTED AND ADMITTED TO RECORD AS THE LAW DIRECTS IN PLAT BOOK 10, PAGE 427.

TESTE: Edith M. Elliott, CLERK

BY: Carol R. ...
DB 503 P 316