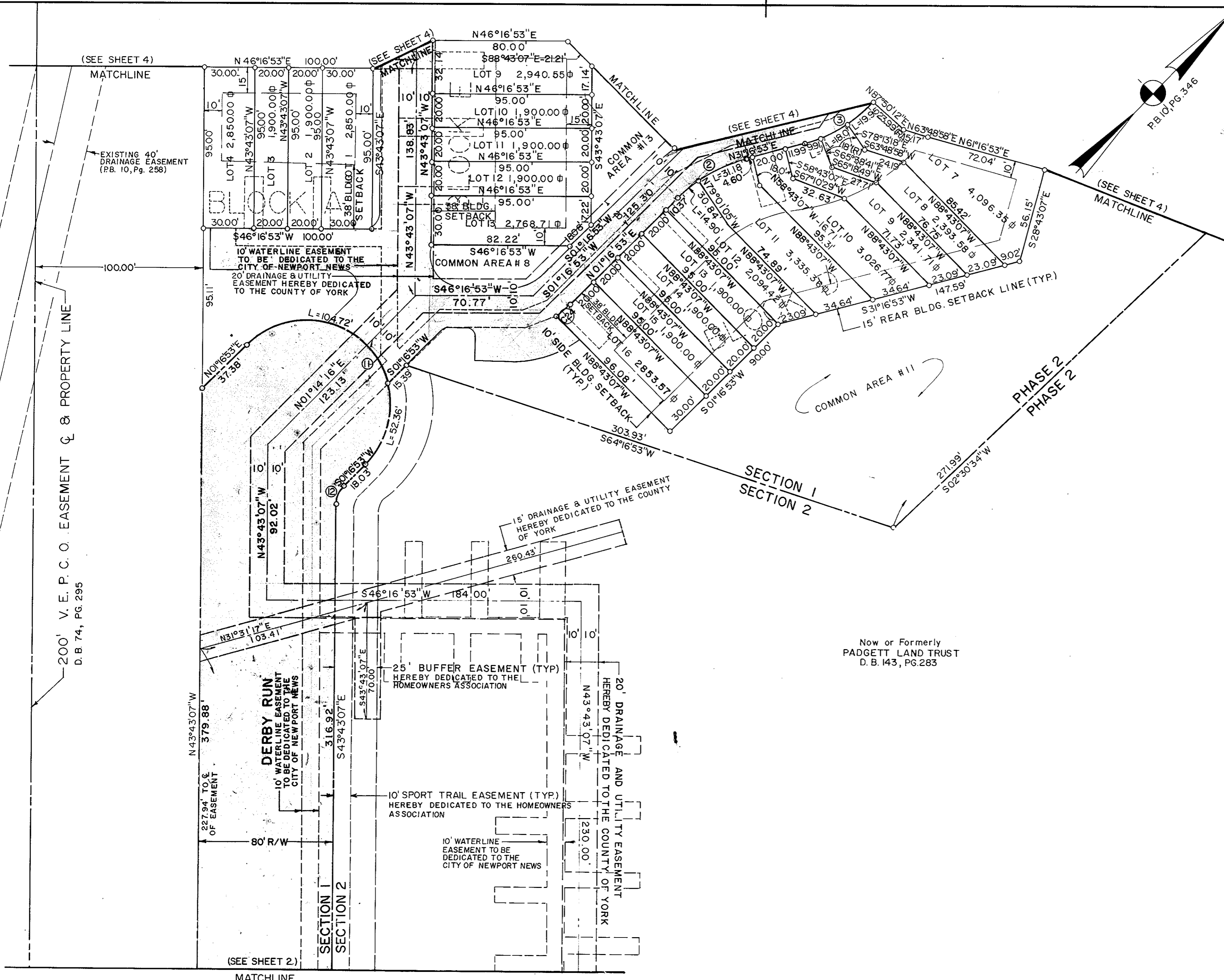


# YORKSHIRE DOWNS PHASE 2, SECTION I COUNTY OF YORK, VIRGINIA

**ta**  
**Talbot & Associates, Ltd.**  
Architects, Engineers, Planners, Surveyors, Landscape Architects

739 Tumble Shoals Blvd., Suite 1006, Newport News, Va. 23006

SCALE: 1" = 40' SEPT. 15, 1987  
SHEET 3 OF 4



PRIVATE STREETS & PARKING  
TO BE MAINTAINED BY THE HOMEOWNERS ASSOCIATION.

APPROVED:  
YORK COUNTY BOARD OF SUPERVISORS  
BY: *[Signature]*  
DATE: *Dec 30, 1987*

STATE OF VIRGINIA  
COUNTY OF YORK  
IN THE CLERK'S OFFICE OF THE CIRCUIT  
COURT FOR THE COUNTY OF YORK THE 30th  
DAY OF December, 1987 THIS MAP WAS  
PRESENTED AND ADMITTED TO RECORD AS  
THE LAW DIRECTS IN PLAT BOOK 10,  
PAGE 453  
TESTE: *[Signature]* CLERK  
BY: *[Signature]*