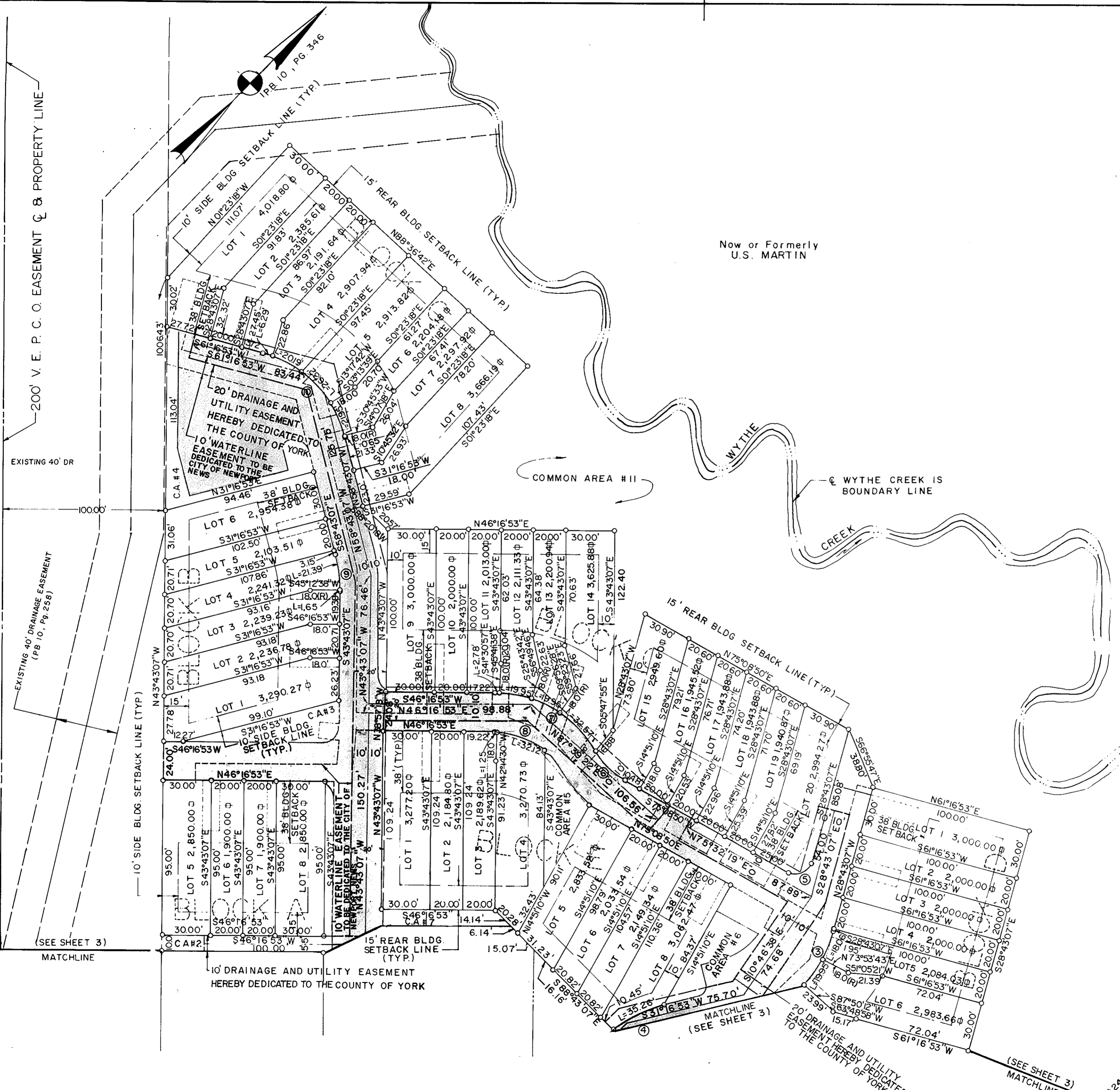


YORKSHIRE DOWNS  
PHASE 2, SECTION I  
COUNTY OF YORK, VIRGINIA



739 Thimble Shoals Blvd., Suite 1006, Newport News, Va. 23606

SCALE: 1" = 40' SEPT. 15, 1987  
SHEET 4 OF 4



Now or Formerly  
U.S. MARTIN

COMMON AREA #11

WYTHE CREEK IS  
BOUNDARY LINE

PRIVATE STREETS & PARKING  
TO BE MAINTAINED BY THE HOME-  
OWNERS ASSOCIATION.

APPROVED:  
YORK COUNTY BOARD OF SUPERVISORS  
BY: *[Signature]*  
DATE: *Nov 30, 1987*

STATE OF VIRGINIA  
COUNTY OF YORK  
IN THE CLERK'S OFFICE OF THE CIRCUIT  
COURT FOR THE COUNTY OF YORK THE 30<sup>th</sup>  
DAY OF *December*, 1987 THIS MAP WAS  
PRESENTED AND ADMITTED TO RECORD AS THE  
LAW DIRECTS IN PLAT BOOK *10* PAGE *454*

TESTE: *[Signature]*  
CLERK  
BY: *[Signature]*

(SEE SHEET 3)  
MATCHLINE

MATCHLINE  
(SEE SHEET 3)

(SEE SHEET 3)  
MATCHLINE

240 TO  
WYTHE CREEK