

YORKSHIRE DOWNS

PHASE 2, SECTION II
COUNTY OF YORK, VIRGINIA



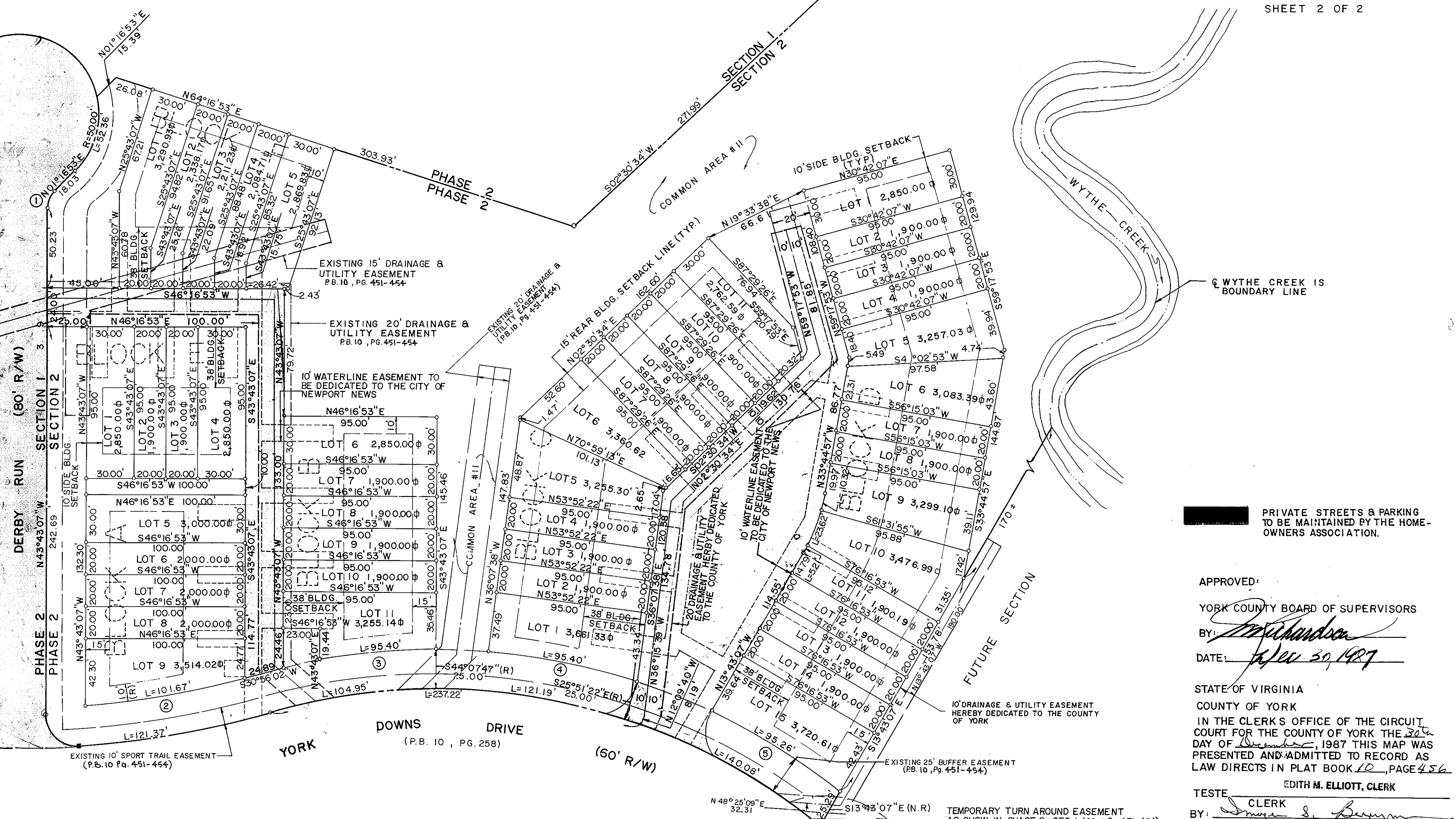
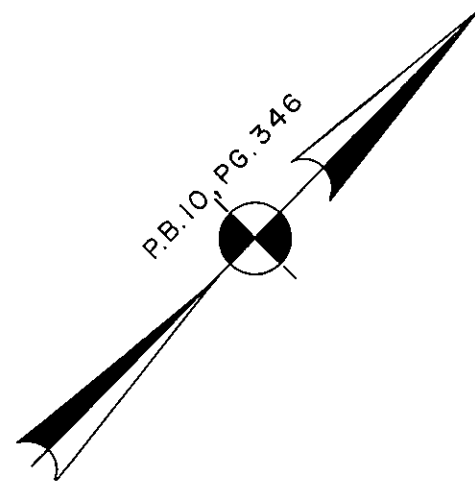
Talbot & Associates, Ltd.
Architects, Engineers, Planners, Surveyors, Landscape Architects

739 Thimble Shoals Blvd., Suite 1006, Newport News, Va. 23606

SCALE: 1" = 40'

SEPT. 14, 1987

SHEET 2 OF 2



PRIVATE STREETS & PARKING
TO BE MAINTAINED BY THE HOME-
OWNERS ASSOCIATION.

APPROVED:

YORK COUNTY BOARD OF SUPERVISORS

BY: *[Signature]*

DATE: *Nov 30, 1987*

STATE OF VIRGINIA

COUNTY OF YORK

IN THE CLERK'S OFFICE OF THE CIRCUIT
COURT FOR THE COUNTY OF YORK THIS 30th
DAY OF *November*, 1987 THIS MAP WAS
PRESENTED AND ADMITTED TO RECORD AS
LAW DIRECTS IN PLAT BOOK 10, PAGE 456

TESTE EDITH M. ELLIOTT, CLERK

CLERK
BY: *[Signature]*