

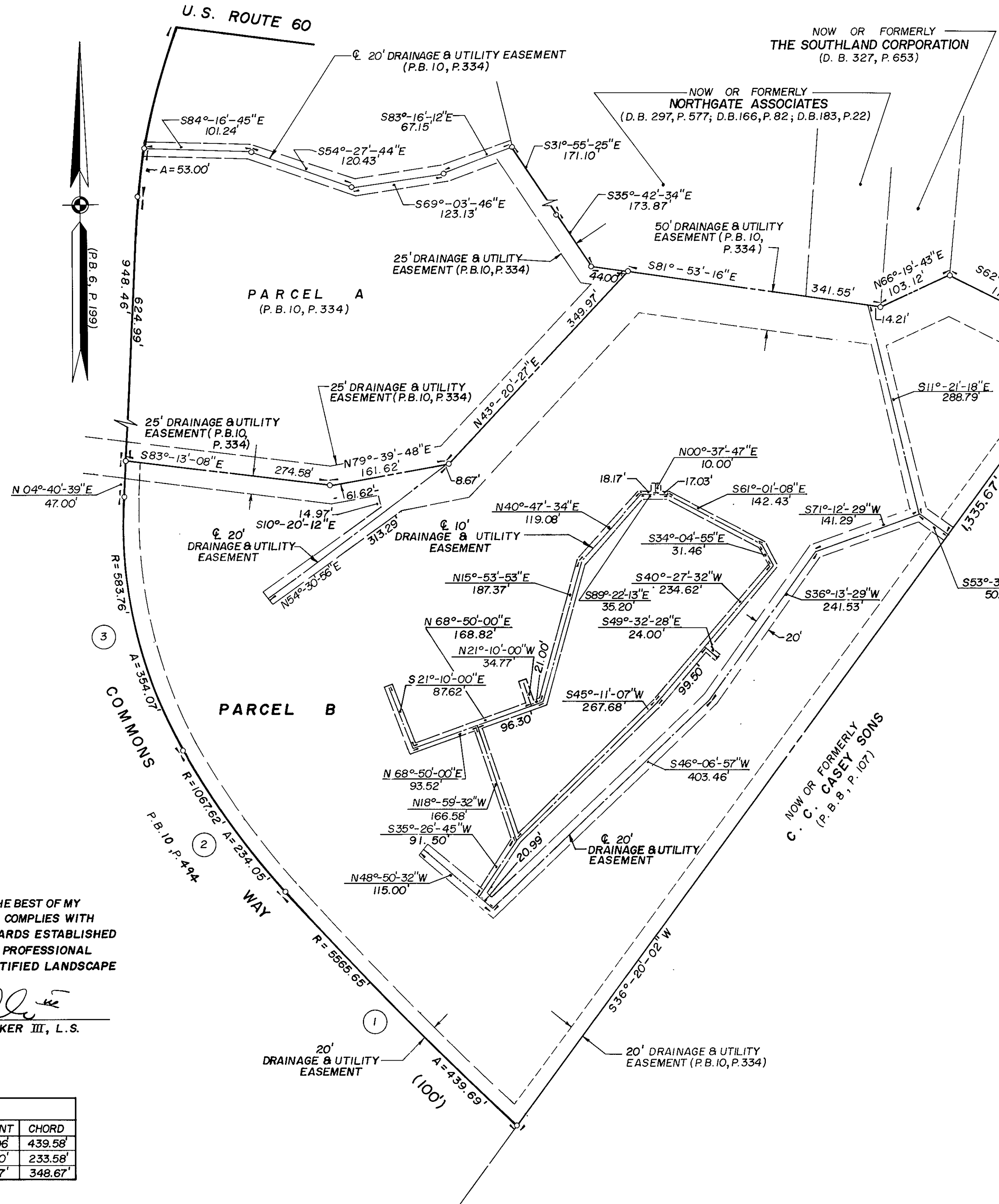
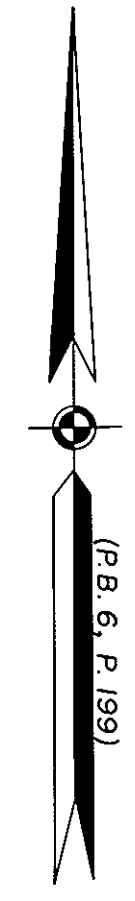
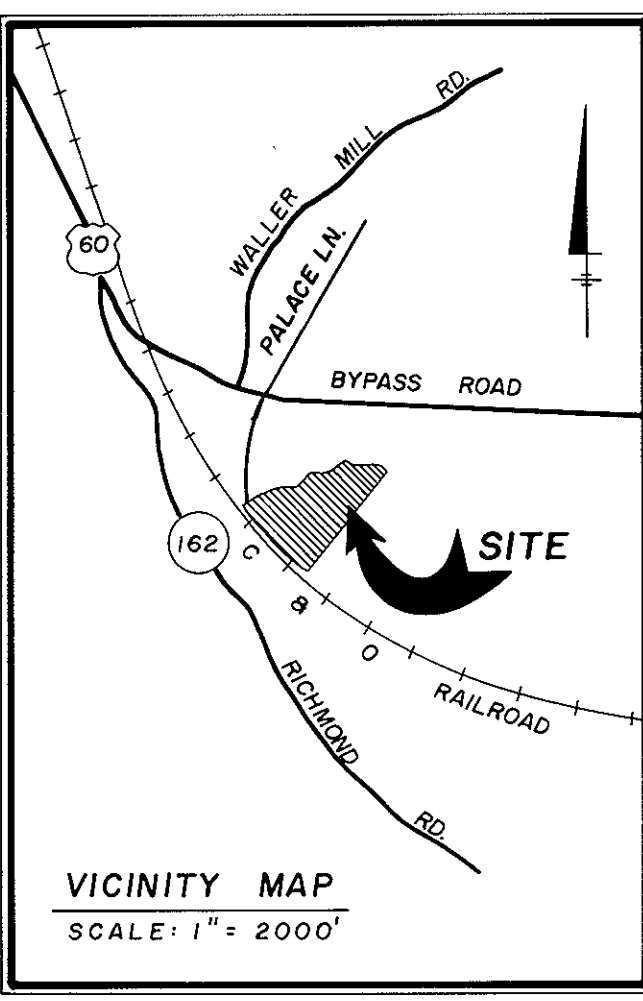
PLAT SHOWING DRAINAGE & UTILITY EASEMENTS
TO BE DEDICATED TO THE COUNTY OF YORK
BY
WILLIAMSBURG COMMONS, INC.,
A VIRGINIA CORPORATION
AND
HORNSBY LAND CO.
A LIMITED PARTNERSHIP
BRUTON DISTRICT COUNTY OF YORK, VIRGINIA
SCALE: 1" = 100'
FEBRUARY 10, 1988

GRAPHIC SCALE 0 50 100 200 300 400 FEET

THE SIRINE GROUP, LTD.
SURVEYORS • ENGINEERS • PLANNERS
P.O. BOX 450, ROUTE 17
WHITE MARSH, VIRGINIA 23183

NOW OR FORMERLY
CHEN HUEI LIU
(D.B. 56, P. 377)
NOW OR FORMERLY
E. F. GALLIMORE
(P.B. 1, P. 248)

NOW OR FORMERLY
C. C. CASEY SONS
(D.B. 286, P. 555)



I HEREBY CERTIFY THAT THIS SURVEY TO THE BEST OF MY KNOWLEDGE AND BELIEF IS CORRECT AND COMPLIES WITH THE MINIMUM PROCEDURES AND STANDARDS ESTABLISHED BY THE VIRGINIA BOARD OF ARCHITECTS, PROFESSIONAL ENGINEERS, LAND SURVEYORS AND CERTIFIED LANDSCAPE ARCHITECTS.

SIGNED: *C. E. Newbaker III*
C. E. NEWBAKER III, L.S.

APPROVED:
YORK COUNTY BOARD OF SUPERVISORS
BY: *[Signature]*
PLAT APPROVING AGENT
DATE: *Nov. 17, 1988*

STATE OF VIRGINIA
COUNTY OF YORK

IN THE CLERK'S OFFICE OF THE CIRCUIT COURT FOR THE COUNTY OF YORK THE 17th DAY OF March, 1988
THIS MAP WAS PRESENTED AND ADMITTED TO RECORD AS THE LAW DIRECTS IN PLAT BOOK 10, PAGE 495.

TESTE: *Edith M. Elliott, Clerk*
CLERK
BY: *[Signature]*

NO.	RADIUS	DELTA	ARC	TANGENT	CHORD
1	5565.65'	04°-31'-35"	439.69'	219.96'	439.58'
2	1067.62'	12°-33'-39"	234.05'	117.50'	233.58'
3	583.76'	34°-45'-06"	354.07'	182.67'	348.67'