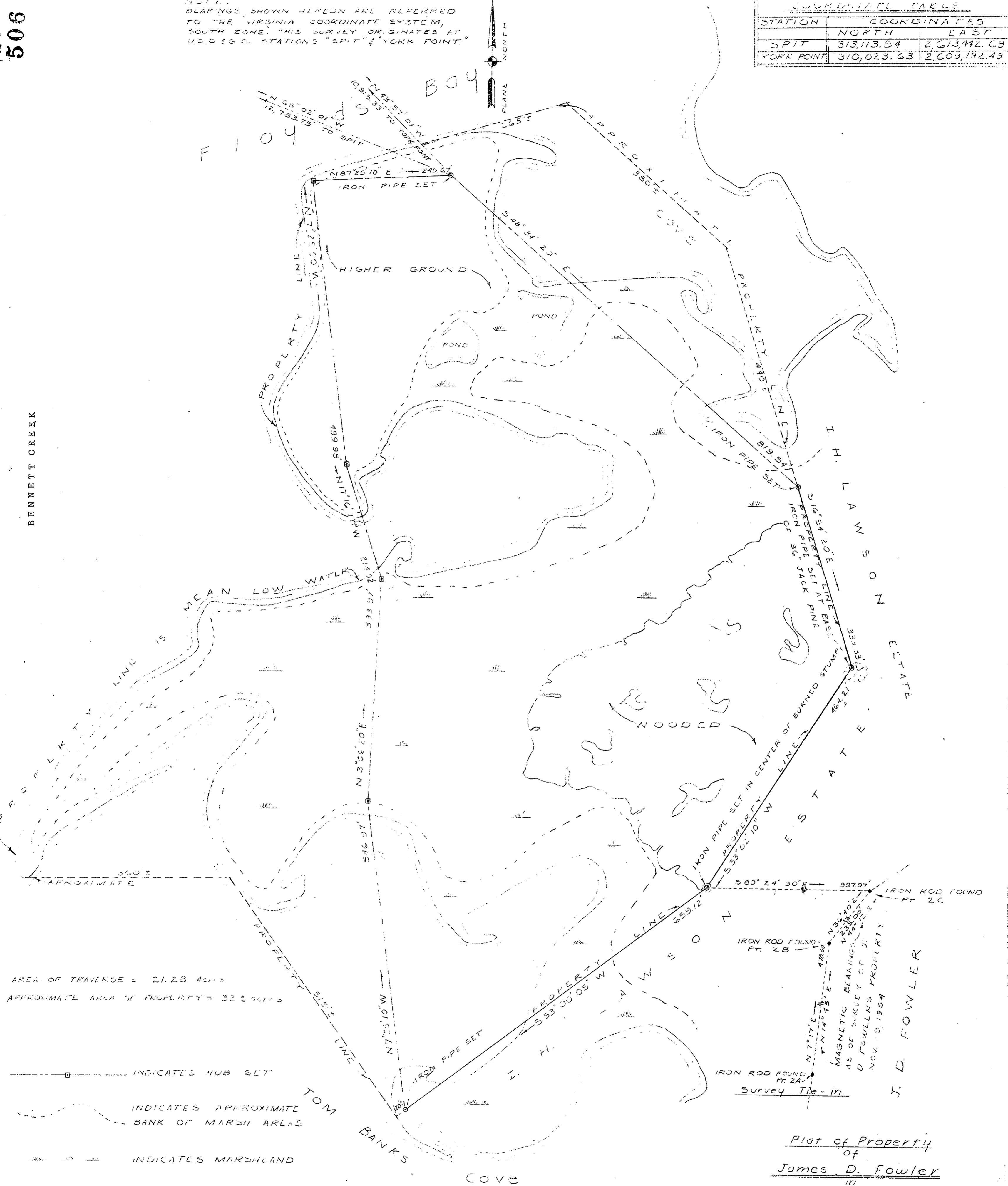


NOTE: BEARINGS SHOWN HEREON ARE REFERRED TO THE VIRGINIA COORDINATE SYSTEM, SOUTH ZONE. THIS SURVEY ORIGINATES AT U.S.C.E.S. STATIONS "SPIT" & "YORK POINT."

COORDINATE TABLE		
STATION	COORDINATES	
	NORTH	EAST
SPIT	313,113.54	2,613,442.69
YORK POINT	310,023.63	2,603,192.49



AREA OF TRAVERSE = 21.23 ACRES
APPROXIMATE AREA OF PROPERTY = 32.4 ACRES

- INDICATES HUB SET
- - - - - INDICATES APPROXIMATE BANK OF MARSH AREAS
- |—|— INDICATES MARSHLAND
- - - - - INDICATES TRAVERSE LINE

Filed Book No. 10 Page 506
 Filed in the Clerk's Office, Circuit Court, York Co., Va.
 the 12th day of April 1988
 Tester: Edith M. Elliott, Clerk

H. C. Dischinger
 H. C. DISCHINGER C.E. & C.L.S.
 PARCEL TWO of Deed of JAMES D. FOWLER, et ux,
 to OWEN H. BELLAMY, dated April 8, 1988.

Plot of Property
of
James D. Fowler
 III
 Poquoson District
 York County, Va.
MURRAY & DISCHINGER ENGINEERS
 NEWPORT NEWS, VA.
 Scale: 1"=100' Date: July 12, 1987