

THE UNDERSIGNED CERTIFIES THAT THIS PLAN IS ACCURATE AND COMPLIES WITH THE PROVISIONS OF THE CODE OF VIRGINIA SECTION 55-79.58 (b) AND ALL UNITS DEPICTED HEREON HAVE BEEN SUBSTANTIALLY COMPLETED.

NOTES
 1. ALL BUILDING DIMENSIONS SHOWN HEREON ARE EXTERIOR DIMENSIONS AND ARE IN FEET.

STATE OF VIRGINIA
 COUNTY OF YORK

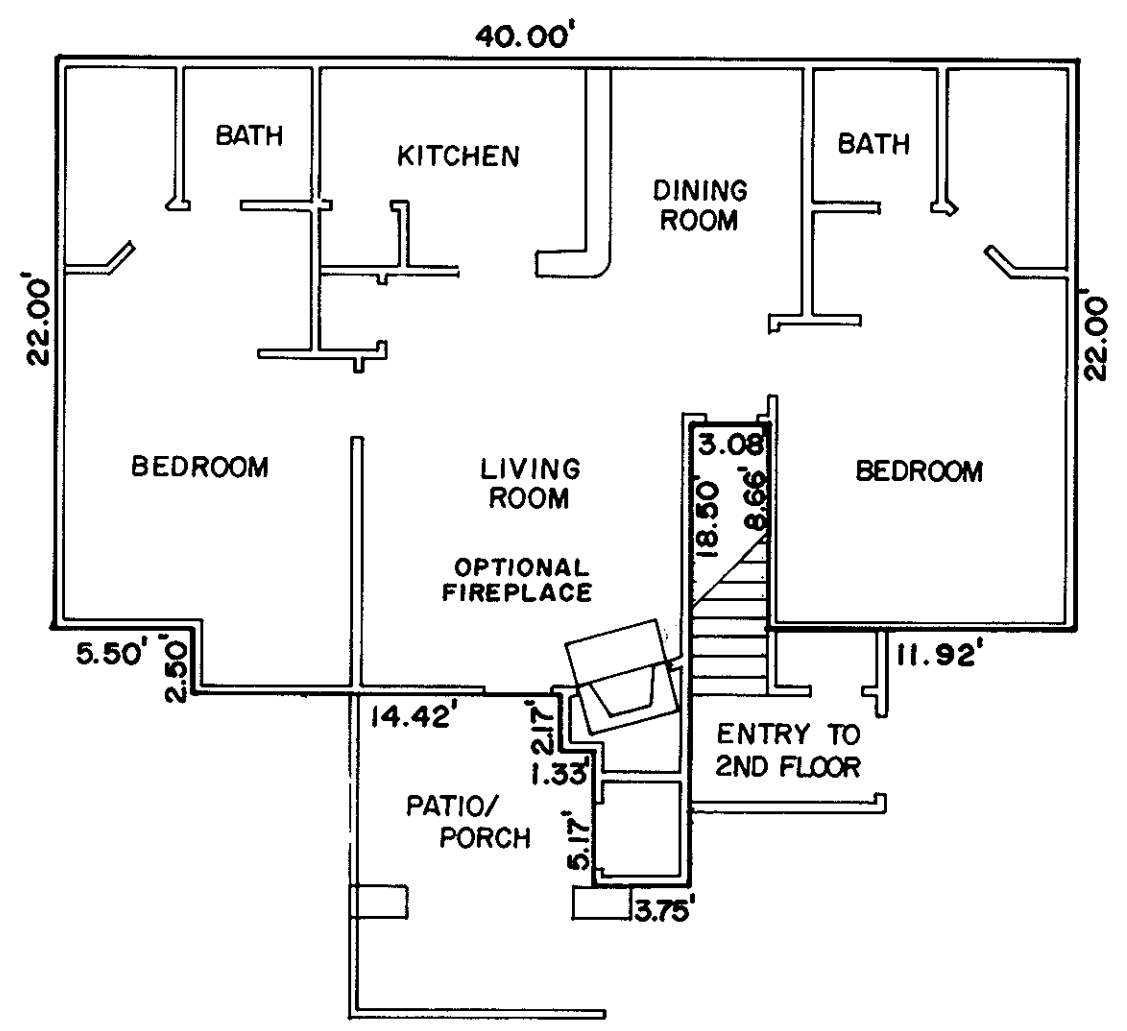
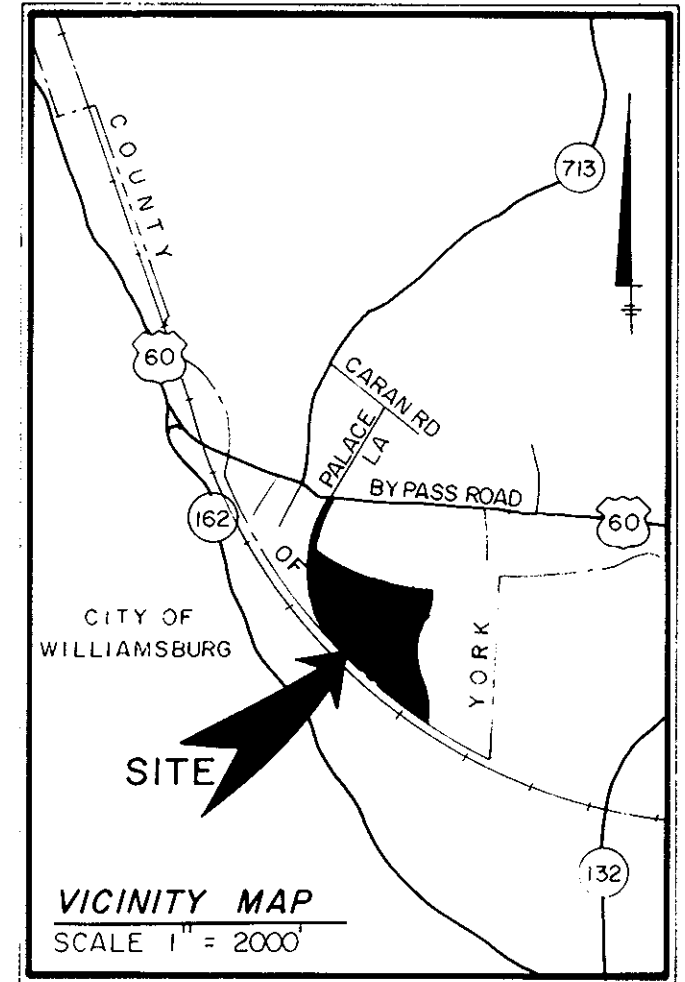
IN THE CLERK'S OFFICE OF THE CIRCUIT COURT FOR THE COUNTY OF YORK THE 19th DAY OF April, 1987 THIS MAP WAS PRESENTED AND ADMITTED TO RECORD AS THE LAW DIRECTS IN PLAT BOOK 10, PAGE 512.

SIGNED: Kenton B. Patrick DATE: 3/23/88
 KENTON B. PATRICK, P.E.

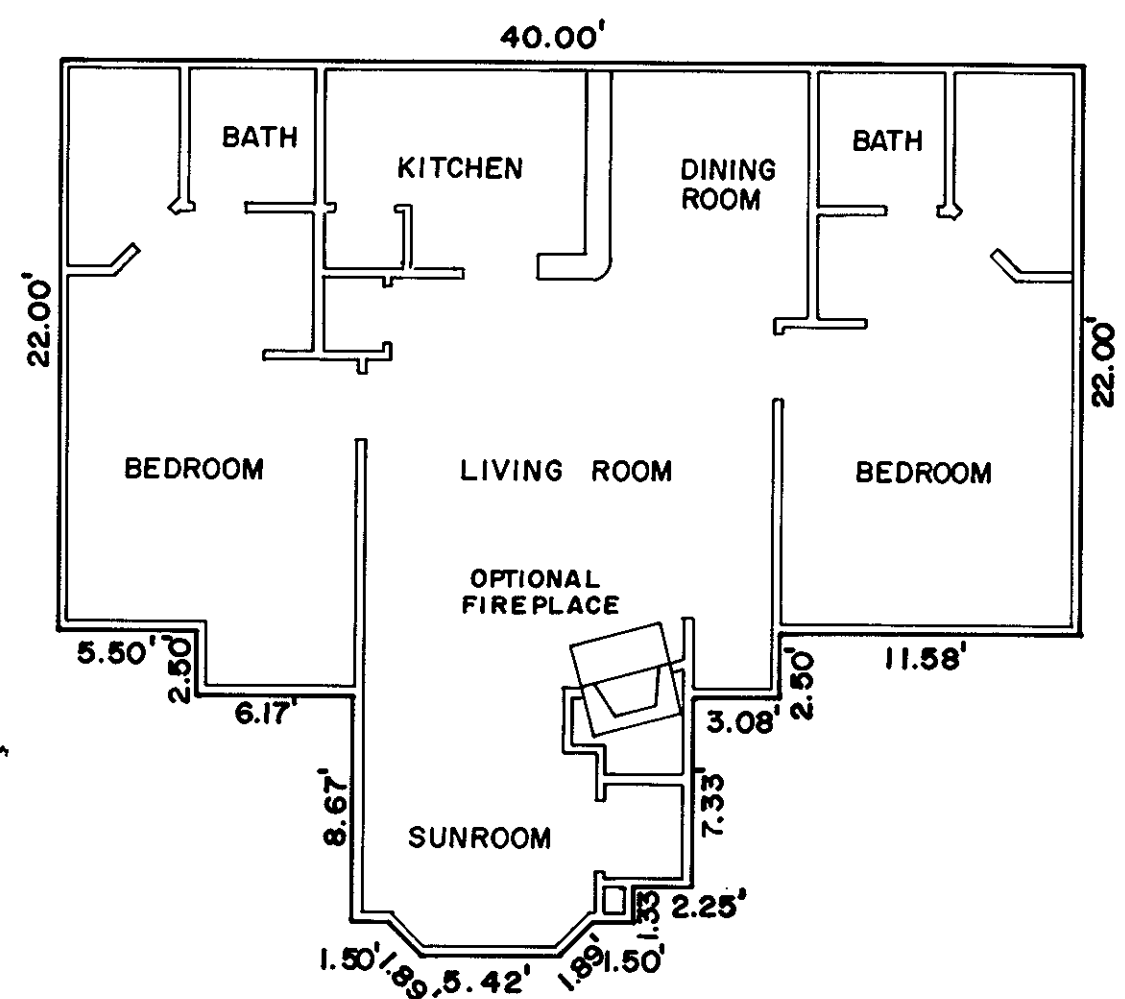


TESTE: EDITH M. ELLIOTT, CLERK
 CLERK

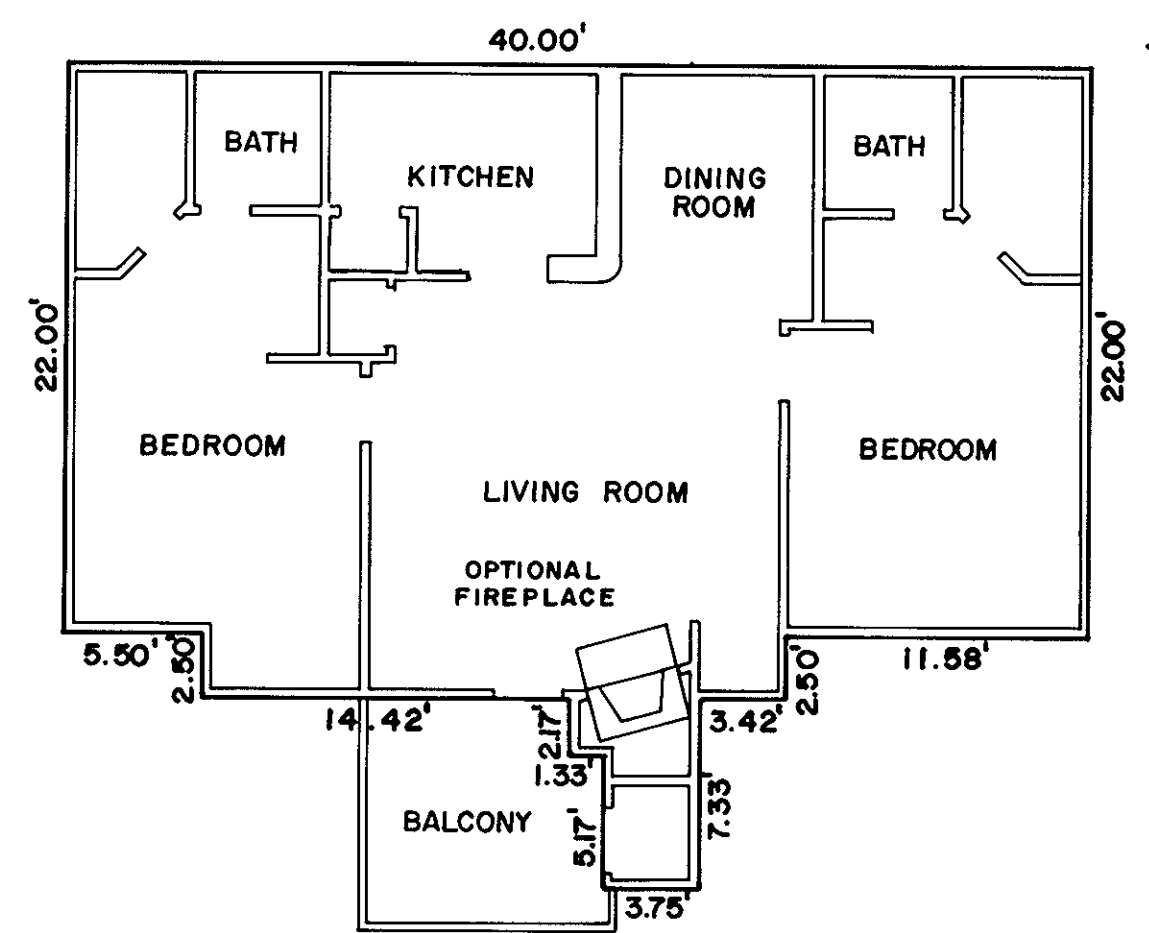
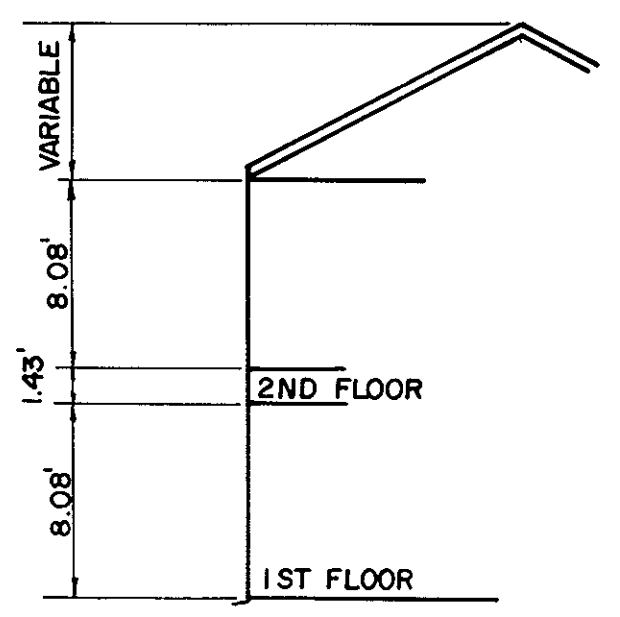
BY: Carol Drosselmeier, D.C.
 1:44 P.M.



MODEL D - TYPICAL UNITS A,B,C,D,E&F
 1ST FLOOR



MODEL D - TYPICAL UNITS H, J & L
 2ND FLOOR
 W/ SUNROOM



MODEL D - TYPICAL UNITS G, I & K
 2ND FLOOR
 W/ BALCONY

Exhibit B
 SHEET 3 OF 5
 PLAN OF
WILLIAMSBURG COMMONS CONDOMINIUMS
 FOR
WILLIAMSBURG COMMONS, INC.,
 A VIRGINIA CORPORATION
 BRUTON DISTRICT COUNTY OF YORK, VIRGINIA
 SCALE 1/8"=1'-0" JANUARY 15, 1988



THE SIRINE GROUP, LTD.
 SURVEYORS • ENGINEERS • PLANNERS
 P O BOX 450, ROUTE 17
 WHITE MARSH, VIRGINIA
 23183