

CURVE DATA

NO.	DELTA	RADIUS	ARC	TAN	CHORD	CHD. BEARING
1	115°32'23"	75.00'	151.24'	118.96'	126.89'	S01°36'17"W
2	115°32'23"	75.00'	151.24'	118.96'	126.89'	N01°36'17"E
3	90°00'00"	25.00'	39.27'	25.00'	35.36'	S43°23'43"E
4	90°00'00"	25.00'	39.27'	25.00'	35.36'	N46°36'17"E
5	90°00'00"	125.00'	196.35'	125.00'	176.78'	N43°23'43"W
6	90°00'00"	175.00'	274.89'	175.00'	247.49'	S43°23'43"E

SMITHY GLEN
SECTION ONE
COUNTY OF YORK, VIRGINIA

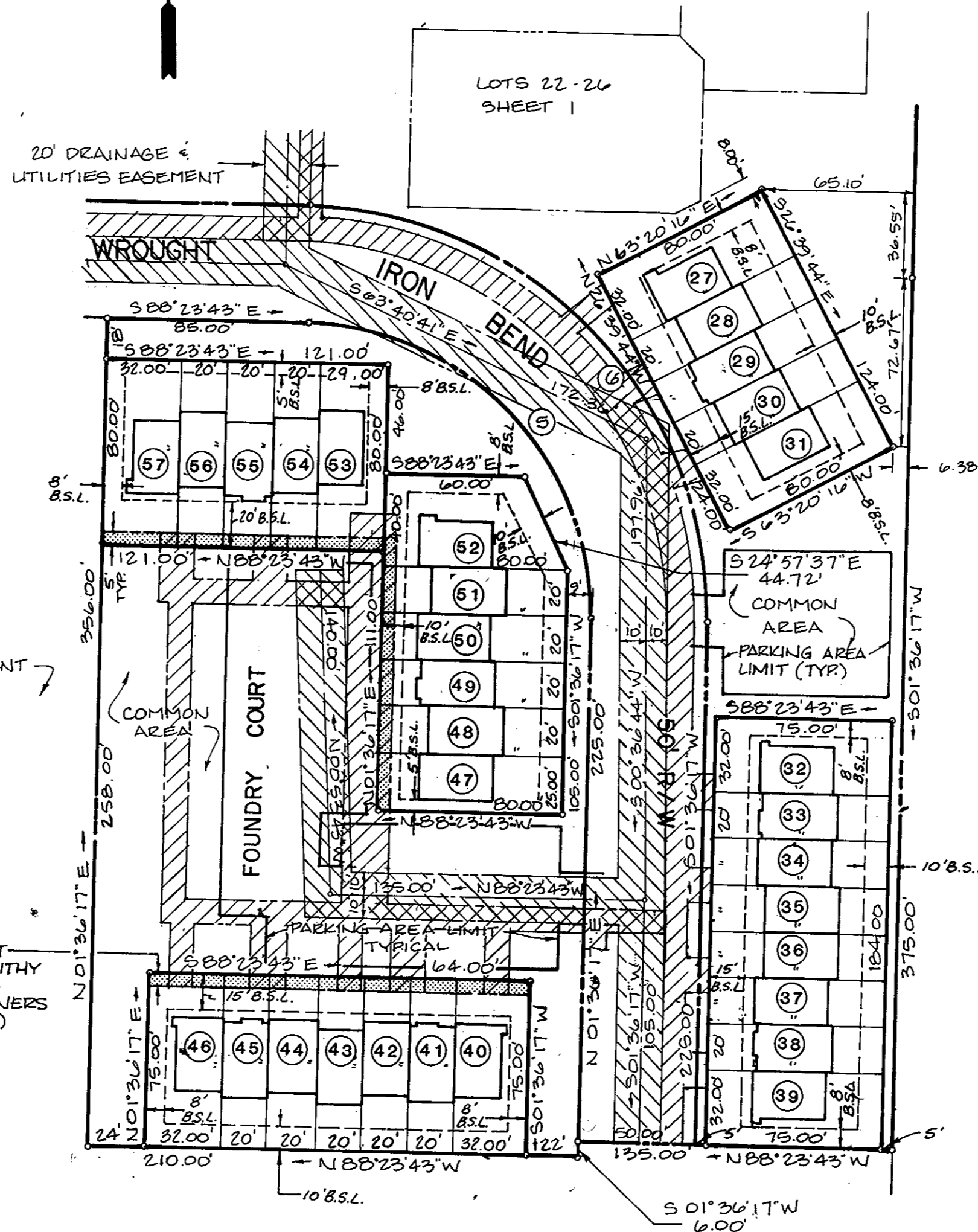
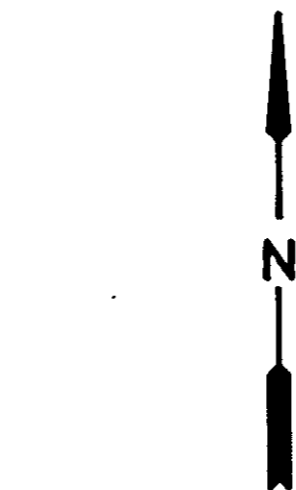
THE DeYOUNG - JOHNSON GROUP, INC.
P.O. BOX 197

WILLIAMSBURG, VA. 23187

SCALE: 1" = 50' JULY 24, 1987

SHEET 2 OF 2

LOT	AREA (S.F.)	LOT	AREA (S.F.)
1	2560	30	1600
2	1600	31	2560
3	1600	32	2400
4	1600	33	1500
5	1600	34	1500
6	1600	35	1500
7	2560	36	1500
8	2560	37	1500
9	1600	38	1500
10	1600	39	2400
11	1600	40	2400
12	1600	41	1500
13	1600	42	1500
14	2560	43	1500
15	2560	44	1500
16	1600	45	1500
17	1600	46	2400
18	1600	47	2000
19	1600	48	1600
20	1600	49	1600
21	2411.5	50	1600
22	2394	51	1600
23	1540	52	2800
24	1540	53	2320
25	1540	54	1600
26	2464	55	1600
27	2560	56	1600
28	1600	57	2560
29	1600		

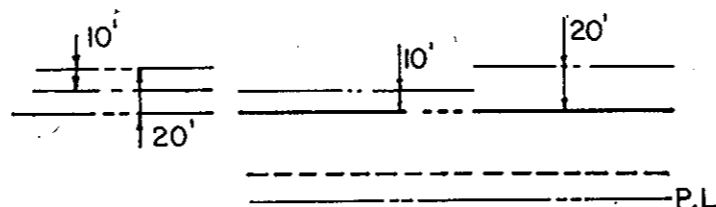


PROPERTY OF
U.S. GOVERNMENT

EASEMENT LEGEND

- INDICATES DRAINAGE AND UTILITIES EASEMENT HEREBY DEDICATED TO YORK COUNTY.
- INDICATES CITY OF NEWPORT NEWS WATER MAIN EASEMENT.
- INDICATES PRIVATE EASEMENT HEREBY DEDICATED TO SMITHY GLEN TOWNHOUSE PROJECT HOMEOWNERS ASSOCIATION.

NOTE:
COMMON AREAS DEPICTED ARE DEDICATED TO THE SMITHY GLEN TOWNHOUSE PROJECT HOMEOWNERS ASSOCIATION.



LEGEND

EASEMENTS SHOWN THUS ARE HEREBY CONVEYED TO THE COUNTY OF YORK FOR DRAINAGE & UTILITIES

BUILDING SETBACK LINE

MONUMENTS SHOWN THUS
IRON PIPES SHOWN THUS

APPROVED
YORK COUNTY BOARD OF SUPERVISORS

BY:
PLAT APPROVING AGENT

DATE: July 5, 1988

STATE OF VIRGINIA
COUNTY OF YORK

IN THE CLERK'S OFFICE OF THE CIRCUIT COURT FOR THE COUNTY OF YORK THE 5th DAY OF May, 1988
THIS MAP WAS PRESENTED & ADMITTED TO RECORD AS THE LAW DIRECTS IN PLAT BOOK 10, PAGE 521.

TESTE:
CLERK

BY:
Notary Public