

VICINITY MAP 1" = 2000'

THE PLATTING OF THE LAND HEREON SHOWN IS WITH THE FREE CONSENT AND IN ACCORDANCE WITH THE DESIRES OF THE UNDERSIGNED OWNERS, PROPRIETORS, AND TRUSTEES.

VIKING VILLAGE, LTD.

H.R. Ashe

H.R. ASHE - PRESIDENT

I, DAVID P. CAMPBELL

A NOTARY PUBLIC IN AND FOR THE CITY OF WILLIAMSBURG DO HEREBY CERTIFY THAT THE ABOVE NAMED PERSONS WHOSE NAMES ARE SIGNED TO THE FOREGOING WRITING HAVE ACKNOWLEDGED THE SAME BEFORE ME IN MY CITY/COUNTY AND STATE AFORESAID.

GIVEN UNDER MY HAND THIS 5TH DAY OF OCTOBER, 1987

David P. Campbell

NOTARY PUBLIC

MY COMMISSION EXPIRES AUGUST 28, 1990

TO THE BEST OF MY KNOWLEDGE AND BELIEF, ALL THE REQUIREMENTS AS SET FORTH IN THE ORDINANCE FOR APPROVING PLATS OF SUBDIVISIONS IN THE COUNTY OF YORK, VIRGINIA HAVE BEEN COMPLIED WITH, INCLUDING A CLOSURE OF NOT LESS THAN 1/10,000"

THIS IS TO CERTIFY THAT THE MONUMENTS AS SHOWN ON THIS PLAT WILL BE SET ON OR BEFORE JULY 24, 1989

VIKING VILLAGE, LTD.

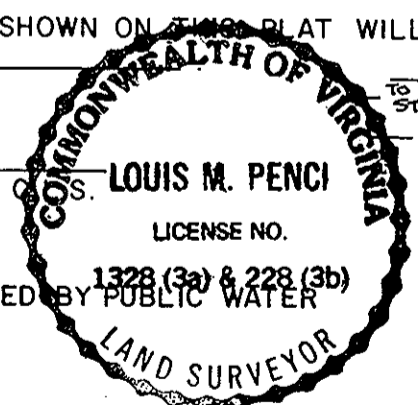
AND WAS ACQUIRED FROM:

CHARLES M. CARRITHERS

BY DEED DATED MAY 21, 1984 AND DULY RECORDED IN THE CLERK'S OFFICE OF THE CIRCUIT COURT OF THE COUNTY OF YORK, VIRGINIA, IN DEED BOOK 398, PAGE 437.

I CERTIFY THAT THE MONUMENTS AS SHOWN ON THIS PLAT WILL BE SET ON OR BEFORE JULY 24, 1989

Louis M. Pencic
LOUIS M. PENCIC



WATER:

EACH LOT WITHIN THIS SUBDIVISION IS SERVED BY PUBLIC WATER PROVIDED BY THE CITY OF NEWPORT NEWS.

SEWER:

EACH LOT WITHIN THIS SUBDIVISION IS SERVED BY PUBLIC SEWER PROVIDED BY THE COUNTY OF YORK.

APPROVED

YORK COUNTY BOARD OF SUPERVISORS

BY: *[Signature]*

DATE: *May 5, 1988*

AREA WITHIN LOTS 2.42 AC.
 AREA WITHIN RIGHT-OF-WAY 1.73 AC.
 AREA WITHIN COMMON AREA 4.10 AC.
 TOTAL SUBDIVIDED AREA 8.25 AC.

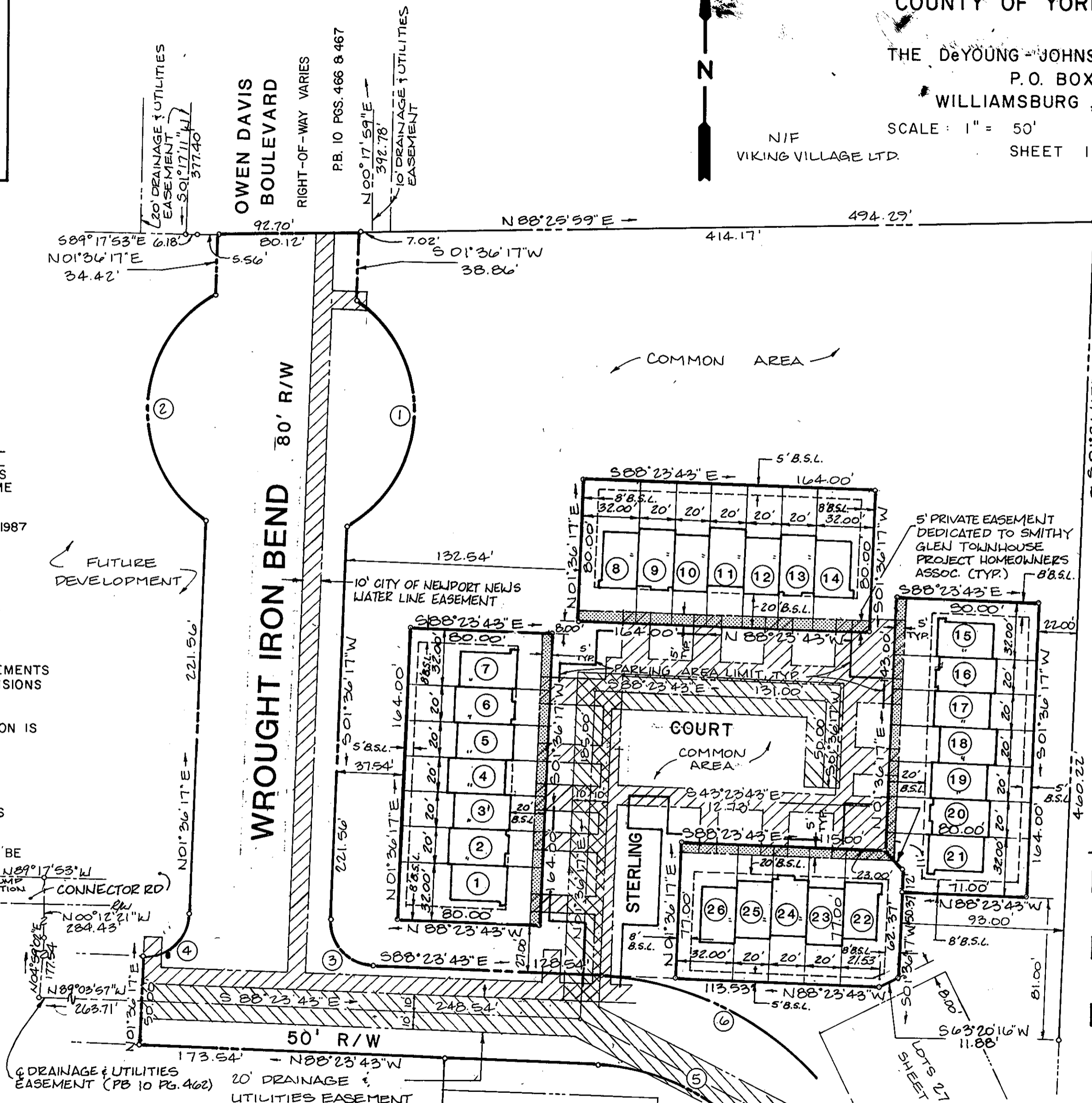
SMITHY GLEN
 SECTION ONE
 COUNTY OF YORK, VIRGINIA

THE DeYOUNG-JOHNSON GROUP, INC.
 P.O. BOX 197
 WILLIAMSBURG, VA. 23187

SCALE: 1" = 50' JULY 24, 1987

SHEET 1 OF 2

NIF
VIKING VILLAGE LTD.



EASEMENT LEGEND

- INDICATES DRAINAGE AND UTILITIES EASEMENT HEREBY DEDICATED TO YORK COUNTY
- INDICATES CITY OF NEWPORT NEWS WATER MAIN EASEMENT.
- INDICATES PRIVATE EASEMENT HEREBY DEDICATED TO SMITHY GLEN TOWNHOUSE PROJECT HOMEOWNERS ASSOCIATION.

NOTE: COMMON AREAS DEPICTED ARE DEDICATED TO THE SMITHY GLEN TOWNHOUSE PROJECT HOMEOWNERS ASSOCIATION.

STATE OF VIRGINIA
COUNTY OF YORK

IN THE CLERK'S OFFICE OF THE CIRCUIT COURT FOR THE COUNTY OF YORK THE 5th DAY OF May, 1988 THIS MAP WAS PRESENTED AND ADMITTED TO RECORD AS THE LAW DIRECTS IN PLAT BOOK 10, PAGE 522.

TESTE: *Edith M. Elliott, Clerk*
CLERK

BY: *Nancy Staneski*