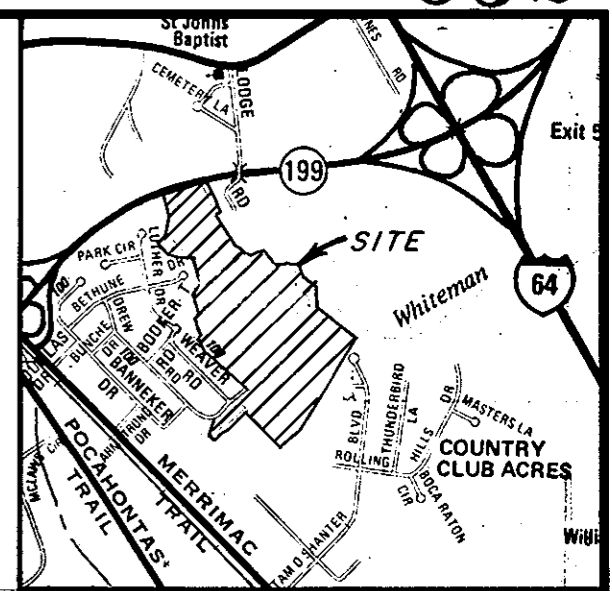
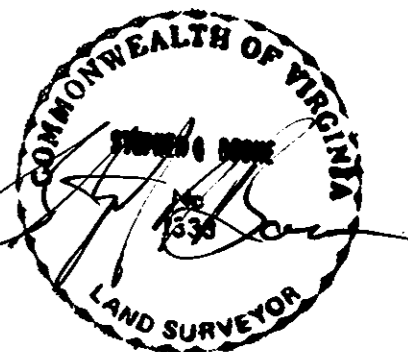


| NO. | DELTA | RADIUS | TAN. | ARC | CHORD | CH. BEARING |
|-----|-------------|----------|---------|---------|---------|-----------------|
| 1 | 39° 07' 50" | 133.54' | 47.46' | 91.20' | 89.44' | S 68° 52' 29" E |
| 2 | 47° 00' 11" | 156.13' | 67.89' | 128.08' | 124.52' | N 68° 03' 28" E |
| 3 | 03° 44' 44" | 3719.72' | 121.63' | 243.17' | 243.13' | N 76° 22' 07" E |



VICINITY MAP
SCALE: 1" = 2000'

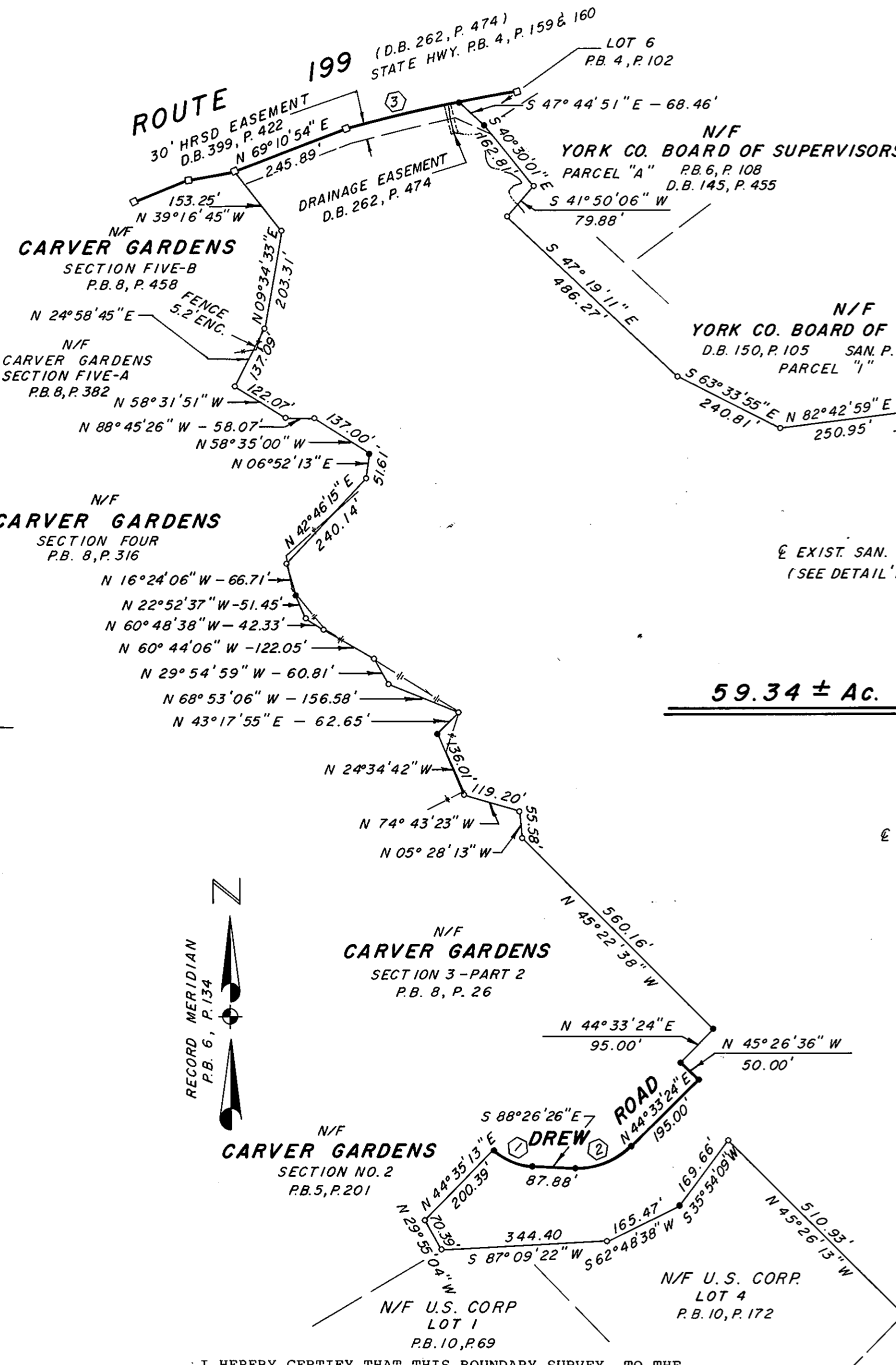


LEGEND

- IRON ROD OR PIPE FOUND
- MONUMENT FOUND
- IRON ROD SET
- CENTERLINE OF CREEK
- OVERHEAD WIRES
- ⊙ MANHOLE

DETAIL 'B'
SCALE: 1" = 100'

DETAIL 'A'
SCALE: 1" = 100'



59.34 ± Ac.

BOUNDARY SURVEY
OF PROPERTY OF
BENEL CORPORATION

BEING A PORTION OF PROPERTY DESCRIBED IN D.B. 150, P. 309
BRUTON MAGISTERIAL DISTRICT, YORK COUNTY, VIRGINIA

SCALE: 1" = 200'

DATE: MAY 6, 1988

I HEREBY CERTIFY THAT THIS BOUNDARY SURVEY, TO THE BEST OF MY KNOWLEDGE AND BELIEF, IS CORRECT AND COMPLIES WITH THE MINIMUM PROCEDURES AND STANDARDS ESTABLISHED BY THE VIRGINIA STATE BOARD OF ARCHITECTS, PROFESSIONAL ENGINEERS, LAND SURVEYORS, AND CERTIFIED LANDSCAPE ARCHITECTS.

Stephen I. Boone
STEPHEN I. BOONE L.S.

STEPHEN I. BOONE & ASSOCIATES, P.C.
LAND SURVEYORS
PORTSMOUTH, VIRGINIA

Plat Book No. 10 Page 532
Filed in the Clerk's Office, Circuit Court, York Co., Va. the 3rd day of June 1988
Teste:
Edith M. Elliott, Clerk