

VICINITY MAP

SCALE : 1" = 2,000'

- UNITS - AS INDICATED ON PLAT
- LIMITED COMMON ELEMENTS - HEATING / AIRCONDITIONER UNIT PLATFORM FOR EACH UNIT
- COMMON ELEMENTS - ALL OTHERS, INCLUDED BUT NOT LIMITED TO, GROUNDS SURROUNDING BUILDING, GENERAL GROUNDS, SIDE WALKS, PARKING LOTS.

TABB SQUARE

A CONDOMINIUM SUBDIVISION

COUNTY OF YORK, VIRGINIA

SCALE : 1" = 40' DATE : 6 APRIL 1988

DAVIS & ASSOCIATES
 LAND SURVEYOR PLANNER
 4033 GEORGE WASHINGTON
 MEMORIAL HIGHWAY
 GRAFTON, VIRGINIA 23692

THE PLATTING OF LAND HEREON SHOWN IS WITH THE FREE CONSENT AND IN ACCORDANCE WITH THE DESIRE OF THE UNDERSIGNED OWNERS, PROPRIETORS, AND TRUSTEES, IF ANY.

[Signature] 6/15/88
 17 ASSOCIATES, A VIRGINIA GENERAL PARTNERSHIP DATE
 JERRY A. PARKER, A GENERAL PARTNER

I, *[Signature]* A NOTARY PUBLIC IN AND FOR THE COUNTY OF YORK, VA. DO HEREBY CERTIFY THAT THE ABOVE NAMED PERSONS WHOSE NAMES ARE SIGNED TO THE FOREGOING WRITING HAVE ACKNOWLEDGED THE SAME BEFORE ME IN MY COUNTY AND STATE AFORESAID.

GIVEN UNDER MY HAND THIS 12 DAY OF June 1988

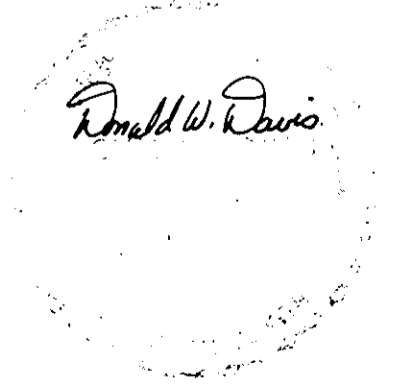
[Signature]
 NOTARY PUBLIC

MY COMMISSION EXPIRES June 11, 1990

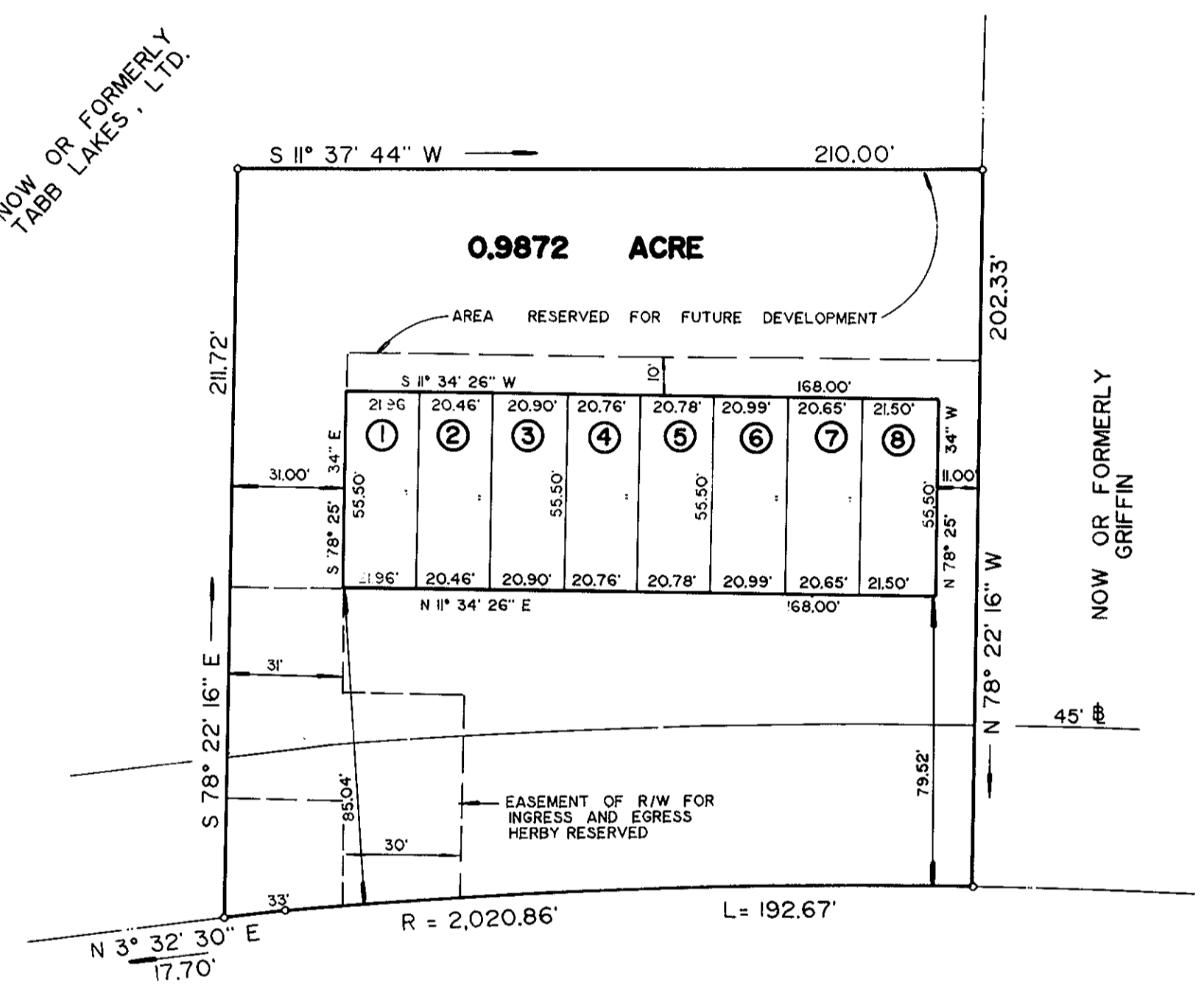
TO THE BEST OF MY KNOWLEDGE AND BELIEF, ALL THE REQUIREMENTS AS SET FORTH IN THE ORDINANCE FOR APPROVING PLATS OF SUBDIVISION IN THE COUNTY OF YORK, VIRGINIA HAVE BEEN COMPLIED WITH INCLUDING A CLOSURE OF NOT LESS THAN 1' / 10,000'.

THIS IS TO CERTIFY THAT THE LAND EMBRACED IN THIS SUBDIVISION IS THE NAME OF 17 ASSOCIATES, A VIRGINIA GENERAL PARTNERSHIP AND WAS ACQUIRED FROM JENNINGS VINES AND AGNES C. VINES BY DEED DATED 25 AUGUST 1986, AND DULY RECORDED IN THE CLERKS OFFICE OF THE CIRCUIT COURT OF THE COUNTY OF YORK, VIRGINIA IN DEED BOOK 452, PAGE 126. I CERTIFY THAT MONUMENTS AS SHOWN ON THIS PLAT WILL BE SET ON OR BEFORE SEPTEMBER 30, 1988.

[Signature]
 DONALD W. DAVIS C.L.S.



NOW OR FORMERLY TABB LAKES, LTD.



NOW OR FORMERLY GRIFFIN

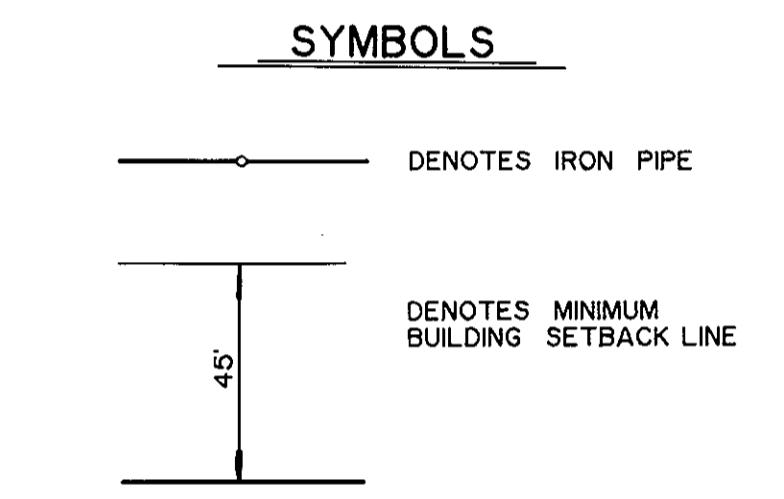
GEORGE WASHINGTON MEMORIAL HIGHWAY
 U.S. ROUTE 17
 (160' R / W)

LOT AREA = 0.9872 ACRE

I CERTIFY THAT THIS PLAN IS ACCURATE AND COMPLIES WITH THE PROVISIONS OF SECTION 55 - 79.58 (b) OF THE CODE OF VIRGINIA OF 1950 AS AMMENDED AND ALL UNITS SHOWN HEREON HAVE BEEN COMPLETED.

[Signature]
 DONALD W. DAVIS C.L.S.

CURVE DATA
 R = 2,020.86'
 Δ = 5° 27' 45"
 L = 192.67'
 T = 96.41'
 CH. = 192.60'
 CH. BRG. = N 9° 34' 33" E



[Signature]
 JUNE 15, 1988

STATE OF VIRGINIA
 COUNTY OF YORK
 IN THE CLERKS OFFICE OF THE CIRCUIT COURT FOR THE COUNTY OF YORK THE 15th DAY June 1988, THIS MAP WAS PRESENTED AND ADMITTED TO RECORD AS THE LAW DIRECTS IN PLAT BOOK 10 PAGE 233

TESTE : *[Signature]*
 BY : *[Signature]*