

THE UNDERSIGNED CERTIFIES THAT THIS PLAN IS ACCURATE AND COMPLIES WITH THE PROVISIONS OF THE CODE OF VIRGINIA SECTION 55-79.58 (b) AND ALL UNITS DEPICTED HEREON HAVE BEEN SUBSTANTIALLY COMPLETED.

NOTES

- 1. ALL BUILDING DIMENSIONS SHOWN HEREON ARE EXTERIOR DIMENSIONS AND ARE IN FEET.

STATE OF VIRGINIA

COUNTY OF YORK

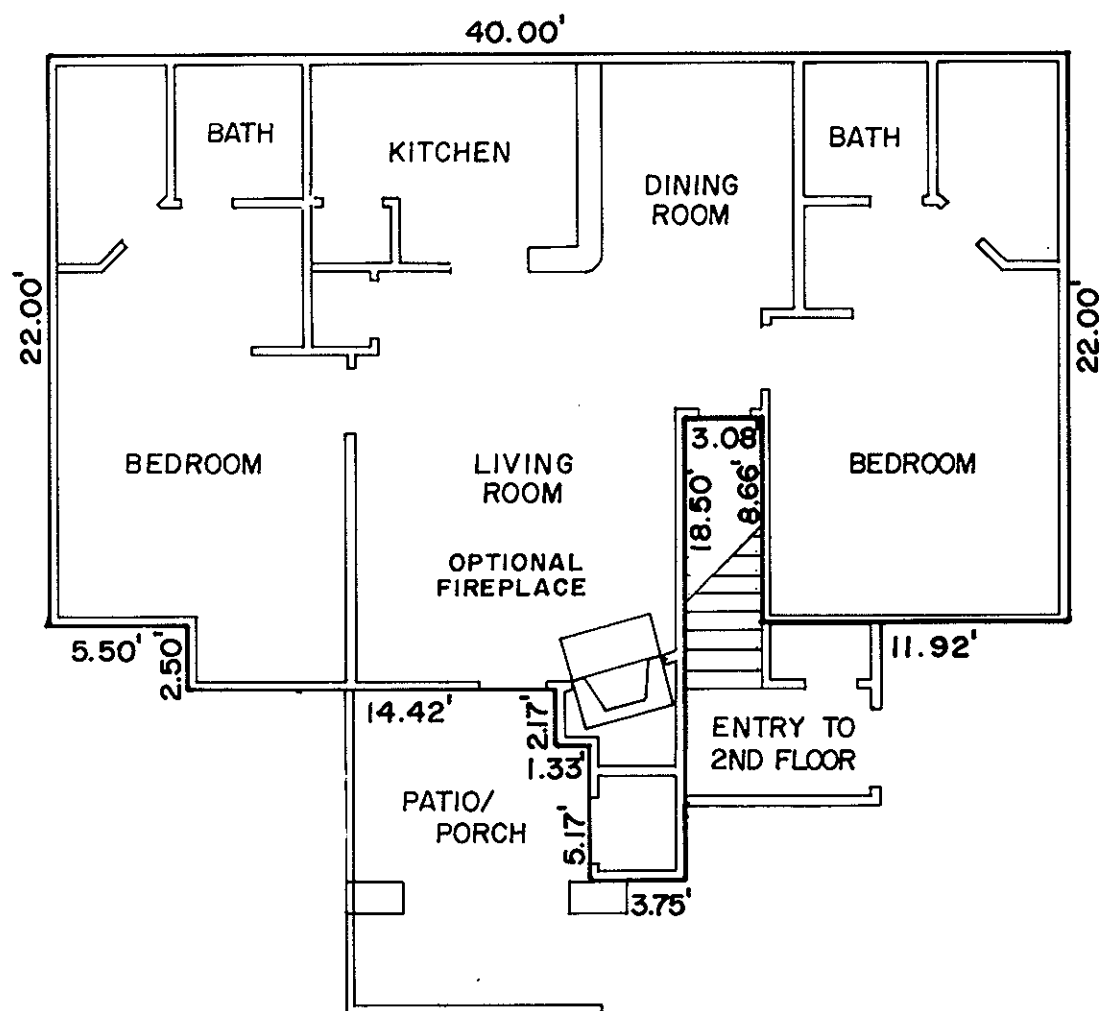
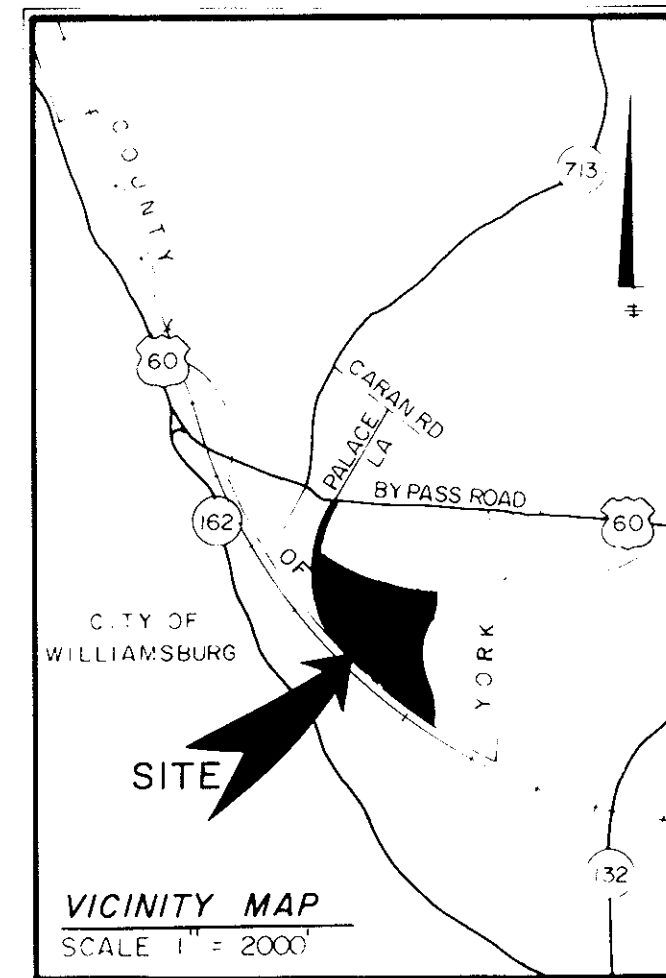
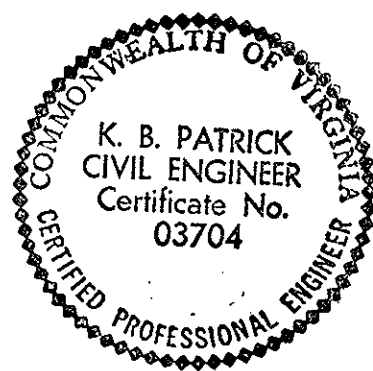
IN THE CLERK'S OFFICE OF THE CIRCUIT COURT FOR THE COUNTY OF YORK THE 30<sup>th</sup> DAY OF June, 1988 THIS MAP WAS PRESENTED AND ADMITTED TO RECORD AS THE LAW DIRECTS IN PLAT BOOK 10, PAGE 539.

TESTE: EDITH M. ELLIOTT, CLERK  
CLERK

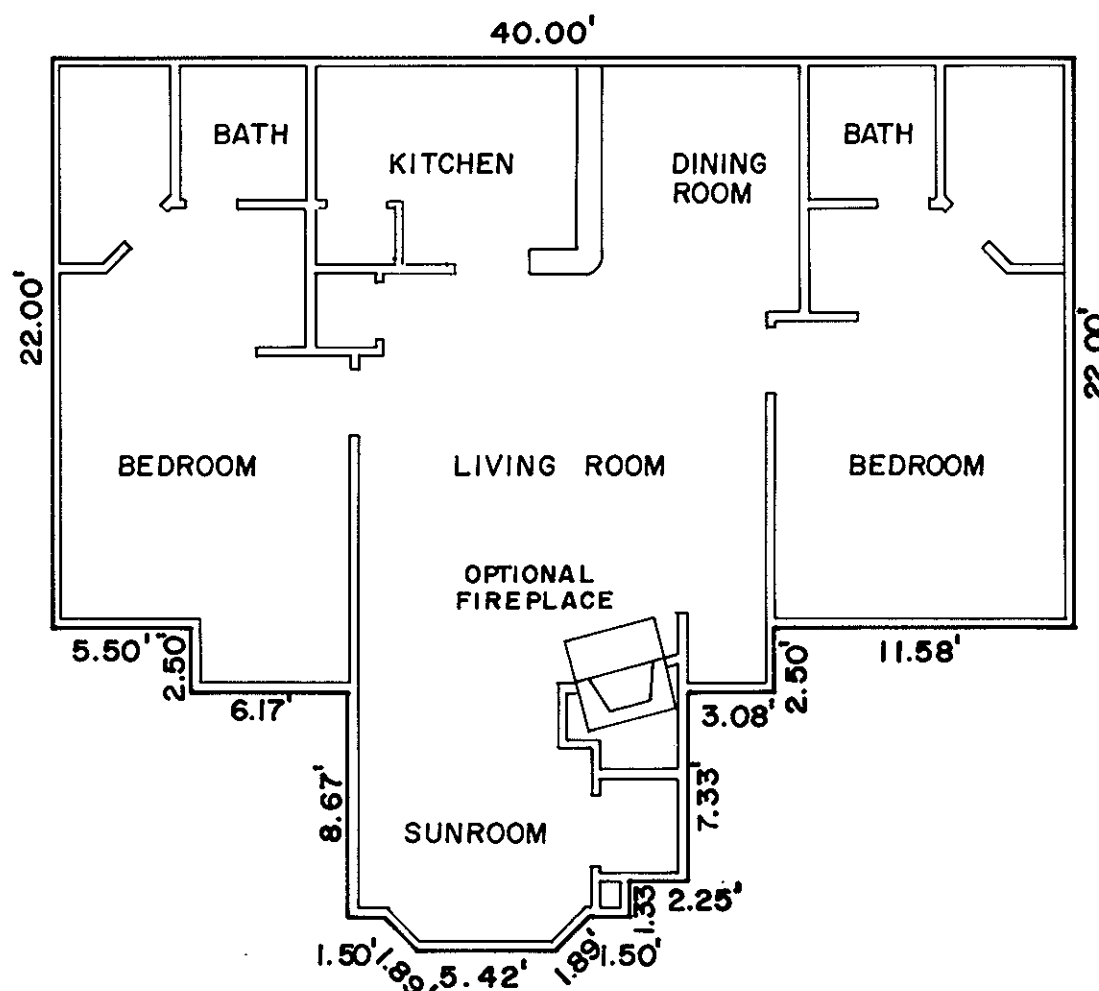
BY: *[Signature]*

3:12

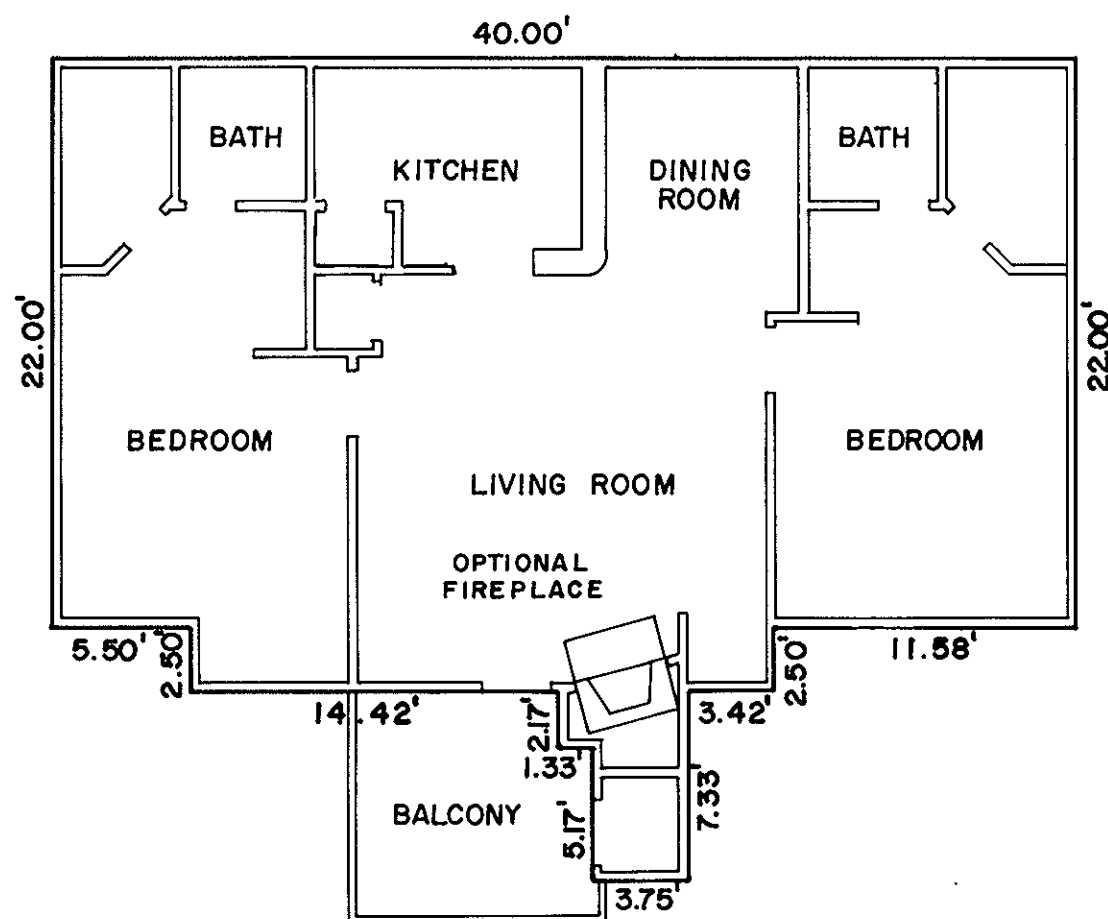
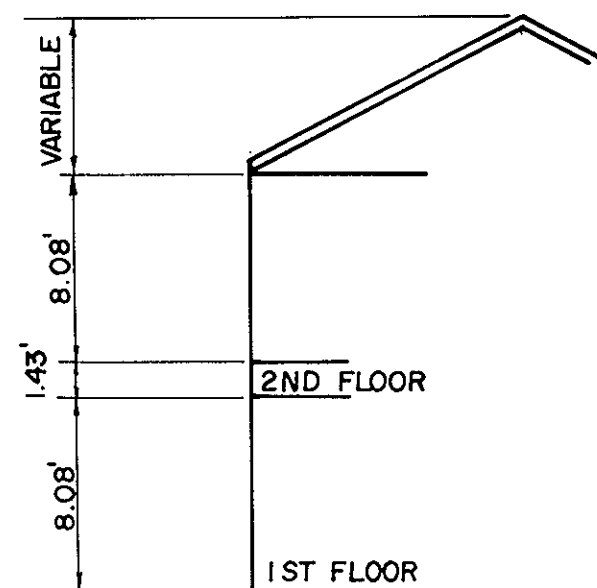
SIGNED: *Kenton B. Patrick* DATE: 5/16/88  
KENTON B. PATRICK, P.E.



MODEL D - TYPICAL UNITS A,B,C,D,E&F  
1ST FLOOR



MODEL D - TYPICAL UNITS H, J & L  
2ND FLOOR  
W/ SUNROOM



MODEL D - TYPICAL UNITS G, I & K  
2ND FLOOR  
W/ BALCONY

Exhibit C  
SHEET 2 OF 4  
SUPPLEMENTAL PLAN OF  
WILLIAMSBURG COMMONS CONDOMINIUMS  
FOR  
WILLIAMSBURG COMMONS, INC.,  
A VIRGINIA CORPORATION  
BRUTON DISTRICT COUNTY OF YORK, VIRGINIA  
SCALE: 1/8"=1'-0" JANUARY 15, 1988



THE SIRINE GROUP, LTD.  
SURVEYORS • ENGINEERS • PLANNERS  
P O BOX 450, ROUTE 17  
WHITE MARSH, VIRGINIA  
23143