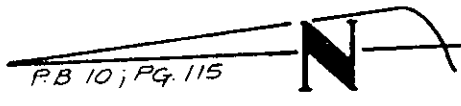


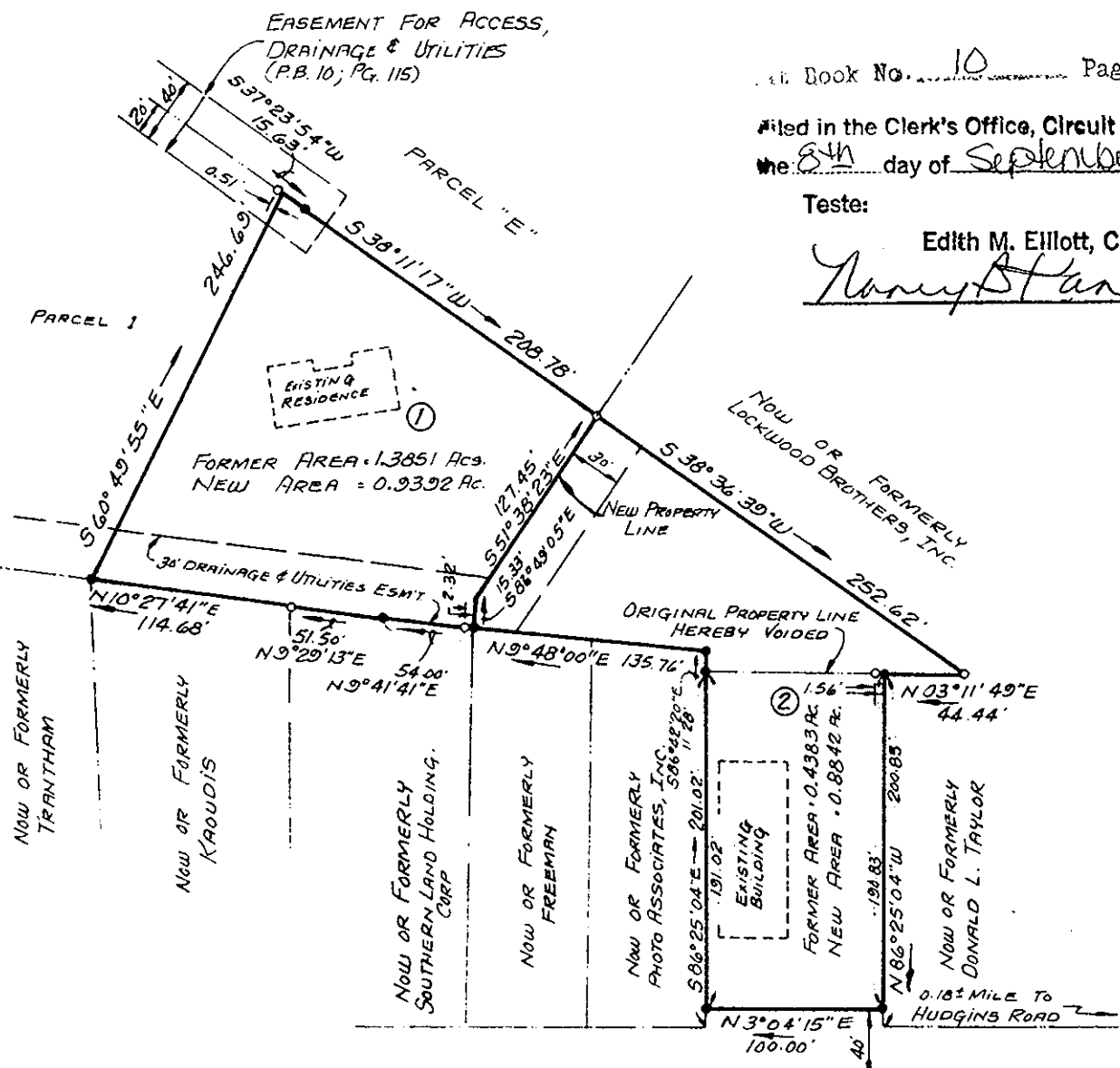
NOTE: DATUM SHOWN HEREON TAKEN FROM PLAT ENTITLED PLAT OF THE PROPERTY OF BETTY JEAN W. ULISSE, JOHN WAYNE OAKLEY & YOLANDA M. OAKLEY - LOCATED ON POQUOSON AVE. - CITY OF POQUOSON, VA. RECORDED IN PLAT BOOK 10; PAGE 115.



Plat Book No. 10 Page 574

Filed in the Clerk's Office, Circuit Court, York Co., Va. the 8th day of September 1988

Teste:  
Edith M. Elliott, Clerk  
*Nancy Stephens*, D.C.

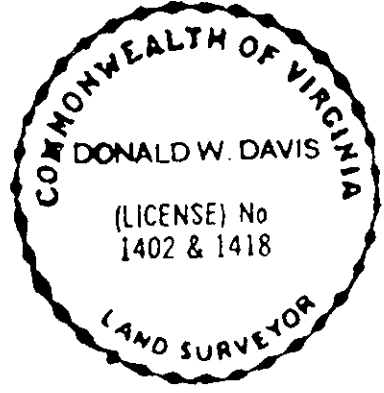


**WYTHE CREEK ROAD**

LOT AREA = 1.8234 ACRES

REFERENCES: P.B. 10 ; Pg. 115  
D.B. 337; Pg. 727

- SYMBOLS:**
- PIPE FOUND
  - PIPE SET
  - ROD FOUND
  - CONC. MONUMENT



*Donald W. Davis* JOB LOCATION WYTHE CREEK ROAD

HEREBY CERTIFY THAT THE SURVEY REPRESENTED BY THIS PLAT WAS MADE BY ME ON THIS DATE AND IS CORRECT TO THE BEST OF MY KNOWLEDGE AND BELIEF THERE ARE NO ENCROACHMENTS OF BUILDINGS UNLESS SHOWN HEREON.

**BOUNDARY LINE ADJUSTMENT PLAT**  
 BETWEEN THE PROPERTIES OF  
**WILLIAM T. & TAMAR U. FORREST**  
 AND  
**ROBERT C. BUNTING GENERAL CONTRACTOR, INC.**  
 CITY OF POQUOSON, VA.

DAVIS & ASSOCIATES  
 SURVEYORS & PLANNERS  
 YORK COUNTY, VIRGINIA