

THE UNDERSIGNED CERTIFIES THAT THIS PLAN IS ACCURATE AND COMPLIES WITH THE PROVISIONS OF THE CODE OF VIRGINIA SECTION 55-79.58 (b) AND ALL UNITS DEPICTED HEREON HAVE BEEN SUBSTANTIALLY COMPLETED.

NOTES

- 1. ALL BUILDING DIMENSIONS SHOWN HEREON ARE EXTERIOR DIMENSIONS AND ARE IN FEET.

STATE OF VIRGINIA  
COUNTY OF YORK

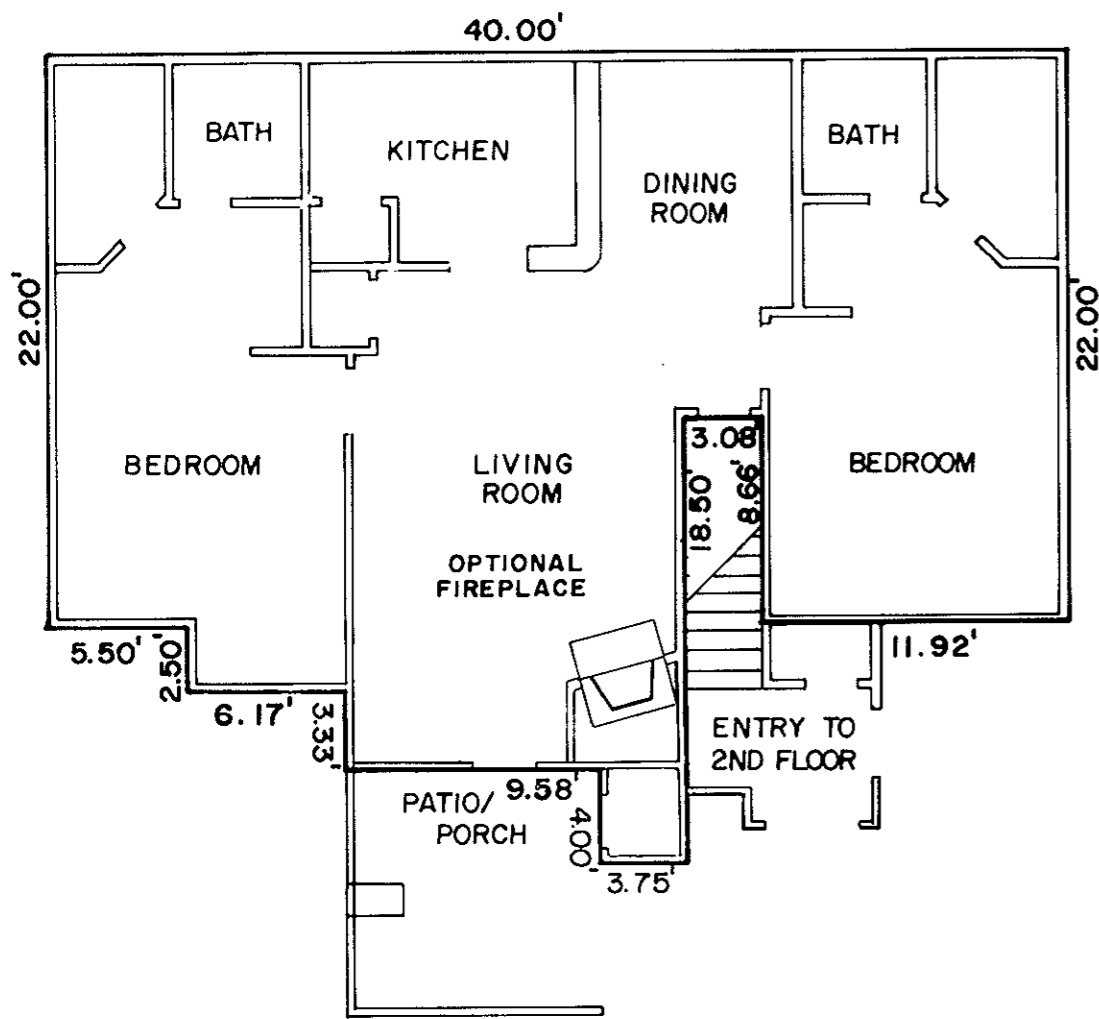
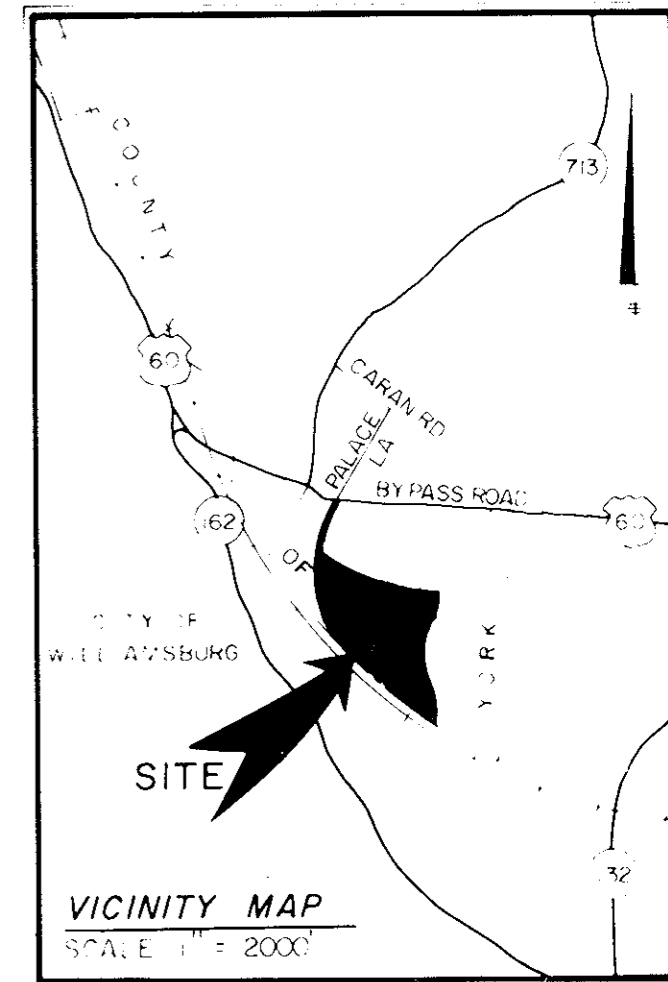
IN THE CLERK'S OFFICE OF THE CIRCUIT COURT FOR THE COUNTY OF YORK THE 26th DAY OF Sept., 1988 THIS MAP WAS PRESENTED AND ADMITTED TO RECORD AS THE LAW DIRECTS IN PLAT BOOK 10, PAGE 50.

SIGNED: Kenton B. Patrick DATE: 9/18/88  
KENTON B. PATRICK, P.E.

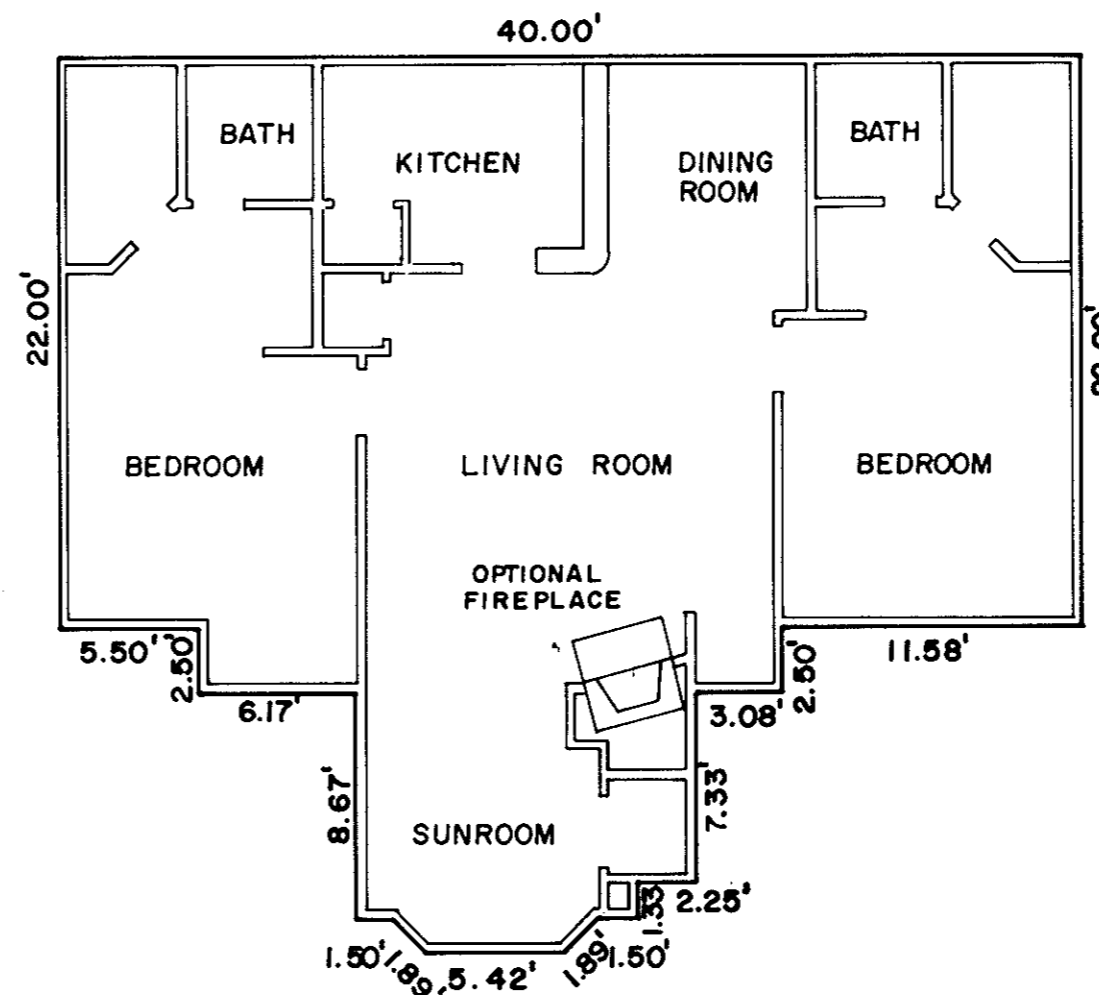


TESTE: EDWIN M. ELLIOTT, CLERK  
CLERK

BY Innocent S. Benyume



**MODEL D - TYPICAL UNITS A,B,C,D,E&F**  
1ST FLOOR



**MODEL D - TYPICAL UNITS G,H,I,J,K&L**  
2ND FLOOR  
W/ SUNROOM

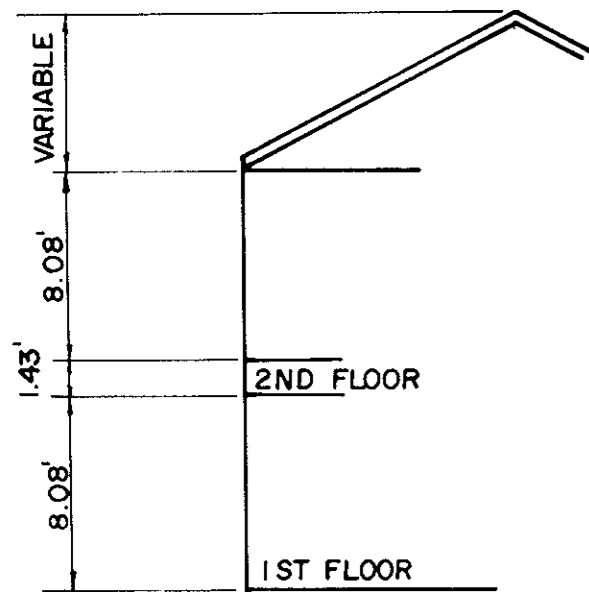


Exhibit E  
PHASE IV  
SHEET 2 OF 4  
PLAN OF  
**WILLIAMSBURG COMMONS CONDOMINIUMS**  
FOR  
**WILLIAMSBURG COMMONS, INC.,**  
A VIRGINIA CORPORATION  
BRUTON DISTRICT COUNTY OF YORK, VIRGINIA  
SCALE: 1/8"=1'-0" JUNE 7, 1988



THE SIRINE GROUP, LTD.  
SURVEYORS • ENGINEERS • PLANNERS  
P.O. BOX 450, ROUTE 7  
WHITE MARSH, VA 23182