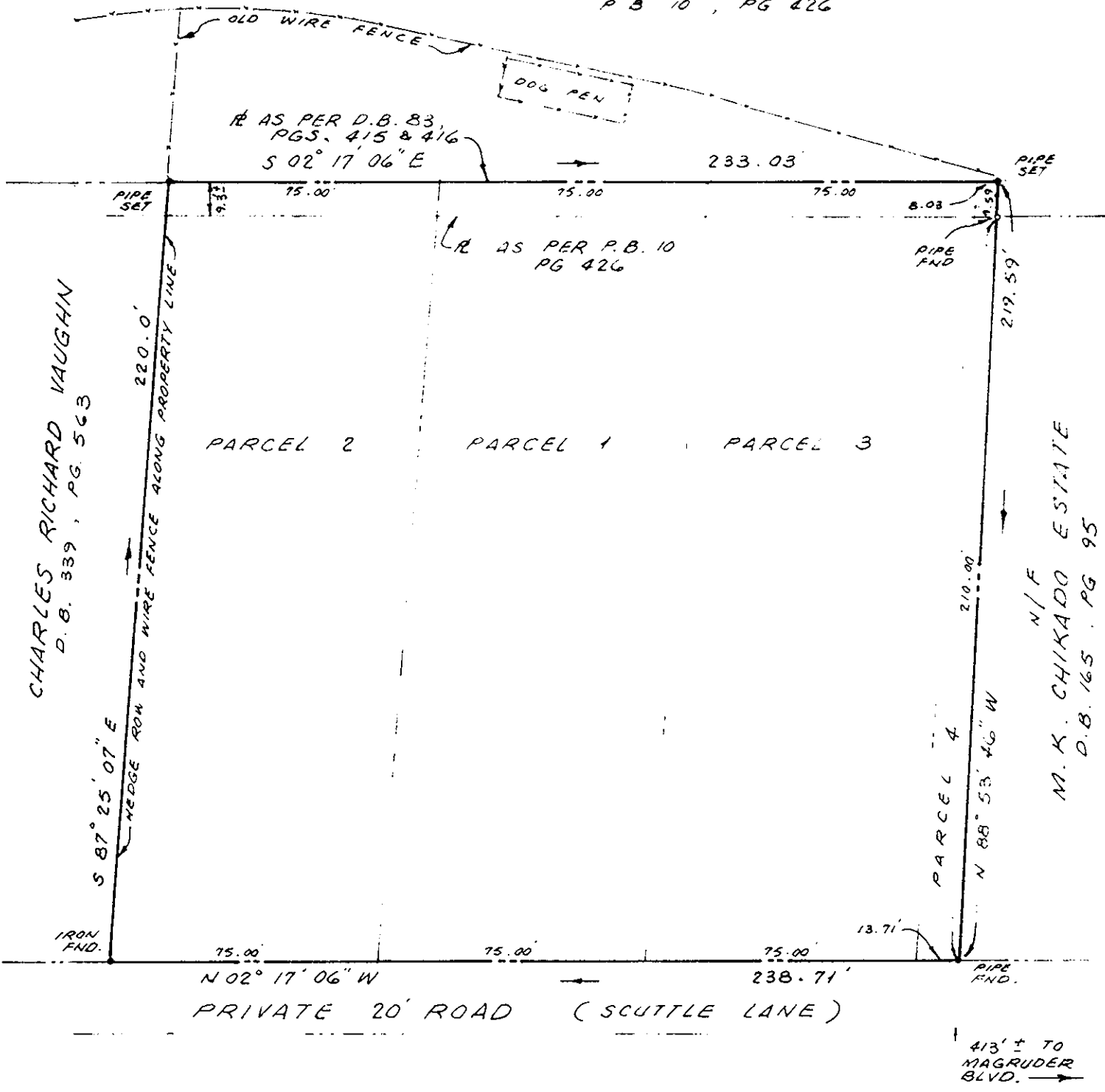


NORTH

MILL CROSSING

P.B. 10, PG. 426



CHARLES RICHARD VAUGHN
D.B. 339, PG. 563

M. K. CHIKADO ESTATE
N/F
D.B. 165, PG. 95

Filed in the Clerk's Office, Circuit Court, York Co., Va.
the 10th day of November 1988

REFERENCE: D.B. 83, PG. 415, 416
#122 SCUTTLE LANE

Teste: *Edith M. Elliott*
Edith M. Elliott, Clerk
Carol Drosselmeier D.C.

PLAT OF THE PROPERTY OF C. E. GUILLIAMS
PARCEL OF LAND CONTAINING 51,705 SQ. FT. ± OR 1.1870 ACRES ± LOCATED ON SCUTTLE LANE COUNTY OF YORK, VIRGINIA
JOHNSON • BAIRD AND ASSOCIATES CIVIL ENGINEER AND LAND SURVEYORS HAMPTON, VIRGINIA
SCALE: 1" = 40'
DATE: DEC. 23, 1987 FILE NO 87-453

