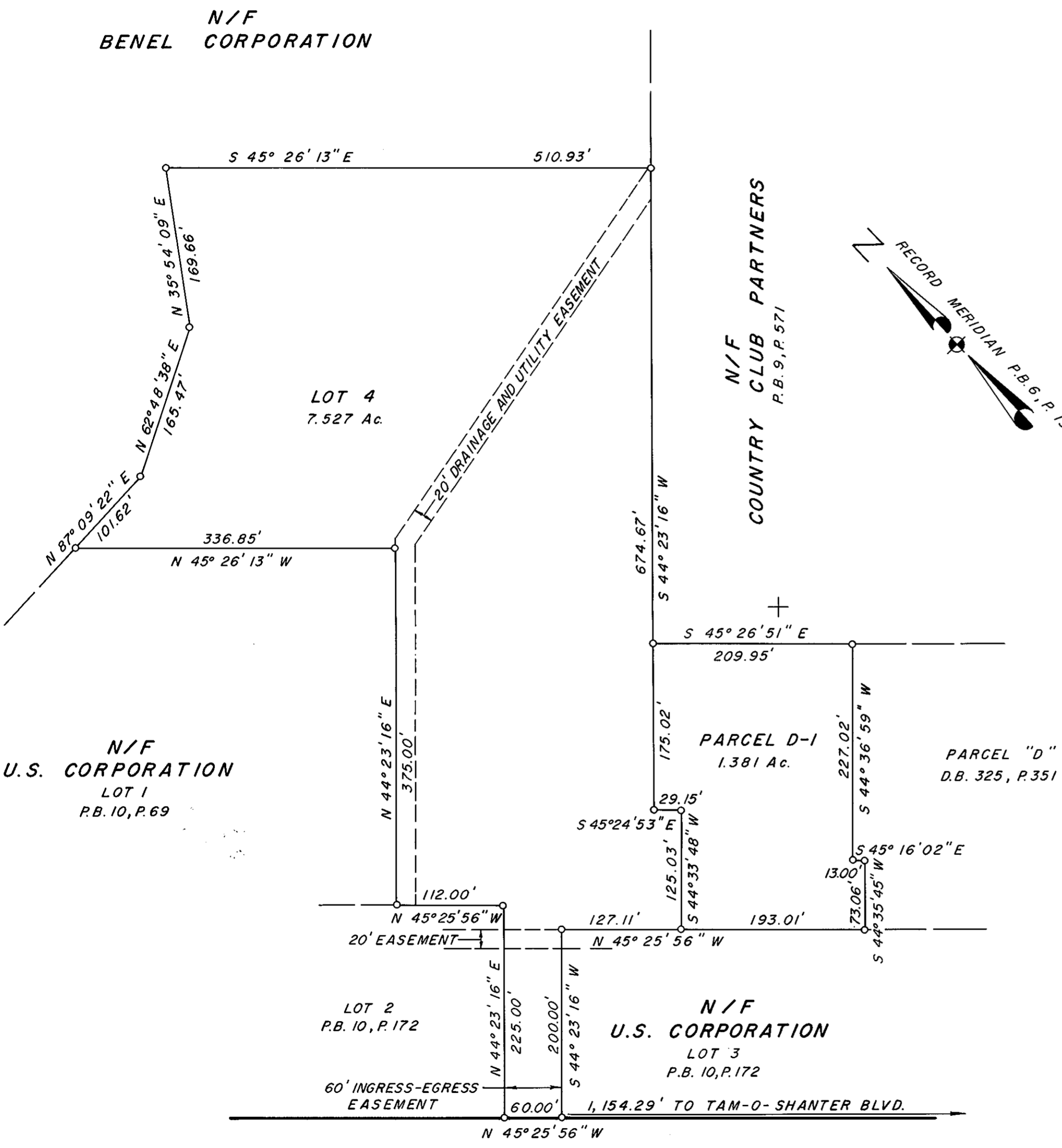
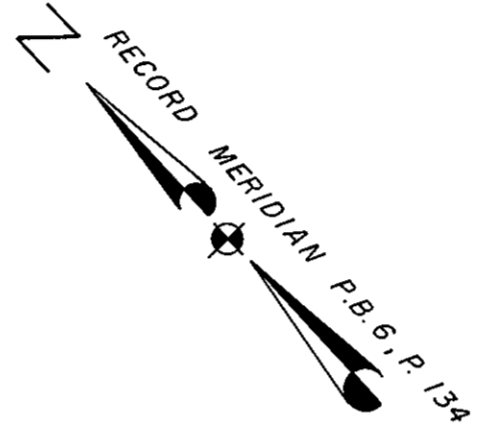
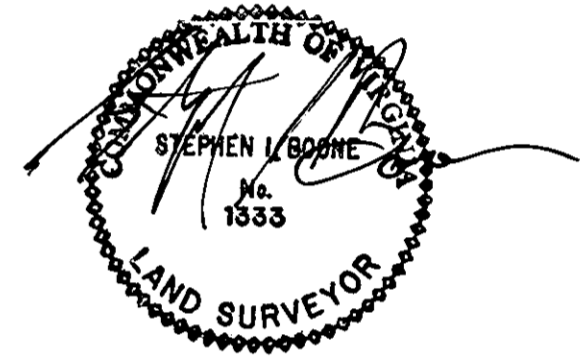


VICINITY MAP  
SCALE: 1" = 2000'

I HEREBY CERTIFY THAT THIS BOUNDARY SURVEY, TO THE BEST OF MY KNOWLEDGE AND BELIEF, IS CORRECT AND COMPLIES WITH THE MINIMUM PROCEDURES AND STANDARDS ESTABLISHED BY THE VIRGINIA STATE BOARD OF ARCHITECTS, PROFESSIONAL ENGINEERS, LAND SURVEYORS, AND CERTIFIED LANDSCAPE ARCHITECTS.



N/F  
U.S. CORPORATION  
LOT 1  
P.B. 10, P. 69

LOT 2  
P.B. 10, P. 172

N/F  
U.S. CORPORATION  
LOT 3  
P.B. 10, P. 172

PARCEL "D"  
D.B. 325, P. 351

at Book No. 10 Page 621

Filed in the Clerk's Office, Circuit Court, York Co., Va.  
the 6th day of December 1988

Teste:  
Edith M. Elliott, C.M.  
*James S. Barymore, Jr.*

**BOUNDARY SURVEY**

OF  
LOT 4  
SUBDIVISION OF THE PROPERTY  
U.S. CORPORATION  
P.B. 10, P. 172  
AND  
PARCEL D-1  
PLAT OF THE PROPERTY OF  
ROSEMONT ASSOCIATES  
D.B. 325, P. 351  
BRUTON MAGISTERIAL DISTRICT, YORK COUNTY, VIRGINIA

**MERRIMAC (140' R/W) TRAIL**  
ROUTE 143

SCALE: 1" = 100'

DATE: NOVEMBER 30, 1988

STEPHEN I. BOONE & ASSOCIATES, P.C.  
LAND SURVEYORS  
PORTSMOUTH, VIRGINIA