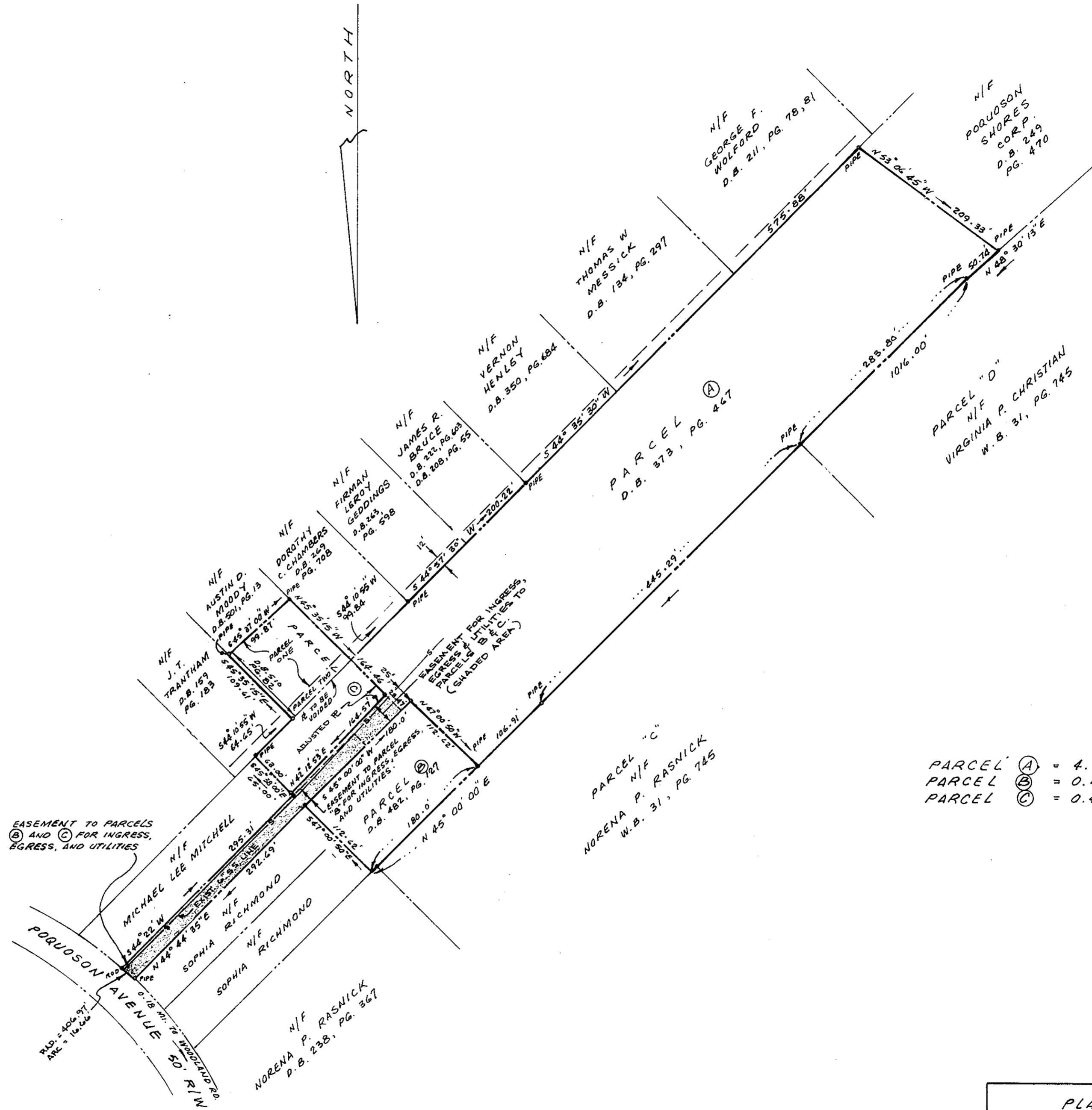


REFERENCES FOR "PARCEL ONE"
AND "PARCEL TWO":
D.B. 510, PG. 82
D.B. 263, PG. 595



PARCEL (A) = 4.285 AC. ±
PARCEL (B) = 0.465 AC. ±
PARCEL (C) = 0.476 AC. ± OR 20,717 SQ. FT. ±



Plat Book No. 10 Page 630

Filed in the Clerk's Office, Circuit Court, York Co., VA
the 22nd day of December 1988

Edith M. Elliott, Clerk
Karen D. Kelly-Waters D.C.

PLAT SHOWING PARCEL (C)
A BOUNDARY LINE ADJUSTMENT
BETWEEN THE PROPERTIES OF
B.G. & PEARL L. TIGNOR
AND
BARRY L. & MALANIE B. TIGNOR
CITY OF POQUOSON, VIRGINIA

JOHNSON · BAIRD & ASSOCIATES
CIVIL ENGINEER AND LAND SURVEYORS
1538 WEST QUEEN STREET, HAMPTON, VA

SCALE: 1" = 100' F.B. 879 PG. 68
MARCH 28, 1988 FILE NO. 87-34