

THE UNDERSIGNED CERTIFIES THAT THIS PLAN IS ACCURATE AND COMPLIES WITH THE PROVISIONS OF THE CODE OF VIRGINIA SECTION 55-79.58 (b) AND ALL UNITS DEPICTED HEREON HAVE BEEN SUBSTANTIALLY COMPLETED.

NOTES

- 1. ALL BUILDING DIMENSIONS SHOWN HEREON ARE EXTERIOR DIMENSIONS AND ARE IN FEET.

STATE OF VIRGINIA
COUNTY OF YORK

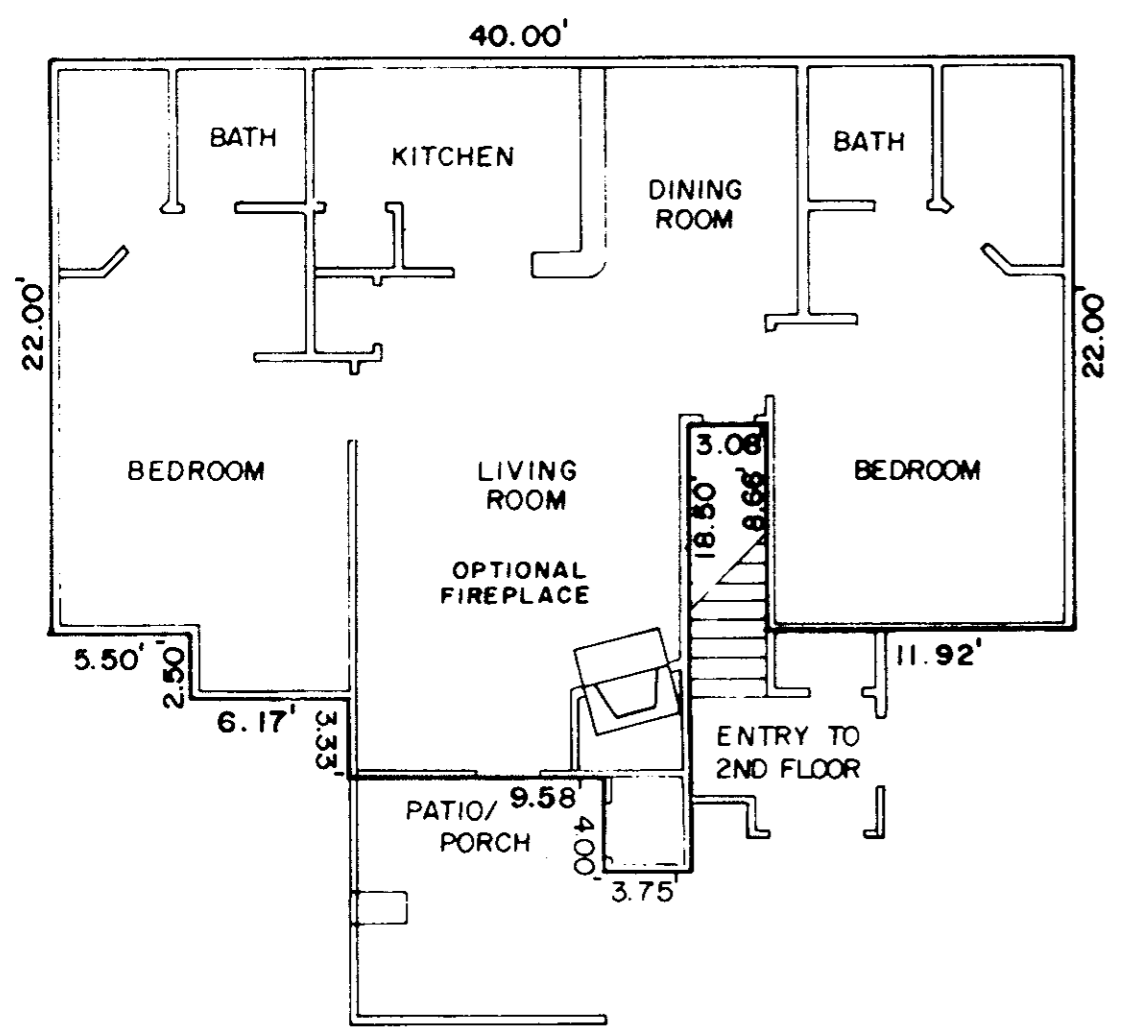
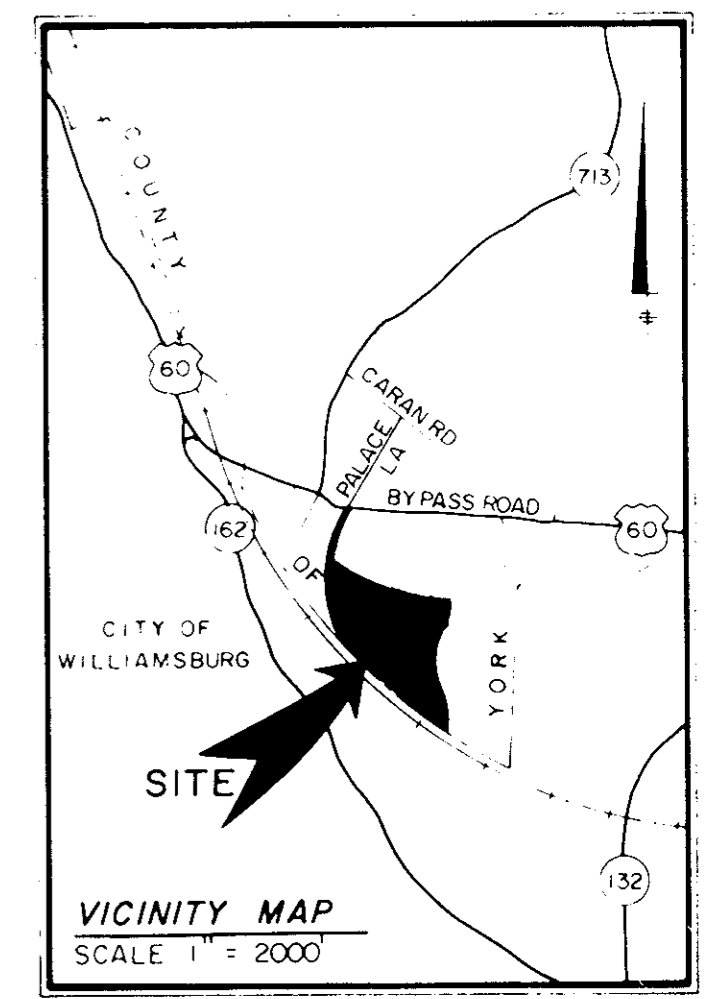
IN THE CLERK'S OFFICE OF THE CIRCUIT COURT FOR THE COUNTY OF YORK THE 21ST DAY OF February, 1988 THIS MAP WAS PRESENTED AND ADMITTED TO RECORD AS THE LAW DIRECTS IN PLAT BOOK 11, PAGE 19.

TESTE: EDITH M. ELLIOTT, CLERK
CLERK 10:03 a.m.

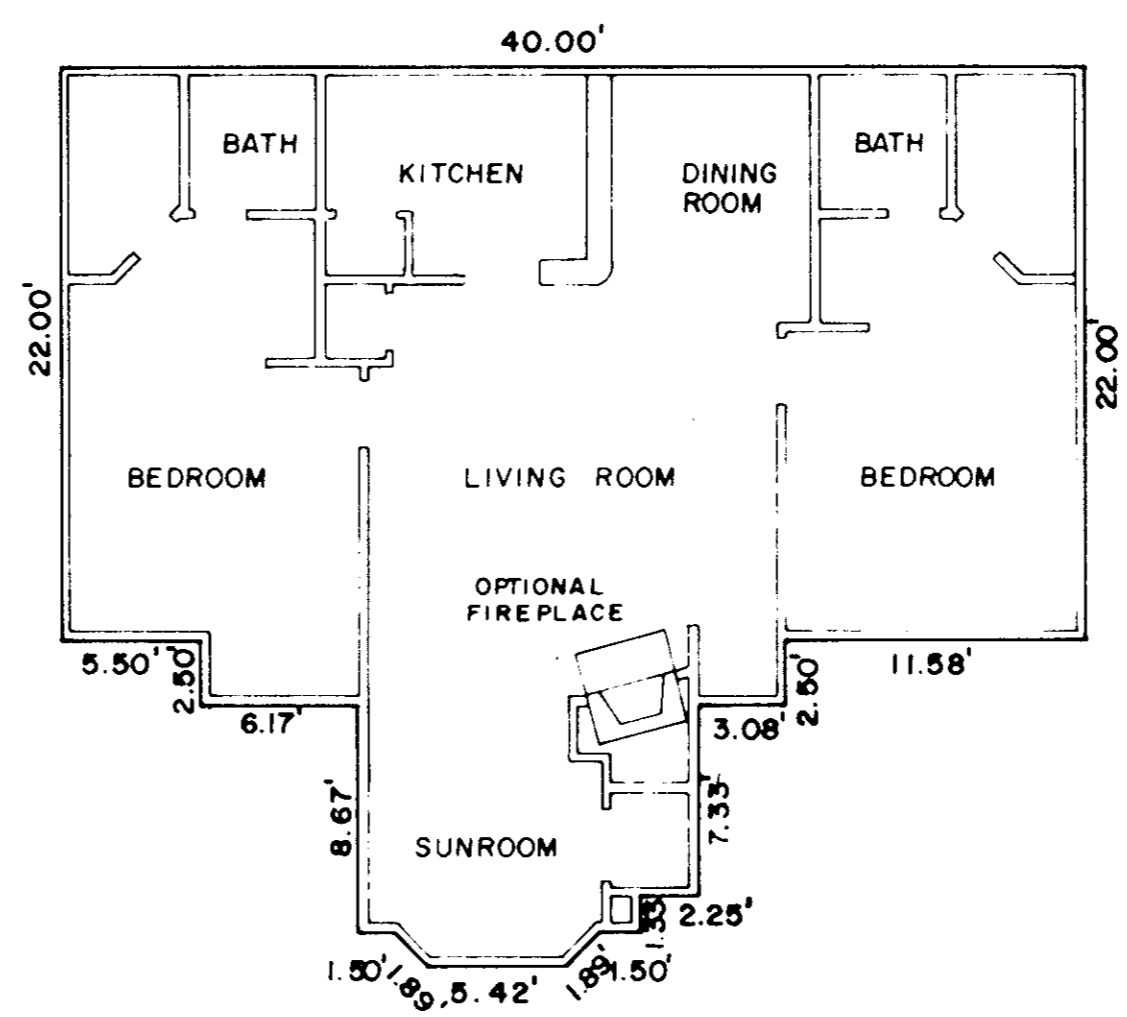
BY: *Nancy Stans, LLC*



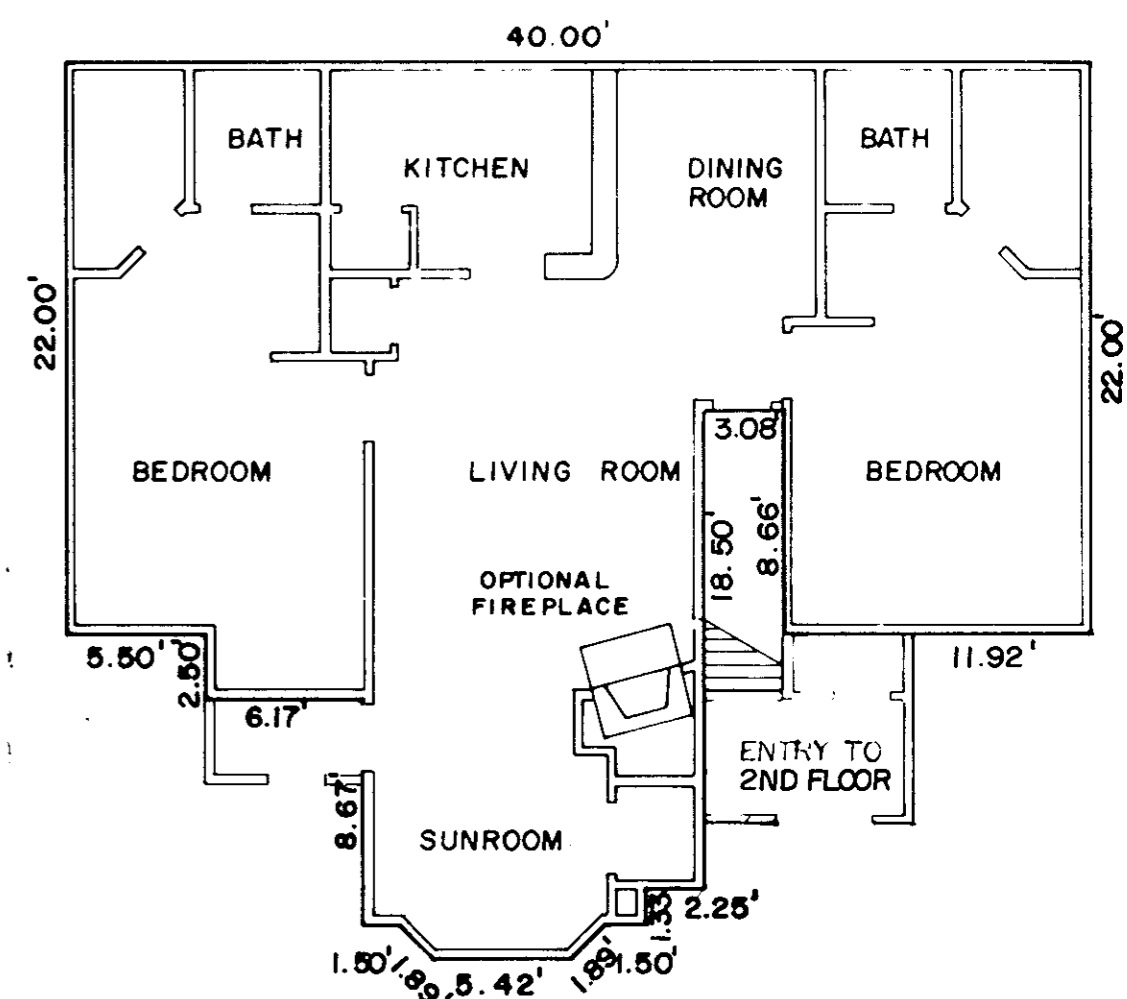
SIGNED: *Kenton B. Patrick* DATE: *11/22/88*
KENTON B. PATRICK, P.E.



MODEL D - TYPICAL UNITS A,C & E
1ST FLOOR



MODEL D - TYPICAL UNITS H, J, K, & L
2ND FLOOR
W/ SUNROOM



MODEL D - TYPICAL UNITS B, D & F

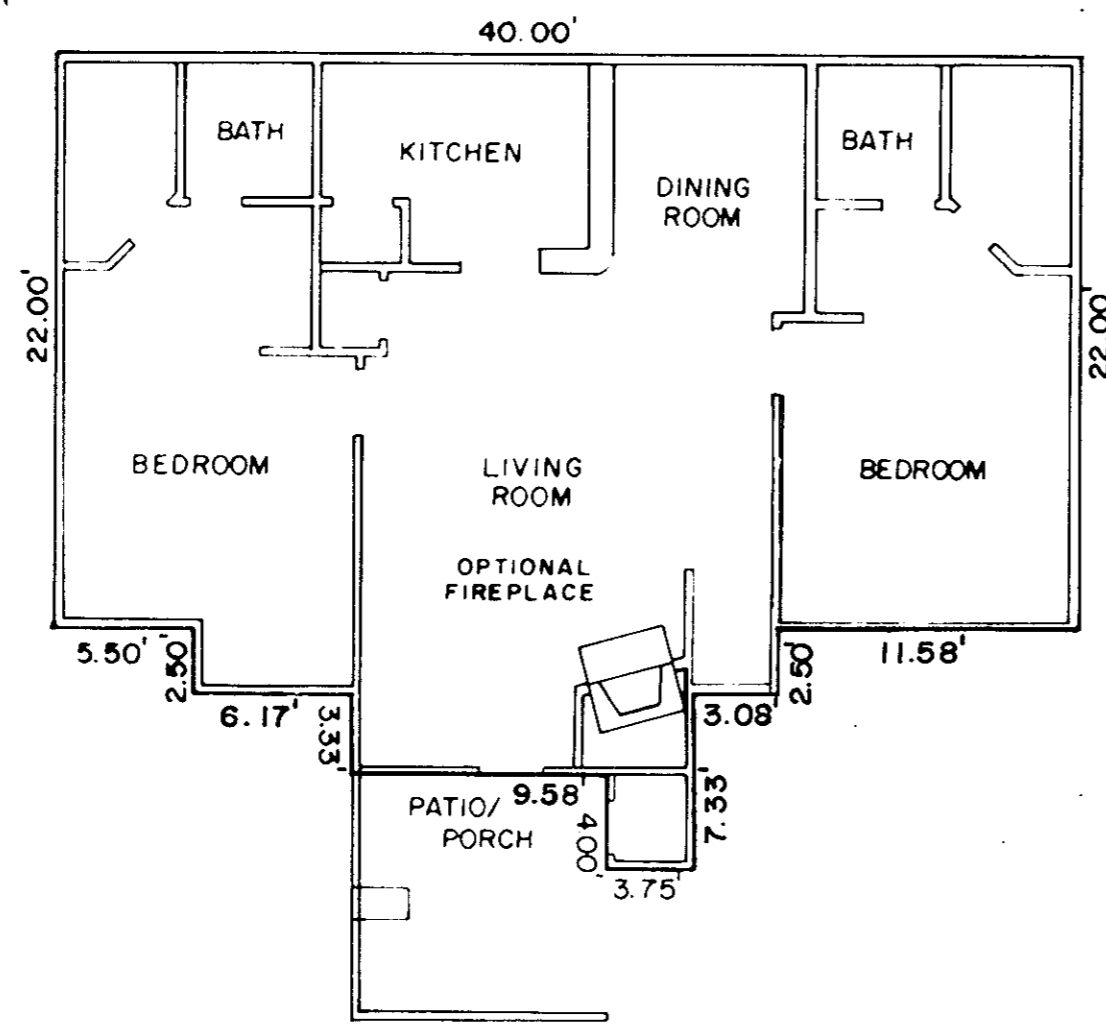
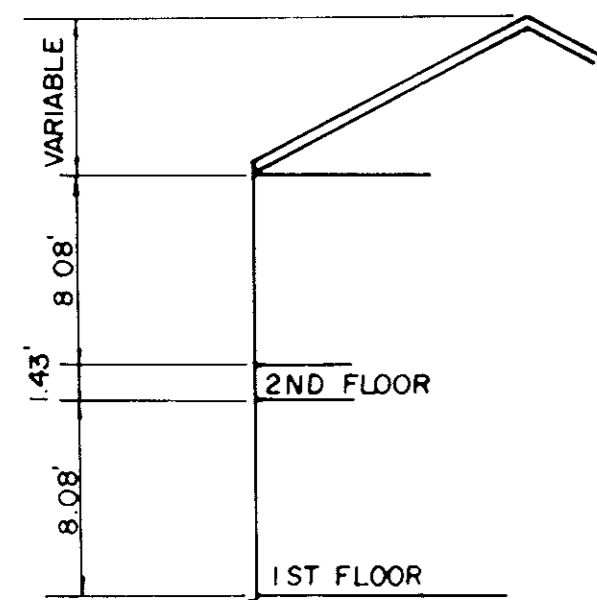
1ST FLOOR
W/ SUNROOM
EXHIBIT H
PHASE VII
SHEET 2 OF 4
PLAT OF

WILLIAMSBURG COMMONS CONDOMINIUMS

FOR
WILLIAMSBURG COMMONS, INC.,
A VIRGINIA CORPORATION
BRUTON DISTRICT COUNTY OF YORK, VIRGINIA
SCALE 1/8" = 1'-0" NOVEMBER 16, 1988



THE SIRINE GROUP, LTD.
SURVEYORS • ENGINEERS • PLANNERS
P.O. BOX 450, ROUTE 17
WHITE MARSH, VIRGINIA
23183



MODEL D - TYPICAL UNITS G & I
2ND FLOOR