

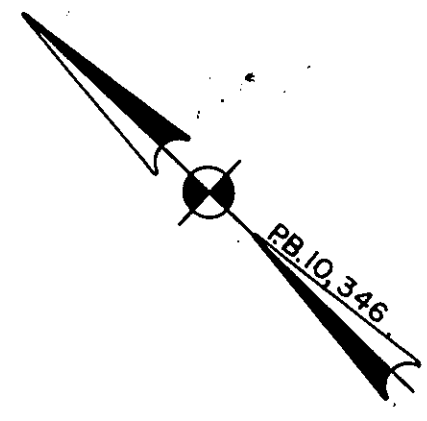
RESUBDIVISION  
OF  
**YORKSHIRE DOWNS**  
PHASE 2, SECTION I  
COUNTY OF YORK, VIRGINIA

**ta**  
**Talbot & Associates, Ltd.**  
Architects, Engineers, Planners, Surveyors, Landscape Architects  
100 Landmark Square, Virginia Beach, Va. 23462  
739 Thimble Shoals Blvd., Suite 1006, Newport News, Va. 23606

SCALE: 1" = 30'  
JANUARY 3, 1989  
SHEET 2 OF 2

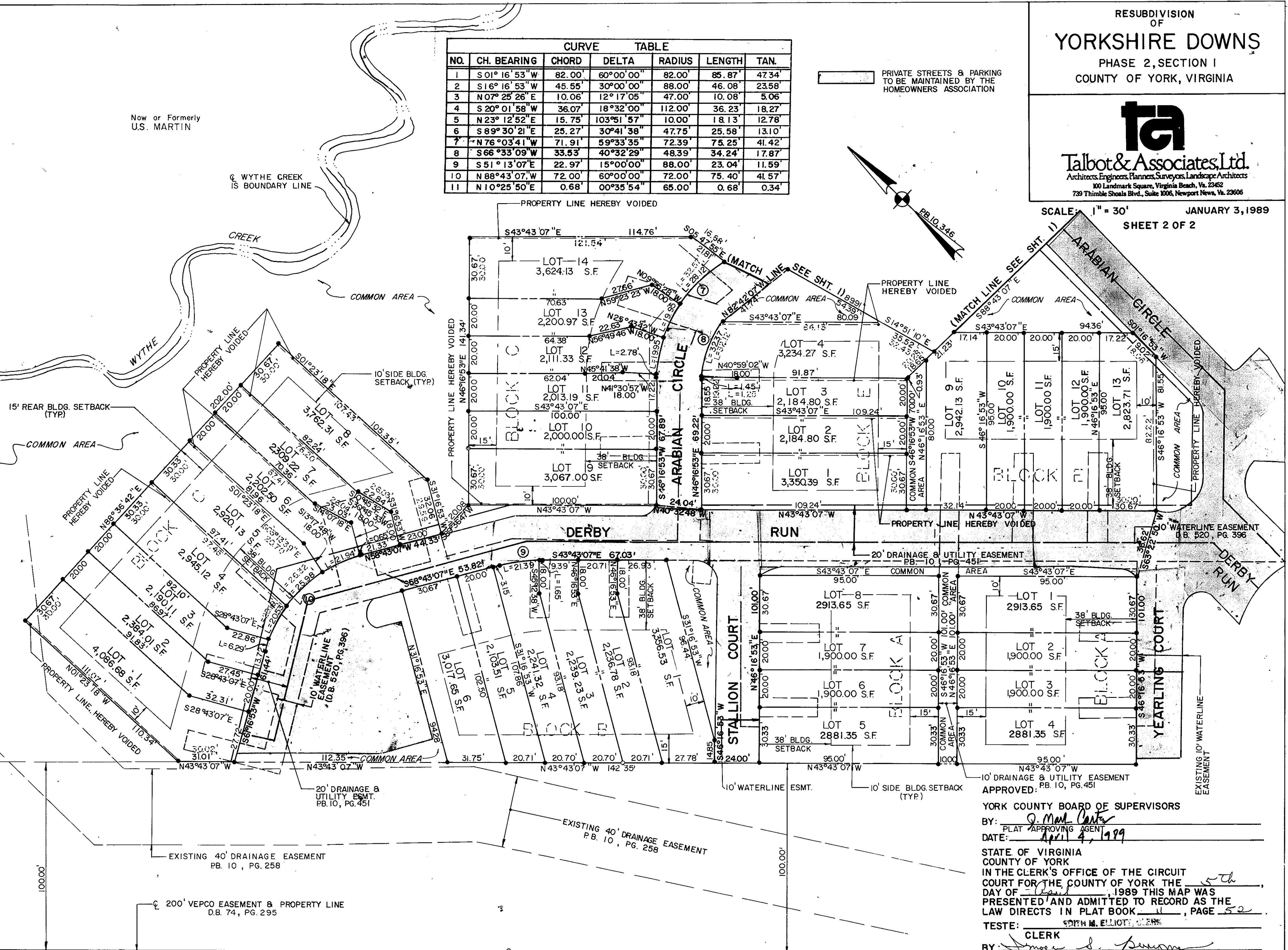
CURVE TABLE						
NO.	CH. BEARING	CHORD	DELTA	RADIUS	LENGTH	TAN.
1	S 01° 16' 53" W	82.00'	60° 00' 00"	82.00'	85.87'	47.34'
2	S 16° 16' 53" W	45.55'	30° 00' 00"	88.00'	46.08'	23.58'
3	N 07° 25' 26" E	10.06'	12° 17' 05"	47.00'	10.08'	5.06'
4	S 20° 01' 58" W	36.07'	18° 32' 00"	112.00'	36.23'	18.27'
5	N 23° 12' 52" E	15.75'	103° 51' 57"	10.00'	18.13'	12.78'
6	S 89° 30' 21" E	25.27'	30° 41' 38"	47.75'	25.58'	13.10'
7	N 76° 03' 41" W	71.91'	59° 33' 35"	72.39'	75.25'	41.42'
8	S 66° 33' 09" W	33.53'	40° 32' 29"	48.39'	34.24'	17.87'
9	S 51° 13' 07" E	22.97'	15° 00' 00"	88.00'	23.04'	11.59'
10	N 88° 43' 07" W	72.00'	60° 00' 00"	72.00'	75.40'	41.57'
11	N 10° 25' 50" E	0.68'	00° 35' 54"	65.00'	0.68'	0.34'

PRIVATE STREETS & PARKING  
TO BE MAINTAINED BY THE  
HOMEOWNERS ASSOCIATION



Now or Formerly  
U.S. MARTIN

WYTHE CREEK  
IS BOUNDARY LINE



15' REAR BLDG. SETBACK (TYP.)

COMMON AREA

10' SIDE BLDG. SETBACK (TYP.)

10' WATERLINE EASEMENT  
(D.B. 520, PG. 396)

20' DRAINAGE & UTILITY ESMT.  
PB. 10, PG. 451

EXISTING 40' DRAINAGE EASEMENT  
PB. 10, PG. 258

200' VEPCO EASEMENT & PROPERTY LINE  
D.B. 74, PG. 295

EXISTING 40' DRAINAGE EASEMENT  
PB. 10, PG. 258

PROPERTY LINE HEREBY VOIDED

(MATCH LINE SEE SHT. 1)  
S 43° 43' 07" E 17.14'

20' DRAINAGE & UTILITY EASEMENT  
PB. 10, PG. 451

10' DRAINAGE & UTILITY EASEMENT  
PB. 10, PG. 451

APPROVED: YORK COUNTY BOARD OF SUPERVISORS

BY: *J. Mark Carter*  
PLAT APPROVING AGENT  
DATE: *April 4, 1989*

STATE OF VIRGINIA  
COUNTY OF YORK  
IN THE CLERK'S OFFICE OF THE CIRCUIT  
COURT FOR THE COUNTY OF YORK THE  
DAY OF *April*, 1989 THIS MAP WAS  
PRESENTED AND ADMITTED TO RECORD AS THE  
LAW DIRECTS IN PLAT BOOK *11*, PAGE *52*

TESTE: *W. M. ELLIOTT, CLERK*  
CLERK  
BY: *James S. ...*