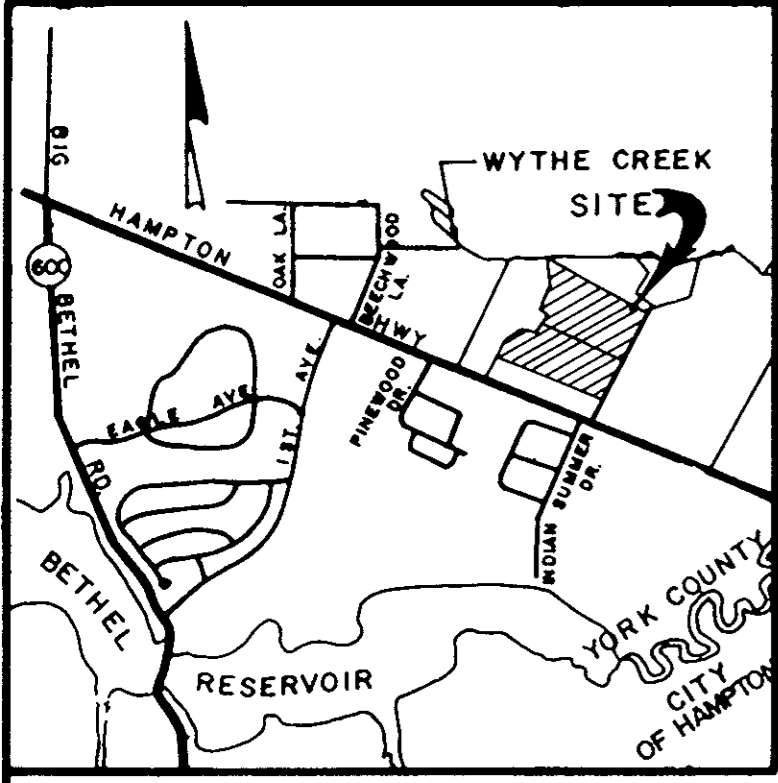


THIS PLAT IS AN EXHIBIT TO THE DECLARATION OF YORKSHIRE DOWNS CONDOMINIUM, DATED MARCH 1, 1989 AND RECORDED IN DEED BOOK \_\_\_\_\_, PAGE \_\_\_\_\_

YORKSHIRE DOWNS CONDOMINIUM PHASE IV LOCATED IN YORK COUNTY, VIRGINIA



SCALE: 1"=50' FEBRUARY 17, 1989 SHEET 1 OF 3



NOW OR FORMERLY CHRISTOPHER YORK ASSOCIATES, L.P. PHASE 2, SECTION 1

TOTAL ACREAGE = 9.960

200' VEPCO EASEMENT D.B. 74, PG. 295

PROPOSED VARIABLE WIDTH DRAINAGE & UTILITY EASEMENT

10' WATERLINE EASEMENT D.B. 532, PG. 166

20' DRAINAGE & UTILITY EASEMENT D.B. 524, PG. 551

10' SPORTS TRAIL EASEMENT PB 10, PG. 596

YORK DOWNS DRIVE (VARIABLE WIDTH R/W)

ADDITIONAL LAND PARCEL IB 1.370 Ac.

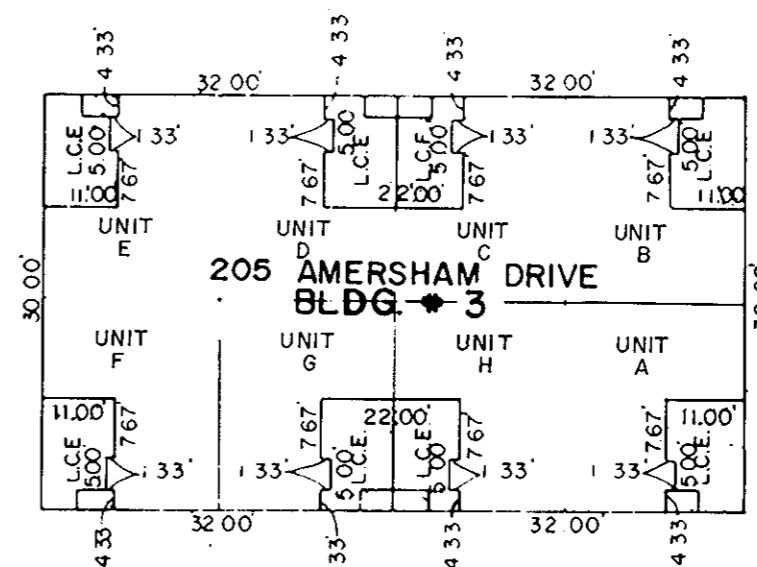
ADDITIONAL LAND PARCEL IA 1.845 Ac.

PHASE III 0.594 Ac.

PHASE IV 0.477 Ac.

PHASE II 0.592 Ac.

PHASE I 0.779 Ac.



ALL UNITS DEPICTED HEREON ARE SAME UNIT TYPE AS SHOWN ON UNIT DIMENSION PLAN

L.C.E. [ ] - LIMITED COMMON ELEMENT

THE PLATTING OF THE LAND HEREON SHOWN IS WITH THE FREE CONSENT AND IN ACCORDANCE WITH THE DESIRE OF THE UNDERSIGNED OWNER. LANDS END ASSOCIATES, A VIRGINIA LIMITED PARTNERSHIP BY P.H.P. ENTERPRISES INC., A VIRGINIA CORPORATION GENERAL PARTNER.

BY: PHP ENTERPRISES INC., GENERAL PARTNER

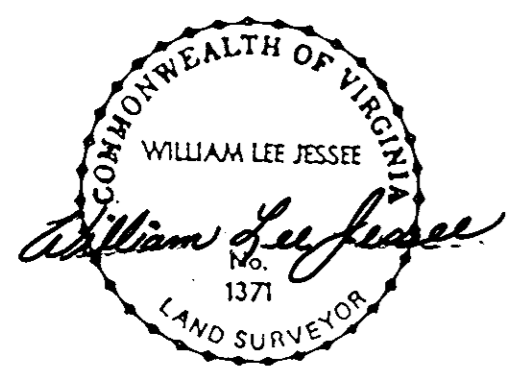
STATE OF VIRGINIA CITY OF Virginia Beach, I, Sherry A. White, A NOTARY PUBLIC IN AND FOR THE CITY AND STATE AFORESAID DO HEREBY CERTIFY THAT THE ABOVE NAMED PERSON WHOSE NAME IS SIGNED TO THE FOREGOING WRITING HAS ACKNOWLEDGED THE SAME BEFORE ME IN MY CITY AND STATE AFORESAID.

GIVEN UNDER MY HAND THIS 2nd DAY OF May 1989.

Sherry A. White NOTARY PUBLIC MY COMMISSION EXPIRES: 10/21/89

TO THE BEST OF MY KNOWLEDGE AND BELIEF, ALL THE REQUIREMENTS AS SET FORTH IN THE ORDINANCE FOR APPROVING PLATS OF SUBDIVISION IN THE COUNTY OF YORK, VIRGINIA HAVE BEEN COMPLIED WITH, INCLUDING A CLOSURE OF NOT LESS THAN 1"/10,000". THIS IS TO CERTIFY THAT THE LAND EMBRACED IN THIS SUBDIVISION IS IN THE NAME OF LANDS END ASSOCIATES, L.P., A VIRGINIA LIMITED PARTNER AND WAS ACQUIRED FROM CHRISTOPHER YORK ASSOCIATES, L.P. BY DEED DATED DEC 9, 1987 AND DULY RECORDED IN THE CLERK'S OFFICE OF THE CIRCUIT COURT OF THE COUNTY OF YORK, VIRGINIA, IN DEED BOOK 506 PAGE 301.

William Lee Jesse LAND SURVEYOR, NO. 1371



I, WILLIAM LEE JESSEE, A DULY REGISTERED SURVEYOR DO HEREBY CERTIFY THAT THIS DRAWING IS ACCURATE (WITHIN NORMAL TOLERANCES) AND COMPLIES WITH SECTION 55-79.58(a) OF THE CONDOMINIUM ACT AND THAT THE UNITS SHOWN HEREON ARE SUBSTANTIALLY COMPLETED IN ACCORDANCE HEREWITH.

William Lee Jesse DATE 5-1-89

THE PROPERTY, AS DEPICTED ON THIS PLAT DOES NOT VIOLATE THE PROVISIONS OF THE YORK COUNTY SUBDIVISION ORDINANCE.

SIGNED: J. Mark Carter DIRECTOR OF PLANNING & COMM. DEV.

DATE: MAY 5, 1989

Deed Book No. 11 Page 161

Filed in the Clerk's Office, Circuit Court, York Co., Va. the 5th day of May 1989 11:25 AM

Teste: Nancy B. King, Clerk Nancy D. Watkins, D.C.