

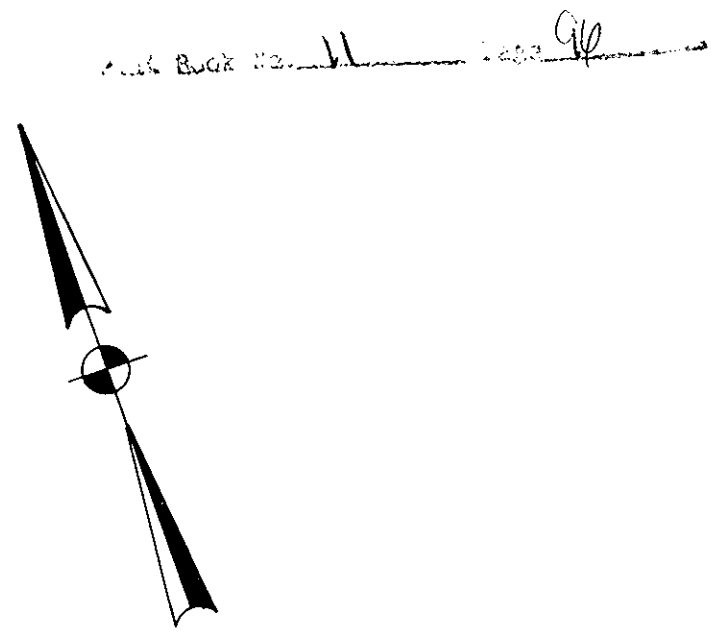
THIS PLAT IS AN EXHIBIT TO THE DECLARATION OF YORKSHIRE DOWNS CONDOMINIUM, DATED MARCH 1, 1988 AND RECORDED IN DEED BOOK _____, PAGE _____.

YORKSHIRE DOWNS
CONDOMINIUM
 PHASE VII
 LOCATED IN
 YORK COUNTY, VIRGINIA

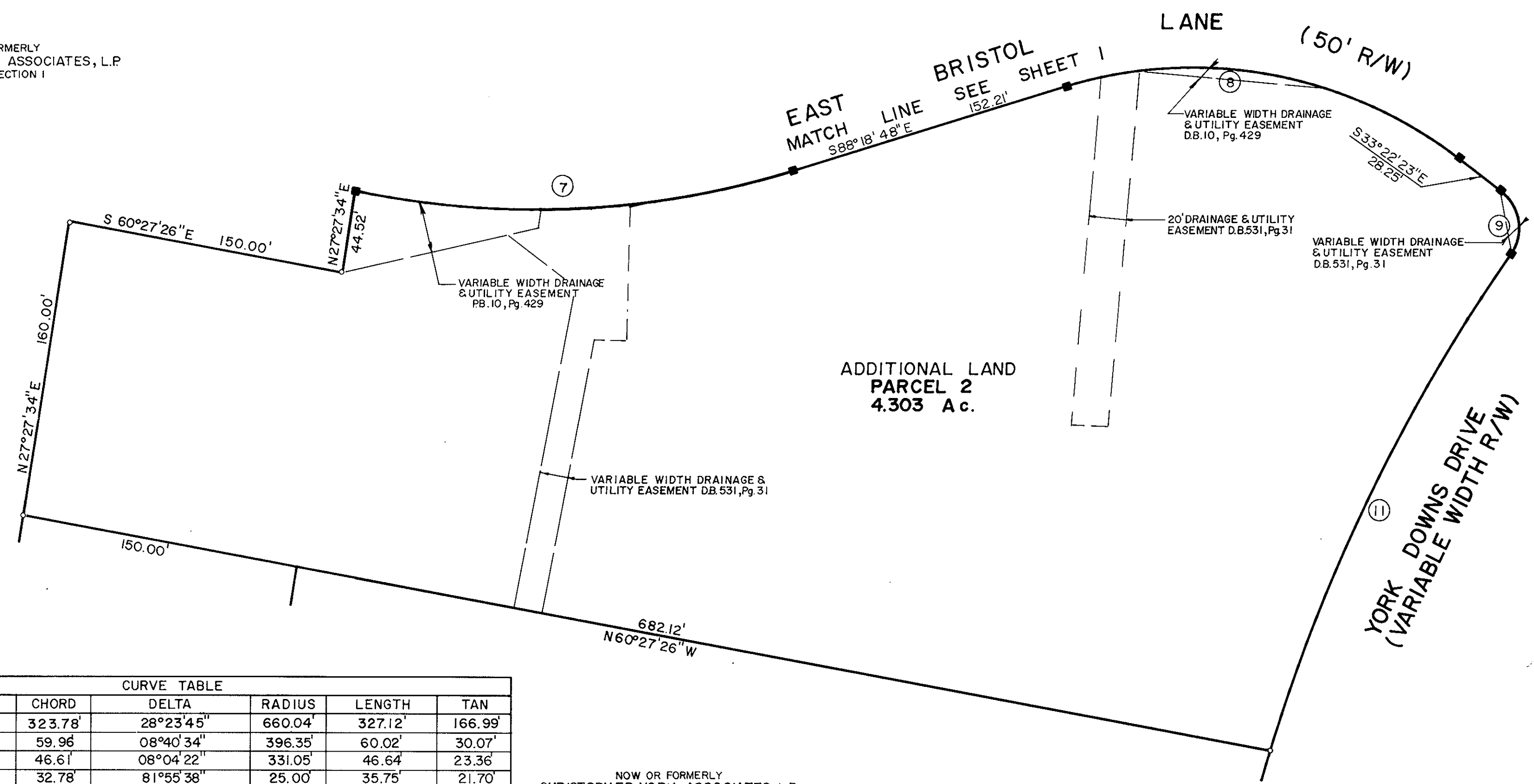


Talbot & Associates, Ltd.
 Architects, Engineers, Planners, Surveyors, Landscape Architects
 100 Landmark Square, Virginia Beach, Va. 23452
 739 Thimble Shoals Blvd., Suite 1006, Newport News, Va. 23606

SCALE: 1"=50' SHEET 2 OF 3 JULY 14, 1989



NOW OR FORMERLY
 CHRISTOPHER YORK ASSOCIATES, L.P.
 PHASE I, SECTION I



NOW OR FORMERLY
 CHRISTOPHER YORK ASSOCIATES, L.P.
 PARCEL 'C'

CURVE TABLE						
NO.	CH. BEARING	CHORD	DELTA	RADIUS	LENGTH	TAN
CO1	S 21° 22' 45" W	323.78'	28° 23' 45"	660.04'	327.12'	166.99'
CO2	S 68° 49' 48" W	59.96'	08° 40' 34"	396.35'	60.02'	30.07'
CO3	S 60° 39' 48" W	46.61'	08° 04' 22"	331.05'	46.64'	23.36'
CO4	S 74° 20' 12" E	32.78'	81° 55' 38"	25.00'	35.75'	21.70'
CO5	S 60° 50' 35" E	262.37'	54° 56' 24"	284.39'	272.70'	147.86'
CO6	S 76° 59' 37" E	164.88'	22° 38' 22"	420.00'	165.96'	84.07'
CO7	S 73° 45' 06" E	236.33'	29° 07' 23"	470.00'	238.90'	122.09'
CO8	S 60° 50' 35" E	216.24'	54° 56' 24"	234.39'	224.76'	121.86'
CO9	S 10° 09' 49" W	34.44'	87° 04' 25"	25.00'	37.99'	23.75'
CO10	S 55° 09' 49" W	48.74'	02° 55' 35"	954.40'	48.75'	24.38'
CO11	S 44° 46' 08" W	296.36'	17° 51' 49"	954.40'	297.56'	150.00'
CO12	S 01° 39' 19" E	32.50'	15° 14' 07"	122.60'	32.60'	16.39'
CO13	S 68° 56' 02" W	48.89'	08° 28' 06"	331.05'	48.93'	24.51'

20th July 1989
 William L. Jesse

I WILLIAM LEE JESSEE, A DULY REGISTERED SURVEYOR DO HEREBY CERTIFY THAT THIS DRAWING IS ACCURATE (WITHIN NORMAL TOLERANCES) AND COMPLIES WITH SECTION 55-79.58(a) OF THE CONDOMINIUM ACT AND THAT THE UNITS SHOWN HEREON ARE SUBSTANTIALLY COMPLETED IN ACCORDANCE HEREWITH.

William Lee Jesse, DATE 7-14-89

