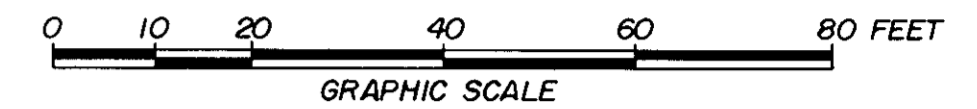
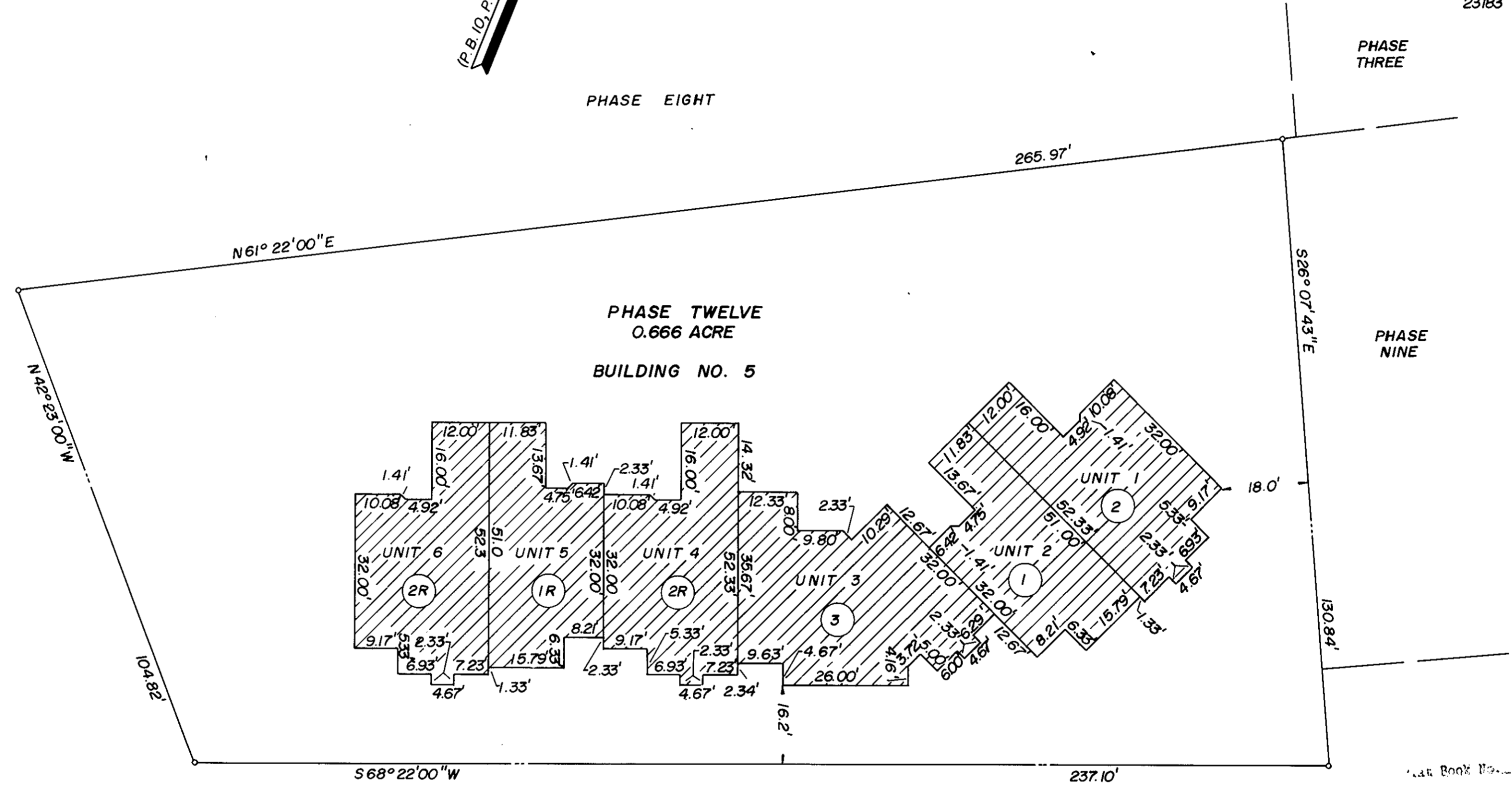
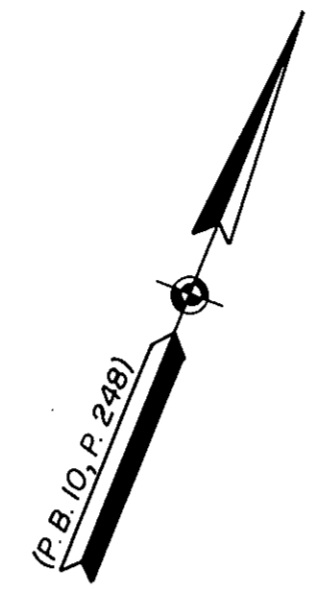


SHEET 2 OF 2
BURNT BRIDGE RUN CONDOMINIUM
PHASE TWELVE
GRAFTON DISTRICT COUNTY OF YORK, VIRGINIA
SCALE 1" = 20' FEBRUARY 9, 1989



THE SIRINE GROUP, LTD.
SURVEYORS • ENGINEERS • PLANNERS
P.O. BOX 450, ROUTE 17
WHITE MARSH, VIRGINIA
23183



- NOTES:
1. ALL BUILDING DIMENSIONS SHOWN HEREON ARE EXTERIOR DIMENSIONS AND ARE IN FEET.
 2. THE DESIGNATION OF FEE TITLE AREA IS SUPERSEDED BY THE DECLARATION AND IS NOT INTENDED TO IMPLY THAT EXTERIOR WALLS, BEARING WALLS AND OTHER COMMON ELEMENTS ARE FEE TITLE AREA.
 3. I CERTIFY THAT THIS PLAT COMPLIES WITH THE PROVISIONS OF SUBSECTION (a) OF §55-79.58 OF THE CONDOMINIUM ACT AND THAT ALL UNITS DEPICTED HEREON HAVE BEEN SUBSTANTIALLY COMPLETED.

SIGNED: C. E. Newbaker III
C. E. NEWBAKER III

- LEGEND
- FEE TITLE AREA
 - COMMON ELEMENTS
 - LIMITED COMMON ELEMENTS
 - LIMIT OF AREA OR ELEMENTS

Plat Book No. 117 Page 117
Filed in the Clerk's Office, Circuit Court, York Co., Va.
the 28th day of September, 1989
Teste: Nancy B. Keno, Clerk 12:13 PM
Karen M. Kelly Watkins D.C.