

YORKSHIRE DOWNS
CONDOMINIUM
PHASE IX
LOCATED IN
YORK COUNTY, VIRGINIA



SCALE: 1"=50' OCTOBER 6, 1989 SHEET 1 OF 3

THIS PLAT IS AN EXHIBIT TO THE DECLARATION OF YORKSHIRE DOWNS CONDOMINIUM, DATED MARCH 1, 1989 AND RECORDED IN DEED BOOK 11, PAGE 133

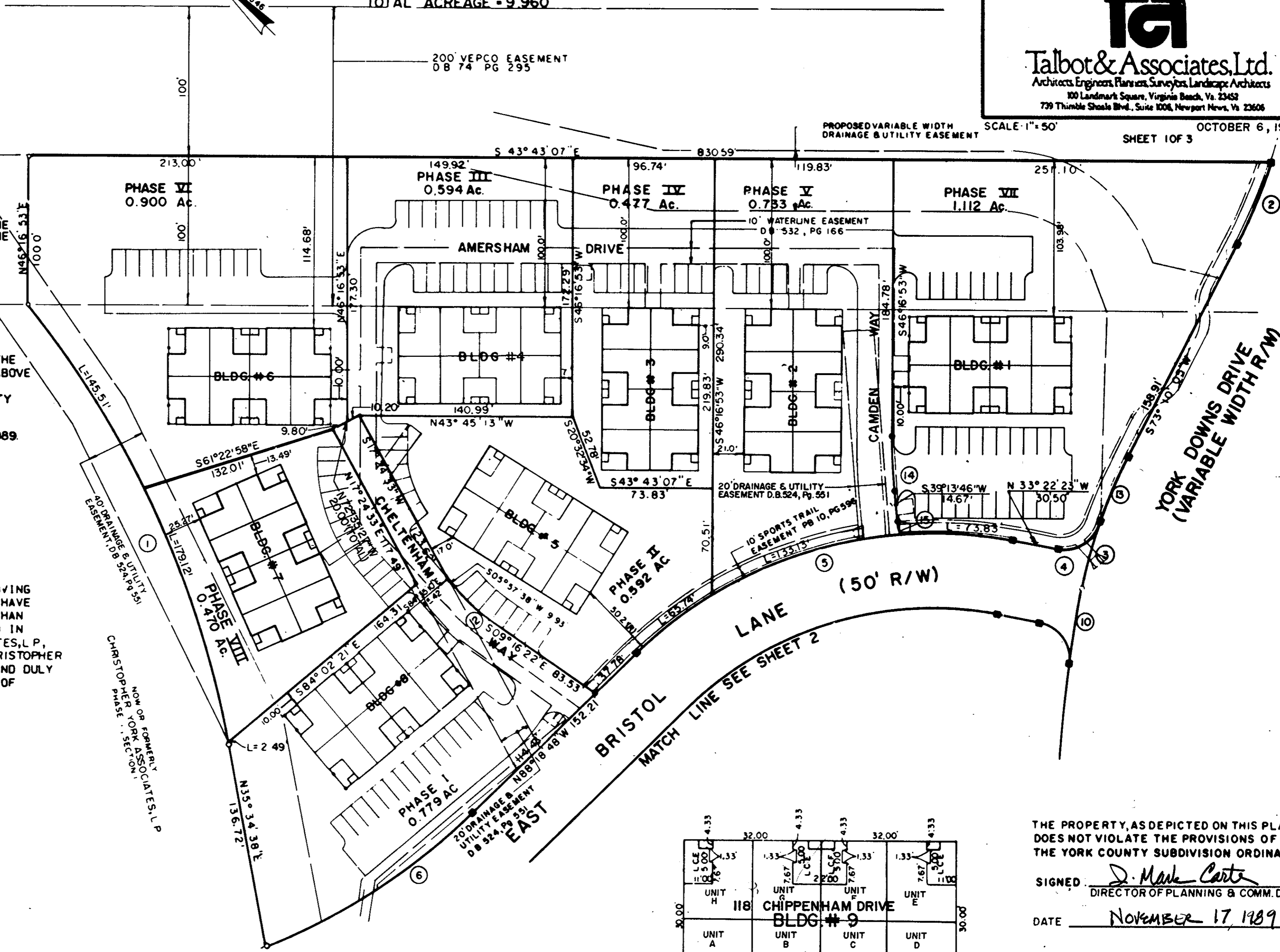
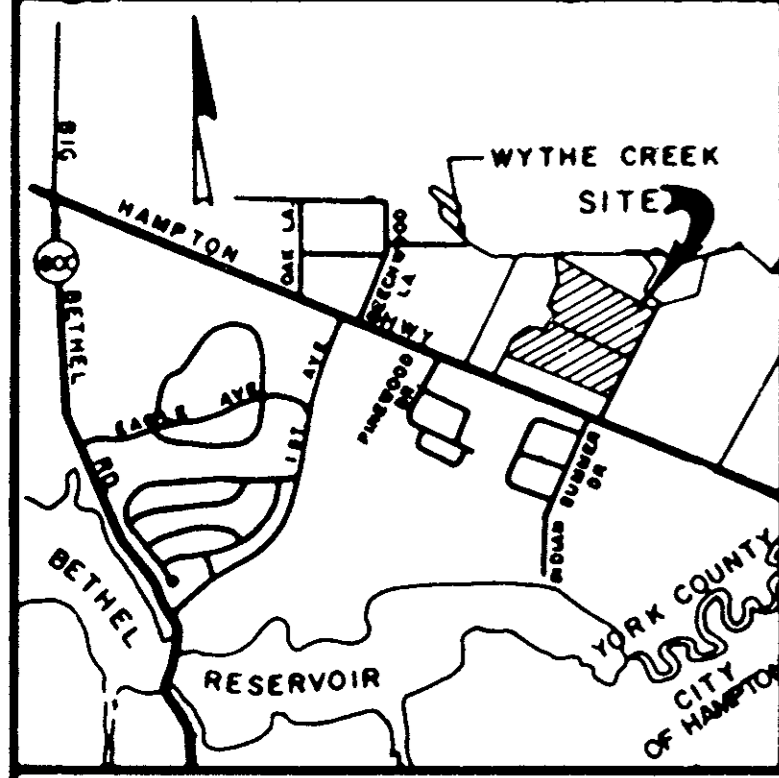
PLAT NANCY B. KANE, CLERK
Carol Drosselmuir, D.C.

NOW OR FORMERLY
CHRISTOPHER YORK ASSOCIATES, L.P
PHASE 2, SECTION 1

TOTAL ACREAGE - 9.960

200' VEPCO EASEMENT
DB 74 PG 295

PROPOSED VARIABLE WIDTH
DRAINAGE & UTILITY EASEMENT



THE PLATTING OF THE LAND HEREON SHOWN IS WITH THE FREE CONSENT AND IN ACCORDANCE WITH THE DESIRE OF THE UNDERSIGNED OWNER, LANDS END ASSOCIATES, A VIRGINIA LIMITED PARTNERSHIP BY P.H.P. ENTERPRISES INC., A VIRGINIA CORPORATION GENERAL PARTNER

BY: *[Signature]*
P.H.P. ENTERPRISES INC., GENERAL PARTNER

STATE OF VIRGINIA
CITY OF *Virginia Beach*
Sally Ann Crozin A NOTARY PUBLIC IN AND FOR THE CITY AND STATE AFORESAID DO HEREBY CERTIFY THAT THE ABOVE NAMED PERSON WHOSE NAME IS SIGNED TO THE FOREGOING WRITING HAS ACKNOWLEDGED THE SAME BEFORE ME IN MY CITY AND STATE AFORESAID.

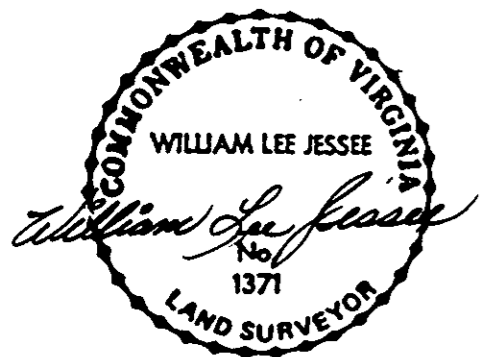
GIVEN UNDER MY HAND THIS *14th* DAY OF *November* 1989.

Sally Ann Crozin
NOTARY PUBLIC

MY COMMISSION EXPIRES: *6/2/93*

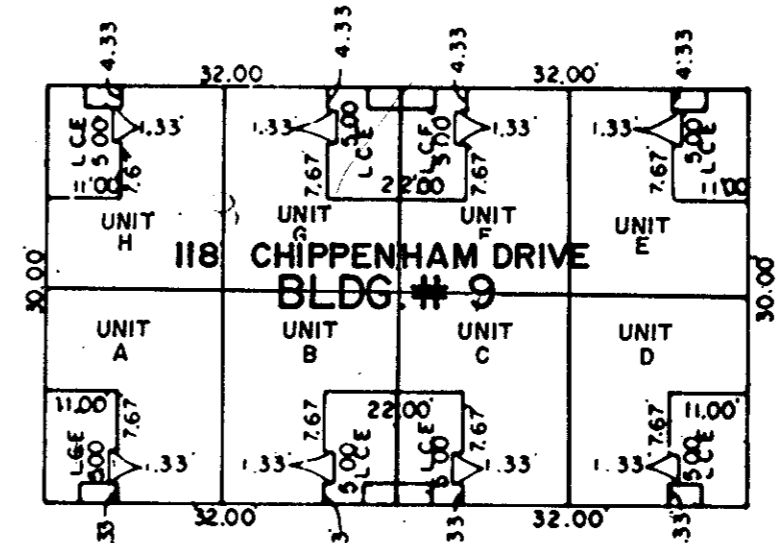
TO THE BEST OF MY KNOWLEDGE AND BELIEF, ALL THE REQUIREMENTS AS SET FORTH IN THE ORDINANCE FOR APPROVING PLATS OF SUBDIVISION IN THE COUNTY OF YORK, VIRGINIA HAVE BEEN COMPLIED WITH, INCLUDING A CLOSURE OF NOT LESS THAN 1'/10,000'. THIS IS TO CERTIFY THAT THE LAND EMBRACED IN THIS SUBDIVISION IS IN THE NAME OF LANDS END ASSOCIATES, L.P., A VIRGINIA LIMITED PARTNER AND WAS ACQUIRED FROM CHRISTOPHER YORK ASSOCIATES, L.P. BY DEED DATED DEC 9, 1987 AND DULY RECORDED IN THE CLERK'S OFFICE OF THE CIRCUIT COURT OF THE COUNTY OF YORK, VIRGINIA, IN DEED BOOK 506 PAGE 301

William Lee Jessee
WILLIAM LEE JESSEE, LAND SURVEYOR, NO. 1371



I, WILLIAM LEE JESSEE, A DULY REGISTERED SURVEYOR DO HEREBY CERTIFY THAT THIS DRAWING IS ACCURATE (WITHIN NORMAL TOLERANCES) AND COMPLIES WITH SECTION 55-79.58(a) OF THE CONDOMINIUM ACT AND THAT THE UNITS SHOWN HEREON ARE SUBSTANTIALLY COMPLETED IN ACCORDANCE HEREWITH.

William Lee Jessee, DATE *11-13-89*



CHIPPENHAM DRIVE
ALL UNITS DEPICTED HEREON ARE SAME UNIT TYPE AS SHOWN ON UNIT DIMENSION PLAN

THE PROPERTY, AS DEPICTED ON THIS PLAT DOES NOT VIOLATE THE PROVISIONS OF THE YORK COUNTY SUBDIVISION ORDINANCE.

SIGNED: *J. Mark Carter*
DIRECTOR OF PLANNING & COMM. DEV.

DATE: *NOVEMBER 17, 1989*

Filed in the Clerk's Office, Circuit Court, York Co., Va. the *20th* day of *November*, 1989
Teste: *Nancy B. Kane, Clerk*
Carol Drosselmuir
9/28/89 M.

L C E [] LIMITED COMMON ELEMENT