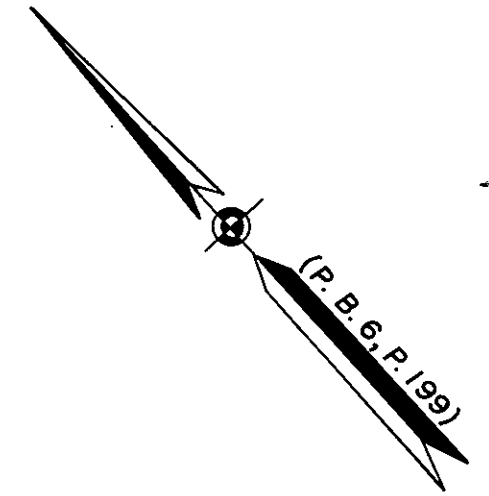
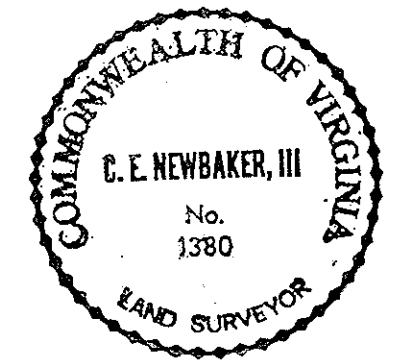


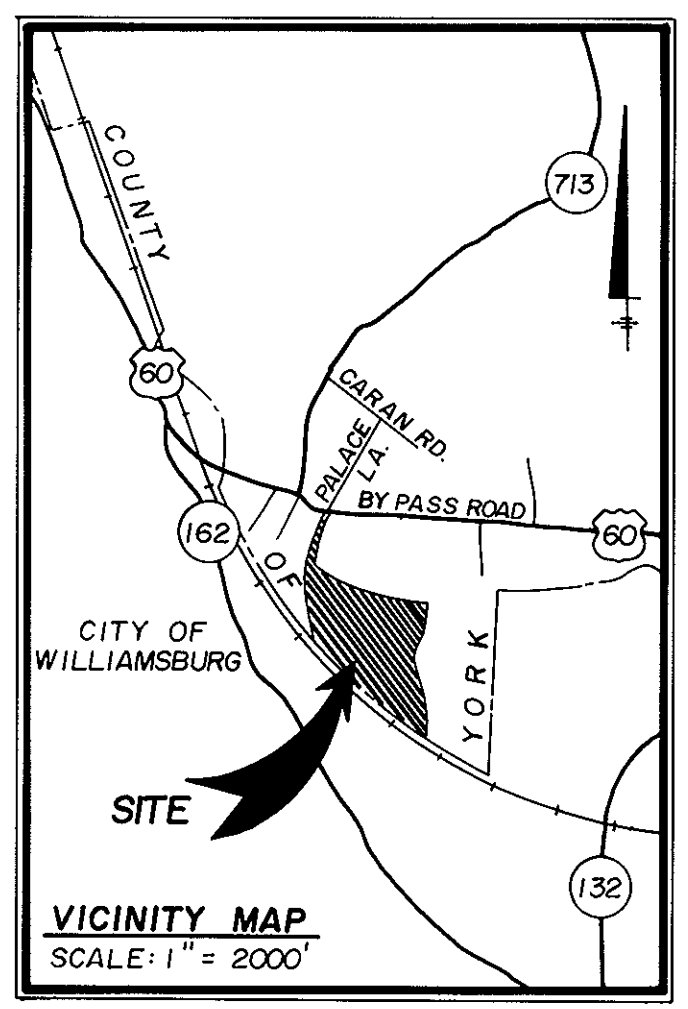
THE UNDERSIGNED CERTIFIES THAT THIS PLAN IS ACCURATE AND COMPLIES WITH THE PROVISIONS OF THE CODE OF VIRGINIA SECTION 55-79.58 (b) AND ALL UNITS DEPICTED HEREON HAVE BEEN SUBSTANTIALLY COMPLETED.

SIGNED: C. E. Newbaker III DATE: 10-2-89
 C. E. NEWBAKER III, L.S.

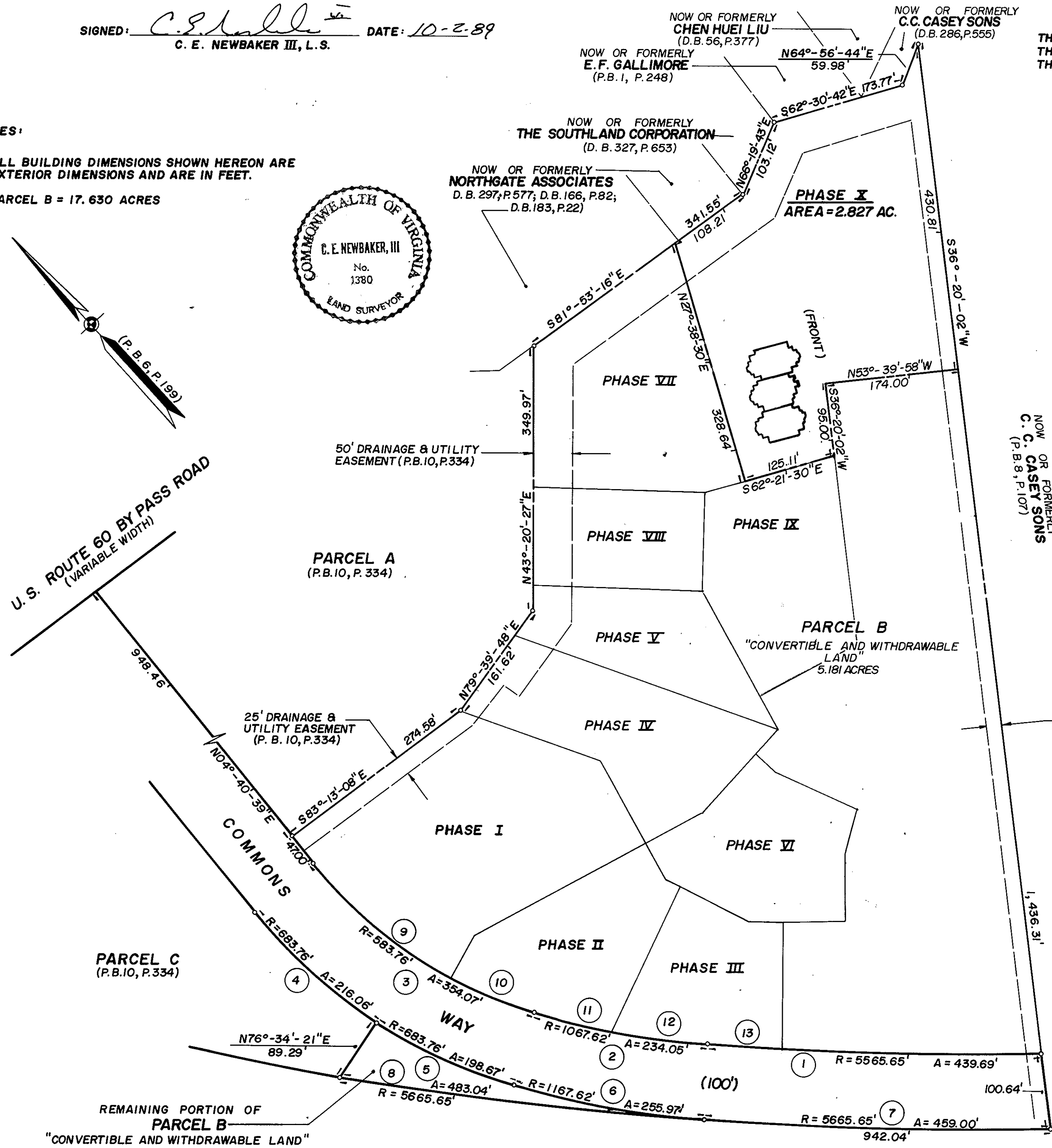
NOTES:
 I. ALL BUILDING DIMENSIONS SHOWN HEREON ARE EXTERIOR DIMENSIONS AND ARE IN FEET.
 PARCEL B = 17.630 ACRES



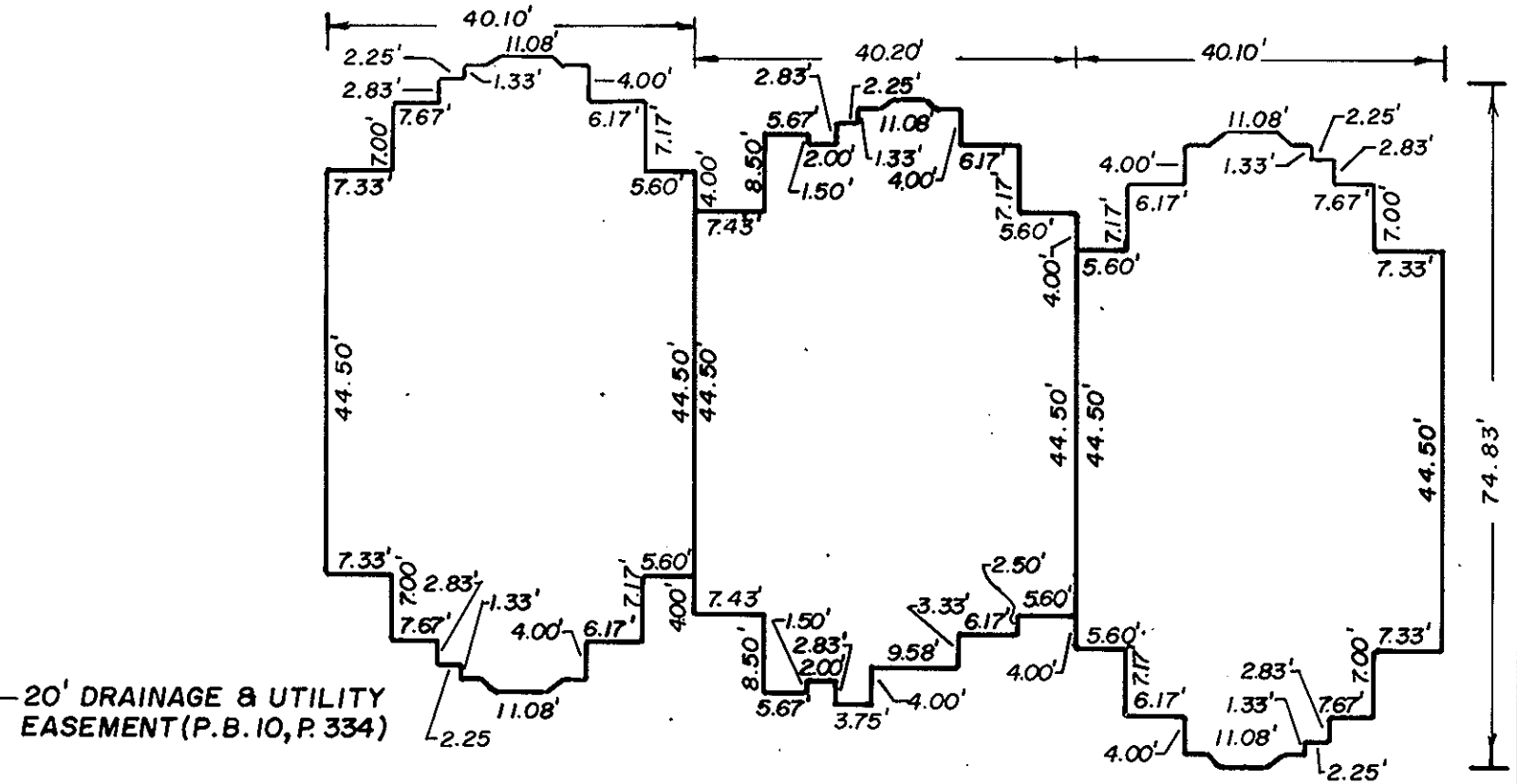
STATE OF VIRGINIA
 COUNTY OF YORK
 IN THE CLERK'S OFFICE OF THE CIRCUIT COURT FOR THE COUNTY OF YORK THE 15th DAY OF November, 1989 THIS MAP WAS PRESENTED AND ADMITTED TO RECORD AS THE LAW DIRECTS IN PLAT BOOK 11, PAGE 117.
 TESTE: NANCY B. KANE, CLERK
 CLERK
 BY Joseph S. Berryman



CURVE DATA TABLE			
NO.	RADIUS	DELTA	TANGENT
1	5565.65'	04°-31'-35"	219.96'
2	1067.62'	12°-33'-39"	117.50'
3	583.76'	34°-45'-06"	182.67'
4	683.76'	18°-06'-16"	108.94'
5	683.76'	16°-38'-48"	100.03'
6	1167.62'	12°-33'-39"	128.50'
7	5665.65'	04°-38'-30"	229.62'
8	5665.65'	04°-53'-06"	241.67'
9	583.76'	22°-51'-55"	118.05'
10	583.76'	11°-53'-11"	60.77'
11	1067.62'	05°-32'-25"	51.66'
12	1067.62'	07°-01'-14"	65.49'
13	5565.65'	00°-55'-36"	45.00'



NOW OR FORMERLY
 C. C. CASEY SONS
 (P.B. 8, P. 107)



D. Mark Carter
 NOVEMBER 2, 1989

PHASE X
 SHEET 1 OF 4
 PLAT OF
WILLIAMSBURG COMMONS CONDOMINIUMS

FOR
WILLIAMSBURG COMMONS, INC.
 A VIRGINIA CORPORATION
 BRUTON DISTRICT COUNTY OF YORK, VIRGINIA
 SCALE: 1" = 100' NOVEMBER 1, 1989



THE SIRINE GROUP, LTD.
 SURVEYORS • ENGINEERS • PLANNERS
 P.O. BOX 450, ROUTE 17
 WHITE MARSH, VIRGINIA
 23183

CHESAPEAKE AND OHIO RAILROAD