

THE UNDERSIGNED CERTIFIES THAT THIS PLAN IS ACCURATE AND COMPLIES WITH THE PROVISIONS OF THE CODE OF VIRGINIA SECTION 55-79.58 (b) AND ALL UNITS DEPICTED HEREON HAVE BEEN SUBSTANTIALLY COMPLETED.

NOTES:

1. ALL BUILDING DIMENSIONS SHOWN HEREON ARE EXTERIOR DIMENSIONS AND ARE IN FEET.

STATE OF VIRGINIA

COUNTY OF YORK

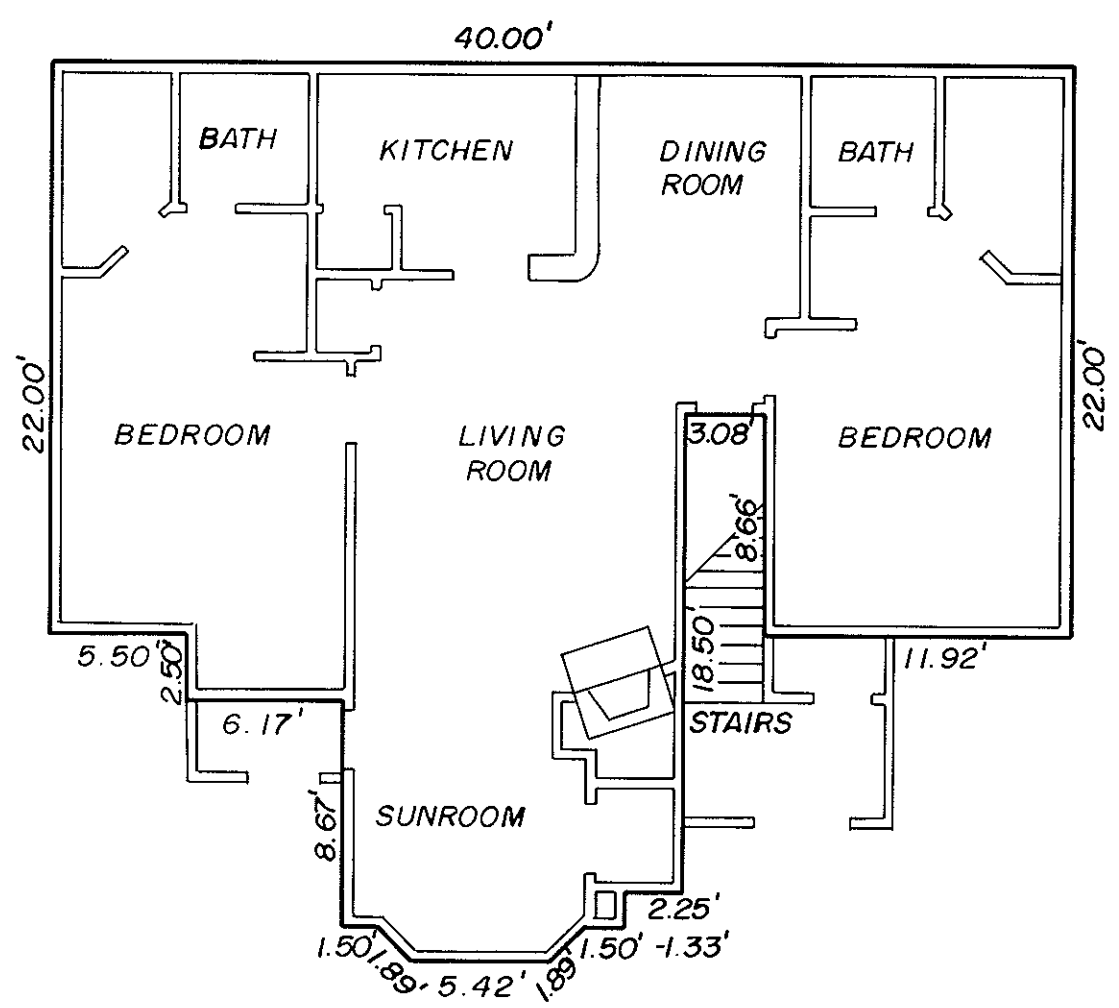
IN THE CLERK'S OFFICE OF THE CIRCUIT COURT FOR THE COUNTY OF YORK THE 15th DAY OF November, 1989 THIS MAP WAS PRESENTED AND ADMITTED TO RECORD AS THE LAW DIRECTS IN PLAT BOOK 11, PAGE 178.

SIGNED: *Kenton B. Patrick* DATE: 11/13/89
KENTON B. PATRICK, P. E.

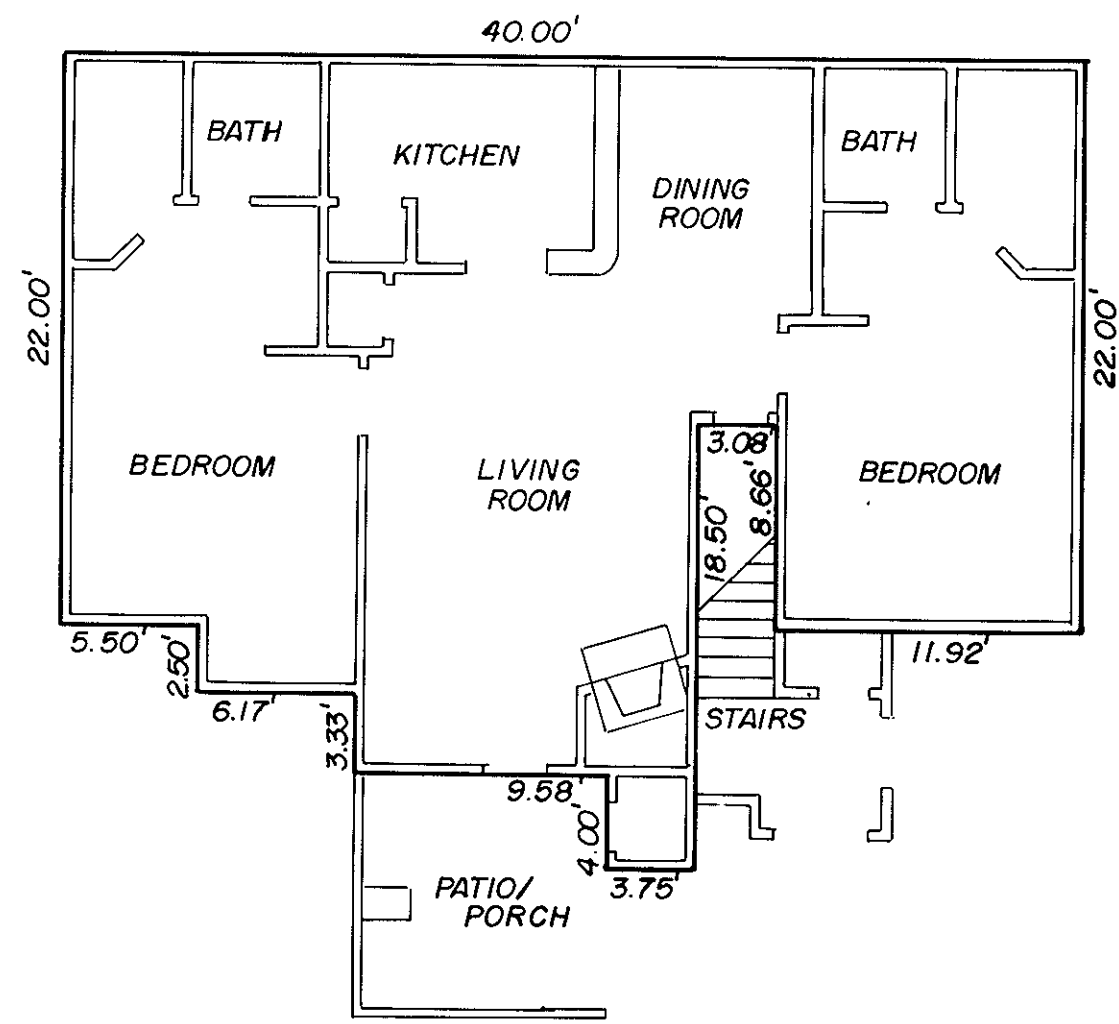


TESTE: *Nancy B. Kane*, CLERK
CLERK

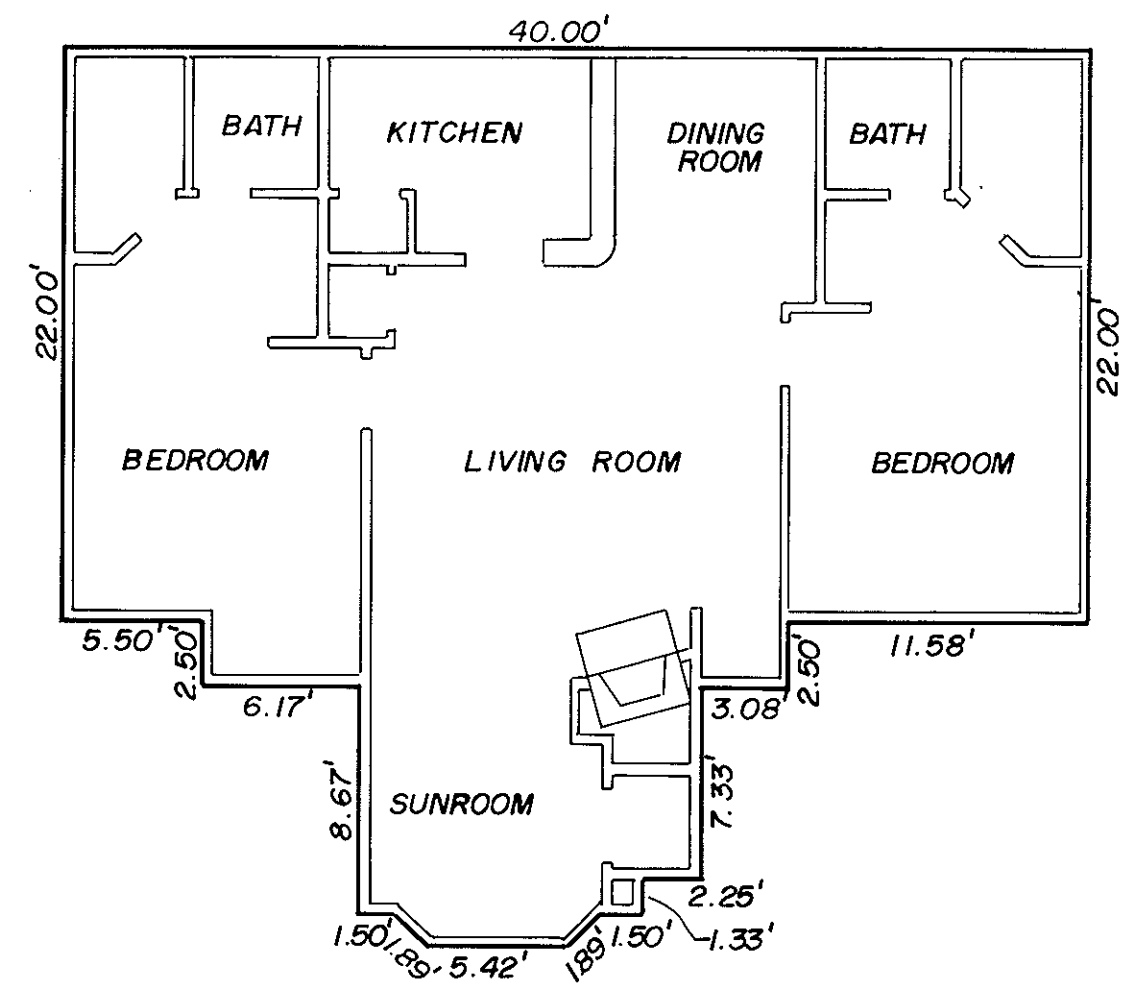
James S. DeSlynn



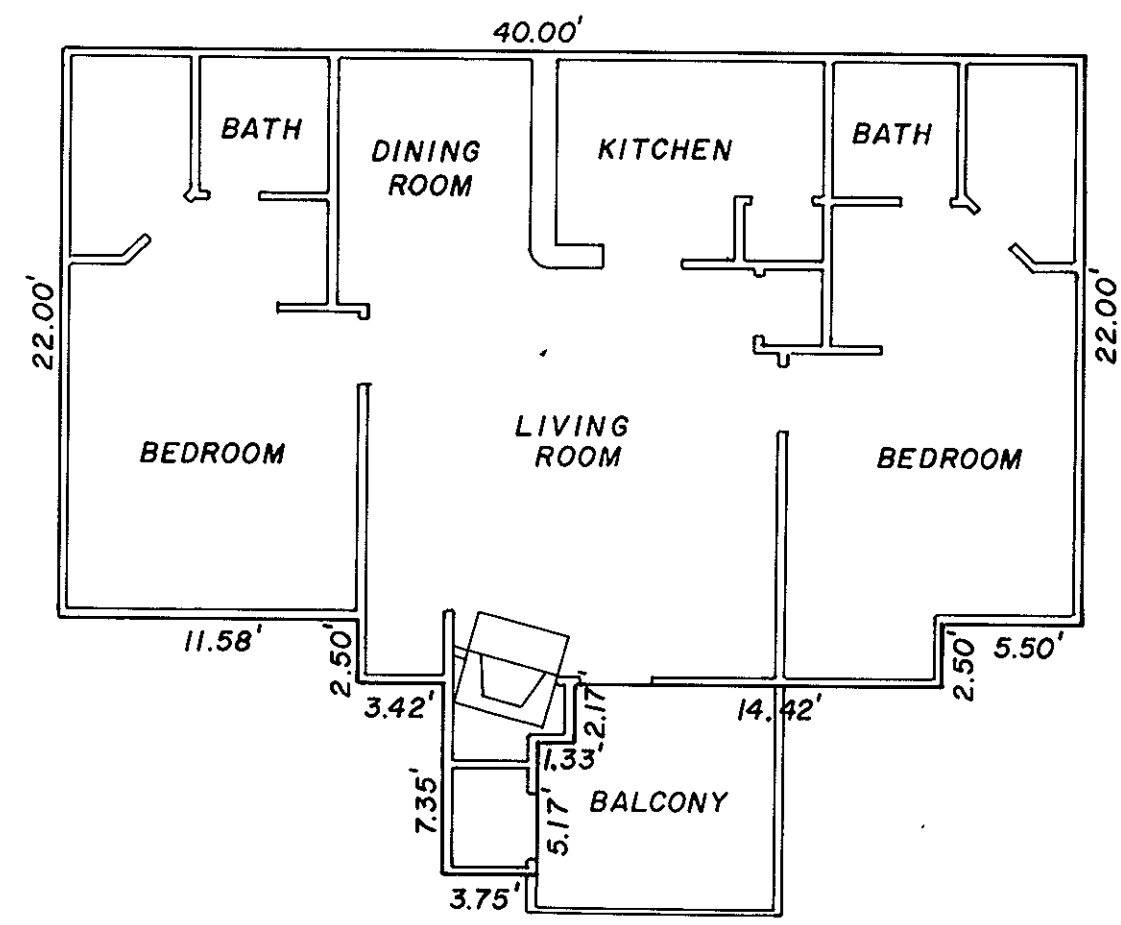
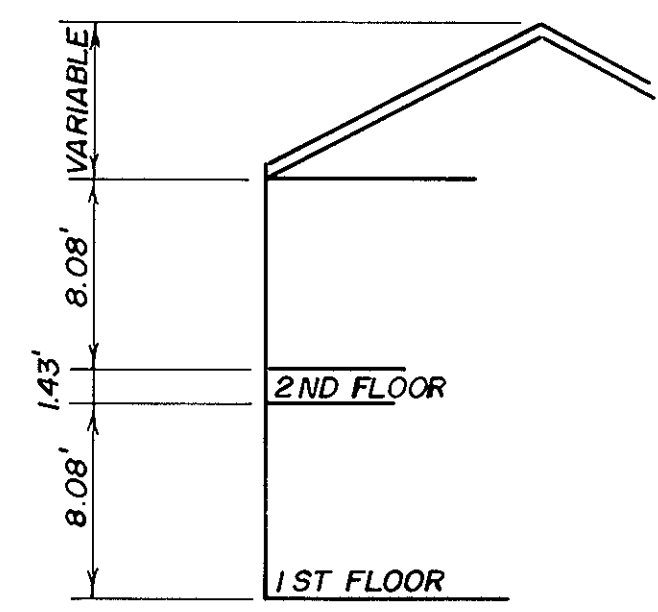
MODEL D - TYPICAL UNITS A, C, D, E & F
1ST FLOOR
W/ SUNROOM



MODEL D - TYPICAL UNIT B
1ST FLOOR
W/ PATIO



MODEL D - TYPICAL UNITS G, I, J, K & L
2ND FLOOR
W/ SUNROOM



MODEL D - TYPICAL UNIT H
2ND FLOOR
W/ DECK

PHASE X
SHEET 2 OF 4
PLAT OF
WILLIAMSBURG COMMONS CONDOMINIUMS
FOR
WILLIAMSBURG COMMONS, INC.,
A VIRGINIA CORPORATION
BRUTON DISTRICT COUNTY OF YORK, VIRGINIA
SCALE: 1/8" = 1'-0" NOVEMBER 1, 1989



THE SIRINE GROUP, LTD.
SURVEYORS • ENGINEERS • PLANNERS
P. O. BOX 450 ROUTE 17
WHITE MARSH, VIRGINIA
23183