

N/F
FRANK AND IDA SUE DREES
PB.9, PG. 404

PATRICK'S LANDING

SECTION 4

OWNER / DEVELOPER : CLYDE E. ASHWORTH AND BUSINESS GENERAL COMPANY, A VIRGINIA CORPORATION

YORK COUNTY

VIRGINIA

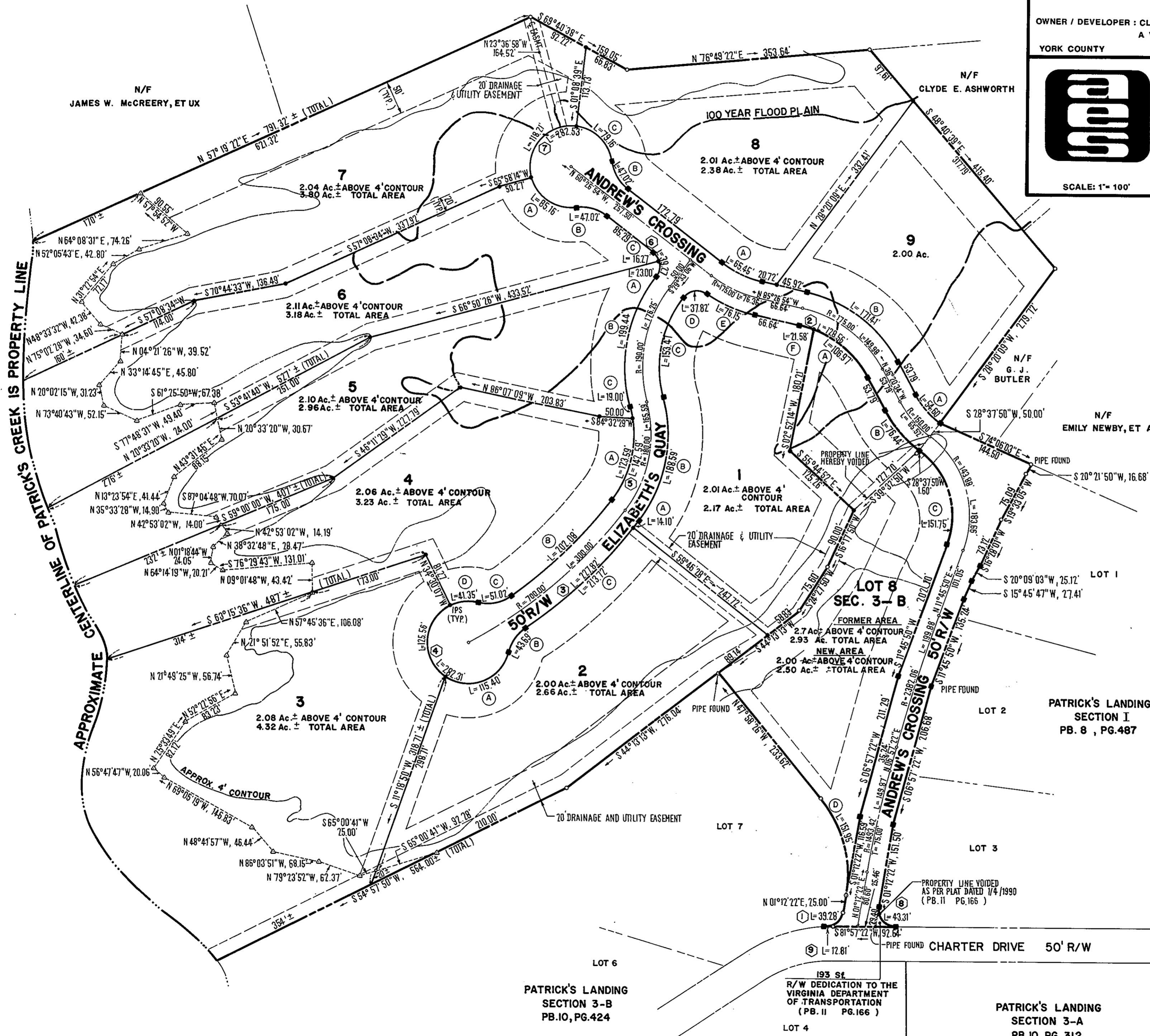


AES, a professional corporation
5248 Olde Towne Road, Suite 1
Williamsburg, Virginia 23185
(804) 253-0040
Engineering, Planning, Surveying

SCALE: 1" = 100'

DATE : 1/08/1990

J.N.#7079



APPROVED:
YORK COUNTY BOARD OF SUPERVISORS
BY: *J. Mark Carter*
PLAT APPROVING AGENT
DATE: MARCH 21, 1990
STATE OF VIRGINIA
COUNTY OF YORK
IN THE CLERK'S OFFICE OF THE CIRCUIT COURT FOR THE COUNTY OF YORK THE 2nd DAY OF March 1990. THIS MAP WAS PRESENTED AND ADMITTED TO RECORD AS THE LAW DIRECTS, PLAT BOOK 11, PAGE 185
TESTE: NANCY B. KANE, CLERK
BY: *[Signature]*

NOTE: CURVE #1 AND #9 ARE NOT RADIAL.

PATRICK'S LANDING SECTION 3-B
PB.10, PG.424

193 St.
R/W DEDICATION TO THE VIRGINIA DEPARTMENT OF TRANSPORTATION
(PB.11 PG.166)

PATRICK'S LANDING SECTION 3-A
PB.10, PG. 312

S. R. 671